

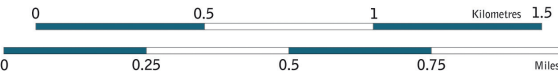
Glasgow  
**CITY PLAN 2**

**Development Policy Principles**

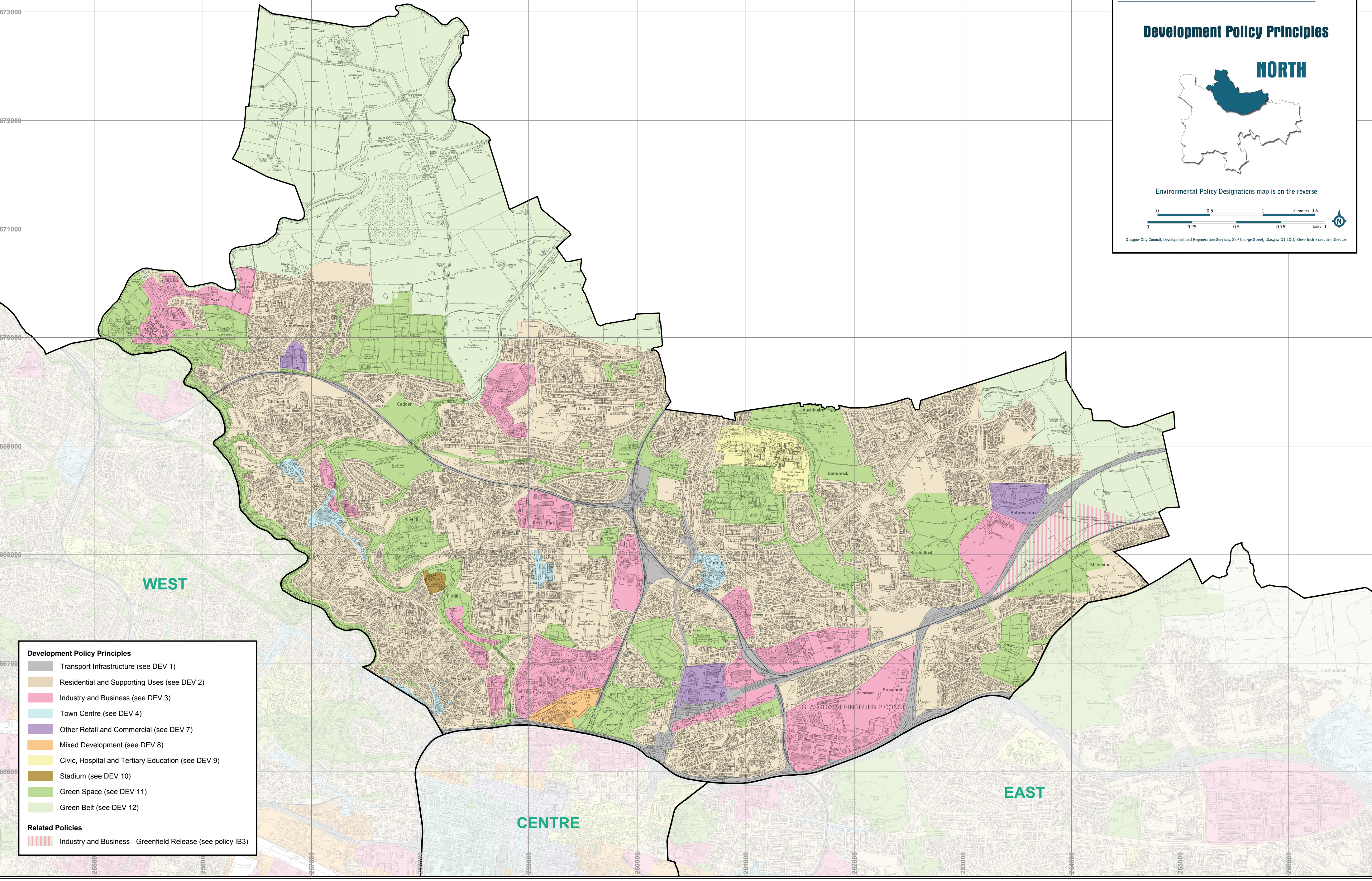
**NORTH**



Environmental Policy Designations map is on the reverse



Glasgow City Council, Development and Regeneration Services, 229 George Street, Glasgow G1 1QU, Steve Inch Executive Director



**Development Policy Principles**

- Transport Infrastructure (see DEV 1)
- Residential and Supporting Uses (see DEV 2)
- Industry and Business (see DEV 3)
- Town Centre (see DEV 4)
- Other Retail and Commercial (see DEV 7)
- Mixed Development (see DEV 8)
- Civic, Hospital and Tertiary Education (see DEV 9)
- Stadium (see DEV 10)
- Green Space (see DEV 11)
- Green Belt (see DEV 12)

**Related Policies**

- Industry and Business - Greenfield Release (see policy IB3)