

Glasgow Local Biodiversity Action Plan

Habitat Statement

WETLAND



Common Frog



Azure damselfly



Water Vole

Existing Habitat Plans

Raised Bog, Marsh, Reedbeds, Swamp, Fen, Wet Woodland, Standing Open Water, Rivers and Streams

Existing Species Plans

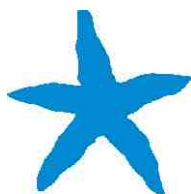
Water Vole, Otter, Jack Snipe, Reed Bunting, Palmate Newt, Tufted Loosetrife, Common Frog, Common Toad, Atlantic Salmon, Dragonflies and Damselflies, Bog-rosemary, Bog-mosses



If you are interested in finding out more about Biodiversity or helping out in the implementation of the actions, please contact the Biodiversity Officers at

Glasgow City Council, Land and Environmental Services, Conservation Team, 37 High Street, Glasgow G1 1LX
Tel: 0141 287 5665/7026 E-mail: carol.maclean@glasgow.gov.uk, keith.watson@glasgow.gov.uk or
catherine.scott@glasgow.gov.uk

More information and individual action plans can be downloaded from www.glasgow.gov.uk/biodiversity



New Actions 2008 – 2010	Delivery Organisation
Implement a pond naturalisation project at Auchinlea Park during 2008-09 with grant support from SNH.	Glasgow City Council
Encourage the creation and diversification of new ponds/wetlands at three GCC sites as part of SUDS schemes, during 2008-2010.	Glasgow City Council
Create one pond and/or wetland as part of a greenspace enhancement project.	Carts Greenspace
Carry out wetland management and improvement works at 5 wetland sites, including Robroyston Park Local Nature Reserve (LNR) and Dawsholm Park LNR.	Glasgow City Council
Carry out an ecological survey and produce a management plan for Commonhead Moss proposed LNR, during 2008-09.	Glasgow City Council
Continue to survey and monitor Water Voles, a nationally declining species, throughout the City, visiting at least 5 sites per year.	Glasgow City Council
Encourage others to undertake Water Vole surveys through the provision of training.	Glasgow City Council
Complete/commission a Water Vole survey of Auldhouse Burn catchment, in partnership with East Renfrewshire Council.	Carts Greenspace
Continue to monitor breeding amphibians at known sites across the City, on an annual basis.	Glasgow City Council
Carry out reptile surveys at two sites.	Glasgow City Council
Survey key sites for dragonflies and damselflies, on an annual basis.	Glasgow City Council
Survey Forth and Clyde Canal and River Kelvin for the presence of Otter, on an annual basis.	Glasgow City Council
Complete the survey of Bog-rosemary populations at Commonhead Moss and supplement populations through propagation by 2010.	Glasgow City Council
Monitor water quality of culvert entering Possil Marsh.	SEPA
<p>Support a wetland, landscape-scale habitat protection and enhancement project within the Gartloch-Gartcosh corridor.</p> <ul style="list-style-type: none"> - Carry out a minimum of two walkover/site visits with partners to discuss consultants' reports - Hold a minimum of one awareness raising event by 2008-09 - Develop interpretation for the area by 2009-10 	RSPB
Maintaining wetland scrapes and ponds from Castlemilk Park project to prevent silting up.	Castlemilk Environment Trust
Provide funding and guidance for habitat enhancement projects.	SEPA
Provide guidance on fisheries management.	SEPA
Apply legislation to prevent deterioration of biodiversity habitats and species.	SEPA
Ensure planning application responses consider the presence of biodiversity habitats and species.	SEPA
Monitor pollution and general condition (invertebrates, plants, fish) in rivers and streams with the aim of achieving good status by 2014 for Water Framework Directive.	SEPA
Ensure SUDS ponds are installed at all new developments.	SEPA

Glasgow Local Biodiversity Action Plan

Habitat Statement **WOODLAND**

Existing Habitat Plans

Broad-leaved and Mixed Woodland, Wet Woodland

Existing Species Plans

Badger, Bluebell, Wood Crane's-bill, Toothwort



If you are interested in finding out more about Biodiversity or helping out in the implementation of the actions, please contact the Biodiversity Officers at

Glasgow City Council, Land and Environmental Services, Conservation Team, 37 High Street, Glasgow G1 1LX
Tel: 0141 287 5665/7026 E-mail: carol.maclean@glasgow.gov.uk, keith.watson@glasgow.gov.uk or
catherine.scott@glasgow.gov.uk

More information and individual action plans can be downloaded from www.glasgow.gov.uk/biodiversity



New Actions 2008 – 2010	Delivery Organisation
Work with partners, such as Forestry Commission Scotland, to manage and improve the City's woodland resource at 5 woodland locations in the City.	Glasgow City Council
Native woodland creation at Glenacre and Downcraig.	Castlemilk Environment Trust
Working with partners, plant 0.25ha or 2500 native trees to establish new native woodlands.	Carts Greenspace
Establish a total of 5 hectares of priority woodland habitat by 2010 (Glasgow Woodland Unit).	Forestry Commission Scotland
Working with partners, bring 2ha of existing mature woodland into wildlife friendly sustainable management.	Carts Greenspace
Produce an annual City Woodland progress report, by November each year.	Glasgow City Council
Review woodland management policies to maximise the biodiversity potential at GCC sites, by 2009.	Glasgow City Council
Continue to provide annual investment from the Parks Development budget on strategic planting - £35000 in 2008-09.	Glasgow City Council
Provide education training courses: annual programme of 5 'Forests for Learning' and one 'Forest Schools' training.	Forestry Commission Scotland
Develop trial projects with volunteers to collect seed for growing woodland species at Daldowie Nursery.	Glasgow City Council
Seek to diversify existing community woodland plantations through partnership work, with local community groups and voluntary agencies such as British Trust for Conservation Volunteers (BTCV).	Glasgow City Council
Carry out an ecological survey of one key woodland site, per annum.	Glasgow City Council
Work with BTCV to introduce locally grown ground flora plants at community plantation woodlands.	Glasgow City Council
Carry out survey of rare plants at woodland sites (Wood Crane's-bill) by 2009.	Glasgow City Council
Monitor survival of known Toothwort populations as identified in previous LBAP surveys, on an annual basis.	Glasgow City Council
Administer and process forestry related applications under the Scottish Rural Development Programme.	Forestry Commission Scotland
Investigate reports of tree felling with regard to the Forestry Act 1967 (amended).	Forestry Commission Scotland
Management of woodlands throughout Castlemilk, including thinning and path maintenance.	Castlemilk Environment Trust
Respond to and monitor planning applications.	Castlemilk Environment Trust

Glasgow Local Biodiversity Action Plan

Habitat Statement **GRASSLAND**

Existing Habitat Plans

Acid Grassland, Neutral Grassland, Dwarf Shrub Heath

Existing Species Plans

Skylark, Small Pearl-bordered Fritillary, Common Frog, Common Toad, Burnet-saxifrage, Sheep's-bit



If you are interested in finding out more about Biodiversity or helping out in the implementation of the actions, please contact the Biodiversity Officers at

Glasgow City Council, Land and Environmental Services, Conservation Team, 37 High Street, Glasgow G1 1LX
Tel: 0141 287 5665/7026 E-mail: carol.maclean@glasgow.gov.uk, keith.watson@glasgow.gov.uk or
catherine.scott@glasgow.gov.uk

More information and individual action plans can be downloaded from www.glasgow.gov.uk/biodiversity



New Actions 2008 - 2010	Delivery Organisation
Carry out major demonstration meadow creation and management projects at two Glasgow open spaces (Hogganfield Park LNR and Trinley Brae) during 2008-09 and monitor results.	Glasgow City Council
New grassland habitat demonstration plot negotiated and implemented in a prominent area of current shaved sward.	Carts Greenspace
Use cattle grazing as a management tool at 3 GCC owned sites, including Dawsholm Park LNR and Carnbooth.	Glasgow City Council
Working in partnership with British Land create areas of perennial wildflower meadows at the Glasgow Fort.	Kelvin Clyde Greenspace
Create or extend at least 5 species rich meadows at GCC owned land and link to community events, such as those held every year at Local Nature Reserves.	Glasgow City Council
Continue to implement and monitor trial grassland management and improvement works at 40 key grassland sites, on an annual basis.	Glasgow City Council
Bring grassland habitat at Glasgow Museums Resource Centre and Pinmore Street motocross site into an appropriate conservation management regime.	Carts Greenspace
Working in partnership with Yoker Housing Association, Dumbarton Road Corridor Environment Trust and Culture and Sport Glasgow on Yoker Cycleway project - proposed grassland/biodiversity enhancement.	Kelvin Clyde Greenspace
Create woodland rides and glades, plant wildflower plugs and seed scarified areas at Glenacre and Downcraig.	Castlemilk Environment Trust
Plant wildflower plugs and seed scarified areas outwith lairs, at New Carmunnock Cemetery.	Castlemilk Environment Trust
Implement trial fairway and rough grassland management projects at 5 GCC owned golf courses by 2010.	Glasgow City Council
Create and/or enrich 2 hectares of species rich grassland at GCC owned farmland sites by 2010.	Glasgow City Council
Implement heathland restoration work at 5 local sites by 2010.	Glasgow City Council
Carry out at least one ecological survey of key grassland sites per year.	Glasgow City Council
Carry out survey of rare plants at key grassland sites (Burnet-saxifrage, Sheep's-bit).	Glasgow City Council
Hold a grasshopper identification workshop, during 2008, to encourage greater invertebrate surveying.	Glasgow City Council

Glasgow Local Biodiversity Action Plan

Habitat Statement

FARMLAND

Existing Habitat Plans

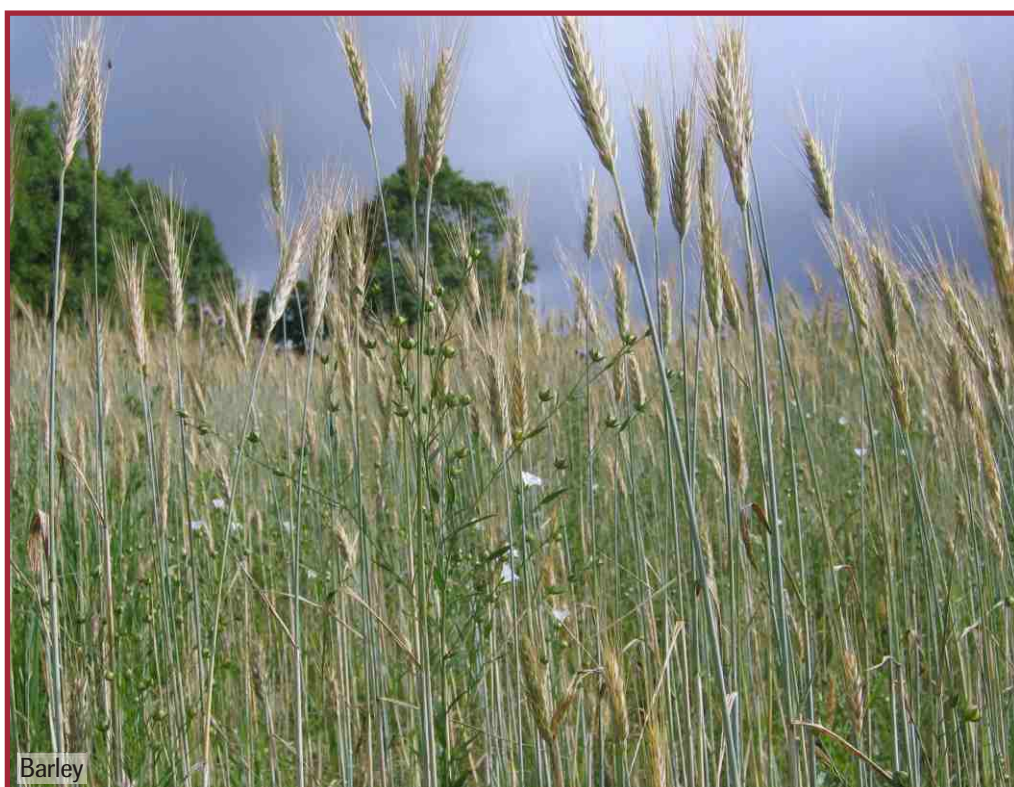
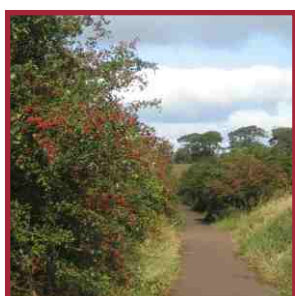
Boundary Features, Acid Grassland, Neutral Grassland

Existing Species Plans

Tree Sparrow, Reed Bunting, Skylark, Burnet-saxifrage, Purple Ramping-fumitory



Reed Bunting



Barley

If you are interested in finding out more about Biodiversity or helping out in the implementation of the actions, please contact the Biodiversity Officers at

Glasgow City Council, Land and Environmental Services, Conservation Team, 37 High Street, Glasgow G1 1LX
Tel: 0141 287 5665/7026 E-mail: carol.maclean@glasgow.gov.uk, keith.watson@glasgow.gov.uk or
catherine.scott@glasgow.gov.uk

More information and individual action plans can be downloaded from www.glasgow.gov.uk/biodiversity



New Actions 2008 - 2010	Delivery Organisation
Review existing agri-environment schemes at GCC owned farms and encourage new or further application at farms across the City.	Glasgow City Council
Continue to use highland cows as a grassland management tool at Carnbooth.	Glasgow City Council
Continue to support the Farmland Birds Project on Glasgow farms which helps monitor bird populations and implements habitat improvement works.	Glasgow City Council
Develop a joint funding bid to create wildlife-rich routes between Cathkin Braes Country Park, National Trust for Scotland's property at Kittochside and Scottish Wildlife Trust's Cathkin Marsh - partners would be GCC, NTS, SWT and SNH.	RSPB
Plant at least 300m of new hedgerows, with grant support from SNH, to include Bishop Loch LNR, Garscadden Wood LNR and Dawsholm Park LNR, by the end of 2009.	Glasgow City Council
Diversify up to 1000m of hedgerow in the Windlaw/Carnbooth area, by 2010.	Glasgow City Council
Proposed creation of new pond and refurbishment of existing pond at Summerston Farm.	Kelvin Clyde Greenspace
Provide guidance to farmers about watercourse management.	SEPA
Examine possibility of resurrecting RSS work which had been looked into on farms in the Kelvin Valley floodplain into LMC or possibly through CAR. The work would potentially involve ponds, wetlands and tree planting and would involve collaboration between farmers.	FWAG

Glasgow Local Biodiversity Action Plan

Habitat Statement

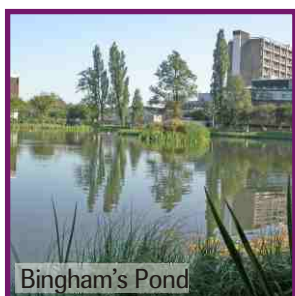
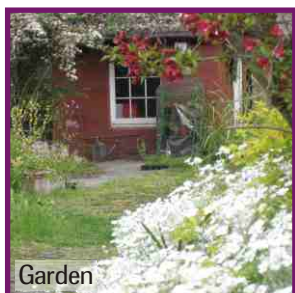
BUILT UP AREAS & GARDENS AND AWARENESS STRATEGY

Existing Habitat Plans

Built Up Areas and Gardens Statement, Boundary Features, Standing Open Water, Rivers and Streams

Existing Species Plans

Water Vole, Swift, Purple Ramping-fumitory



If you are interested in finding out more about Biodiversity or helping out in the implementation of the actions, please contact the Biodiversity Officers at

Glasgow City Council, Land and Environmental Services, Conservation Team, 37 High Street, Glasgow G1 1LX
Tel: 0141 287 5665/7026 E-mail: carol.maclean@glasgow.gov.uk, keith.watson@glasgow.gov.uk or
catherine.scott@glasgow.gov.uk

More information and individual action plans can be downloaded from www.glasgow.gov.uk/biodiversity



New Actions 2008 – 2010	Delivery Organisation
Restore and develop the provision of local provenance plants at Daldowie Nursery for use in citywide projects, during 2008-09.	Glasgow City Council
Advise gardeners on eco-friendly gardening, composting and design maintenance.	Castlemilk Environment Trust
Guidance on bat protection produced.	SEPA
Develop a guidance pack for improvement of school grounds, by 2010.	Glasgow City Council
Provide advice to schools, allotments and “pleasure” gardens on biodiversity, sustainability, environmental education etc.	Kelvin Clyde Greenspace
Create three biodiversity areas within school grounds.	Carts Greenspace
Biodiversity enhancements as part of school grounds improvements to a minimum of six schools.	Kelvin Clyde Greenspace
Native hedge planting as part of school grounds improvements at Glendale Primary.	Kelvin Clyde Greenspace
Create demonstration pond in “institutional” grounds.	Carts Greenspace
Investigate opportunities to create biodiversity areas in partnership with churches participating in the Eco-congregation initiative.	Carts Greenspace
Work ongoing for creation of SUDS ponds at Toryglen, Polmadie, Bishop Loch and Glasgow Business Park.	SEPA
Proposed SUDS at Queenslie Industrial Estate and at Mansion House Woodlands.	Kelvin Clyde Greenspace
Diversion of burn at Boghall Road, part culvert, part open channel and two ponds.	SEPA
Biodiversity enhancements proposed for projects at Royston Road as part of Derelict and Vacant Land project.	Kelvin Clyde Greenspace
Biodiversity enhancements proposed for Riddrie Allotments.	Kelvin Clyde Greenspace
Redevelopment of six backcourts with Copperworks Housing Co-operative to include biodiversity enhancements.	Kelvin Clyde Greenspace
Provide opportunity for volunteers to assist in biodiversity work.	Glasgow City Council
Organise the annual Big Garden Birdwatch.	RSPB
Produce and circulate travelling exhibition concentrating on the theme of biodiversity.	Carts Greenspace
Organise a BBC Springwatch event at Hogganfield Park LNR in 2008.	Kelvin Clyde Greenspace
Organise an International Biodiversity Day schools’ event as part of Biodiversity Week in 2008.	Glasgow City Council
Organise three Local Nature Reserve events each year.	Glasgow City Council
Deliver an annual programme of Countryside Ranger run events.	Glasgow City Council
Undertake educational work, through the Countryside Ranger Service with classes/school groups in line with 5-14 curriculum, 150 by March 2009.	Glasgow City Council
Infiltrate biodiversity into the Kingfisher Schools Programme and Greenspace for the Future talks.	Carts Greenspace
Deliver interpretation at Garscadden Wood LNR, Dawsholm Park LNR and Robroyston Park LNR by 2009.	Glasgow City Council
Erect wildlife management signage at open spaces, where appropriate.	Glasgow City Council
Prepare with the support of partners, a Biodiversity Newsletter twice a year.	Glasgow City Council
Prepare with the support of partners, the annual Glasgow Local Biodiversity Action Plan (LBAP) Monitoring and Progress Report, by November each year.	Glasgow City Council

New Actions 2008 – 2010 cont.	Delivery Organisation
Produce two additional Local Nature Reserve leaflets (Dawsholm Park and Garscadden Woods) during 2008-09.	Glasgow City Council
Produce a new leaflet on Cathkin Braes during 2008-09.	Glasgow City Council
Produce special biodiversity issue of Carts Greenspace newsletter.	Carts Greenspace
Produce leaflets for two under appreciated sites.	Carts Greenspace
Include biodiversity information in Map Pack publication.	Castlemilk Environment Trust
Update the biodiversity pages of the Council's website, on a monthly basis.	Glasgow City Council
Launch the new Kelvin Clyde Greenspace website.	Kelvin Clyde Greenspace
Advertise the importance of biodiversity on SEPA's website.	SEPA
Continue field teaching, guided walks and talks informing people about the birds of Kelvingrove and Glasgow through the Aren't Birds Brilliant based at Kelvingrove Museum.	RSPB
Potentially establish an Aren't Birds Brilliant site at Pollok Country Park in 2008.	RSPB