

Glasgow and Edinburgh
Great places to live, work and play



: Contents

Contents	1
Glasgow and Edinburgh Public Sector Relocation	2
The Cities	4
Transport/Connectivity	6
People	8
Property	10
Glasgow and Edinburgh A Great Choice	12
Outstanding Quality of Life	16
Our Service	18
Contacts	18
Links of Interest	22

Glasgow and Edinburgh Public Sector Relocation





• Welcome

Glasgow and Edinburgh are Scotland's two largest cities. Only 50 minutes apart by train and located in Scotland's Central Belt, the combined population of the region is 3.2 million.

The cities are fundamental to Scotland's "knowledge-driven" economy, offering a highly educated workforce with several of the UK's top universities and research institutes located in the region.

With the countryside and the coast within easy reach, both cities offer a high quality of life.

Glasgow and Edinburgh have an established commitment to collaboration, aimed at enabling the two cities to compete more effectively on the world stage.

If relocation for your organisation is a consideration, this brochure will give you a flavour of what Scotland's two largest cities have to offer.

The Cities



Glasgow and Edinburgh are only 46 miles (75 kilometres) apart, connected by frequent rail and coach services and the M8 motorway. Each city has an international airport.

Located to the west of Scotland on the River Clyde, **Glasgow** is Scotland's largest city, at the heart of one of the UK's principal metropolitan areas with a population of 1.2 million. The city's large population catchment provides an easy commute for a further 500,000. Glasgow is a major centre for public administration, financial services, and tourism-related sectors. Glasgow is rated as the best UK shopping centre outside the West End of London.¹

Edinburgh and its surrounding region has a population of 1.3 million. The city region is located to the east of Scotland - linked northwards to Fife by the world-famous Forth Bridges and stretching south to the Scottish Borders. As Scotland's capital, Edinburgh is home to the Scottish Parliament and many functions of the Scottish Government. It is ranked as the largest financial centre in the UK after London; Royal Bank of Scotland, HBOS and Standard Life all have headquarters in the city. As well as its proven financial strengths, Edinburgh is Scotland's primary tourist destination and leading city of science.

Glasgow and Edinburgh offer a proven, efficient and cost-effective option for central government and related activities. Our promise is simple:

- You can get here easily.
- You will find the skilled and highly educated workforce you need.
- There's office space to suit every organisation.
- We will aim to ensure that your relocation is trouble-free.

Glasgow
• Fourth largest city in the UK
• Largest retail centre outside London - <i>Experian Retail Ranking 2007</i>
• Largest public transport network outside London
• Voted third best business centre in Europe - <i>Fortune Magazine</i>
• Best tourist location in the UK - <i>Condé Nast 2006</i>

Edinburgh
• Scotland's capital city and seventh largest city in the UK
• UK's second largest and Europe's sixth largest financial centre
• Most productive workforce in Scotland in terms of GVA per head
• Awarded accolade of Best Place in the UK to Live - <i>Location, Location, Location 2007</i>
• Best quality of life in the UK and least polluted - <i>Cushman and Wakefield company survey 2007</i>

¹Source: Experian Retail Ranking 2007

Transport/Connectivity





Glasgow and Edinburgh's excellent road, rail and air links enable fast and easy access to major cities in UK and abroad. There are three international airports in the region (Glasgow, Edinburgh and Prestwick, located in Ayrshire and 40 minutes by train from Glasgow).

Both cities are well connected, offering:

- Excellent transport links, with short travel-to-work times.
- Outstanding bus services complemented by other local public transport options including suburban rail and the only subway system outside London (Glasgow) and a planned trams network (Edinburgh).
- A comprehensive motorway system that is being upgraded and extended.
- Three international airports, serving more than 180 UK and international destinations. Direct connections to Europe, US and the rest of the world.
- One hour flight times to London - and over 120 flights a day.²
- Planned airport-city centre links to reduce travel times even further.
- Planned significant improvements to the Edinburgh-Glasgow rail link including: electrification; increasing the current four trains per hour between the cities to 6 and reducing journey times to 37 minutes.

Glasgow has one of Europe's most effective public transport systems, according to the 2003 European Cities Monitor.

Cushman & Wakefield Healey & Baker

Edinburgh - Best urban bus service outside London, currently short listed for the UK Bus Awards 'Operator of the Year' Award 2007.

²Source: BAA



People

Businesses relocating to Glasgow and Edinburgh say the quality of the workforce is the key factor in choosing the cities. Educational levels are higher than in comparable UK cities, wages are competitive and the workforce is flexible, enthusiastic and enterprising.

One of the cities' key assets is its young, skilled and highly motivated workforce, which has a reputation for its "can-do" attitude and loyalty.

The cities are committed to education, training and development from an early age. Nearly 40%³ of our working age population are qualified to NVQ Level 4 and above.

The eight universities and 25 colleges located in Glasgow and Edinburgh are among the best in the UK, producing the majority of Scotland's 70,000 annual graduates.⁴

The cities can offer:

- A large stock of skilled and adaptable workers (2.5 million within a one hour commute of each city).
- Our talent pool is valued by thousands of companies and many government departments and agencies.
- Glasgow and Edinburgh's workforce is among Europe's most highly qualified and competitively priced.
- Labour costs are 30% lower than London's.
- We have successful targeted local recruitment programmes.
- There is untapped potential for departments - with a high proportion of our graduates currently under-employed in their current posts.



Edinburgh has the highest qualified population in Scotland (with 46% having a degree or equivalent qualification).

Source: NOMIS Official Labour Market Statistics 2006

Glaswegians have an international reputation for their strong work ethic and loyalty. Voluntary labour churn is low.

Source: Ernst & Young LLP

³ Average of both cities working age population - NOMIS Official Labour Market Statistics (2007)

⁴ Scottish Government Statistics (2006)

Property



Glasgow and Edinburgh offer highly competitive rental rates that are lower than most major cities across the UK. As vibrant and cosmopolitan places to do business the cities have a vast array of support services.

The cities offer:

- A massive stream of exciting new developments, including:
 - Glasgow - major regeneration projects which provide an opportunity to drive economic growth and directly impact key sectors, these include the International Financial Services District; Pacific Quay Digital Media Campus; Clyde Gateway; City Science; and Clyde Waterfront; and
 - Edinburgh - major regeneration projects providing substantial new housing and business land supplies such as Waterfront Edinburgh and Craigmillar/Bioquarter; and a huge range and choice of office options including the Waterfront, Edinburgh Business Park and city centre (e.g. Edinburgh Quay, Quartermile).
- Occupancy costs per workstation for Grade A prime location sites which can be up to 30% lower than other UK locations.
- A sustained pipeline of Grade A developments means there is a sizeable choice of world class accommodation, with a clear investment strategy for growing Grade B developments to meet market demand.
- An environment to meet and exceed the most demanding technology requirements of today's progressive government departments and agencies.

Regeneration Awards:

IFSD Glasgow -
Highly Commended for
Regeneration - RICS Awards
2006.

IFSD Glasgow -
Best Commercial Led UK
Regeneration Project
(UK Regeneration Awards 2005).

Edinburgh Quay -
Best Regeneration Project in
Scotland - Scottish Design Awards
2005.

Edinburgh Science Triangle -
Most Enterprising Area in
Scotland, DTI Awards 2007.

Glasgow and Edinburgh
A Great Choice



Both Glasgow and Edinburgh are tried, tested and highly successful locations for government relocations. The cities attract world-class companies. But why choose Glasgow or Edinburgh as a location for your department/agency?

Well, here are some of the highlights:

- The cities generate one third of Scotland's GDP.
- They have a young, highly-qualified and fast-growing population.
- Have one of the UK's largest knowledge bases, world-class universities, with many talented graduates choosing to work here.
- Provide one of the most sophisticated and competitive telecommunications operating environments in Europe - with 100% digital telecoms and top broadband speeds in the UK.
- Offer one of the UK's finest retail and entertainment experiences.
- Offer a premier international conference destination and one of the UK's biggest short-break markets.

The European Commission named the Edinburgh city region a Region of Excellence for Innovation in 2002. It was subsequently named as an "Ideopolis" (or "sustainable knowledge city") by the Work Foundation, one of only two in the UK.

Both cities are in the top 10 rankings for the Best City to Locate a Business Today - Glasgow sixth and Edinburgh eighth - UK Cities Monitor 2007.

The centre of Edinburgh was designated a World Heritage site by UNESCO in 1995 - Ironbridge Gorge near Telford and Georgian Bath are the only other two sites in Britain. It was later designated European City of the Year 2006 by the Academy of Urbanism.

Glasgow retained its number one position as the UK's best place to locate a call centre and came in second place for cost of staff. Overall Glasgow appears in the top five cities in the UK beating rivals in important categories such as international transport links (fourth), availability of office space (fourth) and best cities for a new back office function (fourth) - UK Cities Monitor 2007.



Voted the Financial Times
"European Region of the Future
2004/5" - Edinburgh's economy
outperforms cities in the UK
and Europe.

Growing Business Magazine
reported that Glasgow is the
best place in the UK to run
a business (2005). Research
covered critical business issues
including transport links, cost
of premises, availability of skilled
workers, crime levels and access
to government and EU grants.

14 : Glasgow and Edinburgh
Great places to live, work and play

Glasgow and Edinburgh are currently home to:

British Council

Crown Office Scotland

Department for Communities and Local Government

Department for Culture, Media and Sport

Department for Transport

Department for Work and Pensions

Department of Health

Department of Trade and Industry

Forestry Commission

Health and Safety Executive

HM Revenue & Customs

HM Tribunal Service

Home Office

Ministry of Defence

National Archives of Scotland

National Savings and Investments

Office of Communications

Office of Gas & Electricity Markets

Office of Government Commerce

Registers of Scotland

Scotland Office

Scottish Court Administration

Scottish Government

Scottish Parliament

Edinburgh only

Glasgow only

Located in both cities



The cities have one of the UK's largest knowledge bases, world-class universities, with many talented graduates choosing to work here.



I can run and cycle in open countryside without needing to jump in the car, and all the benefits of a major city like Glasgow are only 25 minutes away by train.

: Testimonial from Simon Gill, Head of Corporate Planning and Performance, Department for International Development

"I work for the Department for International Development and moved to Scotland in 2005 as part of a wave of relocations from our headquarters in London to our second base in East Kilbride on the outskirts of Glasgow.

I have exchanged my daily commute into London by train to one across some beautiful countryside. We have settled as a family into a small rural village with good schools and community facilities. My wife has found work locally and my daughter has settled into the village school.

I can run and cycle in open countryside without needing to jump in the car, and all the benefits of a major city like Glasgow are only 25 minutes away by train. We are about 30 minutes away from the coast and the rest of Scotland is easily accessible which in turn opens up a wealth of leisure facilities and places of interest.

I am usually in London once a month and have a choice of excellent travel options including the sleeper, conventional travel by train and a wide range of flight options from Glasgow airport.

The profile of our Scottish office continues to rise with an increase in the number of policy, research, operational and high visibility corporate jobs. We are continuing to build links across the public sector, have a number of secondments with the Scottish Government and are recruiting high quality professional staff in finance and statistics. Our Scottish base has been particularly important in retaining and attracting staff who want to pursue a career in international development but who do not wish to be based in London.

In 2006, the Department was subject to a peer review by the Development Assistance Committee of the OECD, which recognised both the significance and flexibility that working on two sites provides and identified the interest of other European governments who are also considering relocation options."

Outstanding Quality of Life



Glasgow and Edinburgh are great places to visit, live, work and do business. They are amongst Europe's most dynamic and modern cities, yet steeped in culture and history. The traditional friendliness and openness of our people ensure you are guaranteed a warm welcome.

Both cities offer:

- An exciting mix of world-class culture. From Scottish Ballet to modern dance, Scottish opera to rock concerts and some of the finest collections of civic art in Europe. Edinburgh's world famous summer and winter Festivals are complemented by year round events in both cities.
- A superb selection of first-class housing at costs lower than the rest of the UK.
- The highest performing schools and universities in Scotland. The cities have eight universities and 25 colleges.
- When it comes to culture, leisure and pleasure pursuits, Glasgow and Edinburgh are hard to beat. With a host of "Best City" awards the cities are much admired and much visited. MORI found Edinburgh to have the highest residents' satisfaction of any city ever surveyed by the company.
- A world-class retail scene - Glasgow is ranked first in the UK outside of London's West End.

- One of Europe's fastest growing conference destinations. With an impressive track record of hosting major international events and conferences, including the world-famous Edinburgh Festivals. The Festival Fringe is the largest arts festival in the world. A range of available venues are backed up by world-class hotels to ensure visitors are catered for in every way.
- Some of Europe's finest scenery and outdoor activities lie within easy reach. The cities are surrounded by mountains, lochs, seascapes and rolling countryside. The glorious scenery of the Scottish Highlands, Loch Lomond and some of the greatest golf courses in the world are a short trip away.

Glasgow will host the 2014 Commonwealth Games. The Games will benefit the whole of Scotland - it offers our country a chance to advertise Scotland to a global audience of over 1 billion people and host one of the biggest sporting and cultural extravaganzas.

Quality of Life Surveys rank Edinburgh as one of the best locations nationally and internationally to live and work.

Glasgow was named "UK's Coolest City 2003" by National Geographic Traveller Magazine.



Edinburgh was voted as the city with the best quality of life for the second year running and also top for freedom from pollution

UK Cities Monitor 2007

Glasgow voted UK's favourite city by readers of Condé Nast Traveller 2006.

"The view as you walk out of Edinburgh's Waverley Station is probably the finest first impression of any city in the world."

Lonely Planet Travel Guide.



: Our Service

This brochure provides you with a summary of some of the benefits that relocation to Glasgow and Edinburgh can bring. Scottish Development International (SDI) and local authority contacts can co-ordinate the following services for you:

- Information tailored to the needs of relocating departments and staff.
- Co-ordinate contact with intermediaries who can assist departments with the relocation process, for example, property developers and recruitment agencies.
- Work with department's relocation managers to help make the business case for relocation.
- Organise familiarisation visits to Glasgow and Edinburgh for relocation managers and staff to view sites and premises in the cities.

: Contacts

We have well established procedures in place for both public and private sector clients to support relocations, provide information and give tailored assistance as required. For further information contact:

Brian Conley

Scottish Development International

t: 0207 002 1406

e: brian.conley@scotent.co.uk

Richard Cairns

Head of Economic & Social Initiatives

Glasgow City Council

t: 0141 287 7294

e: richard.cairns@drs.glasgow.gov.uk

Kenneth Wardrop

Interim Head of Economic Development

The City of Edinburgh Council

t: 0131 529 3201

e: kenneth.wardrop@edinburgh.gov.uk



Labour Market Profiles - Glasgow and Edinburgh¹

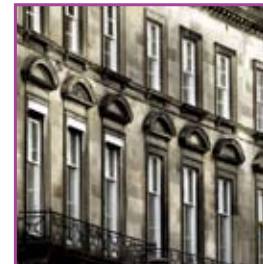
Indicators	Date	Glasgow	Edinburgh	GB
Total Population	2005	578,800	457,800	58,485,000
Working Age Population	2005	66.0%	67.4%	62.1%
Economically Active	Jan-Dec 2006	70.1%	81.2%	78.6%
Economically Inactive	Jan-Dec 2006	29.9%	18.8%	21.4%
% of Management Posts	Jan-Dec 2006	10.4%	15.4%	15.0%
% of Professional Posts	Jan-Dec 2006	16.6%	21.0%	13.0%
% of Professional Posts and Technical Posts	Jan-Dec 2006	14.1%	15.0%	14.3%
% of Administrative and Secretarial Posts	Jan-Dec 2006	13.9%	13.3%	12.1%
% with NVQ4 qualification and above	Jan-Dec 2006	30.9%	44.9%	27.4%
% with NVQ3 qualification and above	Jan-Dec 2006	48.6%	64.1%	45.3%
% with NVQ2 qualification and above	Jan-Dec 2006	62.1%	76.6%	63.8%
% with NVQ1 qualification and above	Jan-Dec 2006	71.8%	84.5%	77.7%
Earnings by residence (gross weekly pay - full-time workers)	2006	£399.1	£486.6	£449.6
Earnings by residence (hourly pay - full-time workers)	2006	£10.19	£12.83	£11.26
Total JSA claimants	July 2007	3.8%	1.9%	2.3%
Working-age client group - key benefit claimants	Feb 2007	25.9%	12.9%	14.7%
Jobs Density	2005	1.16	1.13	0.84
Earnings by workplace (gross weekly pay - full-time workers)	2006	£415.1	£469.8	£448.6
Earnings by workplace (hourly pay - full-time workers)	2006	£10.61	£12.33	£11.24

: Prime Office Rents as at March 2007 (per sq.ft/yr)²

London (City)	London (West End)	Manchester	Birmingham	Glasgow	Edinburgh
£65	£110	£29	£33	£27	£27

: Average House Prices - June 2007³

City/Region	Average Price
Greater London	£354,529
Edinburgh	£203,547
Glasgow	£141,077



Sources:

¹NOMIS Official Labour Market Statistics (2007)

²Cushman & Wakefield Research - Quarter 2 (2007)

³Source: BBC News (June 2007)



• Links of Interest

Business

RSA Scotland
www.rsascotland.gov.uk

Scottish Development International
www.sdi.co.uk

Scottish Enterprise
www.scottishenterprise.com

Scottish Government
www.scotland.gov.uk

Talent Scotland
www.talentscotland.com

Scottish Financial Enterprise
www.sfe.org.uk

Glasgow City Marketing Bureau
www.seeglasgow.com

Glasgow:

IFSD Glasgow
www.ifsdglasgow.com

Glasgow City Council
www.glasgow.gov.uk

Glasgow Chamber of Commerce
www.glasgowchamberonline.org

Glasgow Economic Facts
www.glasgoweconomicfacts.com

Edinburgh:

Edinburgh Inspiring Capital Brand
www.edinburghbrand.com

City of Edinburgh Council
www.edinburgh.gov.uk

Capital Review (includes statistics)
www.capitalreview.co.uk

Edinburgh Chamber of Commerce
www.ecce.org

Office Space Glasgow:

Pacific Quay
www.pacificquay-developments.co.uk

International Financial Services District
www.ifsdglasgow.com

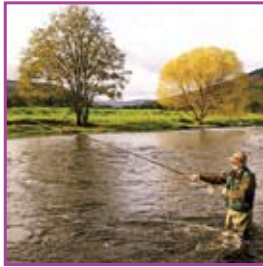
Clyde Waterfront
www.clydewaterfront.com

City Science
www.scottishenterprise.com/cityscience

Edinburgh:

Waterfront Edinburgh
www.waterfront-ed.com

Quartermile
www.qmile.com



Edinburgh Science Triangle
www.scottish-enterprise.com

Edinburgh Quay
www.edinburghquay.co.uk

Transport

BAA Glasgow
www.glasgowairport.com

BAA Edinburgh
www.edinburghairport.com

Transport Scotland
www.transportscotland.co.uk

Strathclyde Partnership for Transport
www.spt.co.uk

South East Scotland Transport
www.sestran.gov.uk

Education

University of Glasgow
www.gla.ac.uk

University of Strathclyde
www.strath.ac.uk

Glasgow Caledonian University
www.gcal.ac.uk

University of Edinburgh
www.ed.ac.uk

Heriot-Watt University
www.hw.ac.uk

Napier University
www.napier.ac.uk

University of Paisley
www.paisley.ac.uk

Queen Margaret University
www.qmuc.ac.uk

The Glasgow School of Art
www.gsa.ac.uk

Edinburgh College of Art
www.eca.ac.uk

Royal Scottish Academy of Music and Drama
www.rsamd.ac.uk

Technology

Targeting Innovation
www.targetinginnovation.com

Tourism

VisitScotland
www.visitscotland.com

Scottish Exhibition + Conference Centre
www.secc.co.uk

Eventful Edinburgh
www.eventful-edinburgh.com

Edinburgh Convention Bureau
www.conventionedinburgh.com

Edinburgh International Conference Centre
www.eicc.co.uk



With thanks for photography provided by:



and Steve Hosey, DRS Graphics, Glasgow City Council

This document is printed on Revive 50:50 paper.
Revive is certified as a FSC mixed sources coated grade
containing 50% recovered waste and 50% virgin fibre.

collaborating to compete
glasgow : edinburgh

