

Themed Trails for you to follow!

Discover the hidden gems of Pollok Country Park, including The Burrell Collection and Pollok House ...

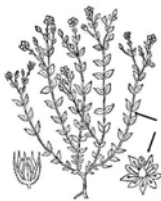
Food

The Wildlife Garden

This is situated near the Old Stable Courtyard towards the river walkway. The patio area has half barrels planted with kitchen/garden herbs such as Thyme, Mint and Oregano.

Notice the medicine bed on the other side of the garden, with many food and medicine plants. Using the interpretation boards, which common kitchen herb, used for flavouring Turkey stuffing at Christmas, is also used to gargle with, to help a sore throat?

Thyme



Demonstration Vegetable Garden

Beside the demonstration gardens and behind the Old Stable Courtyard, is the demonstration vegetable garden.

This is where many of the old varieties of potato and cabbage are still grown.

The fruit cages at the back of the garden contain a variety of interesting soft fruit including, White Current and Chinese Wine Berries.

Against the walls, fruit trees (apple & pear) are trained to grow along wires, this is called pleaching, and can take many forms, allowing for a high yield in a compact area.

Avenue of Lime Trees

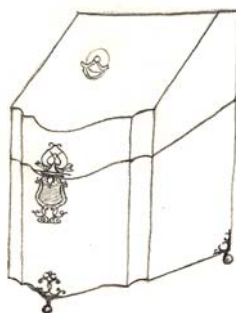
Walk towards Pollok House. Opposite the Pollok House car park, on the grassy slope, you will see an avenue of Lime Trees lining the old road to Hags Castle. These trees are easily identified by branches and leaves growing all down the trunk. Young Lime leaves make an excellent green vegetable, used like lettuce in a sandwich. (With nearly half a million leaves on a large tree there is plenty to go around.) A small handful of the Lime flowers also makes a very relaxing and slightly sweet tea.

Pollok House

Cutlery Boxes

These are in the marquetry cabinet in the Centre Room. The boxes would have contained the silver cutlery used in the Dining Room. Only the Butler held keys to them as the valuable cutlery was liable to petty theft.

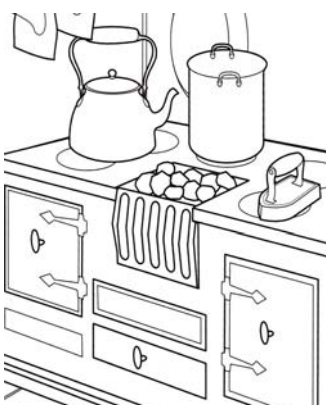
Cutlery Box



Pollok House

Still Room Range

This range was used for making sweet snacks. Whereas the other range in the kitchen (restaurant) made the three main meals of the day. On the Still Room range there would be large copper Jelly Pans for making jam and jelly, griddles for pancakes and biscuits, and the oven would have been used for baking cakes.



Still Room Range

Pollok House

China Closet

This was used for the storage and washing of fine china. Only the Housekeeper herself would wash this china (thus ensuring the painted patterns weren't scrubbed off the fine porcelain). Also, unlike sinks in a scullery, the surround and floor were all wooden thus minimising any breakage.

The Burrell Collection, Tapestry Gallery

An open-air meal in the garden of love, French / Flemish Tapestry, early 1500s

This large tapestry shows a group of rich people enjoying a picnic in the French countryside. Tapestries were very expensive and would have hung on the large, stone walls in castles. On the table are a selection of objects and food. What kind of things can you see? To the right a servant pours wine, and in the pond at his feet is another container of wine. Why do you think the container might have been put in the pond?

The Burrell Collection

Hutch, English, early 1500s

From the tapestry turn around and walk down the gallery. Go through the stone arched doorway and find the Hutch.

This piece of furniture was made using oak.

On the front is a latched door and inside are shelves.

It would have been used to store food and drink.

The carved shapes on the front of the hutch would have acted as ventilation as well as decoration.

What do we use today for storing our food and drink in?

Why not pick up our 'WOOD' themed trail leaflet at Pollok House, The Burrell or The Stables.

The Burrell Collection

Set of trenchers, English, late 1500s

From the Hutch turn to your right. Walk straight through to the room with a large wooden fireplace. Look for four flat, circular objects, this is the Set of trenchers.

These small, round, thin pieces of wood would have been used as plates. Sometimes pieces of stale bread were also used as plates. These trenchers are quite grand as they are painted with colour and gold. They also have songs written on them so that people could sing after the food had been eaten. Did you see trenchers like these on the table in the tapestry?