

EVENTS . . .

Glasgow Festival – The Glasgow Show took place on Glasgow Green on 1st and 2nd of August this year. Within the Floral Zone marquee the Friends of Glasgow Green and Friends of Glasgow Necropolis had a stand to promote their groups.

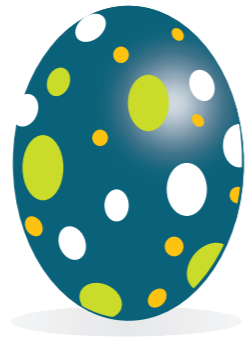
Pollok Family Day – This year's Family Day was on Saturday 8th August with up to 40,000 visitors attending. An area was set aside in a small marquee where the Friends of Linn Park and Friends of Rosshall Park & Gardens had a stand to promote their group.

Doors Open Day – This year, there were a number of groups taking part in the Doors Open Day from 16-20 September, these included – Friends of Glasgow Necropolis, Friends of Provan Hall, Friends of the Weavers

The above events help Friends to promote their groups to a wide audience and encourage new members. If there is any group wishing to participate in any of the above events next year 2010 then please contact – Project Officers, Ian or Alex at the phone number, email listed below.

Glasgow has a wide range of events planned.
For details go to www.glasgow.gov.uk/parks

THE GREAT NASEBY EGG HUNT



Spring was in the air on Saturday 28th March, when the Friends of Naseby Park in Broomhill, held the Great Naseby Egg Hunt.

That afternoon, lots of fun was had following the mystery daffodil trail to win an Easter surprise. As well as a lucky dip, egg painting, cake stall, book and CD swap, face painting and hair spraying, the highlight was the bike-a-like contest where over 40 children dressed up with their bikes, trikes and scooters for the park parade. Children from Broomhill Primary School and its After School Club created Painting on Railings, which were much admired. The day would not have been possible without the generous grant from Partick West Local Area Committee.

For more information on the Friends of Naseby Park contact write2nasebyfriends@hotmail.co.uk ;
phone/text 07984 956742
Website: www.friendsofnaseby.co.uk

Friends of Glasgow Parks

Issue 3 Autumn 2009

news



Bellahouston



Park

Awards for All

The Friends of Kings Park were successful in applying to the Heritage Lottery 'Awards for All' scheme to provide information cabinets for Kings Park.

They have purchased six cabinets which have been placed at each entrance to the park. The cabinet has two glass cases one of which will display a map of the park and the other will be used to display information about the park, friends group and any events etc.

Publications

Since the last issue Land and Environmental Services Parks Development team have been involved in preparing further trail booklets. They are:-

- Carmunock Copice Woodland**
- Queen's Park Heritage Trail**
- Botanic Gardens Heritage Trail**
- Stewart Memorial Fountain Heritage Trail**
- Tollcross Park Heritage Trail**



NEWS, VIEWS, OPINIONS - Write to the Project Officers

If you have any good news stories, views or opinions you would like to share for the next edition, send in your comments, images or suggestions to the Project Officers, Ian Fraser and Alex Morrison at

Land and Environmental Services,
Glasgow City Council,
37 High Street,
Glasgow G1 1LX

Email
alex.morrison@ls.glasgow.gov.uk
ian.fraser@ls.glasgow.gov.uk

Phone
Alex Morrison 0141 287 3681
Ian Fraser 0141 287 3723

Look out for the next issue featuring **Kelvingrove Park**



Bellahouston was part of the lands of Govan in the 16th century. In 1832 Moses Steven of Polmadie purchased the Bellahouston House formerly known as Dumbreck House and all the lands of Dumbreck. Moses Steven died in 1871 and was succeeded by his sisters Elizabeth and Grace Steven who in the same year established the Bellahouston Trust. In 1895, 176 acres of the estate along with Bellahouston House were sold by the Trustees of the Bellahouston Bequest Fund to Glasgow Corporation for the sum of £50,000.

Bellahouston Park hosted the Empire Exhibition of 1938, the largest exhibition ever mounted in Scotland, on the 50th anniversary of the International Exhibition of 1888. The site took 14 months to build and the cost of admission was one shilling (5p). Over 12 million visitors attended the site but despite this, the exhibition made a loss of £130,000. Of the 200 palaces and pavilions built for the exhibition only the Palace of Art remains – it now serves as a Sports Excellence Centre.

Another significant date in the park's history was the pastoral visit of Pope John Paul II. As part of his pastoral visit to Great Britain, his Holiness celebrated Holy Mass in Bellahouston Park on June 1st 1982 with over 300,000 people from all over Scotland.

In 1996 Charles Rennie MacKintosh's House for an Art Lover was completed from the original drawings of 1901 and now serves as a contemporary exhibition centre and cultural attraction where visitors can marvel at the collections displayed in the MacKintosh exhibition rooms.

The park has a number of outstanding features such as the Victorian Walled Garden with its fine collection of ferns, herbaceous border and annual borders, Sculpture Garden and three outstanding play areas.

Serious sports enthusiasts and aspiring athletes are well catered for, enjoying the Leisure Centre and Swimming Pool, Bowling greens, pitch and putt, community cycle track and Glasgow Ski Centre.

Two significant art works were unveiled in 2008, 'Glasgow Roots' and 'AMAZE', consolidating new dimensions for a public park. This led to ART PARK – Glasgow, Bellahouston Park winning the Scottish Design Awards 2009 in the Public Realm/Landscaping category.



St Francis Pipe Band

The Friends of Glasgow Green staged a very success full concert by the Gorbals' St Francis Pipe Band on Saturday 8th August outside the Winter Gardens. The sun came out and there was toe tapping all round.

Friends of Glasgow Green were delighted to be able to bring entertainment to the crowds in Glasgow Green on a sunny summer Saturday. Visitors to the Peoples Palace and the tourists emerging from the many tour buses took great interest in the pipe band performing in the new futuristic looking amphitheatre. The sound of the pipes wafting over the Green also provided a great backdrop to those just casually enjoying the openness of the area and the architectural delights of the Templeton Factory, the Doulton Fountain and the Peoples Palace.

It is the intention of the Friends group to try and showcase local talent at the amphitheatre. As a local pipe band St Francis came into this category and they made clear that they were especially pleased to be playing on their own doorstep. It also gave them an opportunity to practise and to bed in some new members prior to the World Pipe Band Championship in the Green. They also had the opportunity to raise some funds through selling their CD. Similarly Friends of Glasgow Green raised their profile and brought in some much needed money by setting up a stall and selling the excellent Wee Green Book covering the history and the importance of the Green.

Friends of Glasgow Green are keen to expand their activities and to bring more local entertainment to the Green. There is talk of liaising with the Council and trying giving local dance groups, choirs and others the opportunity of performing in the unique setting of Glasgow Green. The Friends group say that they will even organise the sunshine.

If you are a local group and are interested in the possibility of performing in the bandstand please contact Martin Dean, Secretary, on 07538 094260 (deanm@northlan.gov.uk) or Margaret Hattie, Chairperson, on 0141 564 1797



Glasgow Groups Go For Lottery Millions

As reported in issue 2, The Friends of Linn Park were successful in achieving an award of over £50,000 from the People's Millions Lottery Fund at the end of last year.

The money was applied for to transform a neglected area of beauty in Linn Park into an accessible space where people can stop to enjoy the view and the wildlife that the spot can offer. The project, named the 'White Cart Beach', has now commenced, and it is hoped will be complete by August this year.

Alison Drummond, Chair of the Friends of Linn Park, stated "Our group has worked alongside Land and Environmental Services to plan and undertake the work, which involves the creation of permanent pathways to make the area more accessible, and forming of a picnic area with suitable furniture to allow people to rest in this tranquil spot.

The paths are already taking shape, and it is great to see the area transforming. We hope the users of Linn Park will enjoy it. **Thanks to the People's Millions Lottery Fund, we have been able to contribute some investment towards our local 'dear green place'.**



Friends of Rosshall Park

The 'Friends' group was formally launched in Rosshall Academy on Thursday 14 May 2009

The group's aims are to support and promote greater awareness of the historic gardens. It has established links with local community groups and schools and aims to further Rosshall Park and Gardens as a centre for environmental and historical education.

Located within Rosshall Gardens is the distinctive Pulham and Son Rockery which dates back to 1891. It incorporates a grotto, cliffs and cyclopean paths which combine natural stone components made of 'Pulhamite' authentically sculpted concrete almost indistinguishable from natural stone.

If you are interested in joining the Friends group please contact – Project Officers, Ian or Alex at the phone number, email listed on the back page of the News



PLANETARIUM AT PROVAN HALL

On the 12th of February 2009 in conjunction with the forestry commission the Friends of Provan Hall had a Star Gazer Night. This saw the courtyard of the house being covered in a portable Planetarium and everyone was given a demonstration on how comets are formed. The event was free and open to all children and adults and around 60 people attended. All those who attended made rockets and launched them and had a great night.

For further information, contact the Friends of Provan Hall on 0141 773 1202.