

An aerial photograph of Glasgow city centre, showing a dense urban landscape with historic stone buildings, a prominent green-domed church spire, and a view of the city extending to the hills in the distance where several wind turbines are visible. A large red rectangular box is superimposed over the center of the image, containing the title and subtitle text.

# GLASGOW CITY CENTRE

## ECONOMIC HEALTH CHECK

APRIL 2015  
NO. 13



Welcome  
to the thirteenth  
edition of

# Glasgow city centre's ECONOMIC HEALTH CHECK:

A progress report on how the city centre is performing on a range of indicators. This edition, produced by the City Centre Regeneration Team within Development and Regeneration Services, covers the period July - December 2014 (unless otherwise stated).

## What is the Health Check?

The objective of the Health Check is to track the impact of economic activity on the city centre, and to provide a baseline from which future performance can be benchmarked.

## Trends

The table below provides an at-a-glance colour coded trend indicators.

Colour codes as follows:

- - Improvement
- - Relative stability
- - Decline

### Planning & Development

Application rates continue to show upward trends - retail rates hit highest levels.

### Cleanliness

KSB city centre audit shows improvement over previous report.

### Vacant units

Average vacancy rates continue to show relative stability and compare favourably with the rest of the UK.

### Footfall

Average headline/overall footfall is up, with Night Zone footfall showing record highs.

### Tourism

Hotel occupancy rates and visitor feedback hit highest levels, Airport passenger levels continue to increase.

	Contents	Page
	Style Mile Background/ Map/ City Ranking	4
1	Footfall .....	6
2	Vacant units .....	13
3	Vacant Sites .....	16
4	Car parking .....	17
5	Environmental Indicators and City Centre Information .....	19
6	Planning & Development .....	23
7	Tourism .....	25
8	Glasgow Good News .....	29
9	Mailing List, Survey and Contact Detail .....	43



## Style Mile: Background and Area Map

The "Style Mile" relates to the square mile in the heart of Glasgow's city centre and is the principal retail area containing many unique independent designer and flagship stores for British and international retailers.

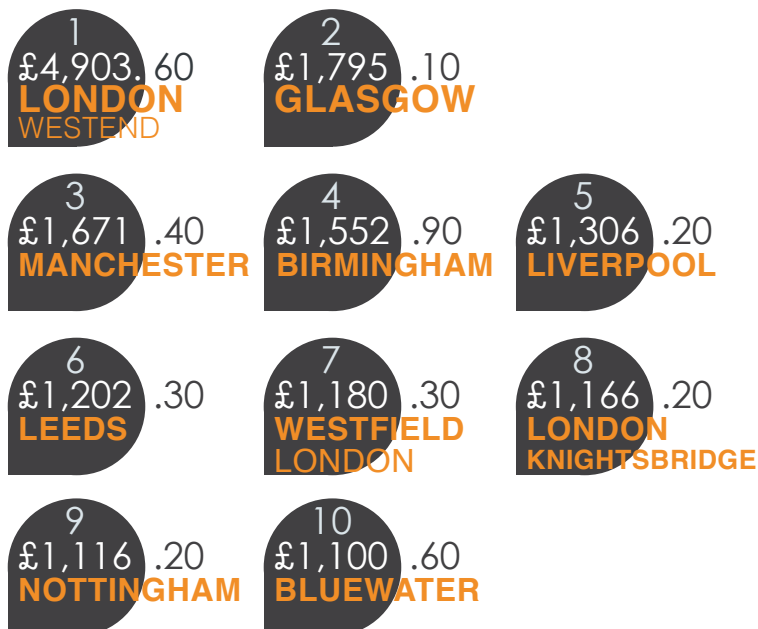
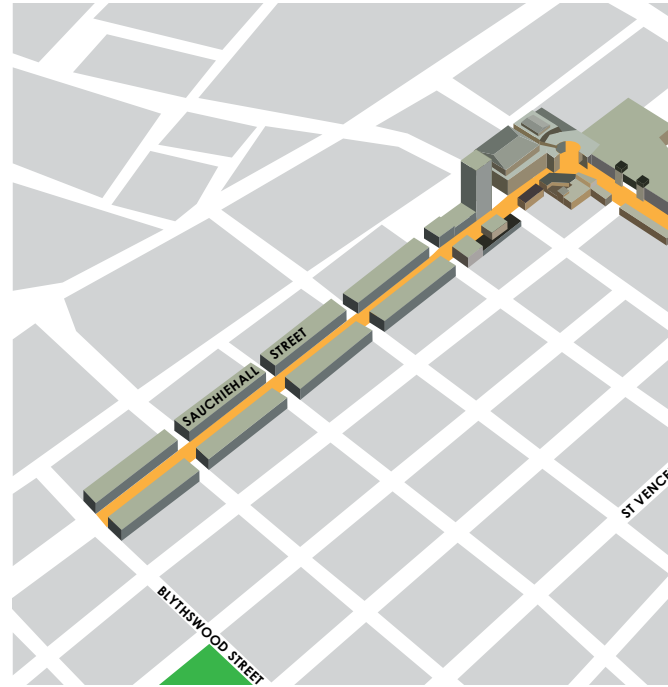


A map, retail guide and iphone app, (which provides up to the minute details on current promotional offers) can all be downloaded by visiting:



[www.glasgowstylemile.com](http://www.glasgowstylemile.com).

The Style Mile is a public private partnership initiative to promote, protect and enhance Glasgow's city centre retail offering and capitalise on the city's ranking as the UK's top retail destination outside London's West End.



### CACI's most recent Retail Footprint 2013<sup>1</sup>

Which monitors by comparison spend, shows the top ten rankings based on retail forecast expenditure (£m). Their findings continue to show **Glasgow remaining in 2nd place.**

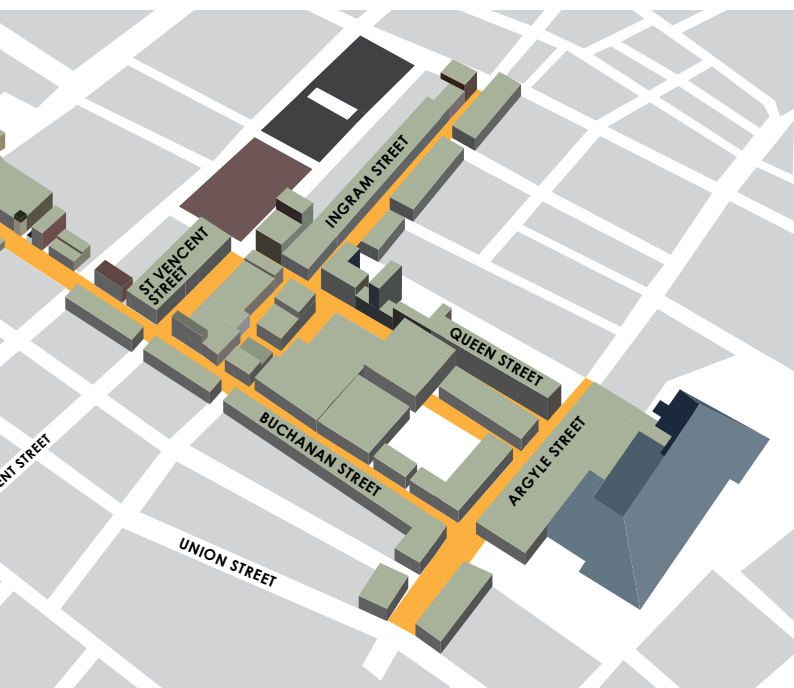


### CACI's.

research also ranks **Glasgow 8th** in the Top 10 Resilient Centres<sup>2</sup>.

<sup>1</sup> CACI Retail Footprint 2013 Ranking

<sup>2</sup> Source: British Marketing Survey 2011



## VENUESCORE Report 2014 - 15

Javelin Group is Europe's leading specialist retail and ecommerce consultancy and work with many of the regions largest retailers and distributors including most of the UK's top 20 retailers. Their VENUESCORE Report 2014 - 15<sup>4</sup> evaluates locations in terms of their provision of multiple retailers. A score is attached to each operator which reflects their overall impact on shopping patterns. The resulting aggregate scores are then ranked. The top ten scores are shown below. Whilst London's West End ranks far higher than any other location (with 1,398 points), the VENUESCORE report considers it comprised of a number of separate (albeit interlinked) retail venues. As a result, **Glasgow** currently ranks in first place.



The most recent Experian report<sup>3</sup>.

(ranking the UK's top retail centres based on comparison spend (£m)) continues to show **Glasgow in second place**.

1. **Glasgow** 785
2. **Manchester** 756
3. **Leeds** 622
4. **Birmingham** 621
5. **Liverpool** 569
6. **Brighton** 510
7. **Nottingham** 506
8. **Cardiff** 493
9. **Oxford St** 492
10. **Edinburgh** 491

<sup>3</sup> [www.experian.co.uk/marketing-services/news-retailscape-uk-retail-centres-best-placed-to-thrive.html](http://www.experian.co.uk/marketing-services/news-retailscape-uk-retail-centres-best-placed-to-thrive.html)

<sup>4</sup> Javelin Group (VENUESCORE 2014 - 15)

## 1. FOOTFALL

### 1.1 Style Mile Footfall

The Style Mile footfall monitor is based on Springboard's Customer Counting and Measurement system that registers footfall at designated counters located throughout the Style Mile. These four counters are located at:

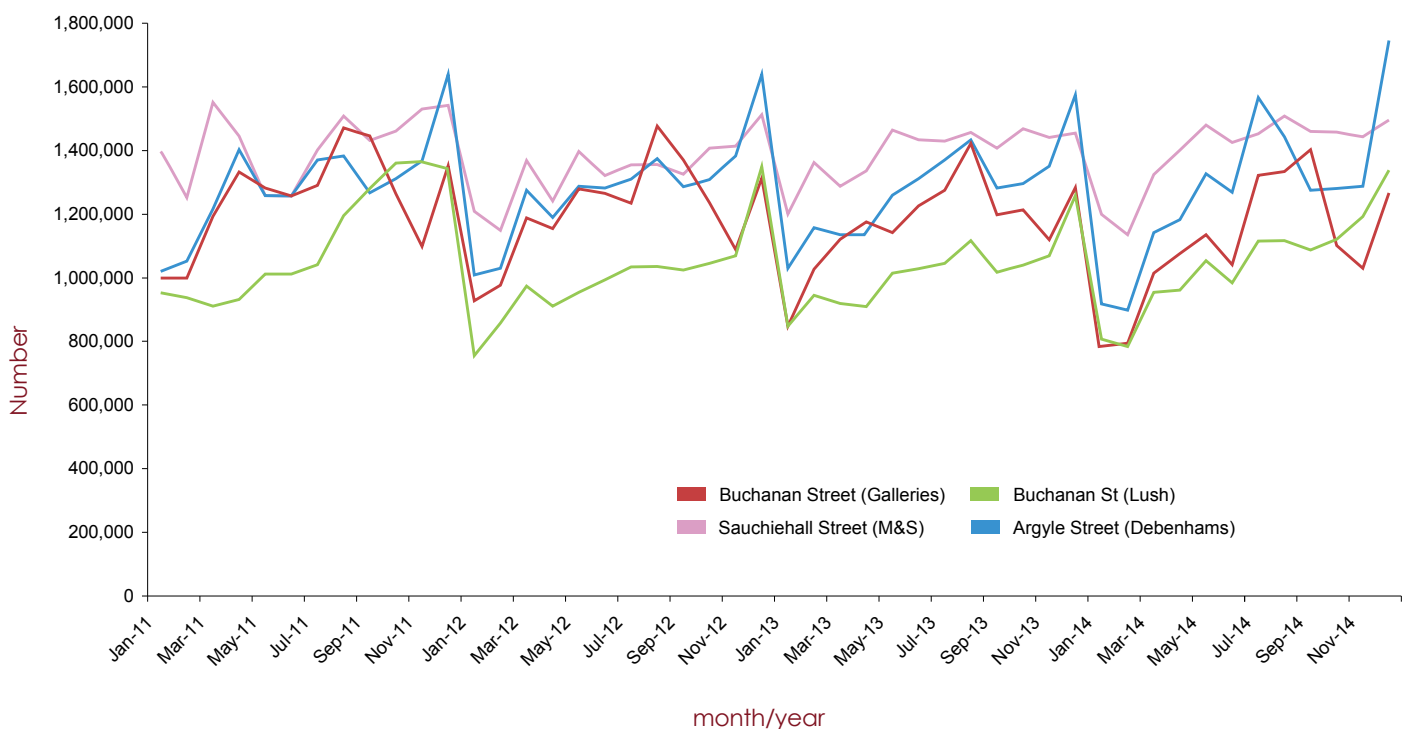
**Buchanan Street at Kiehl's**  
**Argyle Street at Debenhams**

**Buchanan Street at Galleries**  
**Sauchiehall Street at Marks and Spencer**

**Table 1a<sup>5</sup>** below shows data collated from these counters from **January 2011 - December 2014**. Springboard counters record footfall over each 24 - hour period and register both day and night time economy.

For period July to December 2014 there has been an average increase recorded of **2.70%** across all counters against the same period in 2013. Buchanan Street precinct (at Kiehl's) performed the best with an average increase of **6.47%**.

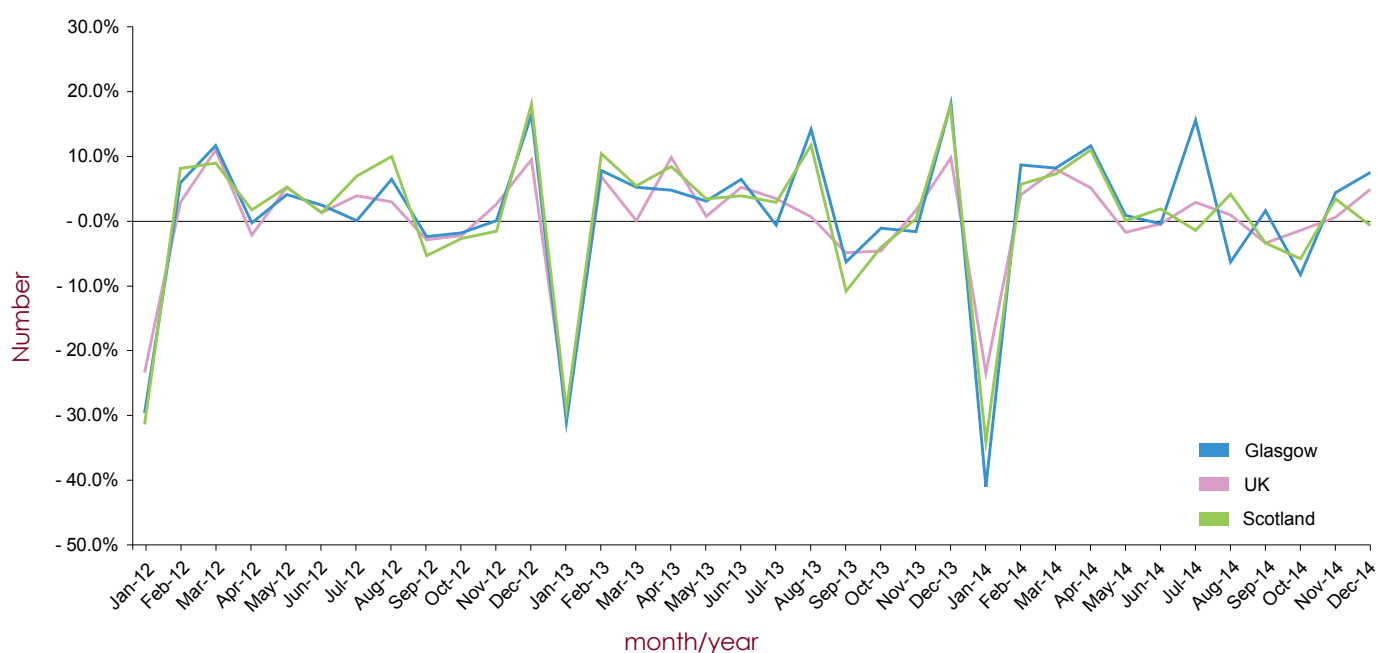
**Table 1a** City Centre Footfall January 2011 - December 2014





**Table 1b<sup>6</sup>** illustrates the monthly rate change (i.e. the month-on-month change) in Glasgow's footfall figures against comparator data from **January 2012 to December 2014**. The average figure calculated from the footfall recorded in Glasgow for the period of **July to December 2014** was **2.2%**. The Scottish national average footfall figure for this period was **-0.9%** with the UK national average footfall figure of **0.4%**.

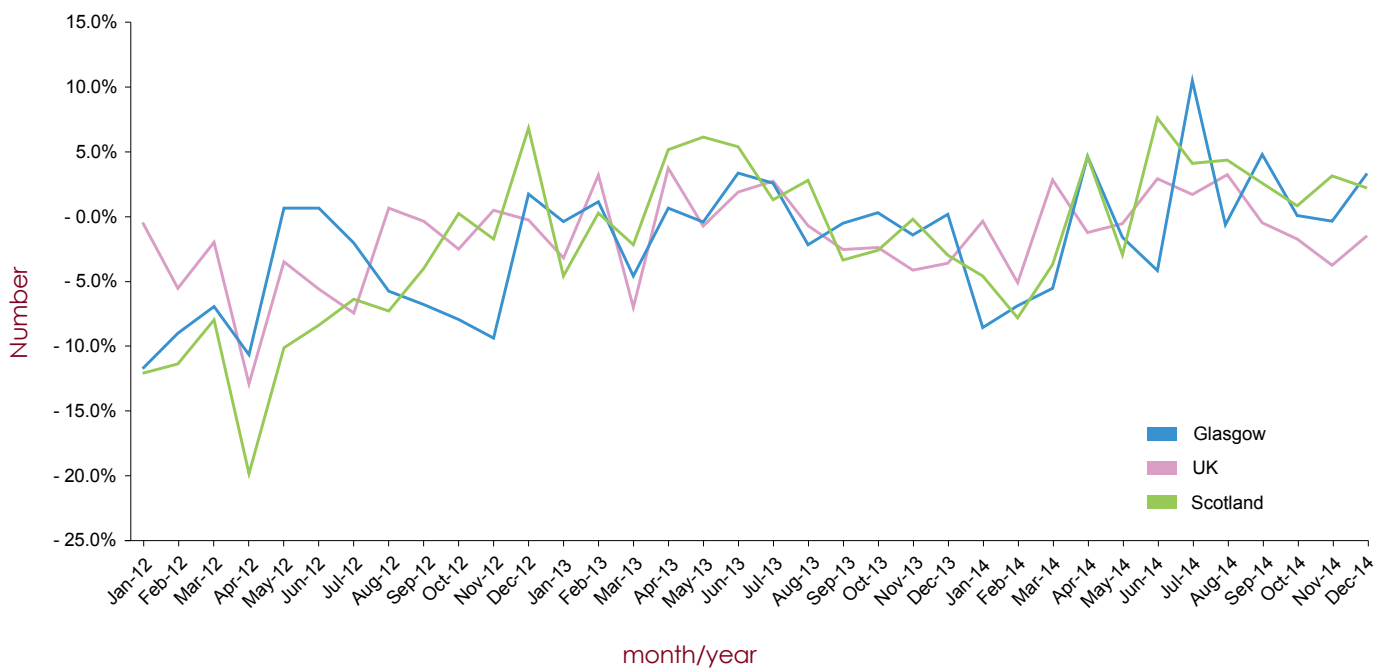
**Table 1b** ATCM - Springboard National High Street Index - Average Monthly % Change



<sup>6</sup> ATCM Springboard National High Street Index, March 2015

**Table 1c<sup>7</sup>** illustrates the annual rate change (i.e. year on year change) in Glasgow's footfall figures against comparator data from **January 2012 to December 2014**. The average figure calculated from the footfall recorded in Glasgow for the period of **July to December 2014** was **2.5%** - this equals the Scottish national average footfall figure for this period, also **2.5%**. The UK national average footfall figure for the same period was **-0.6%**.

**Table 1c** Springboard National High Street Index - Average Annual % Change



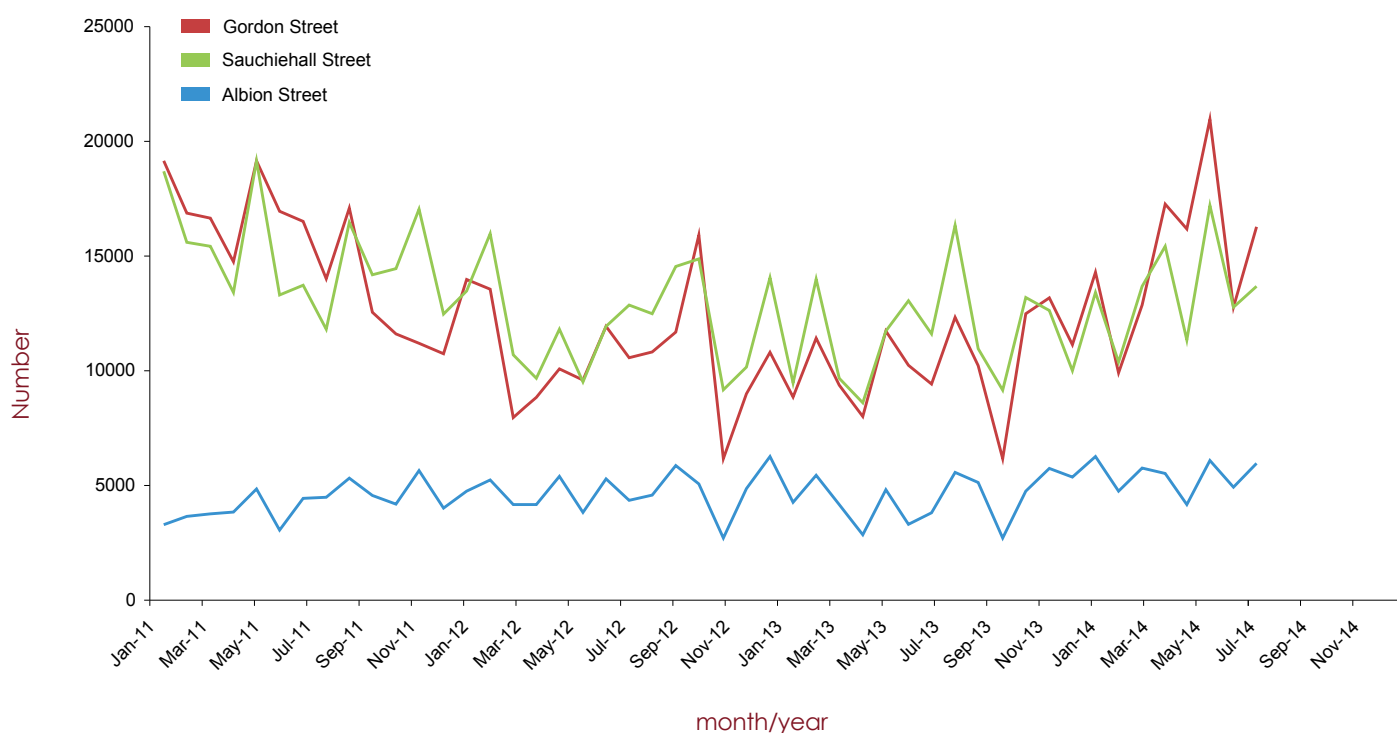


## Nitezone footfall

**Table 1d**<sup>8</sup> illustrates comparative Nitezone footfall figures from **January 2011 - December 2014**. The figures (relating to Gordon Street, Sauchiehall Street, and Albion Street within the Merchant City) are collated by taxi marshals who are present at the designated taxi pick up points between 10pm and 5am every Friday and Saturday night. They ensure the efficient, safe exit out of the city for users of the night-time economy.

Whilst the Nitezone footfall figures are collated on a weekly basis, Table 1d represents this data on a total-per-month basis. This allows for easier identification of developing trends. In this way, average footfall figures recorded in Gordon Street and Sauchiehall Street appear to have stabilised since mid-2012. Albion Street figures have remained stable throughout. The total Nitezone footfall recorded over all three-city centre precincts for the period **July to December 2014** was **32.49%** greater than the figures recorded for the corresponding period in 2013. Overall, the figures for the whole of 2014 were the strongest since 2011 and represent an increase of **21.82%** against all of 2013. In particular, October 2014 was the strongest month ever recorded.

**Table 1d** Nitezone footfall

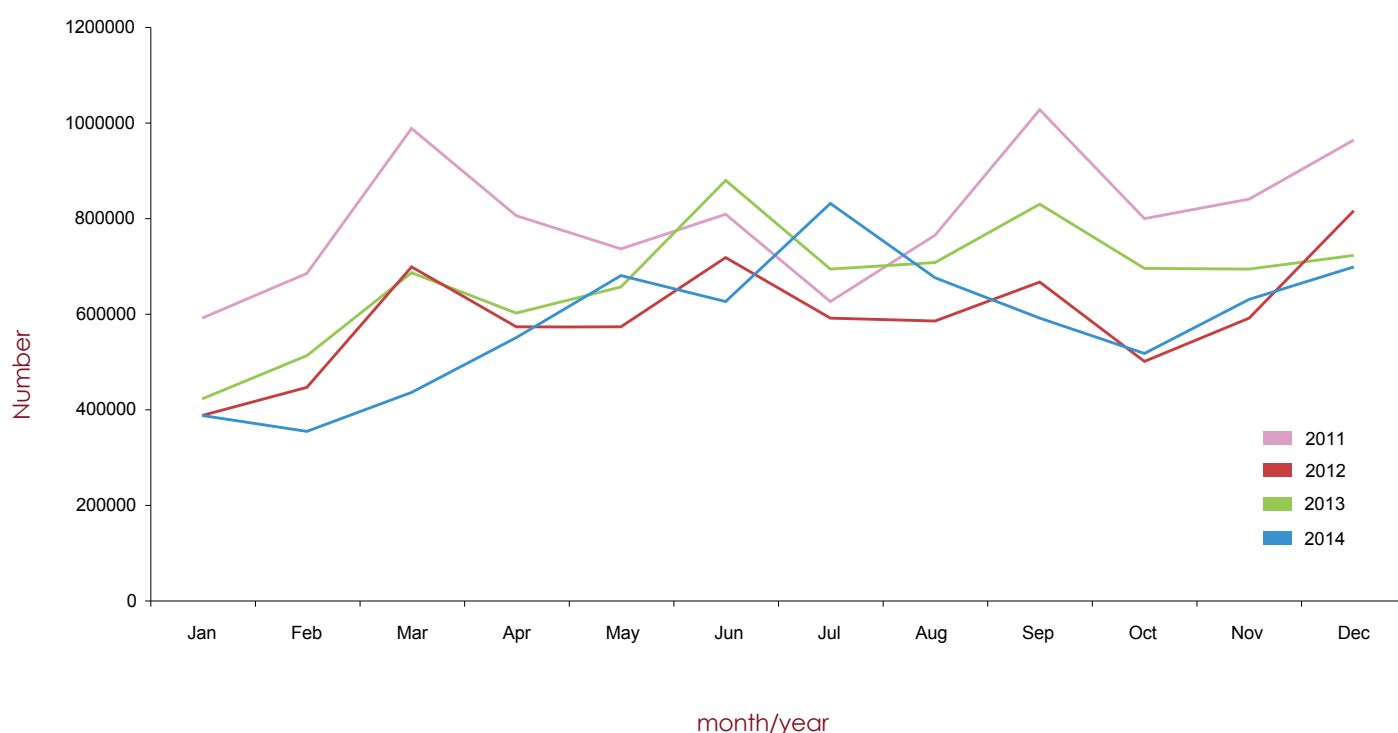


ATCM-Springboard collates the Night Time Economy Index<sup>9</sup> that measures the UK's high street footfall during the hours of 6pm – 4am. The UK national average annual percent change for period July to December 2014 against the same period in 2013 showed a slight fall of **-2.17%**. Scotland has been less negatively impacted, with a Scottish national average change of **-0.50%** for the same report.

Glasgow's figures are based on the footfall recorded by the Style Mile counters during the hours of 6pm – 4am. It should be noted that whilst this reporting provides some basic benchmarking, due to the placement of the footfall counters involved, it does not best represent the true Night Time Economy footfall, which is largely located elsewhere.

**Table 1e<sup>10</sup>** shows the Night Time figures for Glasgow Style Mile from January 2011 to end of June 2014. A comparison of the period July to December 2014 against the same period in 2013 shows that Glasgow's performance was poorer for every month. The sole exception was July 2014, which was the strongest July on record. Conversely, September 2014 was the poorest September on record.

**Table 1e** ATCM Springboard Glasgow Night-Time Economy Figures



<sup>9</sup> ATCM Springboard Night Time Economy Index – March 2015

<sup>10</sup> Springboard, March 2015

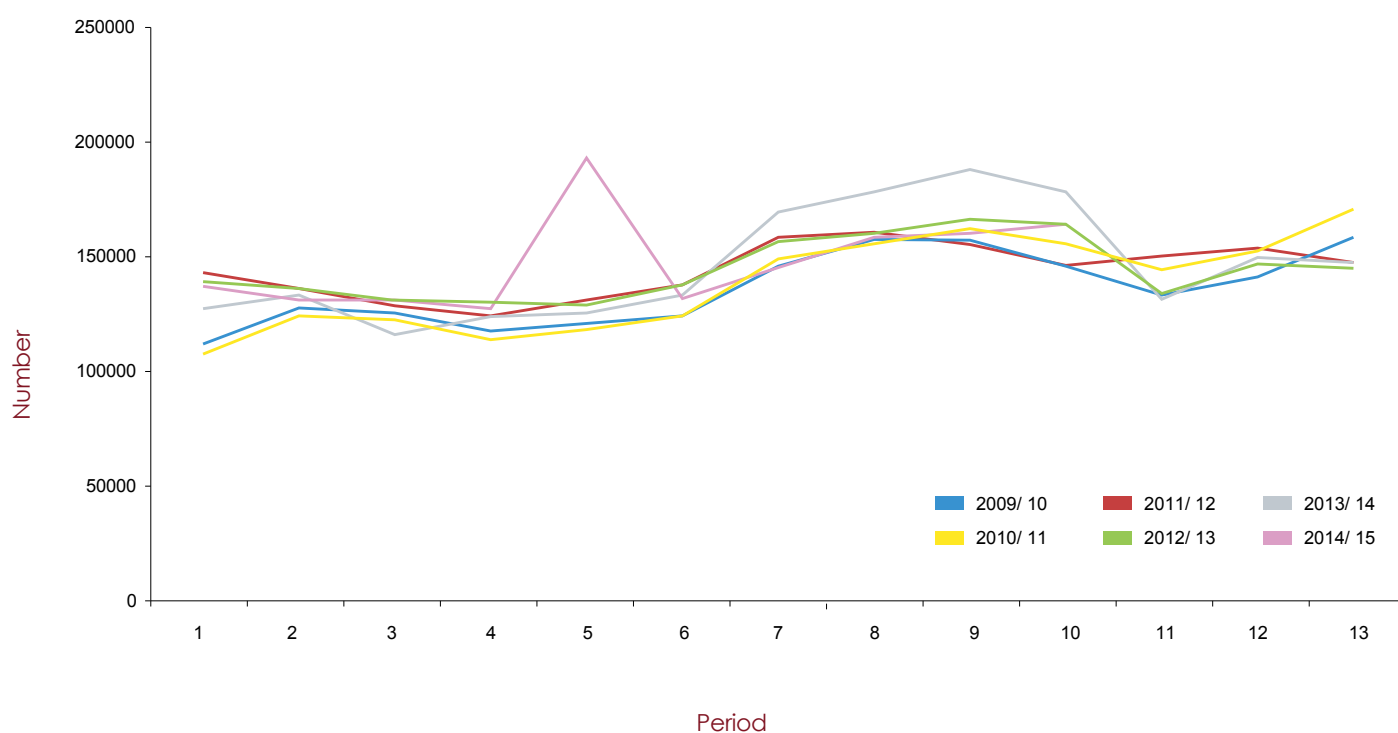
## 1.2 SPT Footfall

### Subway Footfall

SPT have thirteen reporting periods in which they collate Subway footfall data based on numbers boarding (going through the barrier). From 2012/13 figures have been aligned to a set of 4-weekly traffic return dates whereas previous years reported on a 13 period basis along financial accounting periods. For example, period 1 for 2014/15 in the graph below represents the 4 weekly period ending 19 April 2014.

**Table 1f<sup>11</sup>** shows the footfall recorded for each reporting period from 2009/10 onwards. This edition of the Healthcheck looks at data collected over reporting periods 4 to 10 in 2014/15. The graph clearly shows greater-than-normal usage numbers for reporting period 5 due to the occurrence of the Commonwealth Games. Despite this 'spike', total footfall recorded over reporting periods 4 to 10 in 2014/15 fell by **1.58%** at St Enoch Subway station when compared against the same periods in 2013/14. However please note that St Enoch Subway station was, for a considerable part of the reported periods noted above, subject to a refurbishment programme which might have given a slight variation in the footfall figures there being down compared with the footfall figures for Buchanan Street Subway station which displayed an increase over the same reporting periods.

**Table 1f St Enoch Subway Footfall**

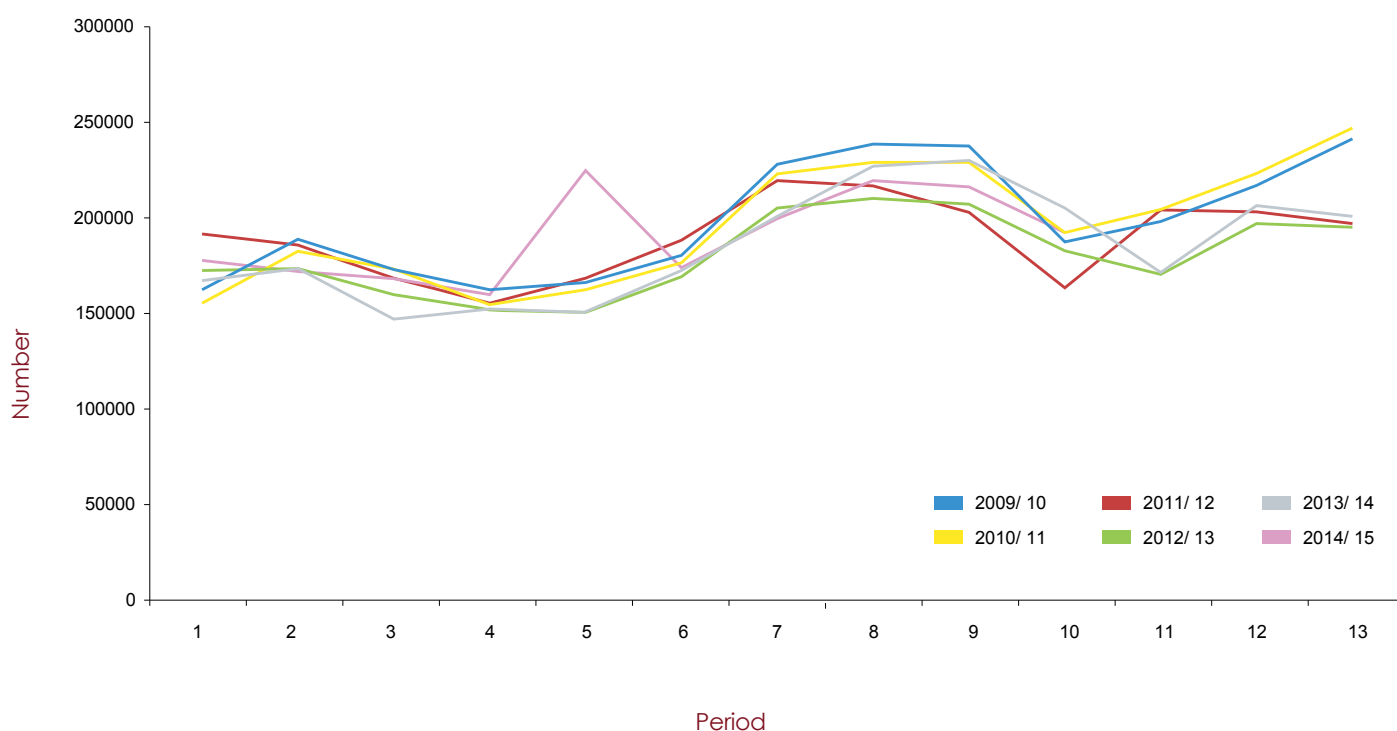


<sup>11</sup> SPT, March 2015



**Table 1g<sup>12</sup>** shows that Buchanan Street Subway station records a higher footfall than St Enoch Subway station. This edition of the Healthcheck looks at data collected over reporting periods 4 to 10 in 2014/15. Again, as above in Table 1f, the graph in Table 1g below clearly shows greater-than-normal usage numbers for reporting period 5 due to the occurrence of the Commonwealth Games. Total footfall recorded over reporting periods 4 to 10 in 2014/15 increased by **3.50%** at Buchanan Street Subway station when compared against the same periods in 2013/14.

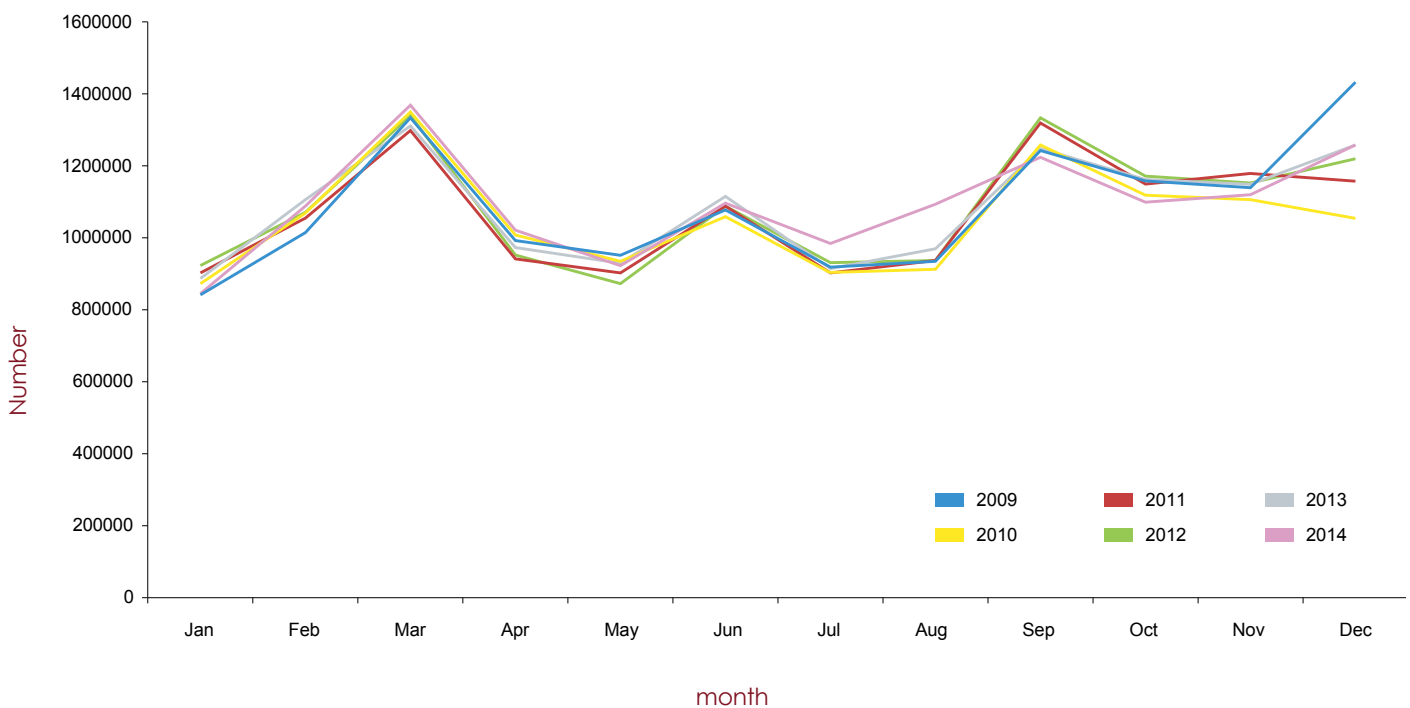
**Table 1g Buchanan Street Subway Footfall**



## Bus Station Footfall

**Table 1h<sup>13</sup>** illustrates the footfall at Buchanan Bus Station. Total footfall recorded at this location between **July and December 2014** showed an increase of **1.10%** against the figures recorded for the same periods in 2013. Total footfall recorded at **Buchanan Bus Station** over the whole of 2014 showed an increase of **0.74%** when compared against the figures recorded through all of 2013. The Commonwealth Games would have contributed to the increase in footfall in July and August 2014.

**Table 1h Buchanan Bus Station Footfall**

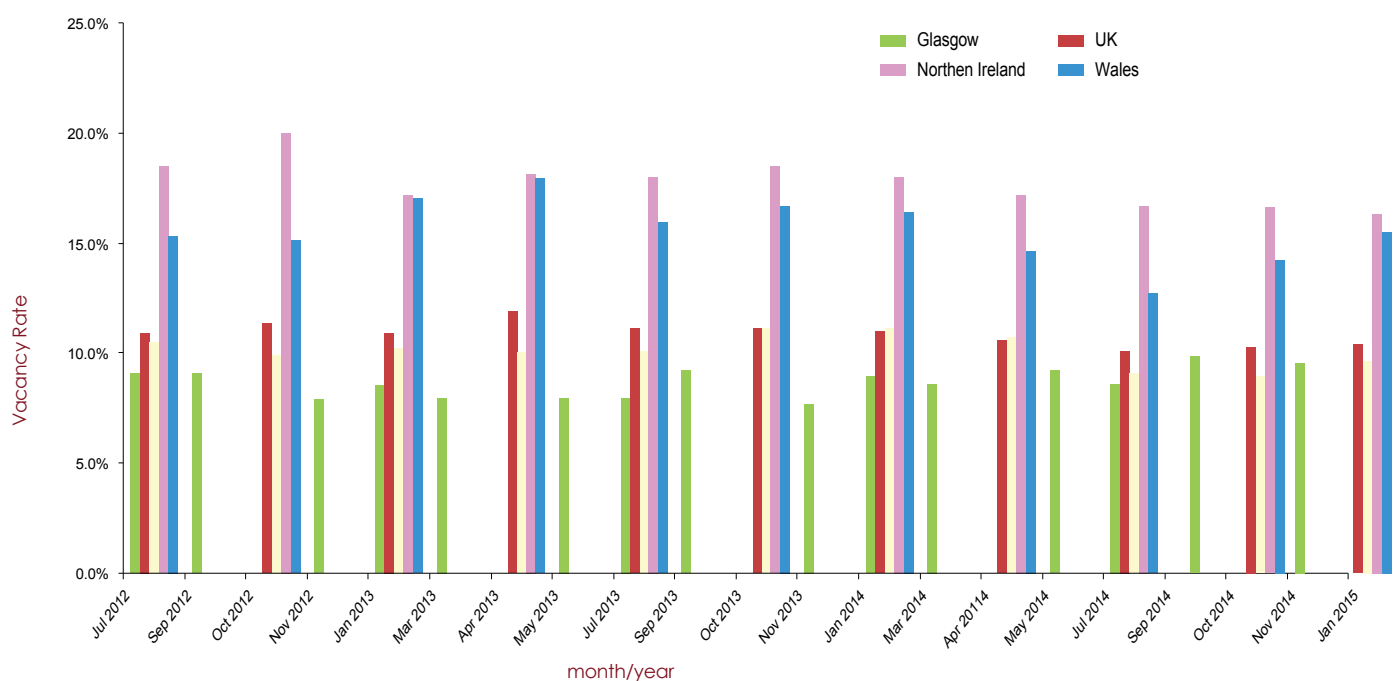


## 2. VACANT SITES (STYLE MILE)

**Table 2a<sup>14</sup>** illustrates the city centre's ground floor vacant unit trend since July 2012 and compares this data against the same figures recorded for other UK comparators<sup>15</sup>. In general, the Glasgow report is updated every second month whilst the UK data is reported every quarter. The Glasgow data is a record of the number of vacant units at street level and includes Class 1 (shops), Class 2 (financial, professional and other services – e.g. banks, Class 3 (food and drink – e.g. cafes and restaurants) and Sui Generis (not in any “use class” e.g. pub or hot food takeaways). It does not include vacant units within shopping centres. The UK data is gathered in towns and cities via an online survey of online managers in 450 locations throughout the UK. The vacancy rate is defined as the percentage of the ground floor units in the town centre that are vacant, and a vacant unit is regarded as one which is not trading at the time of the survey (whether or not it is let).

Since the beginning of 2012 the percentage of vacant units has remained relatively stable. The average annual percentage of vacant units for the period of January 2014 to November 2014 is currently **9.1%**. The average annual percentage of vacant units for the same comparison period in 2013 was **8.2%**. While this represents a slight year on year increase, the Glasgow city centre rate is still, and has been consistently, lower than the other UK comparator rates.

**Table 2a** Style Mile Ground Floor Vacancy Rates



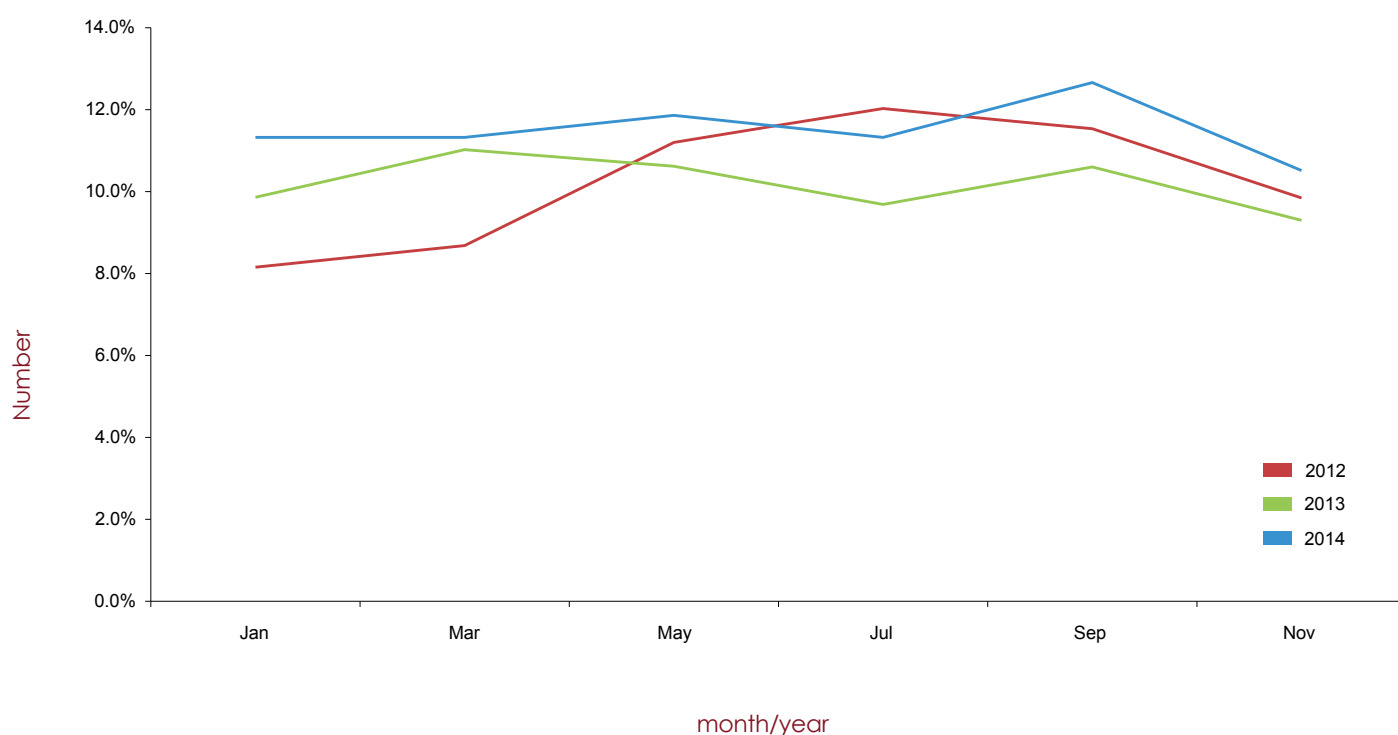
<sup>14</sup> GCC March 2015

<sup>15</sup> BRC/Springboard Footfall and Vacancies Monitor March 2015



**Table 2b<sup>16</sup>** shows vacancy rates for the Style Mile including shopping centres from January 2012 - November 2013. This shows a higher vacancy level to that of ground floor only vacancy rates in the Style Mile. The average annual percentage of vacant units in this category for 2013 was **10.2%**. The year-to-date average for 2014 is **11.5%**.

**Table 2b** Style Mile Vacancy Rates including shopping centres



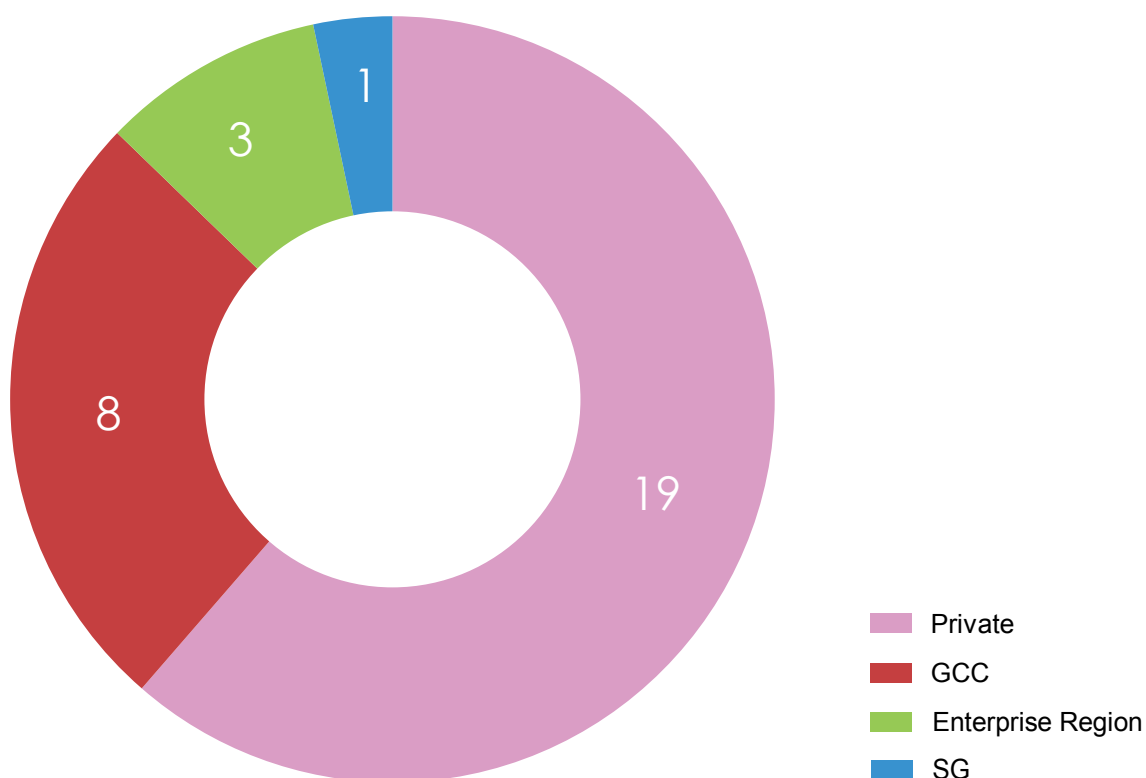
<sup>16</sup> GCC March 2015

### 3. VACANT SITES (CITY CENTRE)

**Table 3a<sup>17</sup>** provides details of vacant and derelict sites within Glasgow city centre. The pie-chart represents 10.32ha of vacant and derelict land across 31 sites within the city centre area bounded by the M8, High Street and the River Clyde.

As indicated, the majority of sites are privately owned. Their potential land use is varied from residential to office, retail, civic and mixed use. The majority of sites appear to have had planning consents granted or are in the process of undertaking pre-application work. A number of sites have a temporary use, predominantly car parking, and various others have been temporarily landscaped. Development on these sites can be slow because of the nature, scale and complexity of vacant sites, as well as the impact of the global economic environment.

**Table 3a** Vacant sites within the City Centre



<sup>17</sup> GCC March 2015

#### 4. CAR PARKING

---

Please note that the data comprising the number of daily entries for each city centre car park operated by City Parking (Glasgow) LLP is no longer available for the purposes of this document. As a result, no updates to previous graphs (Table 4a) can be provided and this element will no longer feature in future editions of the City Centre Economic Healthcheck





## 5. ENVIRONMENTAL INDICATORS AND CITY CENTRE INFORMATION

### 5.1 Street Cleanliness

Clean Glasgow was launched by Glasgow City Council in February 2007, and this body commissioned independent street cleanliness surveys of the city centre which have been undertaken by the national environment agency, Keep Scotland Beautiful (KSB). Whilst the annual city centre survey was not repeated in November 2013, the City Centre Regeneration team commissioned a renewal of this report for November 2014 with a view to maintaining this process going forward.

The area surveyed consists of approximately 166 street sites (transects) and the survey reflects the standard of cleanliness of these areas, achieved at the time of the survey and assessed in accordance with the Environmental Protection Act 1990 and its attendant Code of Practice on Litter and Refuse (Scotland) 2006. Criteria assessed include the general standard of cleanliness, sources of litter, types of litter, and adverse environmental quality indicators. Each transect is graded (from A to D) with each grade worth a requisite number of points. The overall city centre Cleanliness Index (CI) is then a reflection of the total points scored as a percentage of the total possible points available.

The CI score for 2014 was 64. However, it should also be noted that the KSB audit found that 93% of all transects surveyed were found to be of an acceptable standard (i.e. Grade A, B or B+).

The overall CI scores for the city centre surveys undertaken to date are as follow:



As part of the independent surveys they conduct, KSB also report on various aspects of street cleanliness including Adverse Environmental Quality Indicators (AEQIs) i.e. common issues affecting the local environment within communities. This data has been collated in Table 5a below.

**Table 5a**

	Mar 2007	Sep 2007	Nov 2008	Nov 2009	Nov 2010	Nov 2011	Nov 2012	Nov 2014
Dog Fouling	2	2	2	1	1	1	4	1
Graffiti	23	21	10	13	16	17	15	4
Vandalism	0	1	1	0	1	0	0	0
Weeds	4	11	0	9	5	5	2	4
Detritus	16	8	11	12	10	12	9	7
Gum	43	28	31	66	57	16	46	32
Fly-posting	4	2	4	5	7	2	4	1
Fly-tipping	1	1	1	2	1	1	1	1

The Keep Scotland Beautiful annual survey results for Glasgow city-wide cleanliness are shown in Table 5b as below. Please note that the methodology involved in the surveys for the year 2014/15 has changed. As a result of this the results have still to be confirmed.

**Table 5b**

Year	April	June	August (Other LA)	October	December	KSB Validation	February	Score
2010/11	70	70	67	71	74	68	72	69
2011/12	70	71	75	72	73	68	76	70
2012/ 13	72	72	76	71	78	58	72	72
2013/14	74	69	73	81	73	63	83	74

## 5.2 Key Performance Indicators (KPIs)

Community Safety Glasgow monitors various quarterly performance indicators relating to crime and antisocial behaviour<sup>19</sup>. Below is a sample of these indicators relevant to the city centre from January 2013 to December 2014. From April 2012 the data has been collected by local authority ward rather than a larger area that had previously incorporated Partick West and Hillhead.

Ward 10 (Anderston/City)	Jan-Mar 2013	Apr-Jun 2013	Jul-Sep 2013	Oct-Dec 2013	Jan-Mar 2014	Apr-Jun 2014	Jul-Sep 2014	Oct-Dec 2014
Square meterage of graffiti removed	<b>4303</b>	<b>5241</b>	<b>5690</b>	<b>5630</b>	<b>5167</b>	<b>7090</b>	<b>5908</b>	<b>3917</b>
Square meterage of flyposting removed	<b>11</b>	<b>91</b>	<b>30</b>	<b>346</b>	<b>1826</b>	<b>702</b>	<b>582</b>	<b>617</b>
Fixed penalty notices issued (includes fly-tipping, dog fouling, litter, cigarette litter and chewing gum)	<b>2637</b>	<b>4112</b>	<b>4169</b>	<b>3198</b>	<b>3643</b>	<b>3987</b>	<b>3841</b>	<b>2894</b>
Number of school, community and business clean-ups undertaken	<b>12</b>	<b>25</b>	<b>27</b>	<b>30</b>	<b>20</b>	<b>16</b>	<b>65</b>	<b>56</b>
Number of volunteers actively engaged with CSG through NIES <sup>20</sup>	<b>33</b>	<b>462</b>	<b>96</b>	<b>256</b>	<b>76</b>	<b>87</b>	<b>354</b>	<b>174</b>

## 5.3 Crime and antisocial behaviour

Due to operational changes within Police Scotland, the data normally supplied for **Table 5c** (i.e. data on crime, incidents and antisocial behaviour (ASB) for the period covered by this Healthcheck and the same 6-month period last year) is unavailable for this edition of the Healthcheck document.

<sup>19</sup> CSG, March 2015

<sup>20</sup> Neighbourhood Improvement and Enforcement Service

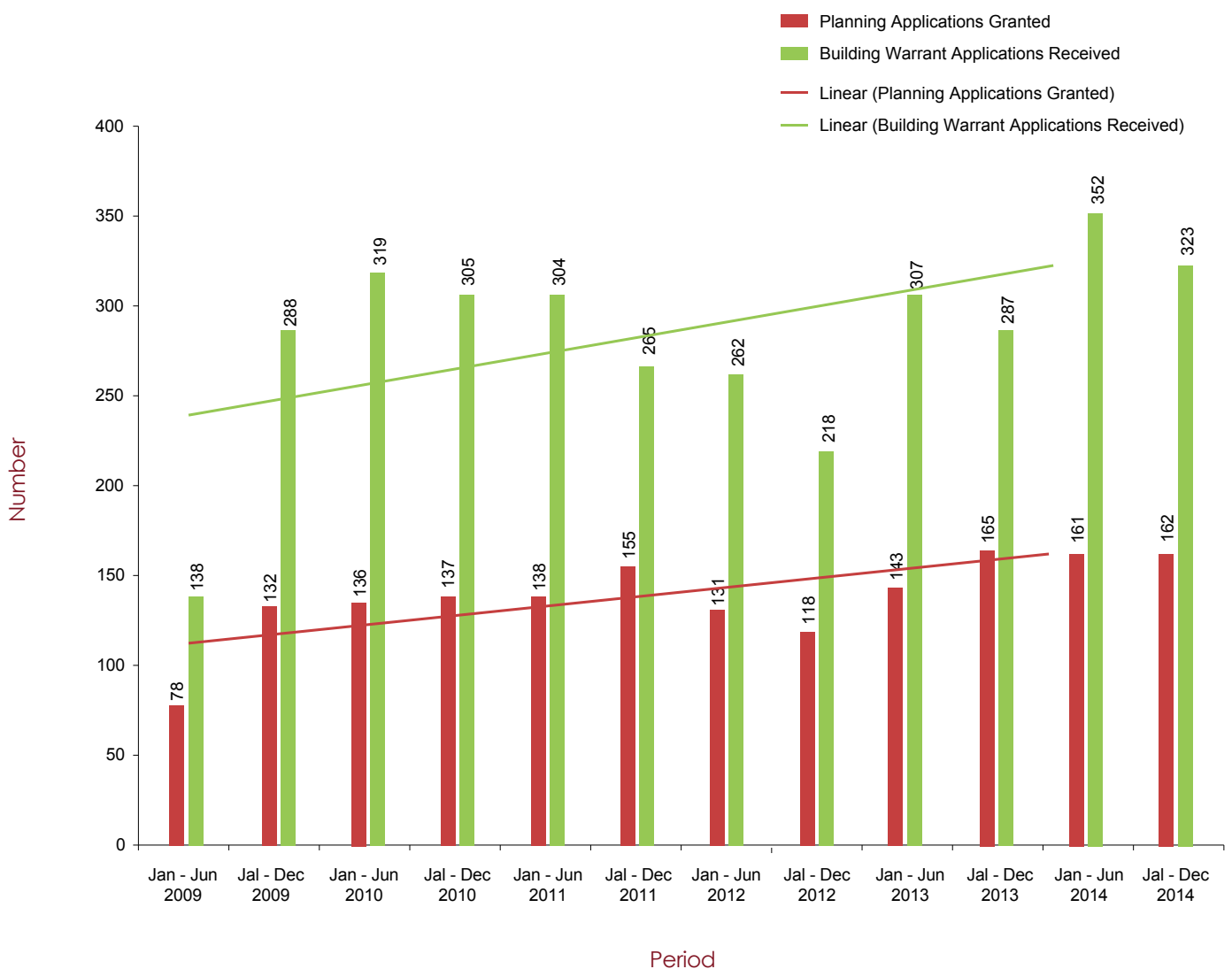


## 6. PLANNING AND DEVELOPMENT

### 6.1 Planning Applications and Building Warrant Applications

**Table 6a<sup>21</sup>** provides a comparison of both planning applications granted and building warrant applications received on Ward 10 Anderston/City centre basis against the periods January to June and July to December for years 2009 to 2014. The number of planning applications granted for period July to December 2014 showed a slight fall of -2% against the same period in 2013. The number of building warrant applications received for period January to June 2014 has increased by 13% against the same period in 2013. Overall, applications continue to show upward trends with total numbers for 2014 at their highest levels since these reports began.

**Table 6a** Planning and Building Warrant Applications

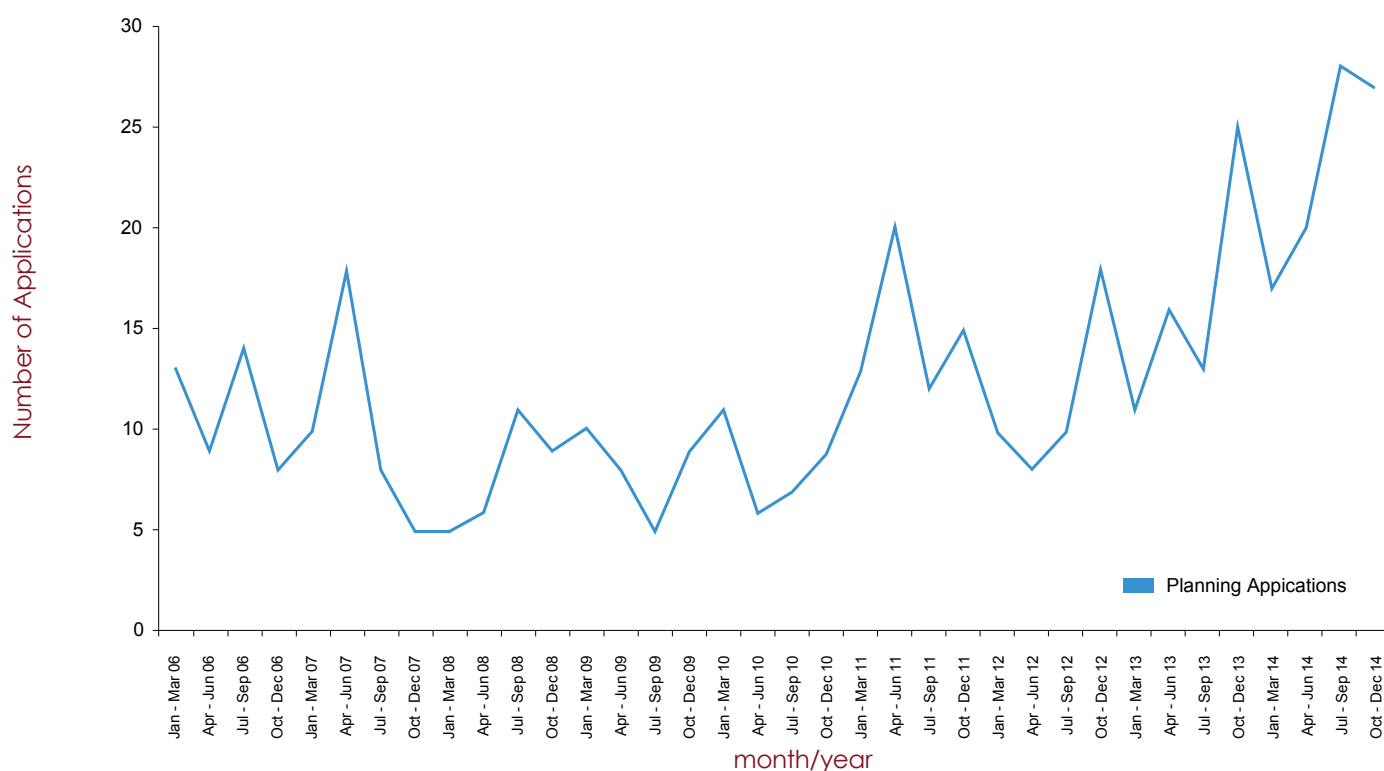


<sup>21</sup> GCC March 2015

## 6.2 City Centre Retail Planning Applications

**Table 6b**<sup>22</sup> tracks the quarterly numbers of retail planning applications approved since January 2006 to December 2014 using monthly data collated by GCC. There are no apparent annual trends shown by the graph, however, the total number of retail applications for the first half of 2014 were the highest since these records began, and this increase has continued for the remainder of the year. The figure recorded for the second half of 2014 is **44.7%** greater than that recorded for the same period in 2013. The figure recorded over the whole of 2014 is **41.5%** greater than that recorded over the whole of 2013.

**Table 6b** City Centre: Retail Planning Applications 2006 - 2014



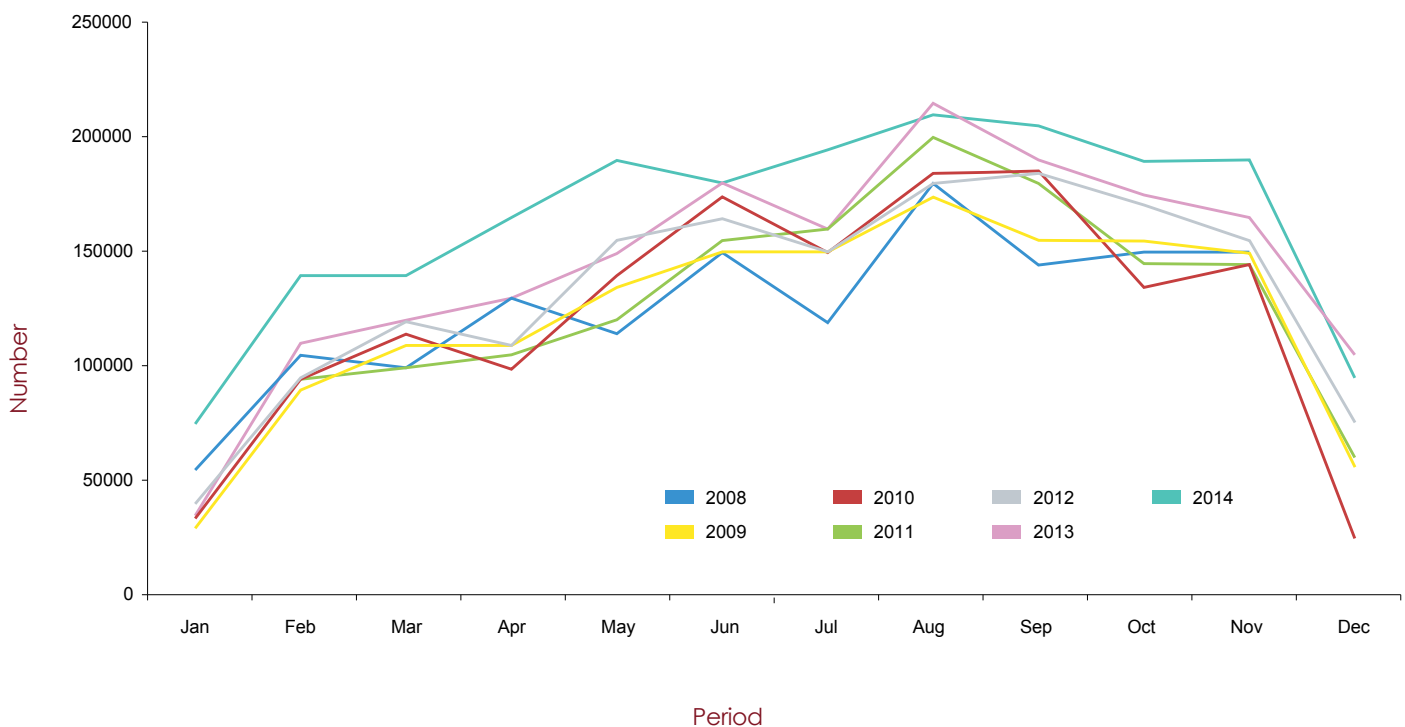
## 7. TOURISM

### 7.1 Glasgow Hotel Occupancy Rates

The data recorded for hotel occupancy rates is based on 22 city centre hotels.

**Table 7a<sup>23</sup>** illustrates the hotel occupancy rates from 2008 to 2014. The data clearly shows that 2014 outperformed all other previous years.

**Table 7a** Glasgow Hotel Occupancy Rates



**Table 7b<sup>24</sup>** illustrates the average hotel occupancy rates for previous years. The average hotel occupancy rate for 2014 was recorded at **82.9%** - this is the highest rate yet recorded and is significantly greater than the previous high of 78.9% for 2013.

**Table 7b** Yearly Average Hotel Occupancy Rates (%)

2000	2001	2002	2003	2004	2005	2006	2007	2008	2009	2010	2011	2012	2013	2014
65.7	65.5	66.0	68.4	70.8	71.5	74.3	77.4	74.3	74.4	74.4	75.1	77.4	78.9	82.9

<sup>23</sup> GGHA City of Glasgow Forecaster – Zone A (provided by GCMB March 2015)

<sup>24</sup> Ibid

## 7.2 Tourist Surveys

Around 400 people are surveyed per quarter by Lynn Jones Forecasting using the Visitract online survey system. E-mail addresses are taken from visitors who are then sent an online questionnaire. These addresses are captured from various locations throughout the city, though tend to be around the city centre and west end due to the majority of visitor attractions being located in these areas – therefore results are not city centre only.

A score of less than 8 suggests that improvements should be made.

The average results/per period comparison table is shown below.

Rating	01/01/12 - 30/06/12	01/07/12 - 31/12/12	01/01/13 - 30/06/13	01/07/13 - 31/12/13	01/01/14 - 30/06/14	01/07/14 - 31/12/14
No. of nights	<b>2.55</b>	<b>2.58</b>	<b>2.57</b>	<b>2.80</b>	<b>2.61</b>	<b>2.73</b>
Customer service in visitor attractions	<b>8.51</b>	<b>8.57</b>	<b>8.59</b>	<b>8.72</b>	<b>8.74</b>	<b>8.77</b>
Customer service in restaurants/ cafes	<b>8.27</b>	<b>8.33</b>	<b>8.34</b>	<b>8.50</b>	<b>8.53</b>	<b>8.48</b>
Customer service in pubs	<b>8.08</b>	<b>8.29</b>	<b>8.12</b>	<b>8.31</b>	<b>8.39</b>	<b>8.36</b>
Customer service in Visitor Info Centre	<b>8.15</b>	<b>8.48</b>	<b>8.32</b>	<b>8.46</b>	<b>8.53</b>	<b>8.69</b>
Customer service in shops	<b>8.14</b>	<b>8.38</b>	<b>8.29</b>	<b>8.37</b>	<b>8.39</b>	<b>8.49</b>
Customer service in transport	<b>8.16</b>	<b>8.36</b>	<b>8.26</b>	<b>8.33</b>	<b>8.31</b>	<b>8.54</b>
Customer service in accommodation	<b>8.33</b>	<b>8.33</b>	<b>8.46</b>	<b>8.49</b>	<b>8.54</b>	<b>8.49</b>
Cleanliness	<b>7.40</b>	<b>7.74</b>	<b>7.57</b>	<b>7.73</b>	<b>7.71</b>	<b>7.65</b>
Safety	<b>7.40</b>	<b>7.74</b>	<b>7.57</b>	<b>7.73</b>	<b>7.71</b>	<b>8.01</b>
Value for money	<b>7.54</b>	<b>7.68</b>	<b>7.65</b>	<b>7.77</b>	<b>7.72</b>	<b>7.79</b>
<b>Glasgow overall</b>	<b>8.23</b>	<b>8.31</b>	<b>8.33</b>	<b>8.44</b>	<b>8.46</b>	<b>8.58</b>

### 7.3 Glasgow International Airport: Passenger Numbers

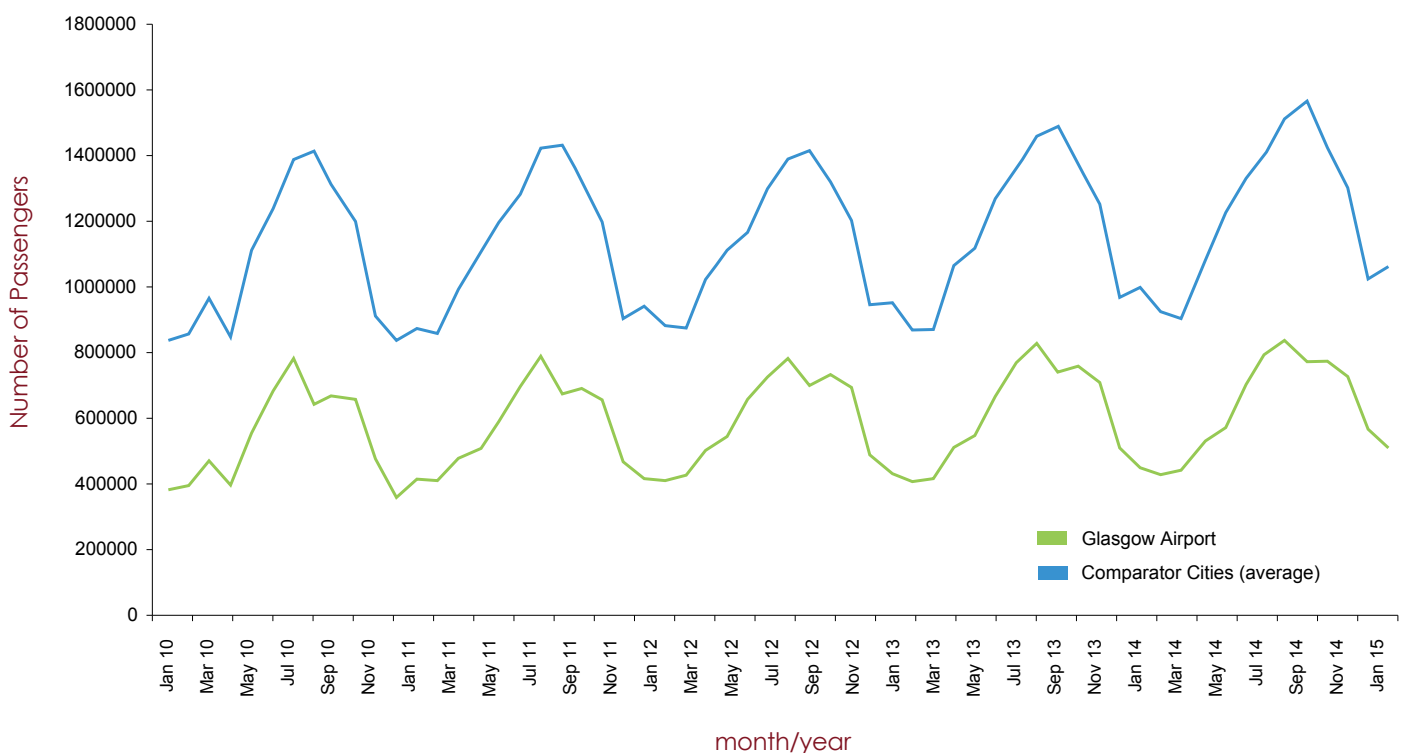
Glasgow International Airport operates 365 days a year, 24 hours a day and deals with approximately 7.4 million passengers a year, generating almost £200 million annually to the economy<sup>25</sup>. Further snapshot facts and figures on the airport can be accessed via the following link:

[www.glasgowairport.com/about-us/facts-and-figures](http://www.glasgowairport.com/about-us/facts-and-figures)

**Table 7c<sup>26</sup>** illustrates Glasgow Airport's total passenger numbers and how they compare to an average taken of other cities<sup>27</sup>. The figures cover the period January 2010 – December 2014 and relate to the number of terminal passengers recorded by the Civil Aviation Authority. Glasgow Airport and its comparators tend to demonstrate the same yearly trends.

Comparing the second half of 2014 against the second half of 2013, Glasgow Airport demonstrated a **5.12%** increase in average monthly passenger numbers. An overall comparison of 2014 against 2013 reveals a **4.78%** increase in average monthly passenger numbers. In the same year on year comparisons, UK comparator cities showed an increase of **4.80%** and **4.57%** in average monthly passenger numbers, respectively.

**Table 7c** Glasgow Airport Terminal Passenger Numbers



<sup>25</sup> Glasgow Airport website accessed March 2015

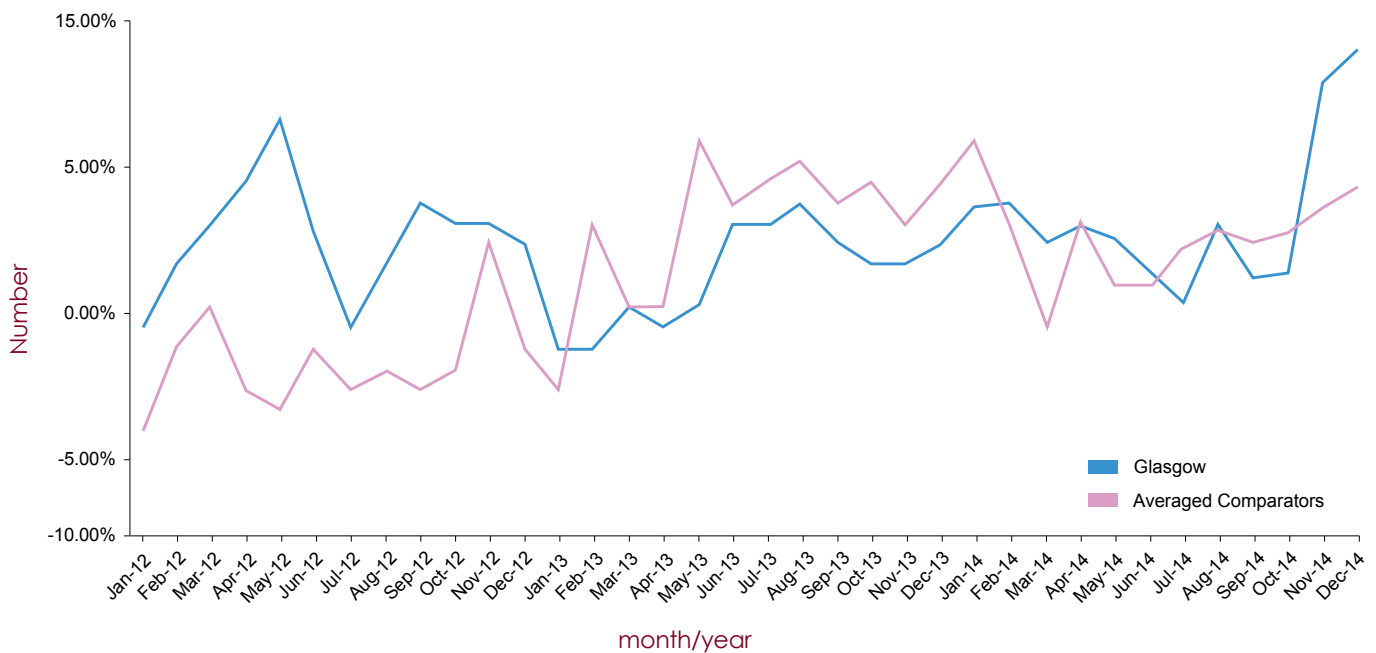
<sup>26</sup> CAA website accessed March 2015

<sup>27</sup> Birmingham, Bristol, Cardiff, Edinburgh, Gatwick, Heathrow, Leeds, Liverpool, London City, London Luton, Manchester, Newcastle, Norwich and Stansted



**Table 7d<sup>28</sup>** shows the annual percentage rate changes for Glasgow against the average annual percentage rate changes of the comparator cities. The graph shows that Glasgow performed better than the average of the comparator cities during the second half of 2014 (**6.07%** against **4.95%**). This increased performance is also reflected in a comparison against Glasgow's figures for the same period in 2013 (**6.07%** against **4.17%**).

**Table 7d Annual Change In Airport Passenger Numbers**





## 8. GLASGOW NEWS ROUND-UP

---

### **Midge Ure to perform with live orchestra at Ryder Cup concert** 29th August 2014

<http://www.eveningtimes.co.uk/entertainment/music/midge-ure-to-perform-hit-vienna-with-live-orchestra-at-ryder-cup-concert.1409305127>

### **People make city top spot** - 3rd September 2014

<http://www.eveningtimes.co.uk/news/people-make-city-top-spot-178837n.25221089>

### **Plans for £100m Merchant City development** - 5th September 2015

<http://news.stv.tv/west-central/291040-plans-for-100m-merchant-city-development-go-on-public-display/>

### **Glasgow Club membership fees frozen for FOUR years** - 6th September 2014

<http://www.eveningtimes.co.uk/news/glasgow-club-membership-fees-frozen-for-four-years-179320n.25218657>

### **Glasgow City Council donates Games mascot Clyde to children's charity** - 9th September 2014

<http://www.eveningtimes.co.uk/news/u/glasgow-city-council-donate-games-mascot-clyde-to-childrens-charity.1410254932>

### **40,000 use free wi-fi in city centre** - 11th September 2014

<http://www.eveningtimes.co.uk/news/40000-use-free-wi-fi-in-city-centre-180009n.25291316>

### **Golf's Ryder Cup on show in Glasgow** - 11th September 2014

<http://www.eveningtimes.co.uk/news/golfs-ryder-cup-is-on-show-in-glasgow-180011n.25291361>

### **Airport numbers soar as world visits Glasgow** - 12th September 2014

<http://www.eveningtimes.co.uk/news/airport-numbers-soar-as-world-visits-glasgow-180128n.25295004>

### **St Enoch is set for big make-over** - 13th September 2014

<http://www.eveningtimes.co.uk/news/st-enoch-is-set-for-big-make-over-180277n.25287438>

### **Christmas lights ballot opens** - 16th September 2014

<http://www.eveningtimes.co.uk/news/christmas-lights-ballot-opens-180656n.25336854>

### **City centre building of the future starts coming to life** - 16th September 2014

<http://www.eveningtimes.co.uk/news/city-centre-building-of-the-future-starts-coming-to-life-180424n.25306907>

### **Fergie backs Hampden Euro bid** - 17th September 2014

---



<http://www.eveningtimes.co.uk/news/fergie-backs-hampden-euro-bid-180888n.25351029>

**Clyde statue given to Yorkhill hospital - 19th September 2014**

<http://www.scotsman.com/news/scotland/top-stories/2014-clyde-statue-given-to-yorkhill-hospital-1-3546470>

**£200m development at BAE Systems in Glasgow - 19th September 2014**

<http://www.dailyrecord.co.uk/news/scottish-news/plans-200million-development-bae-systems-4289459>

**Brakes put on Glasgow's boy racers - 23rd September 2014**

<http://www.eveningtimes.co.uk/news/brakes-put-on-glasgows-boy-racers-181619n.25404193>

**City is world's friendliest, says top guide - 23rd September 2014**

<http://www.eveningtimes.co.uk/news/city-is-worlds-friendliest-says-top-guide-181640n.25404402>

**Glasgow leader looking ahead to powers - 24th September 2014**

<http://www.heraldsotland.com/politics/referendum-news/glasgow-leader-looking-ahead-to-powers.25407741#>

**£250m vision for Sighthill wasteland- 24th September 2014**

<http://www.eveningtimes.co.uk/news/250m-revamp-for-city-scheme-is-go-181780n.25413232>

**City thinks smart with £24m drive - 26th September 2014**

<http://www.eveningtimes.co.uk/news/city-thinks-smart-with-24m-drive-182103n.25430218>

**£11m investment to bring more than 200 new jobs to Glasgow - 27th September 2014**

<http://news.stv.tv/west-central/293699-11m-investment-to-bring-more-than-200-new-jobs-to-glasgow/>

**BAM lodges plans for £100m Glasgow office development - 30th September 2014**

[http://www.theconstructionindex.co.uk/assets/news\\_articles/2014/09/1411719235\\_bam-im.jpg](http://www.theconstructionindex.co.uk/assets/news_articles/2014/09/1411719235_bam-im.jpg)

**'Mega month' sees Glasgow hotel report soaring occupancy rates - 2nd October 2014**

<http://www.heraldsotland.com/news/home-news/mega-month-sees-glasgow-hotels-report-soaring-occupancy-rates.25463324>

**£3bn building bonanza as city celebrates investment - 3rd October 2014**

<http://www.eveningtimes.co.uk/news/3bn-building-bonanza-as-city-celebrates-investment-182911n.25466947>

---

**Great Scottish Run 3,000 young runner race through Super Saturday - 6th October 2014**

<http://www.dailyrecord.co.uk/news/scottish-news/great-scottish-run-3000-young-4377408>

**Thousands join Great Scottish Run in Glasgow - 8th October 2014**

<http://www.bbc.co.uk/news/uk-scotland-glasgow-west-29496650>

**Conference will examine impact of digital revolution on city - 8th October 2014**

<http://www.heraldscotland.com/business/markets-economy/conference-will-examine-impact-of-digital-revolution-on-city.1412765534>

**Style Mile is up for best high street award - 8th October 2014**

<http://www.eveningtimes.co.uk/news/style-mile-is-up-for-best-high-street-award-183551n.25526440>

**Tickets for MTV EMA Glasgow bash go on sale via public ballot - 8th October 2014**

<http://www.dailyrecord.co.uk/whats-on/music-nightlife-news/tickets-mtv-ema-glasgow-bash-4400643>

**Nelson Mandela bust to mark city's role in long walk to freedom - 10th October 2014**

<http://www.eveningtimes.co.uk/news/mandela-bust-to-mark-citys-role-in-long-walk-to-freedom-183617n.25534927>

**Another gold for Glasgow as Games food voted best ever - 15th October 2014**

<http://www.heraldscotland.com/news/home-news/another-gold-for-glasgow-as-games-food-voted-best-ever.25596316>

**Celtic Connections 2015 festival line up - 15th October 2014**

<http://glasgow.stv.tv/articles/295708-celtic-connections-2015-festival-line-up-with-king-creosote-revealed/>

**Conference coup for city - 15th October 2014**

<http://www.eveningtimes.co.uk/news/conference-coup-for-city-184508n.25594125>

**Demand for office space in Glasgow increases - 16th October 2014**

<http://www.deadlinenews.co.uk/2014/10/15/glasgows-commercial-property-market-sees-sharp-growth/feed/>

**Glasgow and Aberdeen airports sold to consortium - 17th October 2014**

<http://www.dailyrecord.co.uk/business/business-news/glasgow-aberdeen-airports-sold-consortium-4449521>

---

**Office space take-up leaps as supply lags - 17th October 2014**

<http://www.heraldscotland.com/business/company-news/office-space-take-up-leaps-as-supply-lags.25607213>

**7N Architects reveal Glasgow Masterplan - 19th October 2014**

<http://www.archdaily.com/558800/7n-architects-reveal-glasgow-masterplan/feed/>

**Massive demand for George Square Christmas lights event - 19th October 2014**

<http://glasgow.stv.tv/172727/>

**Expert says homes will put heart back into city - 21st October 2014**

<http://www.eveningtimes.co.uk/news/expert-says-homes-will-put-heart-back-into-city-185305n.25648481>

**Games venues see city team win major award - 21st October 2014**

<http://www.eveningtimes.co.uk/news/games-venues-see-city-team-win-major-award-185210n.25644459>

**Glasgow Loves Christmas - 22nd October 2014**

<http://www.eveningtimes.co.uk/news/u/glasgow-love-christmas-mathieson-reindeer-and-a-sleigh-help-launch-citys-love-affair-with-fes.1413902141>

**MTV looking for 2000 Scots music fans to be part of 2014 EMA - 22nd October 2014**

<http://www.scotlandnow.dailyrecord.co.uk/lifestyle/mtv-looking-2000-scots-music-4475084>

**There's a giant snow leopard in Springburn park - 22nd October 2014**

<http://glasgow.stv.tv/174023/>

**Riverside Campus is sure to make big splash in city - 25th October 2014**

<http://www.eveningtimes.co.uk/news/riverside-campus-is-sure-to-make-big-splash-in-city-185930n.25679428>

**Boxer Charlie Flynn unveils bike stand which is legacy of Games - 29th October 2014**

<http://www.eveningtimes.co.uk/news/bike-stand-is-legacy-of-games-186335n.25711890>

**Glasgow records a huge spike in cycling commuters - 29th October 2014**

<http://www.cyclingweekly.co.uk/news/latest-news/glasgow-records-huge-spike-commuter-cycling-141697>

**Royal Marines to be given the Freedom of Glasgow - 29th October 2014**

<http://www.eveningtimes.co.uk/news/royal-marines-to-be-given-the-freedom-of-glasgow-186393n.25722265>

---



**Charities benefit from Glasgow 2014 legacy - 30th October 2014**

<http://www.heraldscotland.com/news/home-news/charities-benefit-from-glasgow-2014-legacy.25730363>

**Glasgow's City Chamber to be lit up with groundbreaking 3D light show - 30th October 2014**

<http://www.dailyrecord.co.uk/entertainment/celebrity/glasgows-city-chambers-lit-up-4538001>

**MTV EMAs will be hottest ticket in town - 31st October 2014**

<http://www.eveningtimes.co.uk/entertainment/music/mtv-emas-will-be-hottest-ticket-in-town-186604n.25722152>

**Music legend Frankie to get top city honour - 31st October 2014**

<http://www.eveningtimes.co.uk/news/music-legend-frankie-to-get-top-city-honour-186649n.25736958>

**Superheroes bring extra sparkle to city fireworks - 31st October 2014**

<http://www.eveningtimes.co.uk/news/superheroes-bring-extra-sparkle-to-city-fireworks-186665n.25738444>

**Commandos march through Glasgow as marines given key to city - 1st November 2014**

<http://news.stv.tv/west-central/297979-commandos-march-through-glasgow-as-marines-given-key-to-city/>

**Davis Cup Glasgow Arena set to host GB v USA tie in March - 3rd November 2014**

<http://www.bbc.co.uk/sport/0/tennis/29880836>

**Club MTV Warehouse Party in Glasgow - 4th November 2014**

<http://www.mtv.co.uk/pendulum/news/club-mtv-warehouse-party-in-glasgow>

**Glasgow 2014 Commonwealth set benchmark - 4th November 2014**

<http://news.stv.tv/west-central/298271-glasgow-2014-commonwealth-set-benchmark-for-delivering-sustainable-events/>

**Glasgow 2014 Queen's Baton to go on display - 4th November 2014**

<http://www.heraldscotland.com/news/home-news/glasgow-2014-queens-baton-to-go-on-display.1415195964>

**Work begins today on new St Enoch entrances - 4th November 2014**

<http://www.dailyrecord.co.uk/news/local-news/glasgow-subway-st-enoch-station-4559410>

---



**Glasgow Green fireworks show set to dazzle crowds - 5th November 2014**

<http://www.eveningtimes.co.uk/news/show-set-to-dazzle-crowds-187328n.25786603>

**Behind-the-scenes tours of Glasgow Central Station begin - 7th November 2014**

<http://www.bbc.co.uk/news/uk-scotland-29940875>

**Singer Labrinth lights up Glasgow George Square - 7th November 2014**

<http://www.dailyrecord.co.uk/entertainment/celebrity-interviews/singer-labrinth-lights-up-glasgows-4589379>

**Plan for specialist maths and science school in Glasgow - 8th November 2014**

<http://www.bbc.co.uk/news/uk-scotland-glasgow-west-29961751>

**Dandara's Glasgow Harbour development plans 348 apartments - 9th November 2014**

<http://glasgow.stv.tv/articles/298852-dandaras-glasgow-harbour-development-plans-348-apartments/>

**MTV EMAs A night Glasgow won't forget - 10th November 2014**

<http://www.bbc.co.uk/news/uk-scotland-29983255>

**Glasgow Airport to invest £3m in east pier for five new gates - 11th November 2014**

<http://news.stv.tv/west-central/299285-glasgow-airport-to-invest-3m-in-east-pier-for-five-new-gates/>

**Glasgow Central named Europe's station of the year - 12th November 2014**

<http://www.eveningtimes.co.uk/news/u/glasgow-central-named-europe-s-station-of-the-year.1415803594>

**Prestwick Airport in 'very good position' to become UK spaceport - 12th November 2014**

<http://news.stv.tv/west-central/299387-prestwick-airport-in-very-good-position-to-become-uk-spaceport/>

**Buchanan Galleries expansion plan - 13th November 2014**

<http://www.eveningtimes.co.uk/news/city-mall-bosses-submit-bid-for-400m-expansion-plan-188379n.25855645>

**Glasgow 2014 brings £282m tourism boost – 13th November 2014**

<http://glasgow.stv.tv/181522/>

---

**Glasgow's top of the shops for Christmas - 13th November 2014**

<http://www.eveningtimes.co.uk/news/glasgows-top-of-the-shops-for-christmas-188444n.25858198>

**Hospitality show ScotHot returning to Glasgow in 2015 - 13th November 2014**

<http://eatoutmagazine.co.uk/sites/all/modules/ad/serve.php?q=1&amp;t=1&u=node%2F34170&l=hospitality-show-scothot-returning-glasgow-2015>

**Mark Beaumont adds support to cycle safety while new app launched - 13th November 2014**

<http://news.stv.tv/west-central/299546-mark-beaumont-adds-support-to-cycle-safety-while-new-app-launched/>

**Christmas party is a real pick me up for Provost – 14th November 2014**

<http://www.eveningtimes.co.uk/news/christmas-party-is-a-real-pick-me-up-for-provost-188636n.25871822>

**Is Glasgow ready to demolish the Buchanan Street steps - 15th November 2014**

<http://www.heraldscotland.com/news/home-news/bid-received-to-demolish-citys-popular-buchanan-street-steps.25877337>

**Crowds flock to city's square to witness Christmas lights switch-on - 17th November 2014**

<http://www.heraldscotland.com/news/home-news/crowds-flock-to-citys-square-to-witness-christmas-lights-switch-on.25877867>

**Lego Duke of Wellington at Buchanan Galleries - 17th November 2014**

<http://glasgow.stv.tv/articles/299927-brickish-build-lego-duke-of-wellington-at-buchanan-galleries-store/>

**Top cop's vow as city robbery rate drops - 17th November 2014**

<http://www.eveningtimes.co.uk/news/top-cops-vow-as-city-robbery-rate-drops-188793n.25875803>

**New flats in pipeline for Glasgow Harbour - 18th November 2014**

<http://www.eveningtimes.co.uk/news/new-flats-in-pipeline-for-glasgow-harbour-188951n.25898565>

**Glasgow Fort sees a rise in shoppers - 19th November 2014**

<http://www.heraldscotland.com/business/company-news/glasgow-fort-sees-a-rise-in-shoppers.25906939>

---

**Is the east end getting a new park - 19th November 2014**

<http://www.eveningtimes.co.uk/news/watts-making-glasgow-so-green-in-2015-189109n.25904187>

**Barrowland Park and Album Pathway petition signed by thousands - 21st November 2014**

<http://glasgow.stv.tv/articles/300416-barrowland-park-and-album-pathway-petition-signed-by-thousands/>

**Future of Red Road flats is in spotlight as last residents leave - 24th November 2014**

<http://www.heraldscotland.com/news/home-news/future-of-red-road-flats-is-in-spotlight-as-last-residents-leave.25948001>

**Merchant City welcomes new boutique hotel - 24th November 2014**

<http://glasgow.stv.tv/185431/>

**Glasgow street most expensive outside London – 25th November 2014**

<http://www.heraldscotland.com/business/company-news/glasgow-street-most-expensive-outside-london.25956959>

**Top gymnasts set to close year at Glasgow World Cup - 25th November 2014**

<http://www.insidethegames.biz/sports/summer/gymnastics/1023941-top-gymnasts-set-to-close-year-at-glasgow-world-cup>

**Wheatley Group raises £250m from bond issues - 25th November 2014**

<http://www.dailyrecord.co.uk/business/business-news/wheatley-group-raises-250m-bond-4684456>

**Barrowland Park and Album Pathway wont be moved in 2015 - 27th November 2014**

<http://glasgow.stv.tv/articles/301160-glasgows-barrowland-park-and-album-pathway-wont-be-moved-in-2015/>

**More bus gates planned for Glasgow city centre - 27th November 2014**

<http://www.bbc.co.uk/news/uk-scotland-glasgow-west-30209515>

**Extra cops on streets for festive revellers - 29th November 2014**

<http://www.eveningtimes.co.uk/news/extra-cops-on-streets-for-festive-revellers-190502n.25990454>

**Live at Leeds expands to Glasgow in 2015 - 3rd December 2014**

<http://www.virtualfestivals.com/index.cfm?section=latest.news&id=15092>

---

**BBC Sports Personality of the Year 2014 Eddie Izzard to thank volunteers - 4th December 2014**

<http://www.bbc.co.uk/sport/0/get-inspired/30308820>

**Christmas crack down on abusive rail passengers - 4th December 2014**

<http://www.eveningtimes.co.uk/news/christmas-crackdown-on-abusive-rail-passengers-190834n.26012698>

**Drink driving clampdown a single drink will put you over the limit - 4th December 2014**

<http://www.eveningtimes.co.uk/news/a-single-drink-will-put-you-over-the-limit-190988n.26020912>

**Yorkhill celebrates last Christmas at historic Glasgow home - 5th December 2014**

<http://www.eveningtimes.co.uk/news/dance-stars-in-step-for-switch-on-191188n.26038684>

**Renaissance for McLellan Galleries in new Art School plan - 6th December 2014**

<http://www.heraldsotland.com/news/home-news/renaissance-for-mclellan-galleries-in-new-art-school-plan.114046260>

**More than 5000 Father Christmases don their running shoes for 2014 - 7th December 2014**

<http://www.dailyrecord.co.uk/news/scottish-news/pictures-more-5000-father-christmases-4763682>

**Glasgow City Council again leading the way - 9th December 2014**

<http://www.dailyrecord.co.uk/news/local-news/gordon-matheson-glasgow-city-council-4770923>

**Scheme cash boost helps with area's regeneration - 9th December 2014**

<http://www.eveningtimes.co.uk/news/u/scheme-cash-boost-helps-with-area-s-regeneration.1418120893>

**Festive safety scheme says get home safe - 10th December 2014**

<http://www.glasgowsouthandeastwoodextra.co.uk/news/local-headlines/festive-safety-scheme-says-get-home-safe-1-3630221>

**GSA to take over city McLellan Galleries - 11th November 2014**

<http://news.stv.tv/west-central/303132-glasgow-school-of-art-to-take-over-citys-mclellan-galleries/>

**Take first steps to healthy living with Great Run Local - 12th December 2014**

<http://www.eveningtimes.co.uk/lifestyle/active-2014/take-first-steps-to-healthy-living-with-great-local-run-191745n.114180697>

---

**Top actors back Glasgow for Scottish film studio - 12th December 2014**

<http://www.bbc.co.uk/news/uk-scotland-glasgow-west-30431044>

**Cream of sporting world set to descend on Glasgow for glitzy awards - 13th December 2014**

<http://www.heraldsotland.com/news/home-news/cream-of-sporting-world-set-to-descend-on-glasgow-for-glitzzy-awards.114462836>

**Hail Caledonia Sturgeon opens UK's biggest bus depot in Glasgow - 13th December 2014**

<http://www.heraldsotland.com/news/transport/hail-caledonia-sturgeon-opens-uks-biggest-bus-depot-in-glasgow.1418408776>

**Odeon cinema leisure centre plan - 15th December 2014**

<http://www.eveningtimes.co.uk/news/odeon-cinema-leisure-centre-plan-191928n.114466052>

**Sports Personality Lewis Hamilton takes top tile - 15th December 2014**

<http://www.heraldsotland.com/news/home-news/sports-personality-lewis-hamilton-takes-top-title-chris-hoy-wins-lifetime-achievement.1418599909>

**Thousands more Burrell exhibits to go on show - 15th December 2014**

<http://www.heraldsotland.com/news/home-news/thousands-more-burrell-exhibits-to-go-on-show-when-revamped-collection-opens-at-end-o.114509704>

**Glasgow launches festive online game for travellers - 17th December 2014**

<http://www.airport-world.com/news/general-news/4746-glasgow-launches-festive-online-game-for-travellers.html>

**Historic George Square Hotel plans skywards expansion - 17th December 2014**

<http://www.eveningtimes.co.uk/news/historic-george-square-hotel-plans-skywards-expansion-to-mask-proposed-192098n.114718013>

**Theatre Royal extension opens - 17th December 2014**

<http://www.eveningtimes.co.uk/news/theatre-royal-extension-opens-192117n.114698462>

**Youth film festival programme announced - 17th December 2014**

<http://www.eveningtimes.co.uk/news/youth-film-festival-programme-announced-192141n.114745123>

**Medical imaging centre in Glasgow awarded £16m funding - 18th December 2014**

<http://www.bbc.co.uk/news/uk-scotland-glasgow-west-30534574>

---



**Glasgow Gallowgate towers to be demolished - 18th December 2014**

<http://www.bbc.co.uk/news/uk-scotland-glasgow-west-30534574>

**Police crackdown cuts festive attacks by 40% - 19th December 2014**

<http://www.eveningtimes.co.uk/news/police-crackdown-cuts-festive-attacks-by-40-192318n.114854564>

**Hydro nets £130million for city in first year of business - 22nd December 2014**

<http://www.heraldscotland.com/news/home-news/hydro-nets-130million-for-city-in-first-year-of-business.114971054>

**Glasgow housing project up for urban award - 23rd December 2014**

<http://www.bqlive.co.uk/2014/12/23/glasgow-housing-project-up-for-urban-award/>

**George Square tragedy brought out the best in Glaswegians - 28th December 2014**

<http://www.theguardian.com/commentisfree/2014/dec/28/glasgow-george-square-tragedy-city-at-its-best>

**Glasgow University showcases campus extension plan - 5th January 2015**

<http://investglasgow.com/higher-further-education/glasgow-university-showcases-campus-extension-plan/>

**'Lost' Knox fair artwork to be displayed - 6th January 2015**

<http://www.heraldscotland.com/news/home-news/lost-knox-fair-artwork-to-be-displayed.1420559172>

**Rail link essential for Glasgow Airport's future plans - 6th January 2015**

<http://www.eveningtimes.co.uk/news/u/rail-link-essential-for-glasgow-airports-future-plans.1420528200>

**St Mungo Festival celebrates Glasgow's medieval religious roots - 6th January 2015**

<http://www.sconews.co.uk/news/42657/st-mungo-festival-celebrates-glasgows-medieval-religious-roots-with-civic-society-today/>

**Glasgow School of Art planning £10m expansion - 7th January 2015**

<http://news.stv.tv/west-central/305597-glasgow-school-of-art-planning-10m-expansion-into-highlands/>

**Glasgow Airport eyes further growth after busiest year since 2008 - 13th January 2015**

<http://www.heraldscotland.com/business/markets-economy/glasgow-airport-eyes-further-growth-after-busiest-year-since-2008-x.116037513>

---



**Glasgow's SSE Hydro is 'world's second busiest venue' - 13th January 2015**

<http://www.bbc.co.uk/news/uk-scotland-glasgow-west-30796463>

**Kelvingrove makes it into UK's Top 10 museums list - 13th January 2015**

<http://www.eveningtimes.co.uk/news/kelvingrove-hits-top-10-194106n.115982909>

**Major city devolution summit to be held in Glasgow - 13th January 2015**

<http://www.eveningtimes.co.uk/news/major-cities-devolution-summit-being-held-in-glasgow-196774n.117916282>

**City Deal board meets - 15th January 2015**

<http://www.eveningtimes.co.uk/news/major-cities-devolution-summit-being-held-in-glasgow-196774n.117916282>

**Glasgow Comedy festival set to loose laughs - 15th January 2015**

<http://www.scotsman.com/what-s-on/glasgow-comedy-festival-set-to-let-loose-laughs-1-3660318>

**Glasgow gardening and community groups hailed for keeping city beautiful - 16th January 2015**

<http://www.scotsman.com/what-s-on/glasgow-comedy-festival-set-to-let-loose-laughs-1-3660318>

**Glasgow's old Police HQ expected to be bulldozed - 17th January 2015**

<http://www.heraldscotland.com/news/home-news/glasgows-old-police-hq-expected-to-be-bulldozed.116255846>

**Glasgow's showpiece events have helped city - 19th January 2015**

<http://www.dailyrecord.co.uk/news/scottish-news/glasgows-showpiece-events-helped-city-5001282>

**New skatepark planned for city's canal watersports parks - 19th January 2015**

<http://www.heraldscotland.com/news/home-news/new-skatepark-planned-for-citys-canal-watersports-park.116397287>

**Take first steps to healthy living with Great Local Run - 19th January 2015**

<http://www.eveningtimes.co.uk/lifestyle/active-2014/take-first-steps-to-healthy-living-with-great-local-run-191745n.114180697>

**Glasgow shopping malls Silverburn and Fort continue to grow - 21st January 2015**

<http://www.dailyrecord.co.uk/news/local-news/glasgow-shopping-malls-silverburn-fort-5009029>

---

**Hotel plan for police station - 21st January 2015**

<http://www.dailyrecord.co.uk/news/local-news/glasgow-shopping-malls-silverburn-fort-5009029>

**35 things to do in Glasgow recommended by a local - 22nd January 2015**

<http://metro.co.uk/2015/01/21/35-things-to-do-in-glasgow-recommended-by-a-local-5023263/>

**'Exceptional' year for Glasgow hotels as room rates increase - 22nd January 2015**

<http://news.stv.tv/west-central/307405-exceptional-year-for-glasgow-hotels-as-room-rates-increase/>

**Glasgow 2014 construction contracts 'worth £669m' - 22nd January 2015**

<http://www.bbc.co.uk/news/uk-scotland-scotland-business-30941534>

**Glasgow 2014 tops feel-good poll - 22nd January 2015**

<http://www.heraldscotland.com/news/home-news/glasgow-2014-tops-feel-good-poll.116782256>

**Glasgow is hot spot for office deal - 22nd January 2015**

<http://www.bqlive.co.uk/2015/01/22/glasgow-is-hot-spot-for-office-deal/>

**Stars to descend on Glasgow as city hosts 11th film festival - 22nd January 2015**

<http://news.stv.tv/west-central/307545-stars-to-descend-on-glasgow-as-city-hosts-11th-film-festival/>

**New squad of helpers for Glasgow streets - 24th January 2015**

<http://www.eveningtimes.co.uk/news/new-squad-of-helpers-for-glasgow-streets-195374n.116807352>

**Glasgow Chamber launches Living Wage study - 28th January 2015**

<http://www.heraldscotland.com/business/markets-economy/glasgow-chamber-launches-living-wage-study.117135182>

**Keys to new £842m South Glasgow Hospital handed over - 28th January 2015**

<http://news.stv.tv/west-central/308084-keys-to-new-842m-south-glasgow-hospital-handed-over/>

**New training scheme for city tourism and hospitality workers - 28th January 2015**

<http://www.eveningtimes.co.uk/news/new-training-scheme-for-city-tourism-and-hospitality-workers-195646n.117101951>

---

**Tour of Mackintosh furniture saved from Art School fire - 28th January 2015**

<http://www.eveningtimes.co.uk/news/tour-of-mackintosh-furniture-saved-from-art-school-fire-195637n.117063947>

**Walking and cycling boosted by 'Bridge to Nowhere' path - 28th January 2015**

<http://www.heraldscotland.com/news/transport/walking-and-cycling-boosted-by-bridge-to-nowhere-path.117093906>

**Glasgow property sector to build on Games Legacy - 29th January 2015**

<http://www.scotsman.com/business/economy/glasgow-property-sector-to-build-on-games-legacy-1-3672499>

**New school for Dalmarnock will help east end economy - 4th February 2015**

<http://www.dailyrecord.co.uk/news/local-news/gordon-matheson-new-school-dalmarnock-5093381>

**Glasgow colleges plan new shared curriculum across city - 6th February 2015**

<http://www.dailyrecord.co.uk/news/local-news/glasgow-colleges-plan-new-shared-5113429>

**Hundreds of flats bought in bid to address Glasgow housing problems - 6th February**

<http://news.stv.tv/west-central/309373-hundreds-of-flats-bought-in-bid-to-address-glasgow-housing-problems/>

**Finance chief World looks to Scotland after Commonwealth Games - 9th February 2015**

<http://www.heraldscotland.com/news/home-news/finance-chief-world-looks-to-scotland-after-commonwealth-games.117894172>

**Glasgow Low Emission Zone considered in transport strategy - 9th February 2015**

<http://www.airqualitynews.com/2015/02/09/glasgow-transport-strategy-considers-low-emission-zone/>

**Glasgow shortlisted for UK Council of the Year - 10th February 2015**

<http://www.eveningtimes.co.uk/news/glasgow-shortlisted-for-uk-council-of-the-year-196869n.118085565>

**SSE Hydro to host the World Gymnastics Championships - 10th February 2015**

<http://www.eveningtimes.co.uk/news/build-up-to-world-gymnastics-championships-in-the-hydro-196868n.118070094>

**Buchanan Street Subway station in line for £3m revamp - 11th February 2015**

<http://www.heraldscotland.com/news/transport/buchanan-street-subway-station-in-line-for-3m-revamp.118191944>

---

**Edinburgh and Glasgow airports build on strong performances - 11th February 2015**

<http://www.exposcotland.co.uk/edinburgh-and-glasgow-airports-build-on-strong-performances-as-january-traffic-jumps/>

**Glasgow to co-host the Sainsbury's Indoor Grand Prix - 11th February 2015**

<http://www.eveningtimes.co.uk/sport/other/glasgow-to-co-host-the-sainsburys-indoor-grand-prix.1423660664>

**Glasgow's Merchant Square is sold for millions - 11th February 2015**

<http://www.minutemanpress.co.uk/news/glasgow/glasgows-merchant-square-is-sold-for-millions-12434.html>

**Glasgow hotel named as James Bond's favourite - 11th February 2015**

<http://www.minutemanpress.co.uk/news/glasgow/glasgows-merchant-square-is-sold-for-millions-12434.html>

**Glasgow Welcomes helps city scoop award for people development - 11th February 2015**

<http://glasgow.stv.tv/208391/>

**Blue sky thinking on Glasgow's future - 12th February 2015**

<http://www.heraldscotland.com/news/home-news/blue-sky-thinking-on-glasgows-future.118380331>

**Drone flies high to deliver 'smarter Glasgow' report- 13th February 2015**

<http://www.bbc.co.uk/news/uk-scotland-31440329>

**Glasgow spends £250k on home-grown Turner Prize winner's works - 16th February 2015**

<http://www.heraldscotland.com/news/home-news/glasgow-spends-250000-on-home-grown-turner-prize-winners-works.118528383>

**Ben Stiller premiere raises curtain on Glasgow Film Festival - 17th February 2015**

<http://www.eveningtimes.co.uk/news/curtain-goes-up-on-glasgow-film-festival-197577n.118590581>

**Willow Tea Rooms Trust buy £2.3m shop space - 17th February 2015**

<http://www.eveningtimes.co.uk/news/u/willow-tea-rooms-buy-23m-shop-space-to-create-mackintosh-visitor-and-education-centre.1424085302>

**First residents move into Athletes' Village - 20th February 2015**

<http://www.eveningtimes.co.uk/news/first-residents-move-into-athletes-village-198024n.118951566>

---

**Investment worth £859m for new Royal Navy Type 26 frigates - 20th February 2015**

<http://news.stv.tv/west-central/311127-investment-worth-859m-for-new-royal-navy-type-26-frigates-announced/>

**Buchanan Galleries plans up for approval - 21st February 2015**

<http://www.eveningtimes.co.uk/news/buchanan-galleries-plans-up-for-approval-198105n.118984734>

**Glasgow looks to the future - 24th February 2015**

<https://www.holyrood.com/articles/feature/glasgow-looks-future>

Glasgow 55th best city in the world – 3rd March 2015

<http://www.eveningtimes.co.uk/news/glasgow-55th-best-city-in-the-world-199120n.119843483>

**Glasgow Subway to pilot technology - 3rd March 2015**

<http://www.heraldscotland.com/news/transport/glasgow-subway-to-pilot-technology-that-converts-waste-water-into-heat.119682418>

**Glasgow to host World Irish Dancing Championships in 2018 - 3rd March 2015**

<http://www.bbc.co.uk/news/uk-scotland-glasgow-west-31698480>

**Glasgow launches City Data Hub - 4th March 2015**

<http://cities-today.com/2015/03/glasgow-launches-city-data-hub/>

**Multi-million water and electricity projects - 4th March 2015**

<http://www.eveningtimes.co.uk/news/multi-million-water-and-electricity-projects-nearly-complete-but-199144n.119804688>

**Sauchiehall workshop on future of Glasgow City Centre Strategy - 4th March 2015**

<http://glasgow.stv.tv/articles/312415-you-are-sauchiehall-workshop-on-future-of-glasgow-city-centre-strategy/>

**Kelvingrove park gates return - 5th March 2015**

<http://www.eveningtimes.co.uk/news/kelvingrove-park-gates-restored-199275n.119871884>

**The 'phenomenal success' of the Davis Cup tie in Glasgow - 10th March 2015**

<http://www.dailymail.co.uk/sport/tennis/article-2988428/The-phenomenal-success-Davis-Cup-tie-Glasgow-shows-huge-appetite-tennis-Scotland-believes-Judy-Murray.html>

**Record numbers sign up for city sports clubs - 13th March 2015**

<http://www.eveningtimes.co.uk/news/record-numbers-sign-up-for-city-sports-clubs-200050n.120455875>

---



**The number of NextBike stations will be increased across Glasgow - 14th March 2015**

<http://glasgow.stv.tv/articles/313685-the-number-of-nextbike-stations-will-be-increased-across-glasgow/>

**Glasgow is showing leadership - 16th March 2015**

<http://www.dailyrecord.co.uk/news/local-news/gordon-matheson-glasgow-showing-leadership-5346259>

**Glasgow better place to live - 19th March 2015**

<http://glasgow.stv.tv/articles/314278-heritage-lottery-backed-research-shows-glasgow-better-place-to-live/>

**Magners Summer Nights festival line-up at Kelvingrove Band Stand - 19th March 2015**

<http://www.eveningtimes.co.uk/entertainment/music/glasvegas-reveal-magners-summer-nights-festival-line-up-at-kelvingrove-band-stand-1426602003>

**Turner Prize exhibition planned for Tramway - 19th March 2015**

<http://www.heraldscotland.com/news/home-news/turner-prize-exhibition-planned-for-tramway-121007692>

**Boy racers blitzed - 21st March 2015**

<http://www.eveningtimes.co.uk/news/boy-racers-blitzed-200951n.120994733>

**Glasgow City Council agrees first 'Green Loan' for LED street lighting - 23rd March 2015**

<http://www.dailyrecord.co.uk/business/business-news/glasgow-city-council-agrees-first-5384764>

**Glasgow makes global tourists' top 10 list of best-rated UK destinations - 23rd March 2015**

<http://www.eveningtimes.co.uk/news/u/glasgow-makes-global-tourists-top-10-list-of-best-rated-uk-destinations-1427190378>

**Glasgow shopping powerhouse revealed in report of nearly £1billion - 24th March 2015**

<http://www.dailyrecord.co.uk/news/local-news/glasgow-shopping-powerhouse-revealed-report-5393886>

**Massive £7million upgrade plans for Govan Subway and bus station - 25th March 2015**

<http://www.eveningtimes.co.uk/news/massive-7million-upgrade-plans-for-govan-subway-and-bus-station-201343n.121484510>

**Calls for new bridge over River Clyde to link and Partick - 24th March 2015**

<http://glasgow.stv.tv/articles/314487-glasgow-city-council-govan-partick-charette-calls-for-new-clyde-bridge/>

---

**Glasgow to host first European Sports Championship in 2018 - 26th March 2015**

<http://news.stv.tv/scotland/315118-glasgow-to-host-first-european-sports-championship-in-2018/>

**Graffiti has brought new life to Clydeside walkway - 27th March 2015**

<http://www.eveningtimes.co.uk/news/graffiti-art-breathes-new-life-into-city-201577n.121356744>

**Glasgow prepares for fresh bid to become European Green Capital - 26th March 2015**

<https://www.holyrood.com/articles/feature/glasgow-prepares-fresh-bid-become-european-green-capital>

## **9. MAILING LIST AND SURVEY**

To subscribe to the Health Check please send an email to the address below with your contact details. You can also access the latest and archived issues at:

[www.glasgow.gov.uk/index.aspx?articleid=2977](http://www.glasgow.gov.uk/index.aspx?articleid=2977)

For any further information please contact

City Centre Regeneration  
Housing and Regeneration Services  
Glasgow City Council  
Development and Regeneration Services  
231 George Street  
GLASGOW  
G1 1RX

0141 - 287 - 6540  
[citycentreissues@glasgow.gov.uk](mailto:citycentreissues@glasgow.gov.uk)

Issue 13: April 2015

---