

An aerial photograph of Glasgow City Centre, showing a mix of historic and modern architecture. On the left is the ornate, red-brick Glasgow Museum and Art Gallery. In the center is the modern, multi-story Glasgow City Centre building with a distinctive cantilevered top. To the right is a tall, grey office building. The foreground shows a busy pedestrian street with trees and people walking.

GLASGOW CITY CENTRE

ECONOMIC HEALTH CHECK

APRIL 2016
NO. 15

Welcome
to the fifteenth
edition of

Glasgow city centre's ECONOMIC HEALTH CHECK:

Welcome to the fifteenth edition of Glasgow city centre's Economic Health Check: a progress report on how the city centre is performing against a range of indicators. This edition, produced by the City Centre Regeneration Team within GCC's Development and Regeneration Services, covers the period July - December 2015 (unless otherwise stated).

What is the Health Check?

The objective of the Health Check is to track the impact of economic activity on the city centre, and to provide a baseline from which future performance can be benchmarked.

Trends

The table below provides an at-a-glance colour coded trend indicators.

Colour codes as follows:

- - Improvement
- - Relative stability
- - Decline

Cleanliness

KSB city centre audit shows some decline against previous report.

Footfall

Average headline/overall footfall is down, whilst Night Zone footfall is stable.

Vacant units

Average vacancy rates continue to show relative stability and are comparable with the rest of UK.

Planning & Development

Application rates continue to show upward trends – retail rates hit highest levels.

Tourism

Hotel occupancy rates and airport passenger levels rates continue to hit record highs.

Section	Contents	Page
1	FOOTFALL	6
2	VACANT UNITS	14
3	VACANT SITES	16
4	UK PROPERTY MARKET TRENDS	17
5	ENVIRONMENTAL INDICATORS AND CITY CENTRE INFORMATION	23
6	PLANNING & DEVELOPMENT	28
7	TOURISM	30
8	GLASGOW GOOD NEWS	35
	MAILING LIST, SURVEY AND CONTACT DETAILS	48

STYLE MILE: Background and Area Map

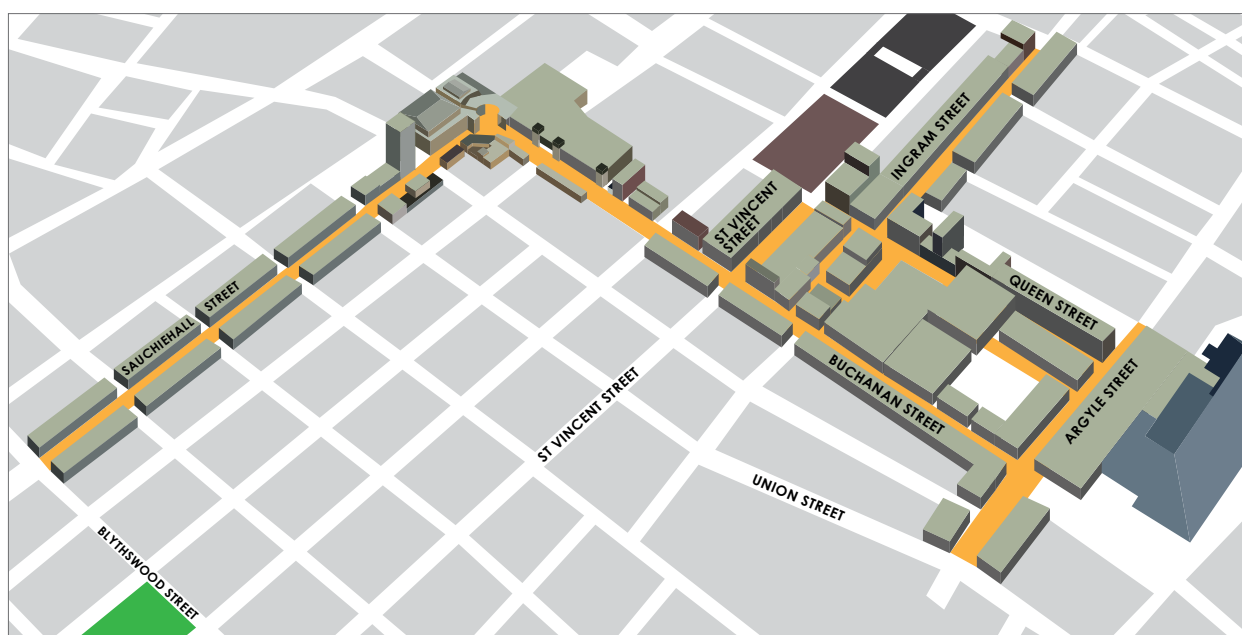


The "Style Mile" relates to the square mile in the heart of Glasgow's city centre and is the principal retail area containing many unique independent designer and flagship stores for British and international retailers.

A map, retail guide and iphone app, (which provides up to the minute details on current

promotional offers) can all be downloaded by visiting: www.glasgowstylemile.com.

The Style Mile is a public-private partnership initiative to promote, protect and enhance Glasgow's city centre retail offering and capitalise on the city's ranking as the UK's top retail destination outside London's West End



TOP 10 BRITISH RETAIL CENTRES

Harper Dennis Hobbs¹ have ranked the top 50 British retail centres by the total retail spend attracted to each centre. The Retail Spend Potential is calculated based on the supply and demand characteristics of each centre. Glasgow are currently ranked in second place.

TOP 10 RETAIL CENTRES BY REVENUE

Callcredit describe their RetailVision² report as the UK's most comprehensive retail dataset. It ranks the top 50 retail centres by revenue – Glasgow currently shows in 4th place (based on annual revenue (£m)).

TOP 10 RETAIL CENTRES BASED ON COMPARISON SPEND (£M)

The most recent Experian report³ (ranking the UK's top retail centres based on comparison spend (£m)) continues to show Glasgow in second place.

VENUESCORE REPORT 2015 - 2016

Javelin Group is described as Europe's leading specialist retail and ecommerce consultancy and work with many of the regions largest retailers and distributors including most of the UK's top 20 retailers. Their VENUESCORE Report 2015-16⁴ evaluates locations in terms of their provision of multiple retailers. A score is attached to each operator which reflects their overall impact on shopping patterns. The resulting aggregate scores are then ranked. The top ten scores are shown below. Whilst London's West End ranks far higher than any other location (with 1,614 points), the VENUESCORE report considers it comprised of a number of separate (albeit interlinked) retail venues. As a result, Glasgow currently ranks in first place.

TOP 10 BRITISH RETAIL CENTRES

1 **Glasgow**
807

2 **Manchester**
766

3 **Birmingham**
686

4 **Leeds**
642

5 **Liverpool**
551

6 **Nottingham**
520

7 **Brighton**
517

8 **Edinburgh**
514

9 **Cardiff**
512

10 **Aberdeen**
464

¹ Harper Dennis Hobbs Retail Centre Reports 2014

² Callcredit RetailVision 2014 Annual Report

TOP 10 RETAIL CENTRES BY REVENUE

1

London

£4,465

2

Glasgow

£1,939

3

Birmingham -

£1,561

4

Manchester -

£1,549

5

Liverpool -

£1,540

6

Leeds -

£1,447

7

Westfield

£1,371

8

Edinburgh -

£1,325

9

Nottingham -

£1,261

10

Bristol -

£1,197

TOP 10 RETAIL CENTRES BASED ON COMPARISON SPEND (£M)

1

Glasgow

807

2

Manchester

766

3

Birmingham

686

4

Leeds

642

5

Liverpool

551

6

Nottingham

520

7

Brighton

517

8

Edinburgh

514

9

Cardiff

512

10

Aberdeen

464

VENUESCORE REPORT 2015 - 2016

1

Oxford Street

£1,434

2

Manchester

£910

3

Birmingham

£849

4

Glasgow

£813

5

Knightsbridge

£710

6

Liverpool

£705

7

Westfield Stratford

£648

8

Leeds

£628

9

Edinburgh

£622

10

Leicester

£619

³ <http://www.experian.co.uk/marketing-services/news-retailscape-uk-retail-centres-best-placed-to-thrive.html>

⁴ Javelin Group VENUESCORE 2015-16

1. FOOTFALL

1.1 Style Mile Footfall

The Style Mile footfall monitor is based on Springboard's Customer Counting and Measurement system that registers footfall at designated counters located throughout the Style Mile. These four core counters are positioned at the following locations:

Buchanan Street at Kiehl's
Argyle Street at Debenhams

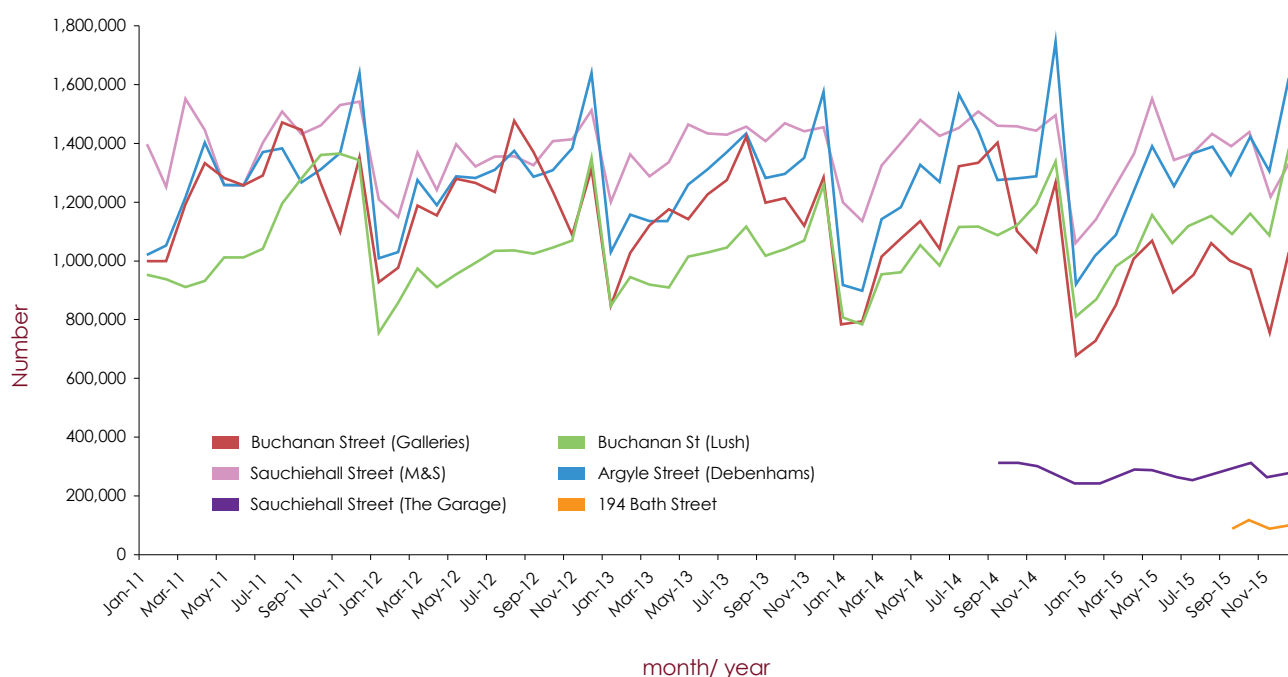
Buchanan Street at Galleries
Sauchiehall Street at Marks and Spencer

Additional counters have also been installed adjacent to the **Garage nightclub** at the **western end of Sauchiehall Street**, and at **194 Bath Street**.

Table 1a⁵ below shows data collated from these counters from January 2011 – December 2015. Springboard counters record footfall over each 24-hour period and register both day and night time economy.

Total footfall recorded across all counters for the period of July to December 2015 fell by **-8.20%** when compared against the same period in 2014. Buchanan Street precinct (at Kiehl's) bucked this trend with no discernible decrease in footfall during the same comparison period.

Table 1a: City Centre Footfall January 2011 - December 2015

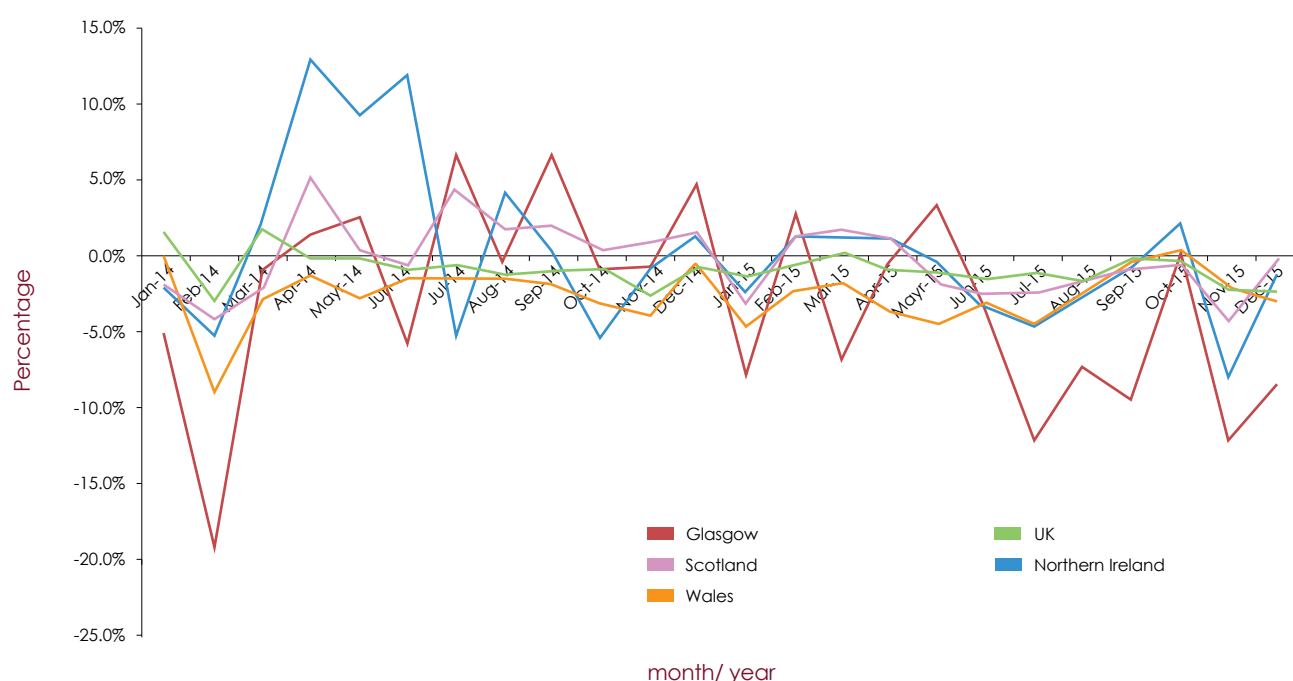


The British Retail Consortium (BRC)/Springboard Retail Footfall Monitor gathers data on customer activity in town and city centre locations, and in out of town shopping locations, throughout the UK using the latest generation automated technology. The Monitor records over 60 million footfall counts per week at over 600 counting locations across 227 different shopping sites in 142 towns and cities across England, Northern Ireland, Scotland and Wales. The Monitor covers the main centres in each nation/region and a representative sample of secondary and smaller town centres.

The Monitor provides the only available broad-based measures of the footfall performance of town centres and out of town shopping locations in the UK.

Table 1b⁶ illustrates the year-on-year change in Glasgow's footfall figures as compared against national comparator data drawn from the BRC/Springboard Retail Footfall Monitor from January 2014 to December 2015.

Table 1b: BRC/ Springboard Footfall Monitor - Year-On-Year % Change



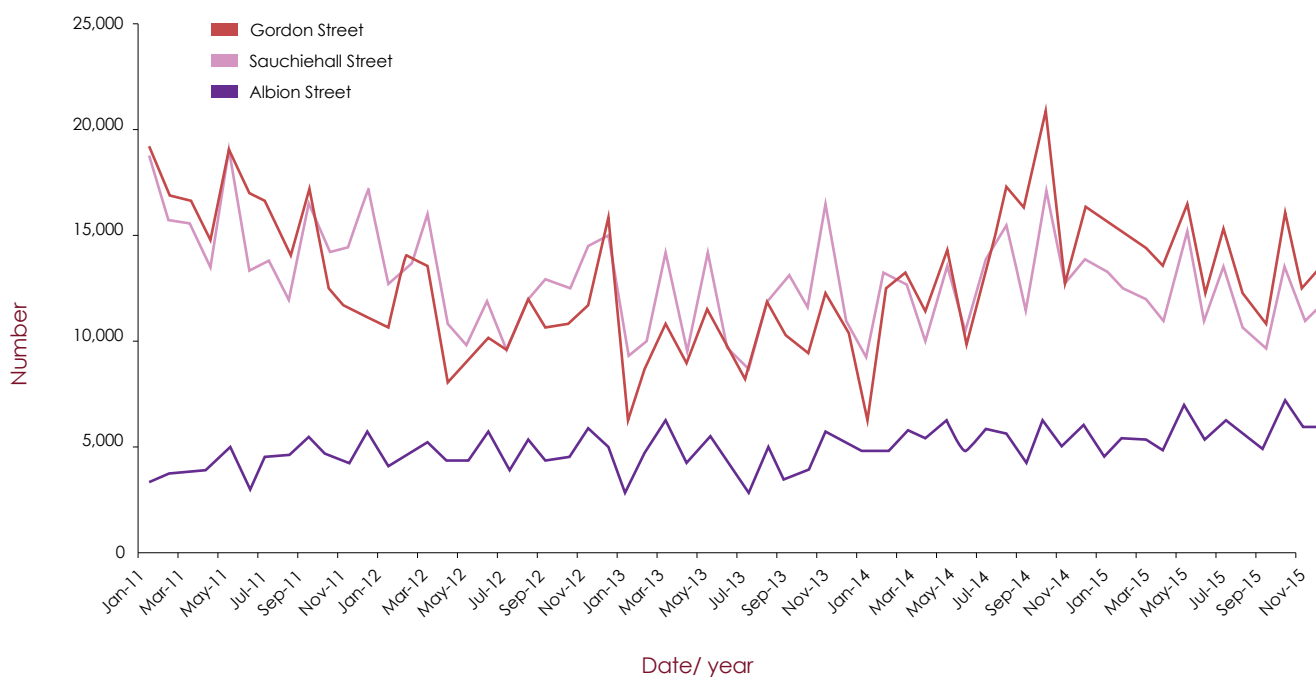
⁶ BRC/ Springboard Footfall & Vacancies Monitor, February 2016

Nitezone footfall

Table 1c⁷ illustrates comparative Nitezone footfall figures from January 2011 - December 2015. The figures (relating to Gordon Street, Sauchiehall Street, and Albion Street) are collated by taxi marshals who are present at the designated taxi pick up points between 10pm and 5am every Friday and Saturday night. They ensure the efficient, safe exit out of the city for users of the night time economy.

Average footfall figures recorded in Gordon Street and Sauchiehall Street appear to have stabilised since mid-2012. Albion Street figures have remained stable throughout. The total Nitezone footfall recorded over all three city centre precincts during 2015 was similar to those recorded in 2014 with a slight fall of only -0.79%.

Table 1c: Nitezone Footfall

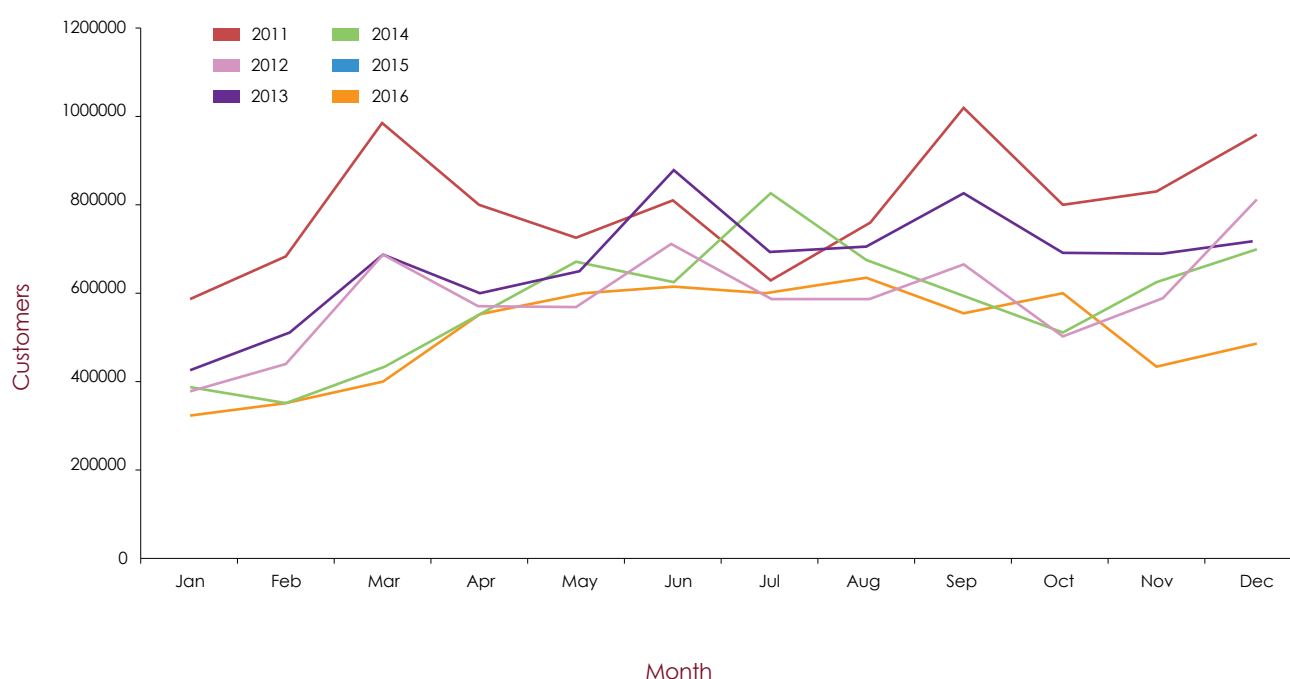


Glasgow's figures are based on the footfall recorded by the Style Mile counters during the hours of 6pm - 4am. It should be noted that whilst this reporting provides some basic benchmarking, due to the placement of the footfall counters involved, it could be argued that it does not best represent the true Night Time Economy footfall which is largely located elsewhere.

ATCM-Springboard collates the Night Time Economy Index⁸ that measures the UK's high street footfall during the hours of 6pm - 4am. The UK national average annual percent change for period July to December 2015 against the same period in 2014 showed a change of -4.98%.

Table 1d⁹ shows the Night Time figures for Glasgow Style Mile from January 2011 to end of June 2015. The Scottish national average over the same period showed a change of -10.92%. For the same period Glasgow's figures showed a change of -13.85%.

Table 1d: ATCM Springboard Glasgow Night Time Economy Figures



⁸ ATCM Springboard Night Time Economy Index – March 2016

⁹ Springboard, March 2016

1.2 SPT Footfall: Subway Footfall

SPT have thirteen reporting periods in which they collate Subway footfall data based on numbers boarding (going through the barrier). From 2012/13 figures have been aligned to a set of 4-weekly traffic return dates whereas previous years reported on a 13 period basis along financial accounting periods.

For example, period 1 for 2015/16 in the graph below represents the 4 weekly period ending 18 April 2015.

Table 1e¹⁰ shows the footfall recorded for each reporting period from 2009/10 onwards. This edition of the Healthcheck looks at data collected over reporting periods 4 to 10 in 2015/16. A comparison of this data with the same data collected 12 months previously shows a change of -3.54% in total footfall figures. However, the increased visitor numbers generated by the Commonwealth Games 2014 must be considered as a contributory factor in the overall calculation.

Table 1e: St Enoch Subway Footfall

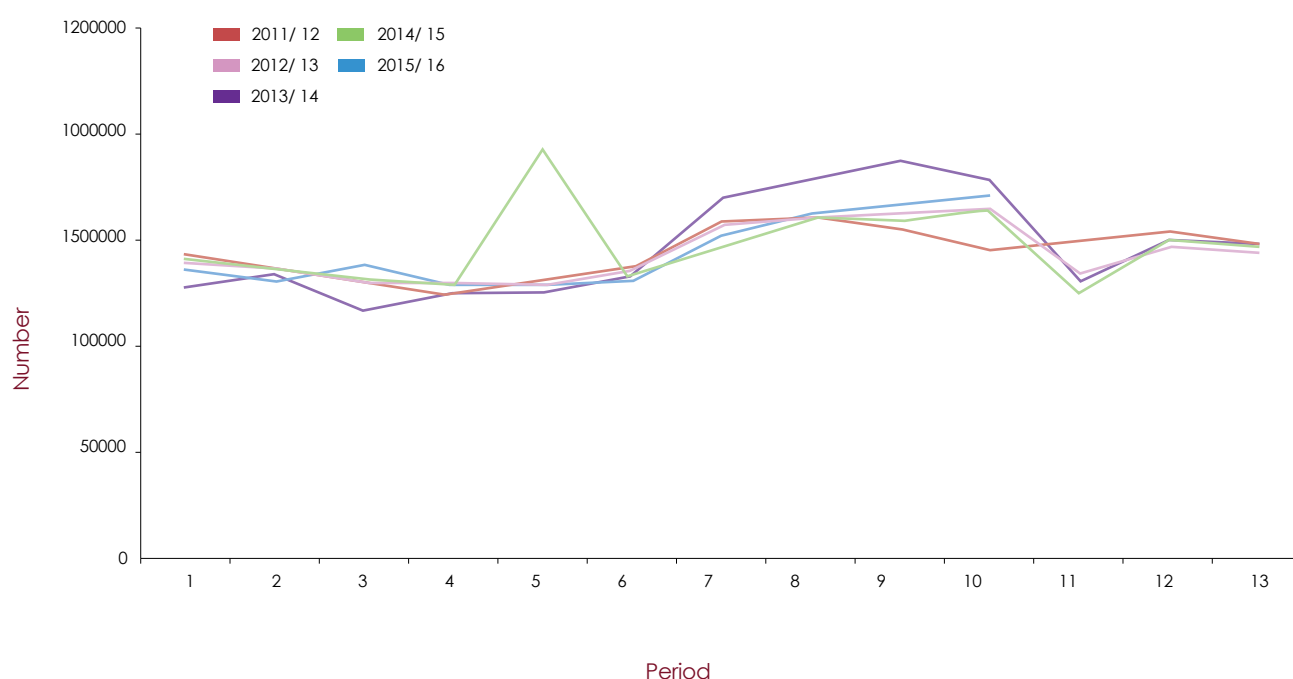
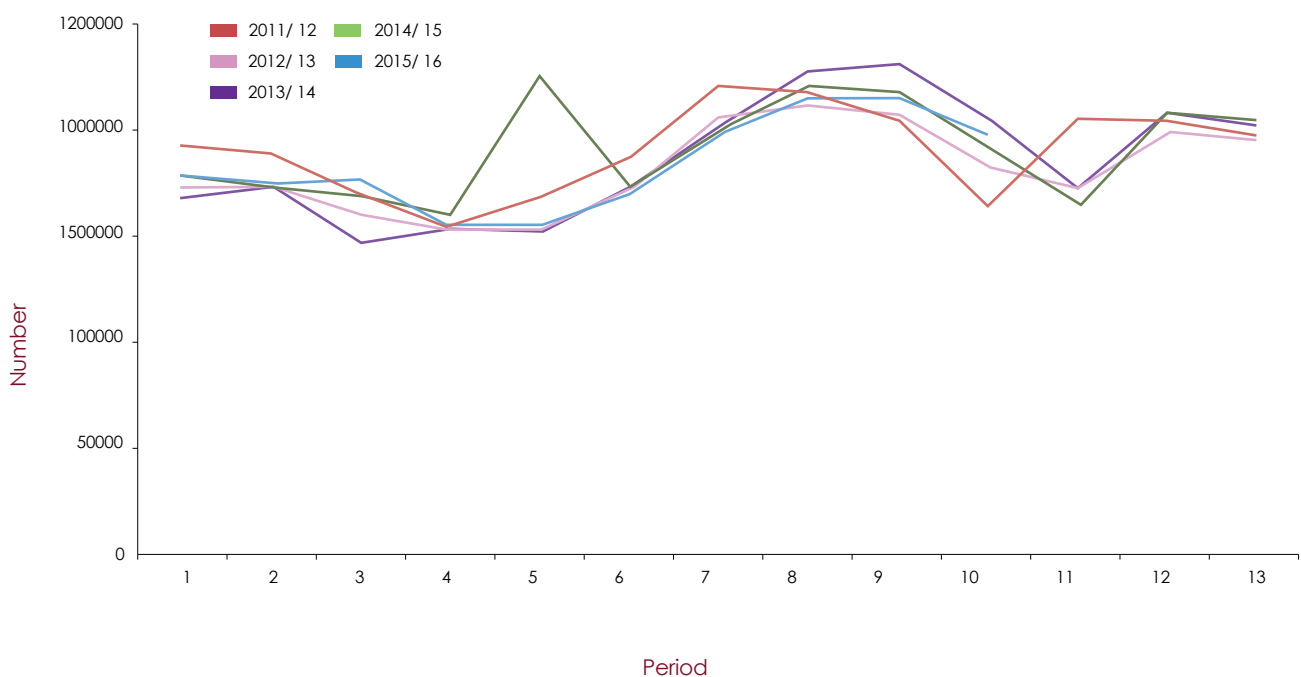


Table 1f¹¹ shows that Buchanan Street Subway station records a higher footfall than St Enoch Subway station. This edition of the Healthcheck looks at data collected over reporting periods 4 to 10 in 2015/16. A comparison of this data with the same data collected 12 months previously shows a change of -6.27% in total footfall figures. Again, the increased visitor numbers generated by the Commonwealth Games 2014 must be considered as a contributory factor in the overall calculation.

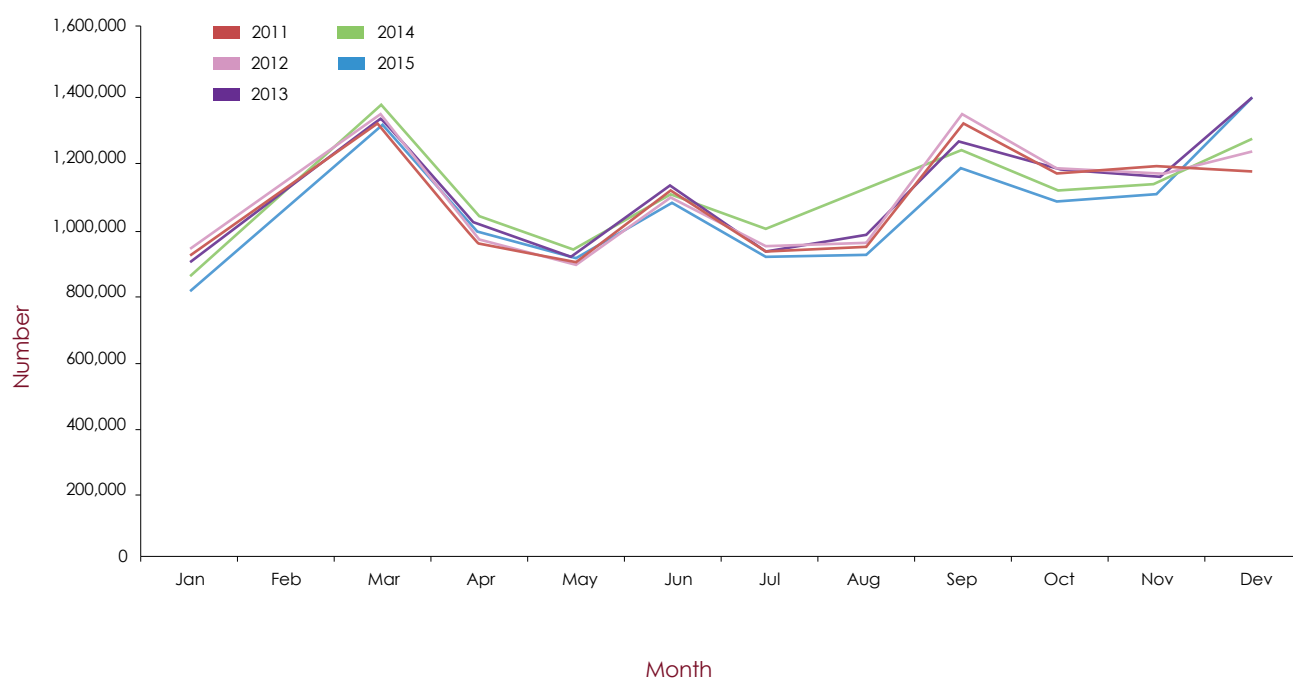
Table 1f: Buchanan Street Footfall



Bus Station Footfall

Table 1g¹² illustrates the footfall at Buchanan Bus Station. Total footfall recorded at this location between July and December 2015 showed a change of -3.57% against the total figures recorded over the same period in 2014. Once again, as previously noted above, the increased visitor numbers generated by the Commonwealth Games 2014 must be considered as a contributory factor in the overall calculation.

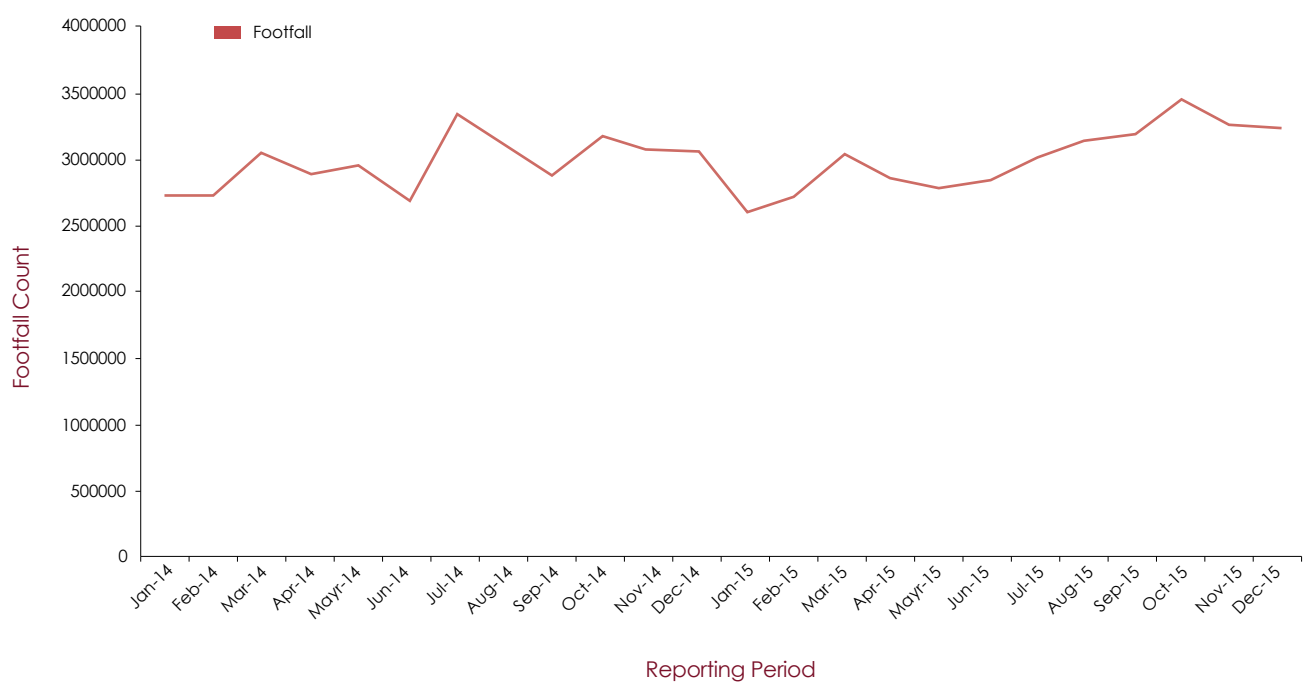
Table 1g: Buchanan Bus Station Footfall



1.3 Network Rail Footfall

Table 1h¹³ illustrates the footfall count recorded by Network Rail at Glasgow Central Train Station. Total annual footfall figures indicate an increase of 1.29% in 2015 against 2014.

Table 1h: Glasgow Central Station - Footfall Count 2014 - 2015

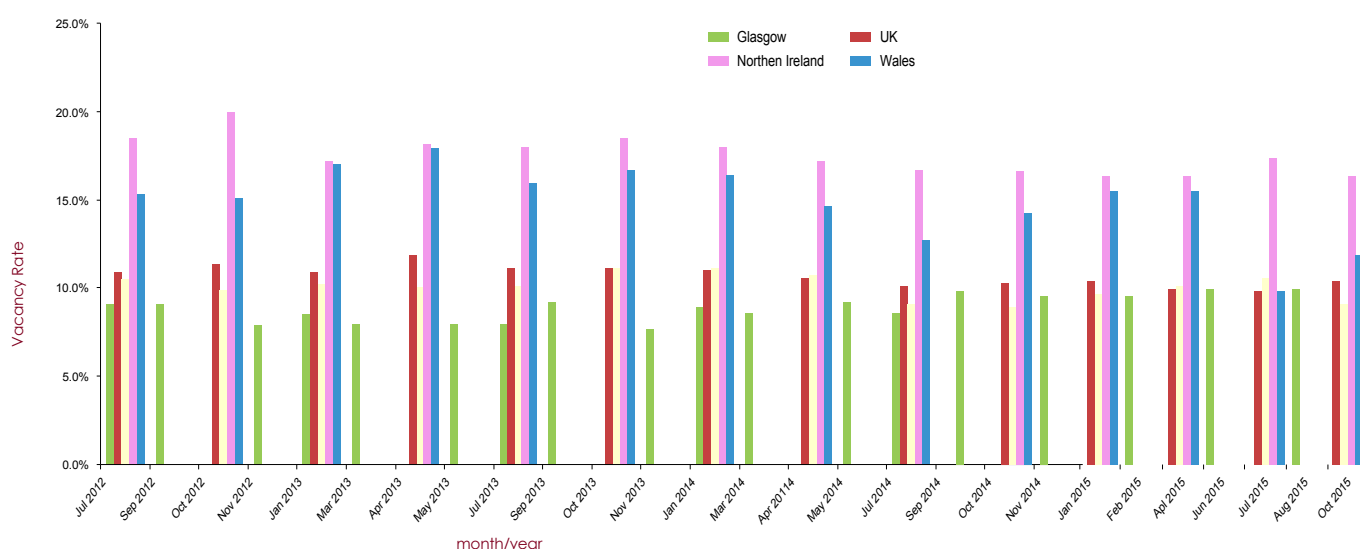


2. VACANT UNITS (STYLE MILE)

Table 2a¹⁴ illustrates the city centre's ground floor vacant unit trend since July 2012 and compares this data against the same figures recorded for other UK comparators¹⁵. In general, the Glasgow report is updated every second month whilst the UK data is reported every quarter. The Glasgow data is a record of the number of vacant units at street level and includes Class 1 (shops), Class 2 (financial, professional and other services - e.g. banks, Class 3 (food and drink - e.g. cafes and restaurants) and Sui Generis (not in any "use class" e.g. pub or hot food takeaways). It does not include vacant units within shopping centres. The UK data is gathered in towns and cities via an online survey of online managers in 450 locations throughout the UK. The vacancy rate is defined as the percentage of the ground floor units in the town centre that are vacant, and a vacant unit is regarded as one which is not trading at the time of the survey (whether or not it is let).

The average annual percentage of vacant units calculated over the rates recorded for Glasgow in 2015 was 9.9%. This is an increase upon last year's average annual percentage which was 9.1%. However, Glasgow's average figure for 2015 is still comparable with the average vacancy rates calculated over the rates recorded for the other UK comparators during the same period which are: UK (9.9%); Scotland (9.9%); Northern Ireland (16.6%); Wales (12.5%).

Table 2a: Style Mile Ground Vacancy Rates

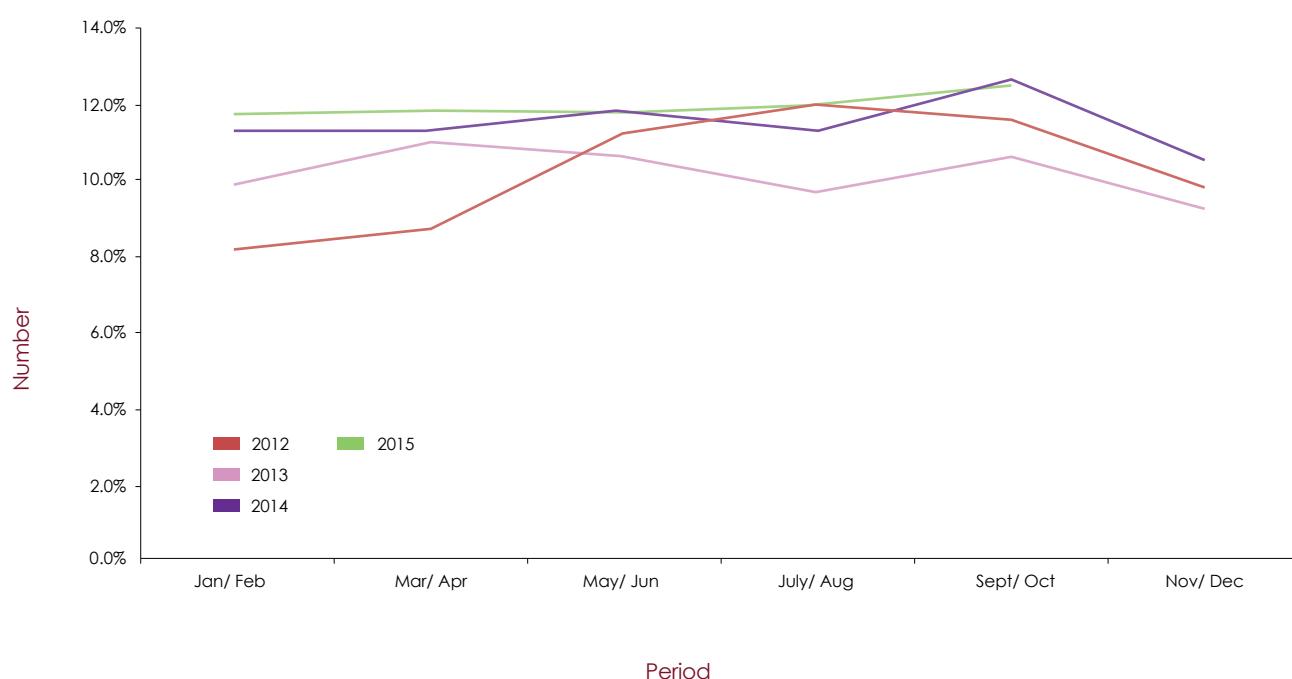


¹⁴ GCC March 2016

¹⁵ BRC/ Springboard Footfall & Vacancies Monitor, March 2016

Table 2b¹⁶ shows vacancy rates for the Style Mile including shopping centres over the reporting periods in years 2012 to 2015. This shows a higher vacancy level to that of ground floor only vacancy rates in the Style Mile. The average annual percentage of vacant units in this category for 2014 was 11.5%. The average annual percentage of vacant units in this category for 2015 was 12.0%. Please note that no data was recorded during November/December 2015.

Table 2b: Style Mile Vacancy including Shopping Centres

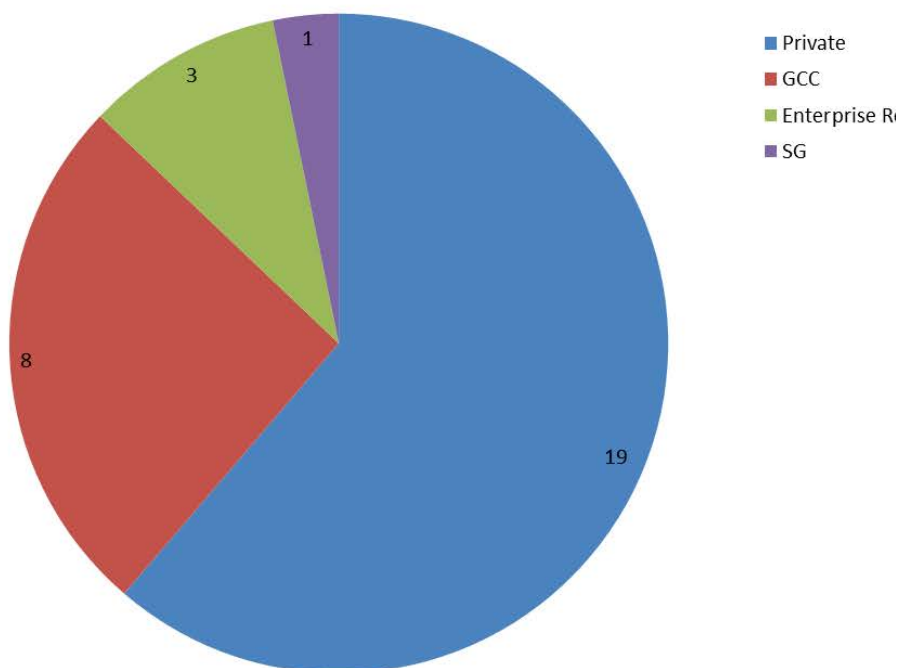


3. VACANT SITES (CITY CENTRE)

Table 3a¹⁷ provides details of vacant and derelict sites within Glasgow city centre. The pie-chart represents 10.32ha of vacant and derelict land across 31 sites within the city centre area bounded by the M8, High Street and the River Clyde. There has been no change in this data since the last issue of the Healthcheck document.

As indicated, the majority of sites are privately owned. Their potential land use is varied from residential to office, retail, civic and mixed use. The majority of sites appear to have had planning consents granted or are in the process of undertaking pre-application work. A number of sites have a temporary use, predominantly car parking, and various others have been temporarily landscaped. Development on these sites can be slow because of the nature, scale and complexity of vacant sites, as well as the impact of the global economic environment.

Table 3a: Vacant Sites Within The City Centre



4. UK PROPERTY MARKET TRENDS

Cushman & Wakefield is a privately held commercial real estate services firm which provides a range of services globally. Their UK Quarterly MarketBeat is a review of market trends and price movements in the UK property markets, which includes an analysis of yields and rental values for the retail, office, industrial, hotel and residential property sectors. It should be noted that these reports are prepared solely for information purposes and do not purport to be a complete description of the markets or developments contained therein.

Further information can be found via: <http://www.cushmanwakefield.co.uk/en-gb/research-and-insight/local-reports/>.

4.1 Industrial

Table 4a¹⁸ shows the indicative prime industrial rent levels over the relevant reporting periods for Glasgow and various other UK comparator locations.

Table 4a: Prime Industrial Rents

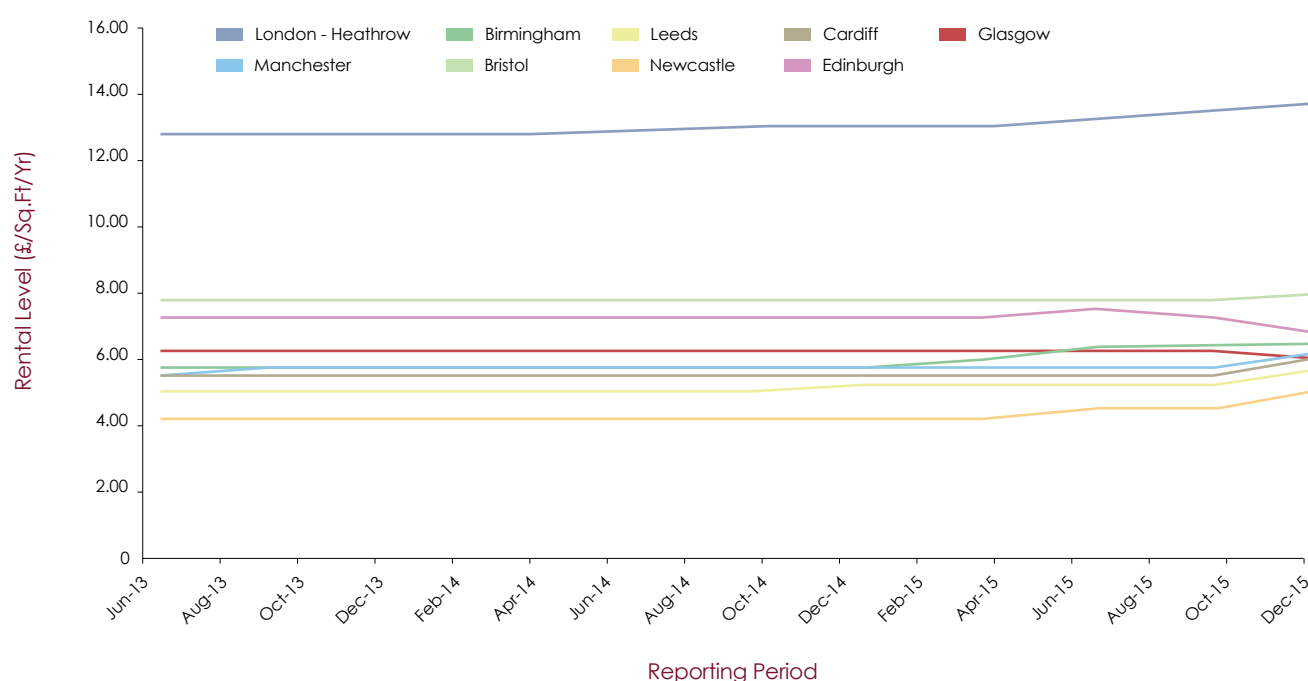
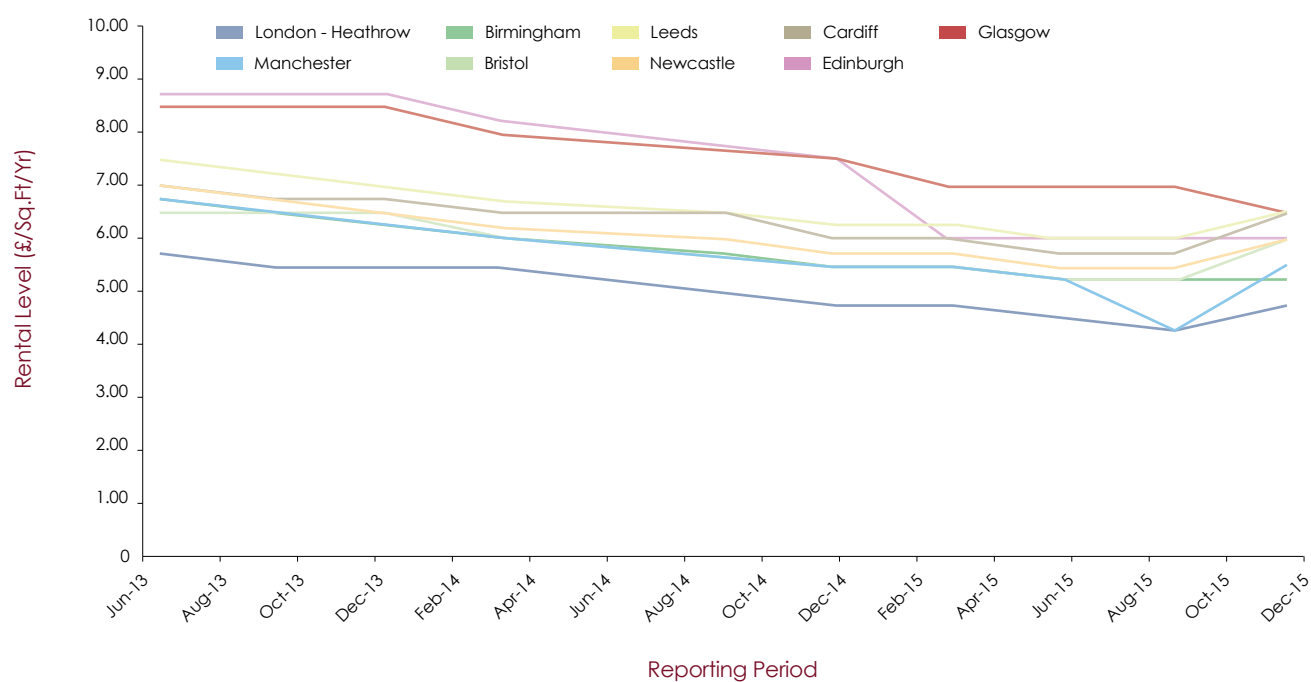


Table 4b¹⁹ shows the indicative prime industrial yields over the relevant reporting periods for Glasgow and various other UK comparator locations.

Table 4b: Prime Industrial Yields



4.2 Office

Table 4c²⁰ shows the indicative prime office rental levels over the relevant reporting periods for Glasgow and various other UK comparator locations.

Table 4c: Prime Office Rents

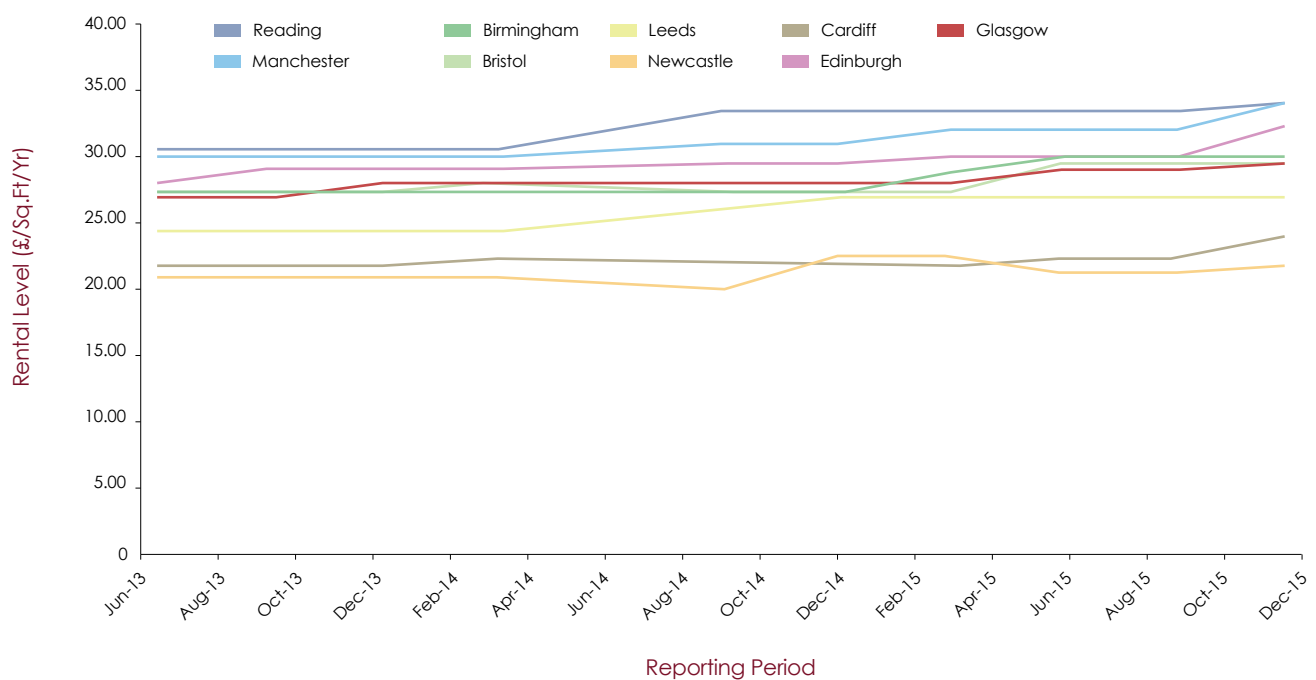
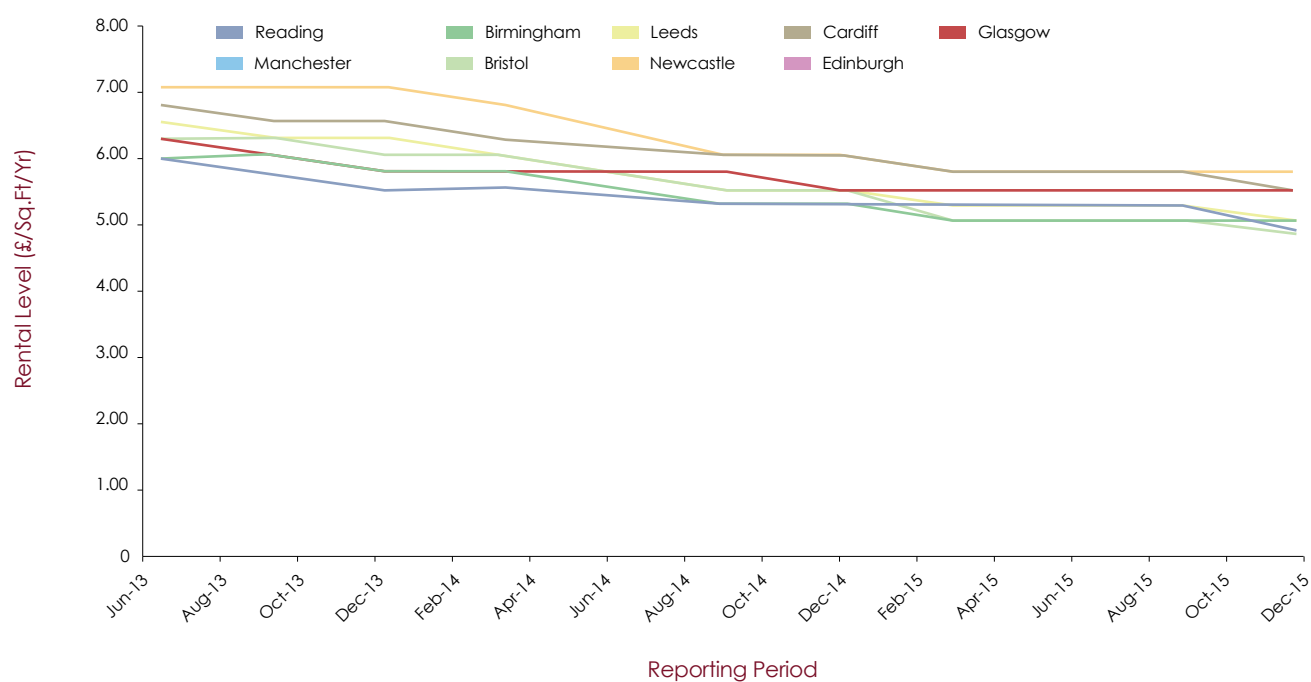


Table 4d²¹ shows the indicative prime office yields over the relevant reporting periods for Glasgow and various other UK comparator locations.

Table 4d: Prime Office Yields



4.3 Retail

Table 4e²² shows the indicative prime retail rental levels over the relevant reporting periods for Glasgow and various other UK comparator locations. Due to the discrepancy between its high rental level figures and the other comparator locations, London (West End) is not included in this table. Please also note that zoning practices can differ between cities.

Table 4e: Prime Retail Rents

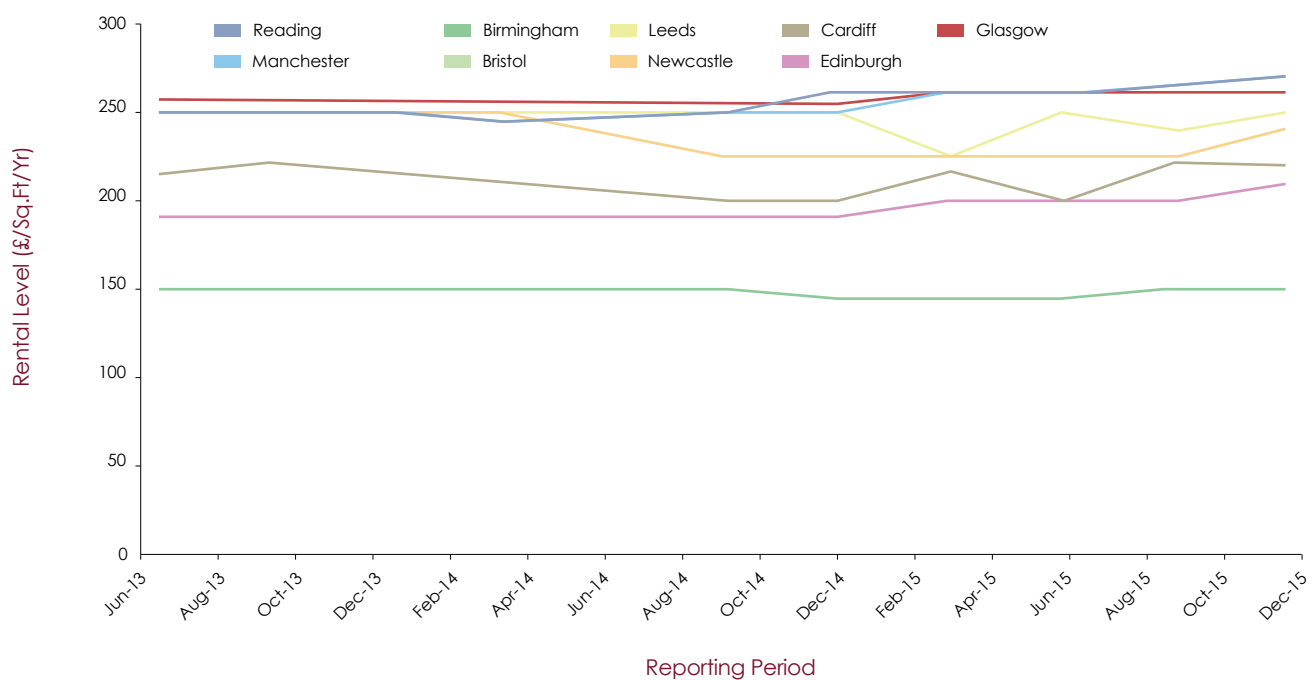
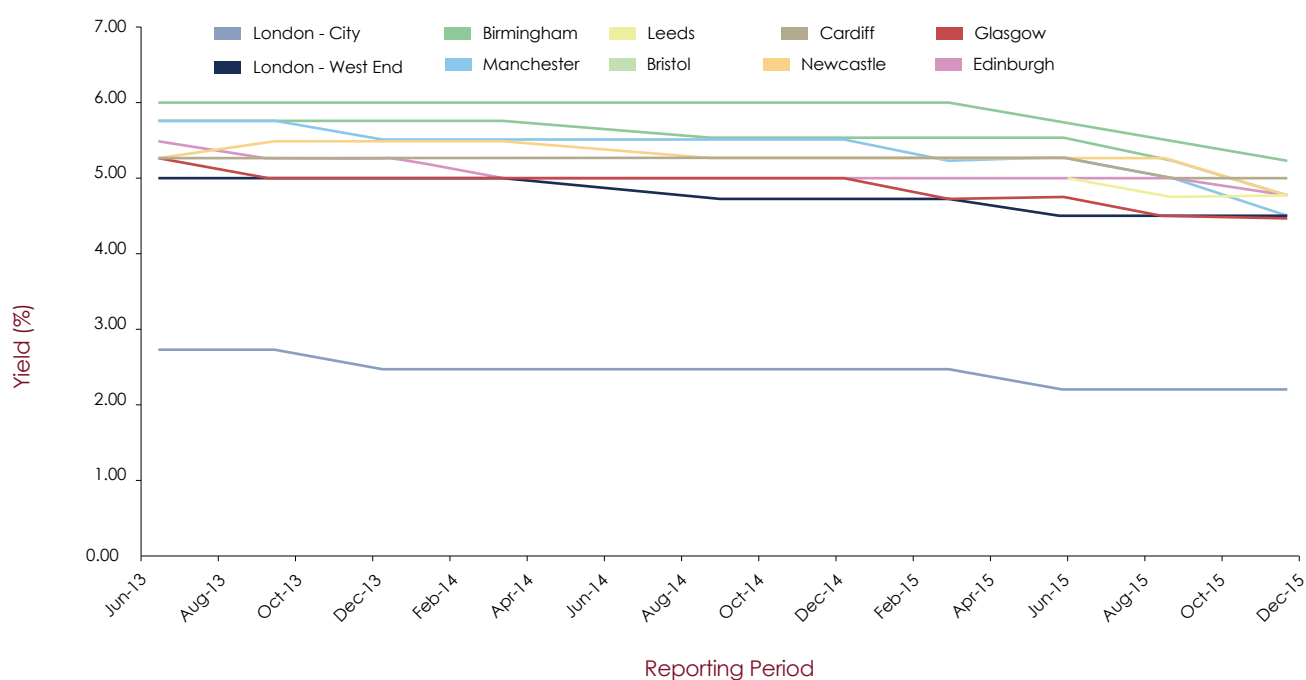


Table 4f²³ shows the indicative prime retail yields over the relevant reporting periods for Glasgow and various other UK comparator locations. Please note that zoning practices can differ between cities.

Table 4f: Prime Retail Yields



5. ENVIRONMENTAL INDICATORS AND CITY CENTRE INFORMATION

5.1 Street Cleanliness

Clean Glasgow was launched by Glasgow City Council in February 2007, and this body commissioned independent street cleanliness surveys of the city centre which have been undertaken by the national environment agency, Keep Scotland Beautiful (KSB). Whilst the annual city centre survey was not repeated in November 2013, the City Centre Regeneration team commissioned a renewal of this report for November 2014 with a view to maintaining this process going forward.

The area surveyed consists of approximately 166 street sites (transects) and the survey reflects the standard of cleanliness of these areas, achieved at the time of the survey and assessed in accordance with the Environmental Protection Act 1990 and its attendant Code of Practice on Litter and Refuse (Scotland) 2006. Criteria assessed include the general standard of cleanliness, sources of litter, types of litter, and adverse environmental quality indicators (AEQIs). Each transect is graded (from A to D) with each grade worth a requisite number of points. The overall city centre Cleanliness Index (CI) is then a reflection of the total points scored as a percentage of the total possible points available.

The CI score for 2015 was 60, with 83% of all transects surveyed found to be of an acceptable standard (i.e. Grade A, B or B+). The overall CI scores for the city centre surveys undertaken to date are as follow:



As part of the independent surveys they conduct, KSB also report on various aspects of street cleanliness including Adverse Environmental Quality Indicators (AEQIs) i.e. common issues affecting the local environment within communities. The number of incidences of these issues recorded in each KSB report has been collated in Table 5a below.

Table 5a

	Mar 2007	Sep 2007	Nov 2008	Nov 2009	Nov 2010	Nov 2011	Nov 2012	Nov 2014	Nov 2015
Dog Fouling	2	2	2	1	1	1	4	1	2
Graffiti	23	21	10	13	16	17	15	4	27
Vandalism	0	1	1	0	1	0	0	0	1
Weeds	4	11	0	9	5	5	2	4	5
Detritus	16	8	11	12	10	12	9	7	7
Gum	43	28	31	66	57	16	46	32	87
Fly-posting	4	2	4	5	7	2	4	1	29
Fly-tipping	1	1	1	2	1	1	1	1	2

The Keep Scotland Beautiful annual survey results for Glasgow city-wide cleanliness are shown in Table 5b as below.

Table 5b

Year	April	June	August (Other LA)	October	December	KSB Validation	February	Score
2010/11	70	70	67	71	74	68	72	69
2011/12	70	71	75	72	73	68	76	70
2012/ 13	72	72	76	71	78	58	72	72
2013/14	74	69	73	81	73	63	83	74

Please note that the methodology involved in the surveys for the year 2014/15 has changed. As a result of this the format of the scoring achieved has also changed to the following.

Year	Assessment 1 (Glasgow City CI)	Assessment 2 (Glasgow City CI)	Assessment 3 (KSB Validation)	Overall Score
2014/ 2015	82	85	76	81
2015/ 2016	69	82		



5.2 Key Performance Indicators (KPIs)

Community Safety Glasgow monitors various quarterly performance indicators relating to crime and antisocial behaviour²⁴. Below is a sample of these indicators relevant to the city centre from January 2014 to December 2015. From April 2012 the data was collected by local authority ward rather than a larger area that had previously incorporated Partick West and Hillhead.

Ward 10 (Anderston/City)	Jan-Mar 2014	Apr-Jun 2014	Jul-Sep 2014	Oct-Dec 2014	Jan-Mar 2015	Apr-Jun 2015	Jul-Sep 2015	Oct-Dec 2015
Square meterage of graffiti removed	5167	7090	5908	3917	5127	5943	4461	3447
Square meterage of flyposting removed	1826	702	582	617	525	495	84	57
Fixed penalty notices issued (includes fly-tipping, dog fouling, litter, cigarette litter and chewing gum)	3643	3987	3841	2894	3100	3279	3271	2236
Number of school, community and business clean-ups undertaken	20	16	65	56	54	102	92	81
Number of volunteers actively engaged with CSG through NIES ²⁵	76	87	354	174	223	451	242	198

²⁴ CSG, March 2016

²⁵ Neighbourhood Improvement and Enforcement Service

5.3 Crime and antisocial behaviour

Table 5c provides data on crime, incidents and antisocial behaviour (ASB) for the period of January to December 2015. Due to operational issues arising from the transition from Strathclyde Police to Police Scotland, data for the period July to December 2014 was unavailable for the purposes of this document. A comparison between the annual figures for 2015 and 2013 for reference purposes has therefore been made available instead.

The data collated covers the Local Community Planning Partnership Central and West area, which is an aggregation of the Council wards of Partick West, Hillhead and Anderston/City. This is the largest local CPP in the City by population size.

Table 5c: Crime/ASB indicators - Central & West neighbourhood

KPI Type	January - December 2013	January – December 2015	+/-	% change
ASB Incidents	8563	6705	-1858	-22%
Youth Disorder	378	336	-42	-11%
ASB Crime	13364	10844	-2520	-19%
Violent Crime	1957	1906	-51	-3%

DEFINITIONS

- **ASB Incidents** - Police Scotland incidents relating to complaints, disturbances, neighbour and noise complaints.
- **Youth Disorder** - the same as above but filtered to isolate youth related incidents by disposal code/qualifier and free text search for phrases indicating youth involvement.
- **ASB Crime** - data from the Police Scotland Corporate Database covering a variety of ASB type offences relating to disregard for community wellbeing (such as BOP, threatening or abusive behaviour, drunk and incapable behaviour etc.), environmental damage (such as littering, vandalism etc.), misuse of public space (such as street drinking, prostitution, and all Fixed Penalty Notices).
- **Violent Crime** - all Group 1 crimes of violence and simple/common assaults taken from the Police Scotland Corporate Database.

6. PLANNING AND DEVELOPMENT

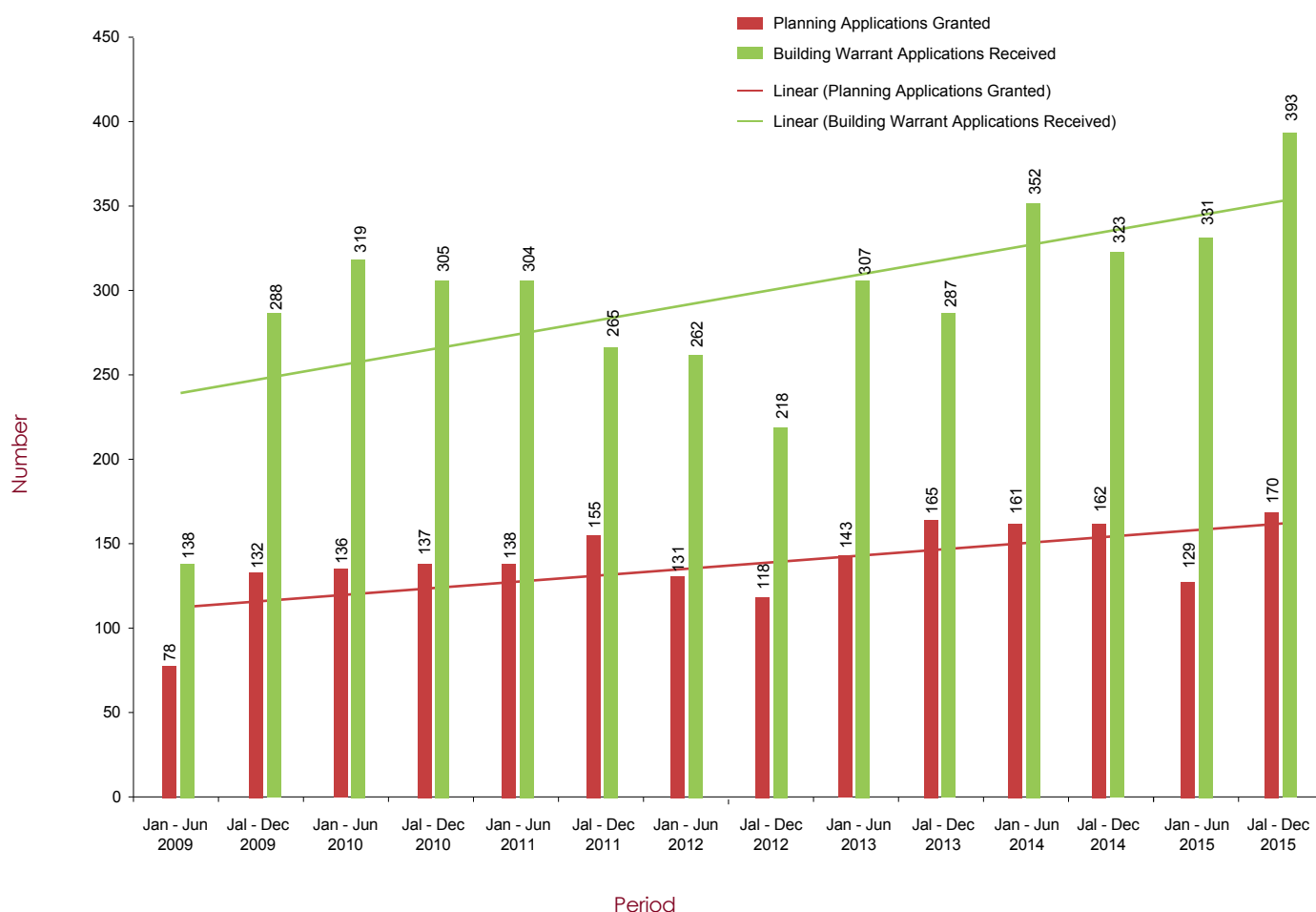
6.1 Planning Applications and Building Warrant Applications

Table 6a²⁶ provides a comparison of both planning applications granted and building warrant applications received within Ward 10 (Anderston/City centre) against the periods January to June and July to December for years 2009 to 2015.

The number of planning applications granted and building warrant applications received for period July to December 2015 (against the same period in 2014) showed an increase of 5% and 22% respectively, and now stand at their highest levels since publication of the Healthcheck documents commenced.

The number of planning applications granted and building warrant applications received during the whole of 2015 (against 2014) showed a decrease of -7% and increase of 7% respectively.

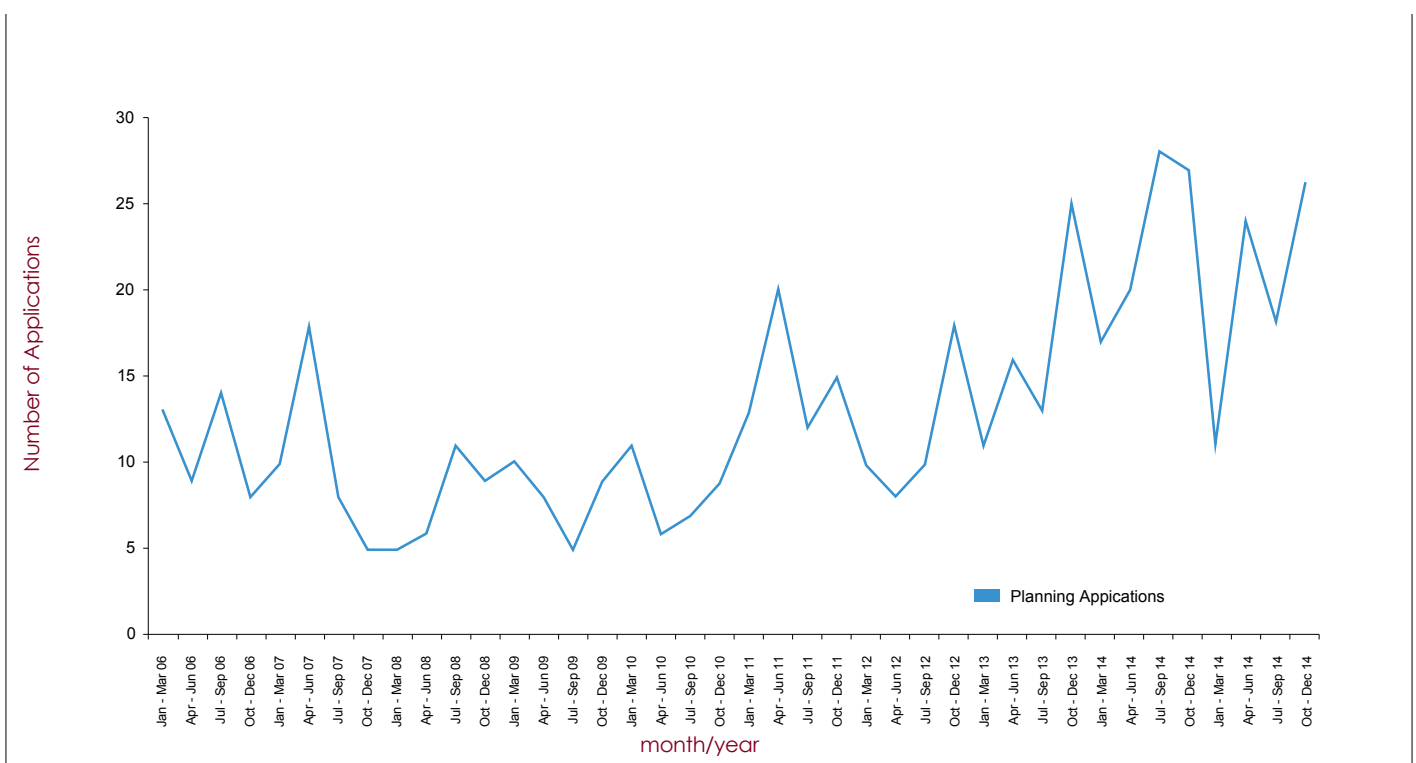
Table 6a: Ward 10 Anderston/ City



6.2 City Centre Retail Planning Applications

Table 6b²⁷ tracks the quarterly numbers of retail planning applications approved since January 2006 to December 2015 using monthly data collated by GCC. Within this timeframe, the figures for the whole of 2014 were the highest yet recorded. The figures collected from July to December 2015 show a change of -20.0% against the same reporting period in 2014, whilst the overall annual figures collected for 2015 were down -14.1% against those collected in 2014.

Table 6b: City Centre: Retail Planning Applications 2006 - 2015



²⁷ ATCM Springboard National High Street Index, March 2015

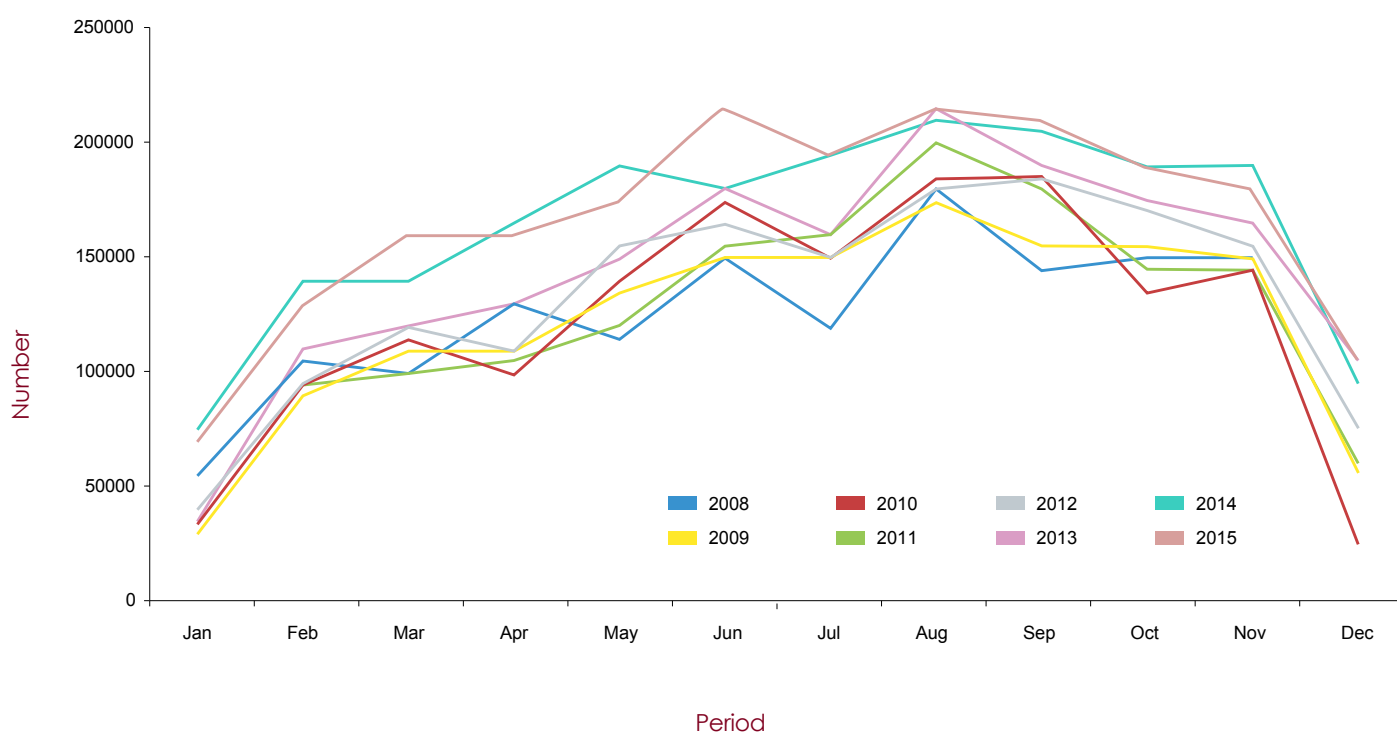
7. TOURISM

7.1 Glasgow Hotel Occupancy Rates

The data recorded for hotel occupancy rates is based on 22 city centre hotels.

Table 7a²⁸ illustrates the hotel occupancy rates from 2008 to 2015. The average hotel occupancy rate recorded over the period June to December in 2014 was 86.2%. The rate recorded over the same period in 2015 was 86.5%.

Table 7a: Glasgow Hotel Occupancy Rates



²⁸ GGHA City of Glasgow Forecaster – Zone A (provided by GCMB January 2016)

Table 7b²⁹ illustrates the average hotel occupancy rates for previous years. The average hotel occupancy rate for 2014 was recorded at 83.4% - this is the highest rate yet recorded.

Table 7b: Yearly Average Hotel Occupancy Rates (%)

2000	2001	2002	2003	2004	2005	2006	2007
65.7	65.5	66.0	68.4	70.8	71.5	74.3	77.4
2008	2009	2010	2011	2012	2013	2014	2015
74.4	74.4	75.4	75.1	77.4	78.9	82.9	83.4

²⁹ Ibid

7.2 Tourist Surveys

The quarterly Lynn Jones Forecasting report system previously available through the Visitract online survey is no longer being used by Glasgow City Marketing Bureau. As a result, this particular form of data collection is no longer available and other methods are currently being appraised going forward.

7.3 Glasgow International Airport: Passenger Numbers

Glasgow International Airport operates 365 days a year, 24 hours a day and deals with approximately 7.4 million passengers a year, generating almost £200 million annually to the economy³⁰.

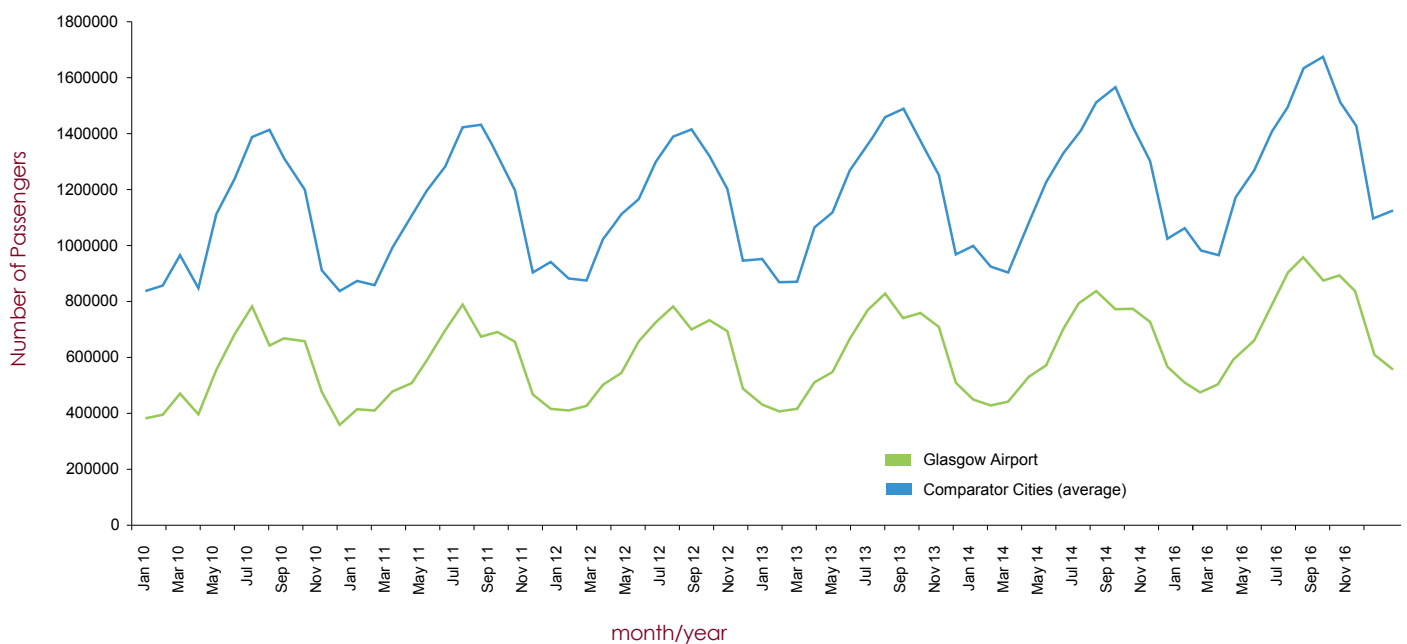
Further snapshot facts and figures on the airport can be accessed via the following link:

<http://www.glasgowairport.com/about-us/facts-and-figures>

Table 7c³¹ illustrates Glasgow Airport's total passenger numbers and how they compare to an average taken of other cities³². The figures cover the period January 2010 - December 2016 and relate to the number of terminal passengers recorded by the Civil Aviation Authority. Glasgow Airport and its comparators tend to demonstrate the same yearly trends.

Comparing the second half of 2015 against the second half of 2014, Glasgow Airport demonstrated a 12.27% increase in average monthly passenger numbers. In the same year on year comparison, UK comparator cities showed an increase of 6.17% in average monthly passenger numbers. Overall average annual increases were 12.94% and 6.02% respectively.

Table 7c: Glasgow Airport Terminal Passenger Numbers



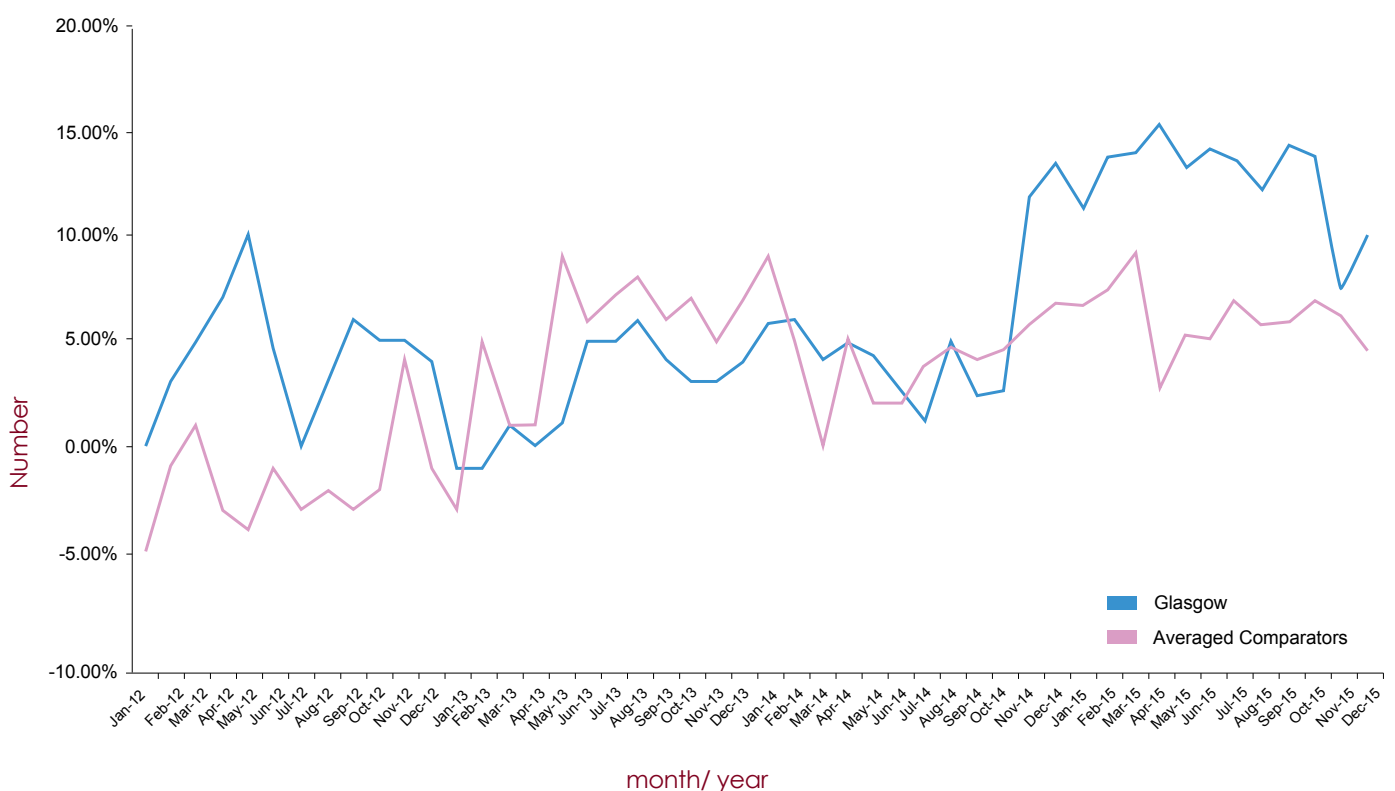
³⁰ Glasgow Airport website accessed February 2016

³¹ CAA website accessed February 2016

³² Birmingham, Bristol, Cardiff, Edinburgh, Gatwick, Heathrow, Leeds, Liverpool, London City, London Luton, Manchester, Newcastle, Norwich and Stansted

Table 7d³³ shows the year-on-year percentage rate change in airport passenger numbers recorded at Glasgow Airport for each month. For comparison purposes, a similar calculation is made for the year-on-year percentage rate change in the average airport passenger numbers of the comparator cities. The graph shows that Glasgow performed better than the average of the comparator cities during the second half of 2015 (11.94% against 6.12%), and during 2015 overall (12.80% against 6.08%).

Table 7d: Annual Change in Airport Passenger Numbers



8. GLASGOW NEWS ROUND-UP

Glasgow to build its future on sustainable foundations - 11 September 2015

<http://www.scottishconstructionnow.com/8135/glasgow-to-build-its-future-on-sustainable-foundations/>

Glasgow University plans massive £775m estate refurbishment - 14 September 2015

<http://www.thenational.scot/news/glasgow-university-plans-massive-775m-estate-refurbishment.7546>

Thousands of affordable homes for communities across Glasgow - 19 September 2015

http://www.eveningtimes.co.uk/news/13770991.Thousands_of_affordable_homes_for_communities_across_Glasgow

£125m investment in Glasgow's electricity network - 23 September 2015

http://www.eveningtimes.co.uk/news/13777432._125m_investment_in_Glasgow__s_electricity_network/

Following the Glasgow Mural Trail - 23 September 2015

<http://www.scotsman.com/lifestyle/arts/visual-arts/following-the-glasgow-mural-trail-1-3896114>

Historic Govanhill Baths awarded £1.2m lottery grant - 24 September 2015

<http://www.bbc.co.uk/news/uk-scotland-34336834>

Glasgow on display: The Turner Prize highlights the city's artistic credentials - 29 September 2015

<http://www.independent.co.uk/travel/uk/glasgow-on-display-the-turner-prize-highlights-the-city-s-artistic-credentials-a6671421.html>

Glasgow housing plan moves ahead with £73m seal of approval - 30 September 2015

<http://www.glasgowsouthandeastwoodextra.co.uk/news/local-headlines/glasgow-housing-plan-moves-ahead-with-73m-seal-of-approval-1-3902782>

Glasgow's infamous 'bridge to nowhere' wins national infrastructure award - 1 October 2015

http://www.eveningtimes.co.uk/news/13796071.Glasgow_s_infamous__bridge_to_nowhere__wins_national_infrastructure_award/

Scottish council agrees 'green loan' to finance LED street lighting - 2 October 2015

<http://www.voltimum.co.uk/articles/scottish-council-agrees-green-loan-finance-led-street-lighting>

UK's Network Rail to start electrification work on main Edinburgh-Glasgow line

- 5 October 2015

<http://www.railway-technology.com/news/newsuks-network-rail-to-start-electrification-work-on-main-edinburgh-glasgow-line-4685308>

Construction of 295ft Royal Navy warship HMS Trent begins in Glasgow - 8 March 2015

<http://news.stv.tv/west-central/1330245-hms-trent-under-construction-at-bae-systems-glasgow-for-royal-navy/>

Tennent's backs new Glasgow venue - 7 October 2015

http://www.heraldscotland.com/business/13807615.Tennent_s_backs_new_Glasgow_venue/

Glasgow car park to become 400 bedroom hotel in £6.75m deal - 8 October 2015

http://www.eveningtimes.co.uk/news/13833809.Find_out_which_Glasgow_car_park_is_set_to_become_a_400_bedroom_hotel_in___6_75m_deal/?ref=mr&lp=3

Glasgow restaurant The Gannet named Scottish Restaurant of the Year - 6 October 2015

<http://glasgow.stv.tv/articles/1330213-glasgow-restaurant-the-gannet-named-scottish-restaurant-of-the-year/>

Glasgow crowned UK Airport of the Year - 9 October 2015

<http://www.bbc.co.uk/news/uk-scotland-scotland-business-34486697>

Kenny Dalglish opens £3.5m Glasgow Games Legacy Hub - 9 October 2015

http://www.heraldscotland.com/news/13838081.Kenny_Dalglish_opens___3_5m_Glasgow_Games_Legacy_Hub/

Games city scoops award for traffic management - 14 October 2015

http://www.heraldscotland.com/news/13847147.Games_city_scoops_award_for_traffic_management/

World's top gymnasts set to dazzle on Glasgow stage - 19 October 2015

http://www.heraldscotland.com/opinion/13877599.World_s_top_gymnasts_set_to_dazzle_on_Glasgow_stage/

Glasgow's Celtic Connections festival brings 2,500 musicians to city - 20 October 2015

<http://www.bbc.co.uk/news/uk-scotland-glasgow-west-34580874>

SECC wins two major event industry awards - 16 October 2015

<http://www.incentivetravel.co.uk/news/glasgow/29406-secc-wins-two-major-event-industry-awards>

City of Glasgow College boss: "They come here to fulfil their dreams" - 27 October 2015

http://www.eveningtimes.co.uk/news/13897853.City_of_Glasgow_College_boss___They_come_here_to_fulfill_their_dreams/

Work starts on new £16m Glasgow medical imaging centre - 26 October 2015

http://www.eveningtimes.co.uk/news/13897385.Work_starts_on_new___16m_Glasgow_medical_imaging_centre/

Gaming festival given the go-ahead for Glasgow 2016 will place Scotland as a 'global gaming leader' - 27 October 2015

<http://www.dailyrecord.co.uk/news/scottish-news/gaming-festival-given-go-ahead-6713989>

Suffragette Oak in Glasgow is named Scotland's Tree of the Year - 28 October 2015

<http://www.bbc.co.uk/news/uk-scotland-glasgow-west-34655433>

Revised plans for Glasgow whisky experience and distillery - 29 October 2015

<http://www.scottishconstructionnow.com/9083/revised-plans-for-glasgow-whisky-experience-and-distillery/>

New College Boosts Glasgow's Maritime Renaissance - 29 October 2015

http://www.shippingtimes.co.uk/item_10742.html

World Gymnastics Championships in Glasgow hailed as setting "a new benchmark"

- 2 November 2015

http://www.eveningtimes.co.uk/news/13929979.World_Gymnastics_Championships_in_Glasgow_hailed_as_setting___a_new_benchmark___/

Glasgow rivals capital in tourists race - 2 November 2015

<http://www.thetimes.co.uk/tto/news/uk/scotland/article4602373.ece>

Luxury development attracts celebrity buyers and creates 200 jobs for the city - 5 November 2015

http://www.eveningtimes.co.uk/news/13945721.Luxury_development_attracts_celebrity_buyers_and_creates_200_jobs_for_the_city/

Plans hatched for new public park...on a roof covering Scotland's busiest motorway stretch - 6 November 2015

http://www.heraldscotland.com/news/13948781.Plans_hatched_for_new_public_park___on_a_roof_covering_Scotland_s_busiest_motorway_stretch/

Bright idea: Glasgow's buildings get light make-over for city conference - 9 November 2015

http://www.eveningtimes.co.uk/news/13953414.Bright_idea__Glasgow_s_buildings_get_light_make_over_for_city_conference/

Facelift for one of Glasgow's grandest buildings - 10 November 2015

http://www.eveningtimes.co.uk/news/13982300.Facelift_for_one_of_Glasgow_s_grandest_buildings/

Plans to turn Cardonald Street into Glasgow shopping destination - 12 November 2015

http://www.eveningtimes.co.uk/news/14022927.Plans_to_turn_Cardonald_street_into_Glasgow_shopping_destination/

Then and Now: The transformation of Glasgow's landmark buildings - 10 November 2015

<http://www.scotlandnow.dailyrecord.co.uk/lifestyle/now-transformation-glasgows-landmark-buildings-6768143>

Glasgow Airport reports 'busiest' October in eight years - 11 November 2015

<http://www.dailyrecord.co.uk/business/business-news/glasgow-airport-reports-busiest-october-6809235>

Next stage approval for Glasgow City Council plans to build park over M8 at Charing Cross as part of Sauchiehall and Garnethill revamp - 13 November 2015

http://www.eveningtimes.co.uk/news/14029320.Next_stage_approval_for_Glasgow_City_Council_plans_to_build_park_over_M8/

Laurieston receives top accolade at Scottish Government Quality in Planning Awards

- 13 November 2015

<http://www.scottishconstructionnow.com/9362/laurieston-receives-top-accolade-at-scottish-government-quality-in-planning-awards/>

Glasgow's Botanic Gardens gets its electric makeover - 13 November 2015

http://www.eveningtimes.co.uk/news/14029305.Glasgow_s_Botanic_Gardens_gets_its_electric_makeover/

RSNO launch new purpose-built home in Glasgow - 16 November 2015

<http://www.scotsman.com/lifestyle/culture/music/rsno-launch-new-purpose-built-home-in-glasgow-1-3949266>

Glasgow's subway system prepares for a new age - 16 November 2015

<http://www.scotsman.com/news/transport/glasgow-s-subway-system-prepares-for-a-new-age-1-3949375>

Christmas carnival to be held in Glasgow - 18 November 2015

http://www.eveningtimes.co.uk/news/14038712.Christmas_carnival_to_be_held_in_Glasgow/

Safe home for students as Glasgow University signs up to taxi scheme - 14 November 2015

http://www.eveningtimes.co.uk/news/14031654.Safe_home_for_students_as_Glasgow_University_signs_up_to_taxi_scheme/

Glasgow turns to smart lights, apps and Uber-style services to evolve as smart city

- 18 November 2015

<http://www.v3.co.uk/v3-uk/feature/2434946/glasgow-turns-to-smart-lights-apps-and-uber-style-services-to-evolve-as-smart-city>

Hotels "nearly full" in Glasgow, new stats show - 19 November 2015

http://www.eveningtimes.co.uk/news/14042048.Hotels__quot_nearly_full__quot_in_Glasgow__new_stats_show/

Glasgow School of Art restoration 'to cost £35m' - 18 November 2015

<http://www.scotsman.com/lifestyle/culture/art/glasgow-school-of-art-restoration-to-cost-35m-1-3951368>

World class research centre leading the way - 19 November 2015

http://www.eveningtimes.co.uk/news/14042050.World_class_research_centre_leading_the_way/

Glasgow named in 'Top 20 Holiday Destinations' by National Geographic Traveller

- 19 November 2015

<http://www.dailyrecord.co.uk/news/scottish-news/glasgow-named-top-20-holiday-6863760>

Travel: A feast of fun in Glasgow, the world's friendliest city - 21 November 2015

http://www.bournemouthcho.co.uk/news/14093056.Travel__A_feast_of_fun_in_Glasgow__the_world_s_friendliest_city/

The Style Mile Christmas Carnival takes over Glasgow - 22 November 2015

http://www.eveningtimes.co.uk/news/14095860.In_Pictures_and_Video_Glasgows_Style_Mile_Christmas_Carnival__/

Plans for high-speed rail link between Glasgow city centre and Glasgow Airport back on track - 25 November 2015

<http://www.dailyrecord.co.uk/news/scottish-news/plans-high-speed-rail-link-6900376>

City of Glasgow College tops the medal charts - 27 November 2015

http://www.eveningtimes.co.uk/news/14107714.City_of_Glasgow_College_tops_the_medal_charts/

Glasgow launches sixth NiteZone for festive revellers - 1 December 2015

http://www.eveningtimes.co.uk/news/14113753.City_launches_fourth_NiteZone_for_festive_revellers/

Revamp of Glasgow city centre bus services in £3m Fastlink plan - 1 December 2015

<http://news.stv.tv/west-central/1334384-state-of-the-art-bus-facilities-for-union-street-in-3m-fastlink-plan/>

World's largest LEGO advent calendar comes to Glasgow - 1 December 2015

http://www.eveningtimes.co.uk/news/14115881.World_s_largest_LEGO_advent_calendar_comes_to_Glasgow/

Major new development could transform Sauchiehall Centre - 3 December 2015

http://www.eveningtimes.co.uk/news/14120732.Major_new_development_could_transform_Sauchiehall_Centre/

Glasgow regeneration project wins top award - 5 December 2015

http://www.eveningtimes.co.uk/news/14126206.Glasgow_regeneration_project_wins_top_award/

Plans to overhaul Glasgow city centre site for births, deaths and marriages go on display - 7 December 2015

http://www.eveningtimes.co.uk/news/14127976.Plans_to_overhaul_Glasgow_city_centre_site_for__births__deaths_and_marriages_go_on_display/

Assemble wins Turner Prize 2015 at Glasgow's Tramway - 7 December 2015

http://www.eveningtimes.co.uk/news/14129801.Assemble_wins_Turner_Prize_2015_at_Glasgow_s_Tramway/

A new £30m hotel on the banks of the River Clyde will create 60 jobs - 9 December 2015

http://www.eveningtimes.co.uk/news/14132990.A_new___30m_hotel_on_the_banks_of_the_River_Clyde_will_create_60_jobs/

Unveiled: The huge machine that will drill Scotland's biggest ever waste water tunnel right here in Glasgow - 9 December 2015

http://www.eveningtimes.co.uk/news/14132988.Unveiled__The_huge_machine_that_will_drill_Scotland_s_biggest_ever_waste_water_tunnel_right_here_in_Glasgow/

Thousands to benefit from £120million investment in drinking water network - 18 December 2015

http://www.eveningtimes.co.uk/news/14154286.Thousands_to_benefit_from___120million_investment_in_drinking_water_network/

£67m pledged to help fund major infrastructure projects - including a Glasgow Airport link - 15 December 2015

http://www.eveningtimes.co.uk/news/14147184.__67m_pledged_to_help_fund_major_infrastructure_projects___including_a_Glasgow_Airport_link/

Minister visits new homes in first stage of Sighthill transformation - 17 December 2015

<http://www.scottishhousingnews.com/7007/minister-visits-new-homes-in-first-stage-of-sighthill-transformation/>

Major renovation saves iconic Glasgow building for future generations - 21 December 2015

<http://www.scottishhousingnews.com/7088/major-renovation-saves-iconic-glasgow-building-for-future-generations/>

Before and after: The radical transformation of one of Glasgow's housing schemes - 4 January 2016

http://www.eveningtimes.co.uk/news/14179616.Before_and_after__The_radical_transformation_of_one_of_Glasgow_s_housing_schemes/

Coen Brothers movie starring George Clooney to open Glasgow's Film Festival - 6 January 2016

http://www.heraldscotland.com/news/homenews/14183655.Coen_Brothers_movie_starring_George_Clooney_to_open_Glasgow_s_Film_Festival/

Glasgow nightclub becomes first to pay Living Wage - 6 January 2016

http://www.eveningtimes.co.uk/news/14184583.Glasgow_nightclub_becomes_first_to_pay_Living_Wage/

£10.6m district heating scheme to tackle fuel poverty in Glasgow - 8 January 2016

<http://www.scottishhousingnews.com/7241/10-6m-district-heating-scheme-to-tackle-fuel-poverty-in-glasgow/>

Glasgow Airport aims for busiest-ever year in 2016, expecting to beat 2006 record - 11 January 2016

http://www.heraldsotland.com/business/14196781.Glasgow_Airport_aims_for_busiest_ever_year_in_2016__expecting_to_beat_2006_record/

Merchant City incubator to deliver £53m economic boost - 13 January 2016

http://www.heraldsotland.com/business/14199471.Merchant_City_incubator_to_deliver___53m_economic_boost/

Report: Glasgow ranks third for UK regional commercial property investment - 12 January 2016

<http://www.dailyrecord.co.uk/business/business-property/report-glasgow-ranks-third-uk-7164646>

Bid to bring European Athletics Indoor Championship to Glasgow - 13 January 2016

<http://www.bbc.co.uk/sport/athletics/35308141>

Glasgow at forefront of adding green buses to fleets - 13 January 2016

<http://www.scotsman.com/news/transport/glasgow-at-forefront-of-adding-green-buses-to-fleets-1-4000216>

Surge in premium office lettings in Glasgow - 19 January 2016

<http://www.heraldsotland.com/business/14213191.display/>

£60m completion of motorway link road in Glasgow's east end given green light - 18 January 2016

http://www.heraldsotland.com/news/14210752.__60m_completion_of_motorway_link_road_in_Glasgow_s_east_end_given_green_light/

Gymnastics stars to shine again in Glasgow - 19 January 2016

http://www.eveningtimes.co.uk/news/14215316.Gymnastics_stars_to_shine_again_in_Glasgow/

Cycling scheme to tackle city's poor health record - 20 January 2016

http://www.eveningtimes.co.uk/news/14216442.Cycling_scheme_to_tackle_city_s_poor_health_record/

Fashion legend Paul Smith in Glasgow to launch new exhibition- 20 January 2016

http://www.eveningtimes.co.uk/news/14216449.Fashion_legend_Paul_Smith_in_Glasgow_to_launch_new_exhibition/

Glasgow's In-Bru carnival is a record breaker - 20 January 2016

http://www.eveningtimes.co.uk/news/14217109.Glasgow_s_In_Bru_carnival_is_a_record_breaker/

Glasgow leading the way in welcoming Roma population - 21 January 2016

http://www.eveningtimes.co.uk/news/14220077.Glasgow_leading_the_way_in_welcoming_Roma_population/

Glasgow leading the way in the world of outdoor arts - 27 January 2016

http://www.heraldscotland.com/news/14232694.Glasgow_leading_the_way_in_the_world_of_outdoor_arts/

Glasgow's big big hole in the ground in Springburn - 28 January 2016

http://www.eveningtimes.co.uk/news/14236191.Glasgow_s_big_big_hole_in_the_ground_in_Springburn/

Turner Prize show attracts a record 75,000 visits to Glasgow's Tramway - 29 January 2016

http://www.heraldscotland.com/news/14238845.Turner_Prize_show_attracts_a_record_75_000_visits_to_Glasgow_s_Tramway/?ref=rss

Glasgow bid to turn city into "mini Holland" with plans for £12million cycle scheme - 30 January 2016

http://www.eveningtimes.co.uk/news/14241892.Glasgow_bid_to_turn_city_into__quot_mini_Holland__quot__with_plans_for__12million_cycle_scheme/

Figures show SSE Hydro is the third busiest venue in the world - 1 February 2016

http://www.eveningtimes.co.uk/news/14244973.Figures_show_SSE_Hydro_is_the_third_busiest_venue_in_the_world/

The Quay in Glasgow to get £1million overhaul - 2 February 2016

http://www.eveningtimes.co.uk/news/14246359.__1m_revamp_at_the_Quay/

Glasgow building up to turning around derelict wasteland - 3 February 2016

<http://www.scotsman.com/regions/glasgow-strathclyde/glasgow-building-up-to-turning-around-derelict-wasteland-1-4019495>

£1bn expansion to transform university into a world-beater - 4 February 2016

<http://www.thetimes.co.uk/tto/news/uk/scotland/article4682431.ece>

Plans to transform Byres Road with greenspace and civic areas - 3 February 2016

<http://www.scotsman.com/regions/glasgow-strathclyde/plans-to-transform-byres-road-with-greenspace-and-civic-areas-1-4020012>

Kelvin Hall transformation on target - 9 February 2016

<http://www.glasgowsouthandeastwoodextra.co.uk/news/local-headlines/kelvin-hall-transformation-on-target-1-4025069>

Plans unveiled to demolish Glasgow bus depot and build more than 100 homes, shops and drive-thru - 10 February 2016

http://www.eveningtimes.co.uk/news/14265454.Plans_unveiled_to_demolish_Glasgow_bus_depot_and_build_more_than_100_homes__shops_and_drive_thru/

George Square set to be transformed as Glasgow hosts Homeless World Cup - 15 February 2016

http://www.eveningtimes.co.uk/news/14278169.George_Square_set_to_be_transformed_as_Glasgow_hosts_Homeless_World_Cup/

SECC wins first Healthy Venue accreditation - 12 February 2016

<http://www.conference-news.co.uk/2016/02/secc-wins-first-healthy-venue-accreditation/>

Glasgow mural by artist Smug takes internet by storm - 17 February 2016

<http://www.scotsman.com/glasgow/glasgow-mural-by-artist-smug-takes-internet-by-storm-1-4033417>

Glasgow City Deal funding for drainage plan to allow building of 22,000 new homes - 17 February 2016

<http://www.scottishhousingnews.com/7926/glasgow-city-deal-funding-for-drainage-plan-to-allow-building-of-22000-new-homes/>

Thousands of dancers gear up for start of prestigious contest - 17 February 2016

http://www.eveningtimes.co.uk/news/14281924.Thousands_of_dancers_gear_up_for_start_of_prestigious_contest/

New platform for rock photos at Glasgow Central station - 17 February 2016

<http://www.thenational.scot/news/new-platform-for-rock-photos-at-glasgow-central-station.13821>

New platform for rock photos at Glasgow Central station - 22 February 2016

http://www.heraldscotland.com/news/14293590.Glasgow_to_host_European_Championships_in_2018/

New lease of life promised for Shawlands Arcade - 24 February 2016

<http://www.glasgowsouthandeastwoodextra.co.uk/news/local-headlines/new-lease-of-life-promised-for-shawlands-arcade-1-4037036>

Glasgow South Side road to close for a year as work to prepare £100million tunnel gets underway - 26 February 2016

http://www.eveningtimes.co.uk/news/14301236.Glasgow_South_Side_road_to_close_for_a_year_as_work_to_prepare___100million_tunnel_gets_underway/

From Maryhill to Mars: Glasgow wins Space Agency funding - 24 February 2016

<http://www.scotsman.com/future-scotland/tech/from-maryhill-to-mars-glasgow-wins-space-agency-funding-1-4037288>

NEW 20mph zone for the city centre - 25 February 2016

http://www.eveningtimes.co.uk/news/14301181.NEW_20mph_zone_for_the_city_centre/

Glasgow history spanning 60 years celebrated in new embroidery exhibition - 26 February 2016

http://www.eveningtimes.co.uk/news/14304239.Glasgow_history_spanning_60_years_celebrated_in_new_embroidery_exhibition/

Glasgow City Marketing Bureau scoops industry award for 10th year in a row - 1 March 2016

<http://www.thenational.scot/business/glasgow-city-marketing-bureau-scoops-industry-award-for-10th-year-in-a-row.14432>

Glasgow in the running to be named top sports city in the world - 29 February 2016

http://www.eveningtimes.co.uk/news/14308455.Glasgow_in_the_running_to_be_named_top_sports_city_in_the_world/

Glasgow sets sights on becoming country's cycling capital - 4 March 2016

<http://www.thenational.scot/news/glasgow-sets-sights-on-becoming-countrys-cycling-capital.14590>

The Barras really will be better: Report claims new £27m investment to transform it into Glasgow's cultural and events quarter - 4 March 2016

<http://www.dailyrecord.co.uk/news/scottish-news/barras-really-better-report-claims-7492730>

New gallery space to open at People's Palace in Glasgow - 8 March 2016

<http://www.bbc.co.uk/news/uk-scotland-glasgow-west-35755541>

Which part of Glasgow has been named the hippest place to live in Britain? - 14 March 2016

http://www.eveningtimes.co.uk/news/14342131.Which_part_of_Glasgow_has_been_named_the_hippest_place_to_live_in_Britain/

Clyde Gateway development awarded £3m of government funding - 14 March 2016

<http://www.scottishconstructionnow.com/11312/clyde-gateway-development-awarded-3m-of-government-funding/>

New 30million housing investment for Glasgow community - 16 March 2016

http://www.eveningtimes.co.uk/news/14346026.Glasgow_community_gets___30m_investment_programme/

Plans unveiled for 1,400 homes by the banks of two rivers in Glasgow - 14 March 2016

http://www.eveningtimes.co.uk/news/14343359.Plans_unveiled_for_1_400_homes_by_the_banks_of_two_rivers_in_Glasgow/?ref=arc

'World's oldest comic' going on show in Glasgow - 17 March 2016

<http://www.bbc.co.uk/news/uk-scotland-35831797>

'World's oldest comic' going on show in Glasgow - 20 March 2016

<http://www.independent.co.uk/arts-entertainment/art/features/how-glasgow-became-an-art-capital-a6939241.html>

Remains of ancient Partick Castle uncovered in Glasgow - 22 March 2016

<http://www.scotsman.com/heritage/remains-of-ancient-partick-castle-uncovered-in-glasgow-1-4078995>

RCS ranked sixth best in the world for performing arts - 22 March 2016

<http://www.bbc.co.uk/news/uk-scotland-glasgow-west-35876864>

Glasgow Harbour will bring 'the West End back to the Clyde' - 25 March 2016

<http://www.scotsman.com/business/companies/glasgow-harbour-will-bring-the-west-end-back-to-the-clyde-1-4082594>

Kelvingrove summer concerts to star Van Morrison, Idlewild, Primal Scream, Will Young and more - 31 March 2016

http://www.eveningtimes.co.uk/news/14390577.Kelvingrove_summer_concerts_to_star_Van_Morrison__Idlewild__Primal_Scream__Will_Young_and_more/?ref=mmpg

9. MAILING LIST AND SURVEY

To subscribe to the Health Check please send an email to the address below with your contact details. You can also access the latest and archived issues at:

<http://www.glasgow.gov.uk/index.aspx?articleid=2977>.

For any further information please contact:

City Centre Regeneration

Housing and Regeneration Services

Glasgow City Council

Development and Regeneration Services

231 George Street

GLASGOW

G1 1RX

0141-287-6540

citycentreissues@glasgow.gov.uk
