

GLASGOW CITY COUNCIL
EDUCATION SERVICES

**THIS IS A FORMAL
CONSULTATIVE
DOCUMENT**

PROPOSAL: TO OPEN A NEW GAELIC MEDIUM EDUCATION (GME) PRIMARY SCHOOL IN THE SOUTH WEST OF THE CITY AND TO DEFINE NEW CATCHMENT AREAS FOR PRIMARY-AGED CHILDREN ATTENDING GLASGOW GAELIC SCHOOL/SGOIL GHÀIDHLIG GHLASCHU AND GLENDALE GAELIC SCHOOL/BUNSGOIL GHÀIDHLIG GHLEANN DAIL AND THE NEW SCHOOL.

Schools	Ward(s)	Strategic Planning Area
Glasgow Gaelic School/Sgoil Ghàidhlig Ghlaschu	10	North West
Glendale Gaelic School/Bunsgoil Ghàidhlig Ghleann Dail	6	South
Gowanbank Primary School	3	South

REPORT BY EXECUTIVE DIRECTOR OF EDUCATION

This document has been issued by Glasgow City Council for consultation in terms of the Schools (Consultation) (Scotland) Act 2010, as amended.

The Ordnance Survey map data included within this document is provided by Glasgow City Council under licence from Ordnance Survey in order to fulfil its public function in relation to this public consultation. Persons viewing this mapping should contact Ordnance Survey Copyright for advice where they wish to licence Ordnance Survey mapping/data for their own use.

1 Background

- 1.1 In 1999 Glasgow opened its first primary GME provision. As the roll grew, it became necessary to relocate to a larger building, along with the addition of GME secondary education within the authority.
- 1.2 In August 2006, Glasgow City Council opened its first dedicated all-through GME school when the existing GME primary school relocated to the former Woodside Secondary in Berkeley Street.
- 1.3 The primary school roll has grown steadily since, and this is now reflected in the increased roll in the secondary GME provision on the campus.
- 1.4 In May 2016, GCC opened its second GME primary school at the Glendale Campus in the Pollokshields area of Glasgow. As a result, Glasgow now has two catchment areas identified in the city for primary GME provision.
- 1.5 GME is, without doubt, a success in the city. Bord na Gaidhlig launched its new plan in April 2017. Glasgow City Council will be producing a plan later this year which will have a strong focus on Education and the Community.
- 1.6 In March 2017, the Executive Director of Education took a paper to the Children and Young People's Policy Development Committee on the future of GME in the city. The Committee considered the paper which included an assessment of future demand and the outcome of engagement sessions held with parents and carers, staff and young people. The Committee agreed that the case was made for a third primary GME school in the city and asked the Executive Director to seek the permission of the Executive Committee to hold a consultation under the Schools (Consultation) (Scotland) Act 2010.
- 1.7 In April 2017, the Executive Committee agreed to a consultation under the Schools (Consultation) (Scotland) Act 2010. This paper sets out the proposal.

2 Assessing Demand for GME Provision

- 2.1 Demand for GME has risen steadily with a sharp increase in August 2016. Indications are that the demand for August 17 has not increased again; but has remained broadly the same from families resident in Glasgow.
- 2.2 Parents choose GME for a variety of reasons, this makes it challenging to assess demand accurately. We know from the families currently using the provision that less than 20% now come from a family where Gaelic is spoken as a first language.
- 2.3 With the primary provision growing, the secondary provision also needs to grow. In order to achieve this, there will be a need to reduce the numbers of pupils in primary at the Berkeley Street campus to allow the secondary to expand. In addition, there is a need to improve access to physical education facilities. The site was not designed for high numbers of pupils being transported, particularly younger pupils, and this will also require to be kept under review. There are between 120 and 130 applications across the two

schools for entry to P1 in August 2017. We know that neither school has the capacity to sustain this intake. We made the decision to take all Glasgow resident applicants for August 2017. This means unless a solution is found then we will have to significantly reduce the intake in August 2018 and beyond. Therefore the time we have available is too short to consider a new build establishment.

3. Options

- 3.1 At the engagement session held in November 2016, a number of parents expressed the view that their preference was to have a free-standing GME provision, where possible. Appendix A and B show where the pupils who currently attend GME primary schools live. It can be seen that there is a notable proportion who live in the south west of the city.
- 3.2 Our schools in the south west of the city do not have the capacity to use some of the classrooms to deliver GME or have the room within their grounds for additional classrooms to be sited.
- 3.3 In the Govan area, Cartvale Secondary School is located in a former primary school. Cartvale provides education for secondary-aged young people who experience social and emotional difficulties. During 2017/18, the younger pupils at Cartvale will be moving to enhanced provision which is being developed in two mainstream secondary schools which would free up capacity, but the school would not be totally empty in August 2018. It is the view of officers that it would not be appropriate to open new GME provision in the building while there were still secondary-aged young people being educated in it.
- 3.4 In the Crookston area, Howford Primary School is going to be moved into the new Gowanbank campus during 2017/18. However, the building is not in good condition and is beyond its serviceable life. A refurbishment project is unlikely to bring it back into A or B condition. We do not believe that investment in this building demonstrates best value for the Council.
- 3.5 We are currently constructing a new campus in the south west of the city which will make the current Gowanbank Primary School building surplus to requirements. This is a purpose-built primary school set in extensive grounds. Whilst in reasonably sound condition, it would benefit from investment works similar to those undertaken successfully in other establishments within the 4Rs refurbishment programme. This work could be carried out in the period between the current pupils transferring to their new campus (circa March 18) and the commencement of the August 2018 academic year.
- 3.6 As noted in 3.5, the current Gowanbank Primary School will become available in March 2018. The building is currently in C condition, however, is fundamentally sound and would benefit from investment works, such as new roof coverings, new windows, minor mechanical and electrical upgrading works and an internal refurbishment. The building was constructed in 1953 and comprises 9 classrooms, with ancillary accommodation such as offices, toilets,

gym hall, kitchen and dining, cloak spaces, etc. It sits within extensive grounds which are a mixture of good quality tarmac and soft landscaping. The grounds have been developed over the past few years and include some external play equipment and a “trim trail”. Areas of the grounds close to the front entrance of the school present excellent opportunities to extend the school at some point in the future should the school roll rise beyond its current capacity.

- 3.7 Given the need for the new GME school to be open in August 2018, the proposal to undertake refurbishment investment works in this building as soon as it becomes vacant in March 2018 represents the most achievable and best value option available.

4 Pupil numbers

- 4.1 The table below shows the numbers attending the two current GME primary schools as at the census in September 2016.

Gaelic Primary School Rolls as at School Census, September 2016

Establishment	P1	P2	P3	P4	P5	P6	P7	Grand Total
Bunsgoil Ghàidhlig Ghlaschu	92	73	79	78	60	49	62	493
Bunsgoil Ghàidhlig Ghleann Dail	37	24	16	14	10	7	-	108

- 4.2 As at May 2017, there are 87 prospective P1 children for Bunsgoil Ghàidhlig Ghlaschu and 38 for Bunsgoil Ghàidhlig Ghleann Dail (TBC). This would mean that in August 2017, the school rolls would be

Establishment	P1	P2	P3	P4	P5	P6	P7	Grand Total
Bunsgoil Ghàidhlig Ghlaschu	87	92	73	79	78	60	49	518
Bunsgoil Ghàidhlig Ghleann Dail	38	37	24	16	14	10	7	146

5 Details of the Proposal

- 5.1 It is proposed to establish a new primary GME school in the former Gowanbank Primary School. The location of the school is shown in Appendix C.
- 5.2 It is proposed to establish catchment areas for each of the schools as shown in Appendices C, D and E. The catchment areas have been chosen based on the pattern of enrolment to date and the capacity at each of the schools.

New Gaelic Primary School Catchment Area

Please refer to appendix C.

The proposed catchment area for the new Gaelic primary school will include the following local neighbourhood areas (or parts thereof) –

To the north of the River Clyde

Yoker/Scotstoun

Anniesland/Jordanhill/ Whiteinch - To the south of the railway line

To the south of the River Clyde

Greater Govan

Ibrox and Kingston- To the west of the Kingston Bridge and the M8

Bellahouston/Craigton/Mosspark

North Cardonald/Penilee

Crookston/South Cardonald

Corkerhill/North Pollok

Pollok

Priesthill/Househillwood

South Nitshill/Darnley

Arden/Carnwadric

Pollokshaws/Mansewood

Pollokshields West - To the south of Titwood Road

Shawlands/Strathbungo – **Excluding** the area to the east of Minard Road, the north of Pollokshaws Road from 540 Pollokshaws Road to 1034 Pollokshaws Road and south of the railway line.

Govanhill – to the south of Allison Street

Toryglen – **Excluding** the industrial area to the east of Aikenhead Road, to the north of Calder Street and to the west of Polmadie Road.

Langside /Battlefield

King's Park/ Mount Florida

Newlands/Cathcart

Croftfoot

Catchcart/Simshill

Castlemilk

Carmunnock

Bunsgoil Ghàidhlig Ghleann Dail Revised Catchment Area

Please refer to appendix D

The revised catchment area for Glendale Gaelic Primary school will include the following local neighbourhood areas (or parts thereof) –

To the south of the River Clyde

Ibrox/Kingston – to the east of the Kingston Bridge and the M8

Greater Gorbals

Pollokshields West – **Excluding** the area to the south of Titwood Road

Pollokshields East

Shawlands/Strathbungo - The area to the east of Minard Road, the north of Pollokshaws Road from 540 Pollokshaws Road to 1034 Pollokshaws Road and south of the railway line.

Govanhill – To the north of Alison Street.

Toryglen – The industrial area to the east of Aikenhead Road, to the north of Calder Street and to the west of Polmadie Road.

Bunsgoil Ghàidhlig Ghlaschu **Revised Catchment Area**

Please refer to Appendix E

The revised catchment area for Glasgow Gaelic Primary School will include the following local neighbourhood areas (or parts thereof) –

To the north of the River Clyde

Drumchapel
Blairdardie
Knightswood
Temple/Anniesland
Anniesland/Jordanhill/Whiteinch – To the north of the railway line
North Maryhill/Summerston
Kelvindale/Kelvinside
Hyndland/Dowanhill/Partick East
Broomhill/Partick West
Yorkhill/Anderston
Hillhead/Woodlands
Maryhill Road Corridor
Ruchill/Possilpark
Lambhill/Milton
Springburn
Sighthill/Roystonhill/Germiston
City Centre/Merchant City
Calton/Bridgeton
Parkhead/Dalmarnock
Denniston
Balornock/Barmulloch
Robroyston/Millerston
Blackhill/Hogganfield
Riddrie/Cranhill
Haghill/Carntyne
Tollcross/West Shettleston
Sprinboig/Barlanark
Ruchazie/Garthamlock
Easterhouse
Baillieston/Garrowhill
Mount Vernon/East Shettleston

5.3 Parents living in the new catchment areas who wish their child to attend GME provision not in their catchment area would require to use the placing request process to apply for a place. If they are granted a place then as with other placing requests they would become responsible for the transport.

5.4 We would propose to grow the new school over time with P1, P2 and P3 starting in August 2018. Children at those stages in August 2018 living in the

catchment area for the new school would be expected to transition to the new school.

- 5.5 Children living outwith Glasgow who attend using placing requests and wish to transfer to the new school would have to use a placing request.

6 Educational benefit

The children

- 6.1 Children and young people are proud of their schools and appreciate the wide range of opportunities they have to achieve, such as through traditional music and sport.
- 6.2 By the time young people are in secondary school, they have developed fluency in Gaelic. In SQA examinations by the end of S5 and S6, Sgoil Ghàidhlig Ghlaschu performs much better than schools with similar characteristics. When Sgoil Ghàidhlig Ghlaschu was inspected in 2014, inspectors found the following key strengths.
- Children's and young people's fluency and their use of Gaelic in a range of learning situations
 - The positive ethos based on strong relationships, trust and mutual respect.
 - The support provided by all staff for meeting the needs of all children and young people.
 - The commitment of all staff and parents to developing and promoting the Gaelic language and bilingualism
- 6.3 The new school would enable the current children to continue to achieve very well. In their new school, the children would have a similar wide range of opportunities to achieve. The school would develop an ethos which would value the rich Gaelic culture which is so evident in the two current schools.
- 6.4 Should the proposal be agreed, we would require a new Headteacher for August 2018 along with high quality GME teachers. Some staff at the existing schools would transfer with the children which would provide continuity for the children's learning.

Parents, Carers and the Local Community

- 6.4 As indicated in section 1, Gaelic medium education is without doubt a success in the city. In the last few years, demand for GME has increased and we are no longer able to effectively meet demand.
- 6.5 Both current GME schools provide good quality education which is highly valued by parents and carers, who report a strong sense of belonging to the school. They are proud of the education being delivered in the schools.

- 6.6 There is Council GME early learning and childcare in Lyoncross Nursery, in Rowena Nursery and in the nursery class at Sgoil Ghàidhlig Ghlaschu. There is also early learning and childcare at Seudan Beaga. Lyoncross Nursery is around 2 miles from the proposed site and the new GME primary school would be well-placed to develop strong links with Lyoncross Nursery.
- 6.5 The Gowanbank Primary School site is extensive. There is very good playground space and grounds which could be developed for outdoor learning. There is also ample space to extend the school should this be required to meet future demand.
- 6.6 The provision of an additional school will assist the Council in meeting the increasing demand for GME. By placing it in the south west of the city there will be a reduction in the number of primary-aged children in both schools mostly from Sgoil Ghàidhlig Ghlaschu. This is necessary in order to allow the secondary school to extend as increased numbers transition from primary to secondary. It will also reduce the amount of transport needed for Sgoil Ghàidhlig Ghlaschu which would be a benefit for those attending the school and those who live around Berkeley Street.
- 6.7 The Council will be considering the expansion of GME nursery provision as part of its developing plans to meet the Scottish Government's plans for all three and four year olds to have access to 1140 hours of free early learning and childcare.
- 6.8 As the secondary department in Berkeley Street continues to expand it will be necessary to consider whether the nursery and primary departments can continue to remain on this site or whether a new GME provision needs to be developed in the north of the city. This would be subject to a future statutory consultation.

Other users

- 6.9 The new GME school would have facilities which would be made available to the community out-with core school hours.

Future users of the provision

- 6.10 The new school would improve the facilities in the area. There would be no detriment to future users of the provision.

Other schools/establishments in our authority

- 6.11 The proposal would not impact adversely on other schools. As already stated the new school would assist the Council in meeting future demand for GME.

Our assessment of any other likely effects of the proposal (if implemented)

- 6.12 The proposal would enable the Council to extend the secondary department at Sgoil Ghàidhlig Ghlaschu. The Council, with financial support from the Scottish Government, is improving the number of specialist classrooms at Sgoil Ghàidhlig Ghlaschu and plans are being developed to improve the provision for physical education.

7 Proposed Date For Implementation Of The Proposal

- 7.1 It is intended that, if agreed, the proposal would be implemented from August 2018.
- 7.2 The catchment area arrangements would be enacted for enrolment in November 2017.

8 Consultation Process

- 8.1 When a Council brings forward a proposal to open a school or change a catchment/delineated area and/or modify the guidelines in respect of the handling of placing requests there is a requirement to carry out a public consultation with the statutory framework defined by the Schools (Consultation) (Scotland) Act 2010.

- 8.2 The following arrangements will be put in place:

Consultation papers will be distributed to a wider range of stakeholder and interested parties including:

- Parents/carers/children of establishments affected by the proposals
- Staff
- Trade unions
- Bord na Gaidhlig
- Comann nam Pàrant
- Education Scotland
- Community Councils
- Area Partnerships
- Groups formed under Part 2 of the Local Government in Scotland Act 2003
- Other users of the school premises
- All Councils who currently send pupils to Sgoil Ghàidhlig Ghlaschu and all surrounding Councils
- Scottish Government
- A notice to advise of the consultation arrangements will be placed in the press
- A dedicated page on the Council web-site for both information and to enable interested parties to respond to the proposal

Contact Details

- Phone number: 0141 287 4327
- Address: Schools Consultation, 40 John Street, Glasgow, G1 1JL
- Web-site address: www.glasgow.gov.uk/schoolestateconsultations
- Email address: schoolconsultations@glasgow.gov.uk

The indicative timetable for the consultation is as per the table below:

Date	Action
20 April 2017	Executive Committee
22 May 2017	Start of Public Consultation period (advert)
6 June 2017	Public meeting - Sgoil Ghàidhlig Ghlaschu
20 June 2017	Public meeting - Bunsgoil Ghàidhlig Ghleann Dail
17 August 2017	Public meeting – Gowanbank Primary School
3 September 2017	End of Public Consultation period
8 September 2017	Information to Education Scotland (3 week period)
TBC	Consultation response document published at least 3 weeks prior to Executive Committee
TBC	Report to Executive Committee

Arrangements have been put in place to enhance the inclusiveness of the process, e.g. a plain English version and Gaelic version has been produced, crèche facilities will be made available for public meetings by prior request. In addition, a fluent Gaelic speaker will be there to represent council.

As stated above a public meeting will be held to discuss the proposals. Anyone wishing to attend the public meeting is welcome to do so. The meeting will be an opportunity for attendees to:

- Hear more about the proposal
- Ask questions about the proposal
- Have their views noted so that they can be taken into account as part of the consultation response process
- Ask officers about the various ways in which they can respond to the proposal

8.3 As with all consultations, we welcome alternative proposals from consultees.

9 Involvement of Education Scotland

9.1 A copy of the consultation proposal will be sent to Education Scotland by Education Services. They will also receive a copy of any written representations that are received by Education Services from any person during the consultation period or, if Education Scotland agree, a summary of them. They will also receive a summary of any oral representation made to Education Services at the public meeting and a copy of any other relevant documentation.

- 9.2 Education Scotland will then prepare a report on the educational aspects of the proposals no later than 3 weeks after Education Services has sent them all representations and documents as mentioned above.
- 9.3 In preparing their report, they may visit the affected establishments and make such reasonable enquiries of such people there, as they consider appropriate, and may make such reasonable enquiries of such other people as they consider appropriate.

10 Preparation of the Consultation Report

- 10.1 Education Services will review the proposals having regard to the Education Scotland report, responses to the consultation and oral representations made at the public meeting. Education Services will then prepare a consultation response report for consideration by the Council's Executive Committee.
- 10.2 This consultation response report will be published in electronic and printed formats and will be available on the Glasgow City Council website, Education Services, City Chambers East Building, 40 John Street, Glasgow G1 1JL and at the affected schools free of charge. All those who received direct notification of the consultation will be sent either a full or summary response document. All those who responded and provided contact details through the consultation process will also receive a copy of the full or summary response document as appropriate.
- 10.3 The response report will include a record of the total number of written representations made during the consultation period, a summary of the oral representations made at the public meeting, the council's response to the Education Scotland report and any other relevant information, including details of any alleged inaccuracies and how these have been handled. The report will also contain a statement explaining how it complied with the requirements to review the proposal in light of the Education Scotland report and representations (both oral and written) that is received. The Consultation Response Report will be published at least three weeks prior to the Executive Committee making a decision.
- 10.4 Reasonable requests for alternative forms of consultation papers or response documents will be accommodated wherever possible eg audio or by interpreted support. Should you wish a copy of this consultation paper or response documents in any other format please contact Education Services
- Online at schoolsconsultation@glasgow.gov.uk
 - At Education Services, City Chambers East Building, 40 John Street, Glasgow G1 1JL
 - Or by calling 0141 287 4327

11 Note on Corrections

- 11.1 If any inaccuracy or omission is discovered in this proposal document and/or during the consultation either by Education Services or any person, Education Services will determine if relevant information has been omitted or, if there has been an inaccuracy. Education Services will then take appropriate action, which may include the issue of a correction or the reissuing of the proposal document or the revision of the timescale for the consultation period as appropriate. In that event, relevant consultees and Education Scotland will be advised.

12 Conclusions from the Consultation Exercise

- 12.1 The conclusions and outcomes of the Consultation exercise will be presented to the Council's Executive Committee.

13 Scottish Ministers Call In

- 13.1 The Schools (Consultation) (Scotland) Act 2010 does not require referral to Scottish Ministers in cases other than closure of schools.

14 Equality Statement

- 14.1 An Equality Impact assessment will be undertaken as part of the consultation exercise to assess if the proposal discriminates against anyone on the basis of:

- Age
- Gender
- Religion
- Racial Group
- Disability
- Sexual Orientation




- 14.2 In carrying out the Equality Impact Assessment we will take account of (and address) any equality issues raised in written or oral representation made as part of the consultation process. The result of the Equality Impact Assessment will be included in the consultation response document and will also be available on the Glasgow City Council website.



Appendix A

Glasgow Gaelic School (Primary)

Current Pupils & Catchment Area

-  Glasgow Gaelic School (Primary) Pupils (Census 2016)
-  Glasgow Gaelic School (Primary)
-  Glasgow Gaelic School (Primary) Catchment Area



Education Services

40 John Street
Glasgow G1 1JL

Executive Director
Maureen McKenna

0 625 1,250 2,500 3,750 5,000
Meters

Contains NRS data © Crown copyright and database right.2017
© Crown Copyright and database right 2017. All rights reserved. OS Licence No. 100023379
You are not permitted to copy, sub-license or sell any of this data to third parties in any form. 16/05/2017



Appendix B Glendale Gaelic Primary School Current Pupils & Catchment Area

- Glendale Gaelic Primary School Pupils (Census 2016)
- ◆ Glendale Gaelic Primary School
- ▣ Glendale Primary School Catchment Area



Education Services

40 John Street
Glasgow G1 1JL

Glasgow
CITY COUNCIL

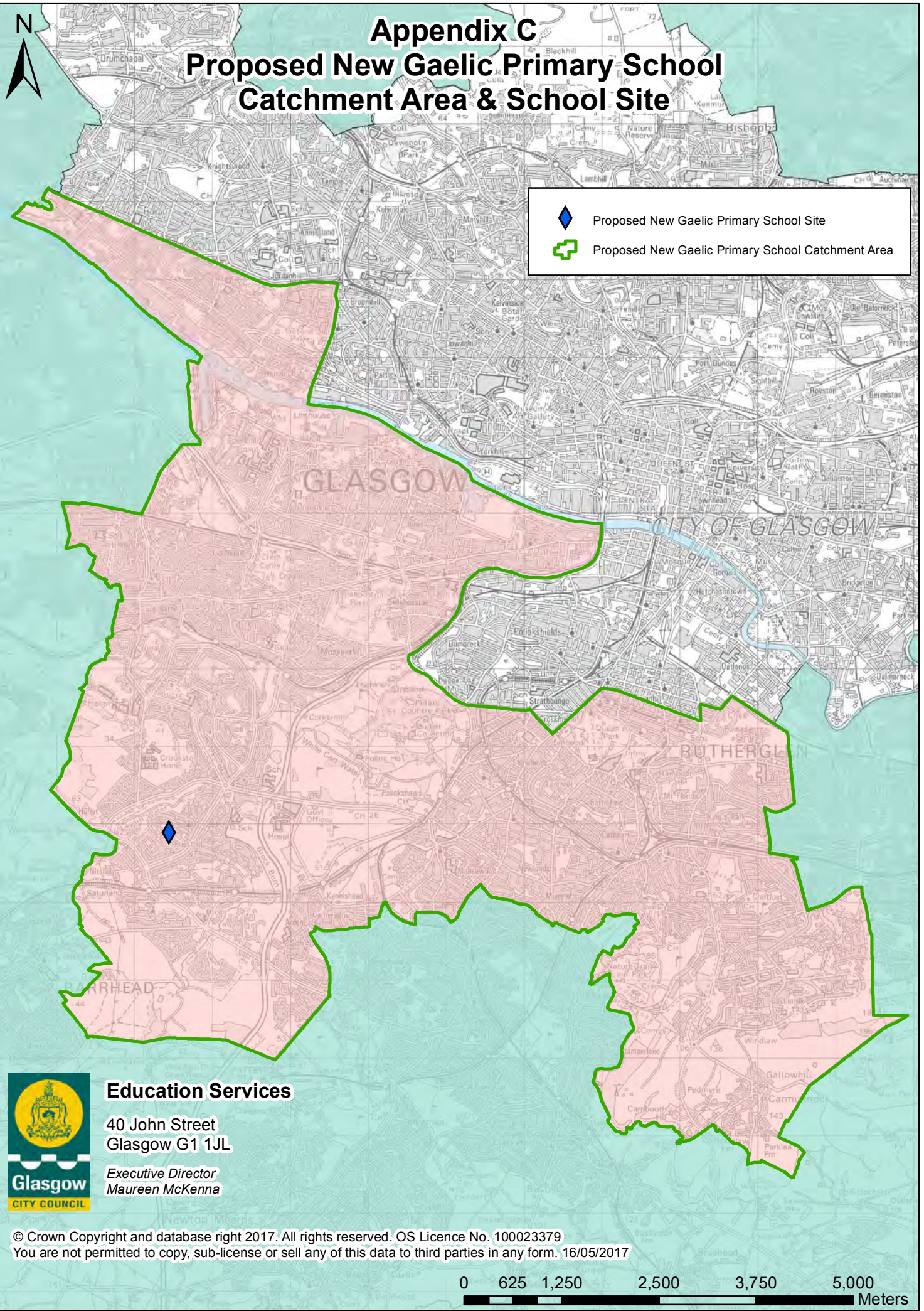
Executive Director
Maureen McKenna

Contains NRS data © Crown copyright and database right 2017
© Crown Copyright and database right 2017. All rights reserved. OS Licence No. 100023379
You are not permitted to copy, sub-license or sell any of this data to third parties in any form. 16/05/2017




0 375 750 1,500 2,250 3,000
Meters

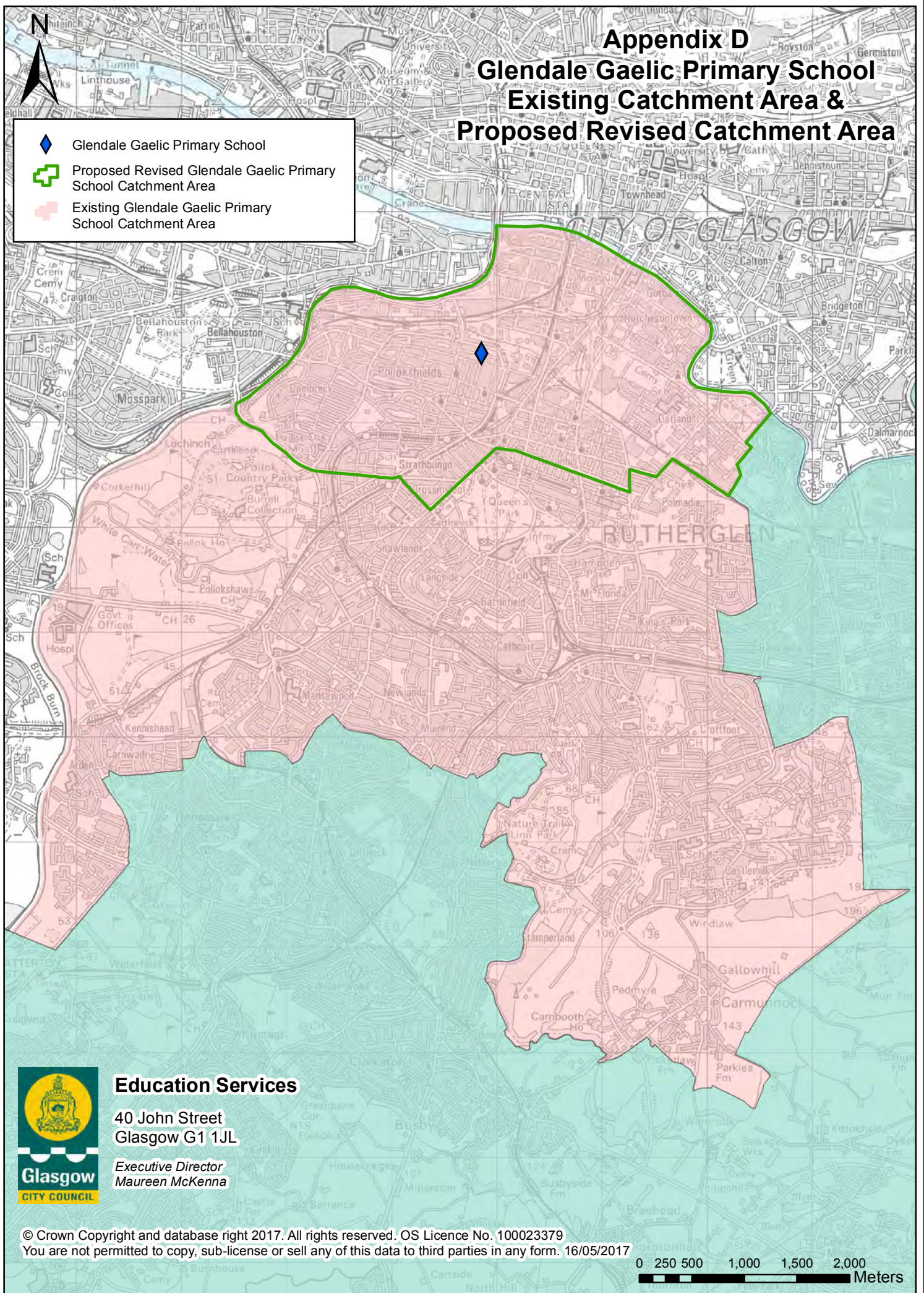
Appendix C

Proposed New Gaelic Primary School Catchment Area & School Site



Appendix D Glendale Gaelic Primary School Existing Catchment Area & Proposed Revised Catchment Area

-  Glendale Gaelic Primary School
-  Proposed Revised Glendale Gaelic Primary School Catchment Area
-  Existing Glendale Gaelic Primary School Catchment Area



Education Services

40 John Street
Glasgow G1 1JL

Executive Director
Maureen McKenna



Appendix E

Glasgow Gaelic School (Primary)

Existing Catchment Area & Proposed Revised Catchment Area

-  Glasgow Gaelic School (Primary)
-  Proposed Revised Glasgow Gaelic School (Primary) Catchment Area
-  Existing Glasgow Gaelic School (Primary) Catchment Area



Education Services

40 John Street
Glasgow G1 1JL

Executive Director
Maureen McKenna

0 625 1,250 2,500 3,750 5,000
Meters

© Crown Copyright and database right 2017. All rights reserved. OS Licence No. 100023379
You are not permitted to copy, sub-license or sell any of this data to third parties in any form. 16/05/2017