



CITY CENTRE
MURAL TRAIL

THIS SPECIAL EDITION OF THE
CITY CENTRE MURAL TRAIL WAS

P R E S E N T E D
TO
BILLY CONNOLLY

ON THE
5TH JUNE 2017

TO MARK HIS
75TH
BIRTHDAY

Also the creation of three special
commemorative murals of him based on original
works by world renowned artist's John Byrne,
Racheal MacLean and Jack Vettriano.

L X X V

THE STREET MURALS ARE HELPING TO
REJUVENATE STREETS AND REVITALISE
BUILDINGS AND VACANT SITES THAT
LOOK A BIT TIRED...

REINCARNATING
THEM AS
BEAUTIFUL
PIECES OF PUBLIC
STREET ART

The murals are having a major impact on our city
centre by creating splashes of colour and unique art
installations which brighten up lanes and streets.

As a further extension of the City Centre Mural Trail,
a new web-based application has been developed.
Based on the ever popular booklets, this up-to-date
online resource will allow visitors access to further
project-related information and a wide range of
images never previously made available. It can be
accessed via the following link:

WWW.CITYCENTREMURALTRAIL.CO.UK

or via the QR code:



IN 2014, THE CITY CENTRE MURAL TRAIL WAS
OFFICIALLY LAUNCHED TO PROMOTE THE
GROWING PORTFOLIO OF WORKS ADORNING
BUILDINGS WITHIN GLASGOW CITY CENTRE.

The murals showcase a diverse range of talent and
styles and are now recognised as unique pieces of art
in their own right.

They have generated hugely positive public and
business feedback while creating striking area features
that enhance the city centre environment.

Artists are encouraged to get involved in
this Glasgow City Council initiative through
application to the city centre Mural Fund,
details of which can be found via this link:
www.glasgow.gov.uk/citycentremuralfund

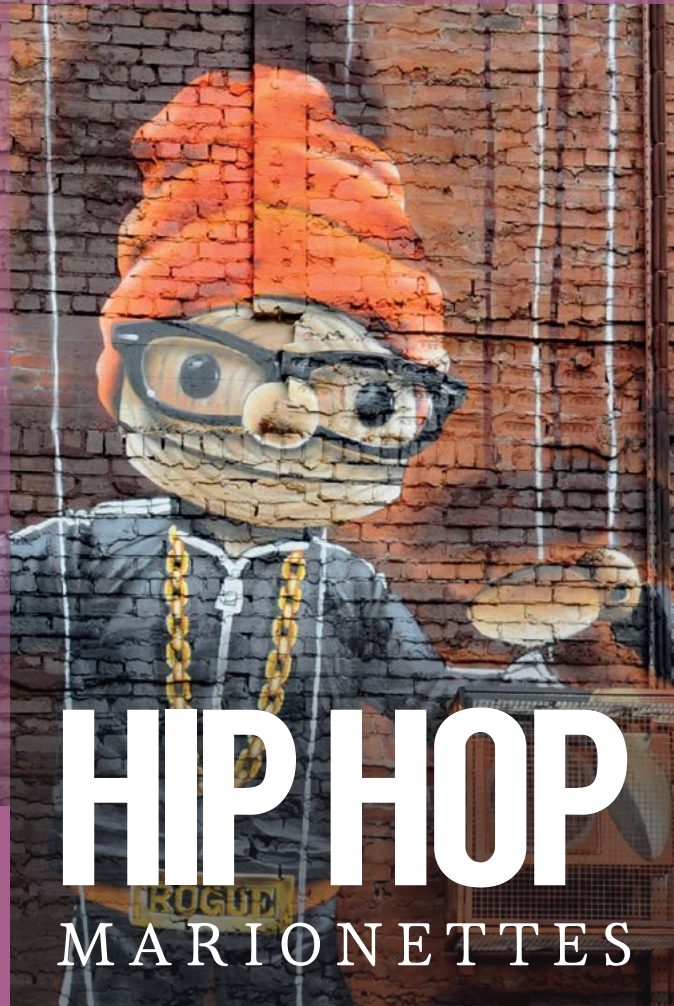


Glasgow is proud of its local artists and their
inspirational, colourful installations. We hope
you find the city centre Mural Map useful and
enjoy discovering the hidden public art. Maps
can also be downloaded via:
www.glasgow.gov.uk/citycentremurals



Please email citycentrestrategy@glasgow.gov.uk
with your comments.





HIP HOP MARIONETTES

01.

ROGUE-ONE | ARTPISTOL

ABOUT

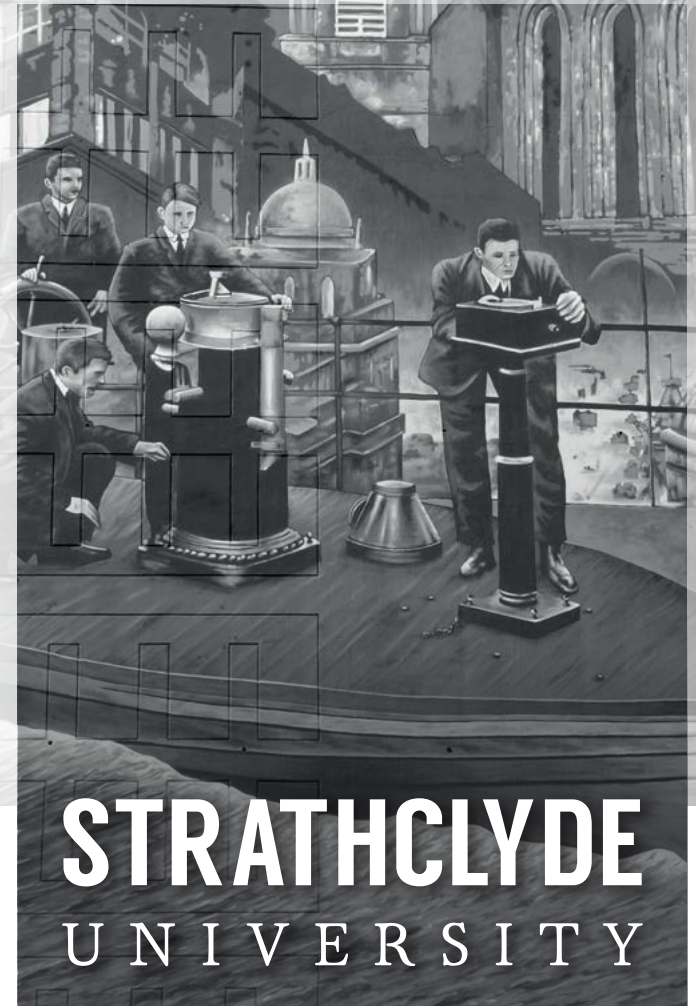
Working with Art Pistol, Rogue-One has added to his existing portfolio of murals with another quirky installation here on John Street.

Rogue described his inspiration:

“ We thought that an interesting concept would be to have body-poppers or break-dancers in puppet form. I took my influence from a Beastie Boys cover and a Run DMC picture.”

WHAT'S NEARBY?

This mural is in the heart of the city centre, adjacent to George Square – the principal civic square in Glasgow – and numerous transport links. Close by is [Glasgow City Chambers](#). Completed in 1888, the City Chambers has for over a hundred years been the headquarters of successive councils serving the City of Glasgow. Free tours of the Chambers are conducted twice per day at 10.30am and 2.30pm and will accommodate anyone walking in from the street to join the tour.



STRATHCLYDE UNIVERSITY

02.

ARTPISTOL | EJEK
ROGUE-ONE

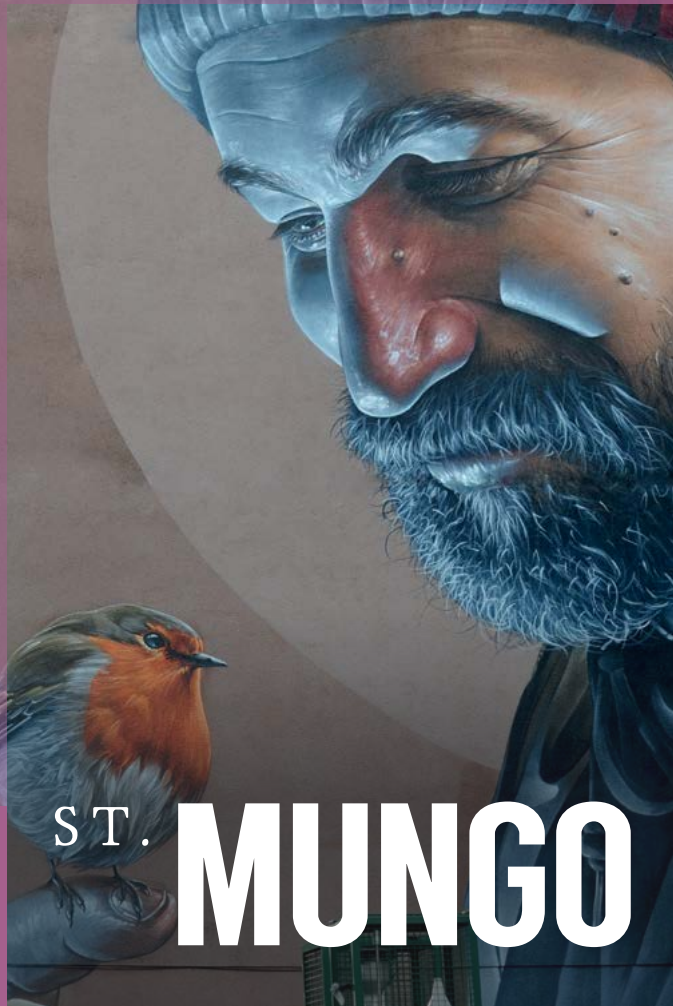
WHAT'S NEARBY?

Head along George Street towards High Street and the historic heart of Glasgow. From here is easy access to [Glasgow Cathedral](#), [St Mungo Museum of Religious Life and Art](#), and [Provand's Lordship](#) – Glasgow's oldest building.

ABOUT

The “Wonderwall” celebrates the people of the University of Strathclyde and their many significant achievements. Almost 200 metres long from start to finish and incorporating three 7-storey gables, the project was completed by Art Pistol with Rogue-One and Ejek.

We also see the Dansken equatorial telescope featured, which was once used to teach nautical astronomy. And the Land-Ship was a mock up navigation bridge on the roof of the School of Navigation in the Royal College, used to teach the principles of compass adjustment.



ST. MUNGO

03.
SMUG

ABOUT

Another addition by Smug to his growing portfolio of work, this mural was completed in February 2016.

Although officially untitled, it acquired its name during a period of massive social media interest when an image of this installation was shared approximately 1.5 million times within the first week.

WHAT'S NEARBY?

High Street is the historic heart of Glasgow. From here is easy access to [Glasgow Cathedral](#), [St Mungo Museum of Religious Life and Art](#), and [Provand's Lordship](#) – Glasgow's oldest building. Close by is [Glasgow City Chambers](#).





FELLOW GLASGOW RESIDENTS

04.
SMUG

WHAT'S NEARBY?

The Fellow Glasgow Residents Mural is in the heart of Glasgow's popular [Merchant City](#) where there is plenty to do for all including a huge variety of restaurants and a [Craft and Design Fair](#) each Sunday 12-6pm in [Merchant Square](#).



ABOUT

Before the gable end wall overlooking Ingram Street car park featured peeling paint and graffiti. Now thanks to the imagination of Smug it shows all types of animals found in Glasgow's parks and green space appearing through what looks like holes in the wall.

Will you view everything present in one visit?

We don't think so!



BADMINTON

BADMINTON

05.

GUIDO VAN HELTEN

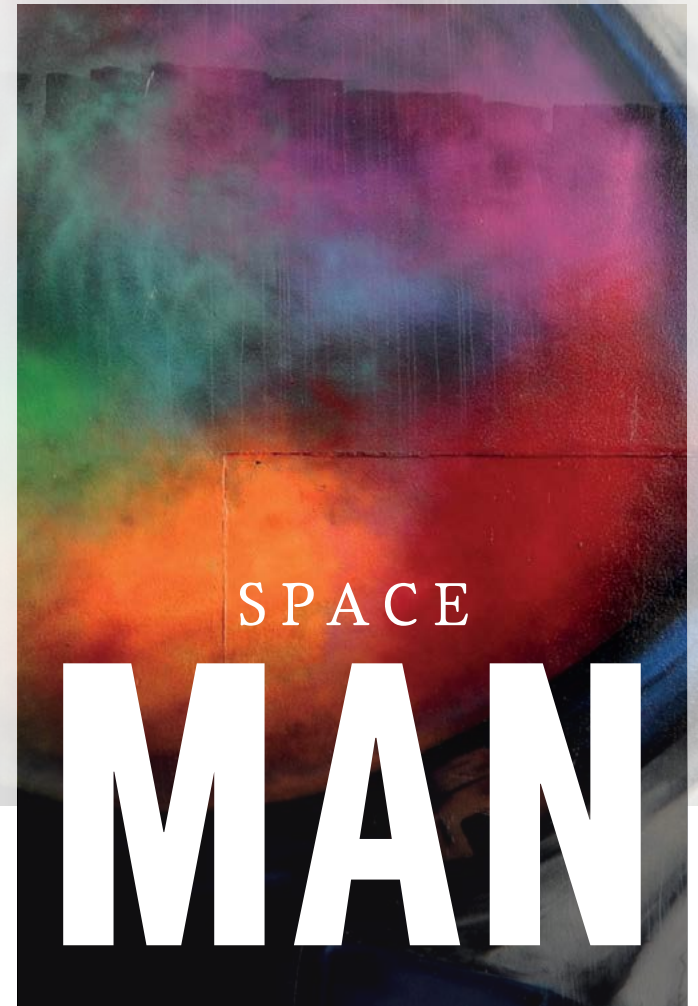
WHAT'S NEARBY?

In the heart of Glasgow's popular [Merchant City](#) where there is plenty to do for all including a huge variety of restaurants and a Craft and Design Fair each Sunday 12-6pm in [Merchant Square](#).

ABOUT

Installed as part of the promotional campaign for 2014 Commonwealth Games, this mural is part of a series depicting various sports. Completed by the same artist, the other murals were installed adjacent to Partick Train Station and represent hockey, netball and rugby.

The Badminton mural includes action shots of Scotland player Kieran Merrilees and conveys the speed of the game, as well as the athleticism required to succeed in such a competitive sport.



SPACEMAN

06.

RECOAT

WHAT'S NEARBY?

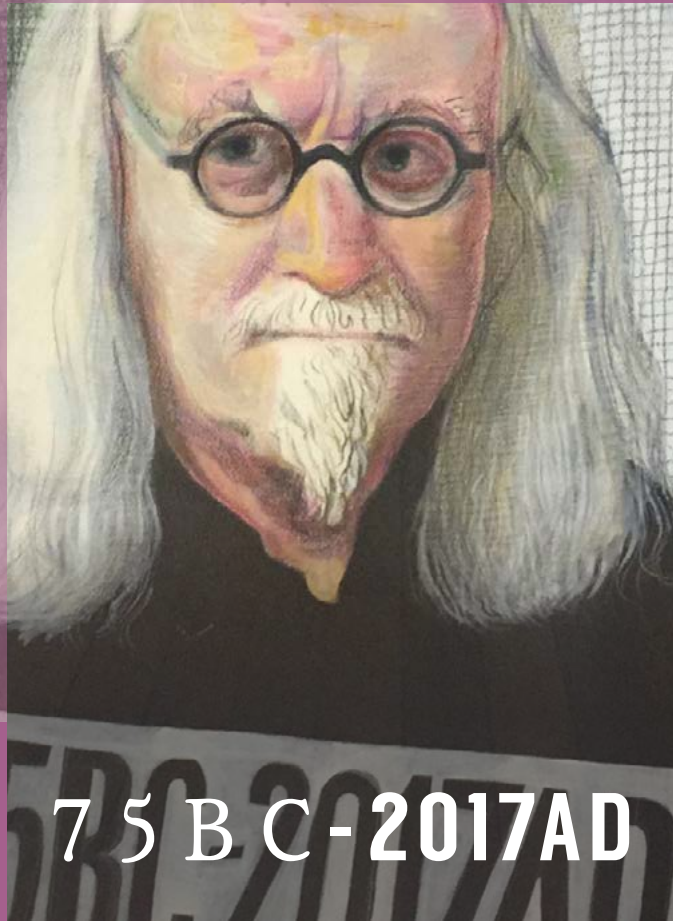
Close by is [The Tron](#), with its distinctive steeple and clock, one of Scotland's leading mid-scale producing and presenting theatres, set in the heart of [Glasgow's Merchant City](#). [Trongate 103](#), which houses galleries, workshops, artist studios and production spaces. Also nearby is [Tolbooth Clock Tower](#); all that remains of the original City Chambers, which was destroyed by fire in 1926.

ABOUT

This installation by Recoat and Ali Wylie brings colour to a city centre lane.

It has been informed by Pop, graphic novels, graphic design, and Japanese culture which you can see in the slick clean lines, colour choice and geometric patterned backgrounds.

BILLY CONNOLLY



BY JOHN BYRNE

07.

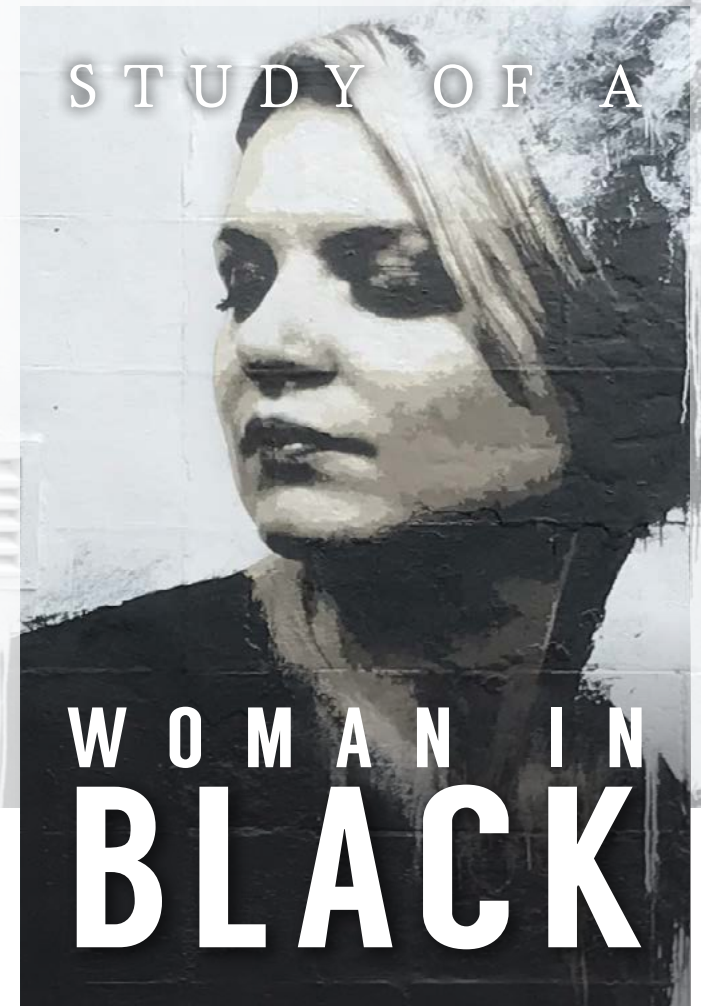
ROGUE-ONE |
ARTPISTOL

ABOUT

In commemoration of Billy Connolly's 75th birthday BBC Scotland commissioned three portraits of the comedian by top Scottish artists. In conjunction with Glasgow City Council representations of these original works were then installed around the city centre. Two of these works have been depicted as murals by Rogue One. This particular installation is based on John Byrne's "Billy Connolly". All three portraits were showcased, across the country, in a special BBC Scotland programme Billy Connolly: Portrait of a Lifetime and are now on display in the People's Palace.

WHAT'S NEARBY?

To the immediate West is the Style Mile's **St Enoch Centre** which welcomes over 19 million shoppers each year. Just to the East are the independent retailers around **Kings Court** and **Parnie Street**. To the North is the **Merchant City** area of Glasgow city centre. To the North-East is **High Street** and the historical heart of Glasgow.

STUDY OF
A WOMAN
IN BLACK

08.

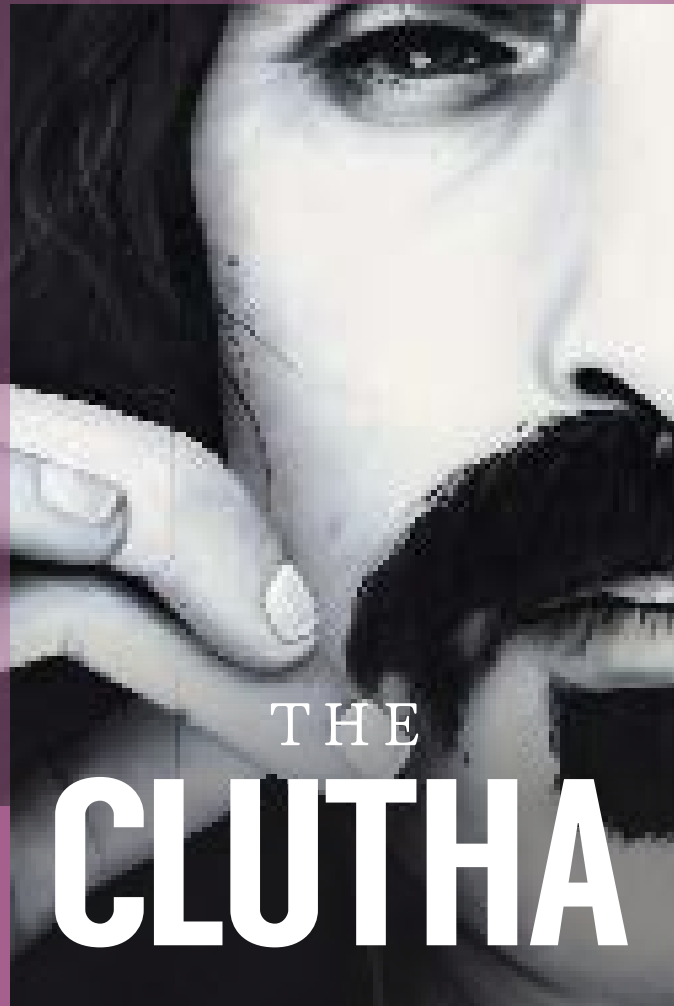
JAMES KLINGE

WHAT'S NEARBY?

To the West is the **Briggait**; a Victorian fish-market since converted and now used as an artists' studio and event space. To the North is the **Tolbooth Clock Tower**; all that remains of the original City Chambers, which was destroyed by fire in 1926. To the North-West are the independent retailers of **Kings Court** and **Parnie Street**. To the east is **St Andrews in the Square**, dating back to 1754 and described as one of the top six classical churches in the UK. Adjacent to the South-East is **Glasgow Green**, the oldest of the city's parks having been established by Royal Grant in the 15th century.

ABOUT

Now working under his own name, James Klinge (aka "Klingatron") continues his collaboration with Art Pistol whilst demonstrating the same attention to detail through his distinctive use of intricate stencil technique. However, the artist has chosen to progress his subject matter towards portraiture, a trend which has been showcased in a number of exhibitions around the world.



THE CLUTHA

ABOUT

Rogue-One, Art Pistol and Ejek have skilfully combined to create a mural which pays homage to the history of the area, as well as celebrating a variety of personalities who visited this iconic location, famous for its atmosphere and live music.

The landlord, Alan Crossan, said:

“The mural installed at the Clutha Bar in Glasgow has created worldwide interest and is fast becoming a tourist attraction. It will without doubt enhance the local area, brightening up an otherwise derelict building.”

THE CLUTHA

09.

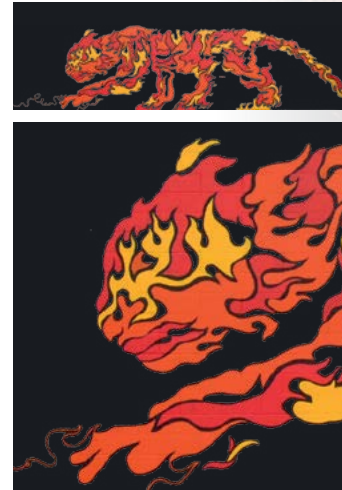
EJEK | ROGUE-ONE

WHAT'S NEARBY?

Just around the corner is *The Briggait* – a Victorian fish-market since converted and now used as an artists' studio and event space. Adjacent is the *Style Mile's St Enoch Centre* which welcomes over 19 million shoppers each year.

St Andrew's Cathedral, built in 1816, can be seen in a new light since its restoration, completed in April 2011.



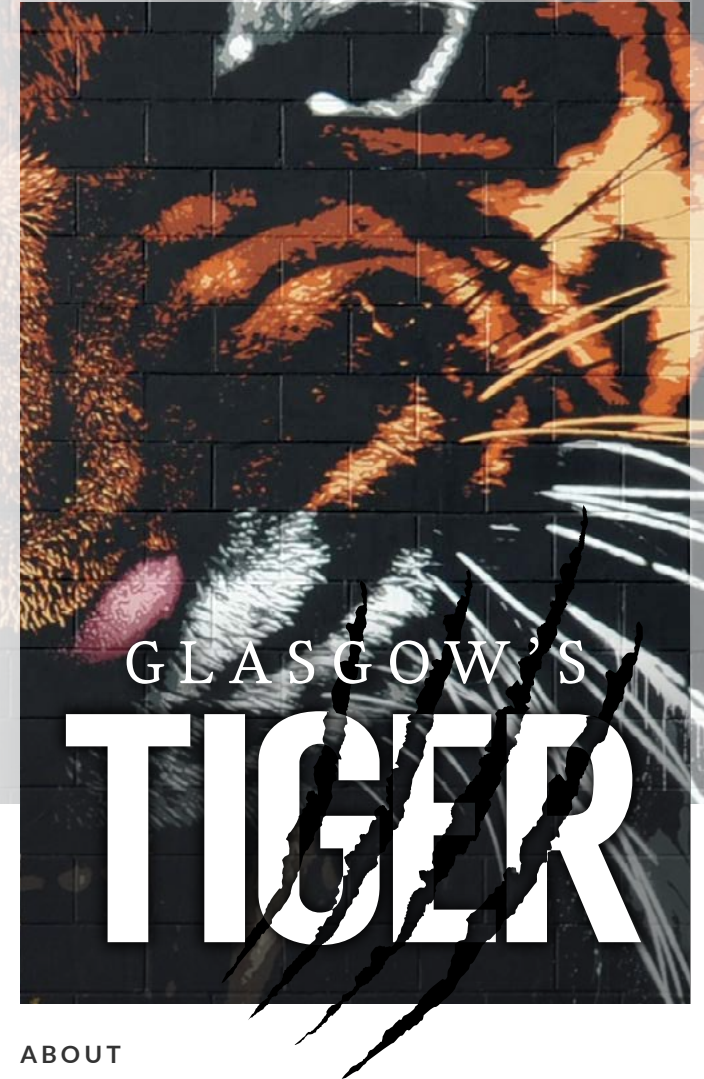


GLASGOW'S TIGER

10. KLINGATRON

WHAT'S NEARBY?

Adjacent to the [Clyde Walkway](#) at the [Broomielaw](#) this route provides access to some of Glasgow's most recognisable sites, including the [SECC](#), [Hydro](#), the [Clyde Auditorium](#) and the [Finnieston Crane](#). It offers access to [Central Station](#) and links with key cycle paths in the east, west and south of Glasgow.

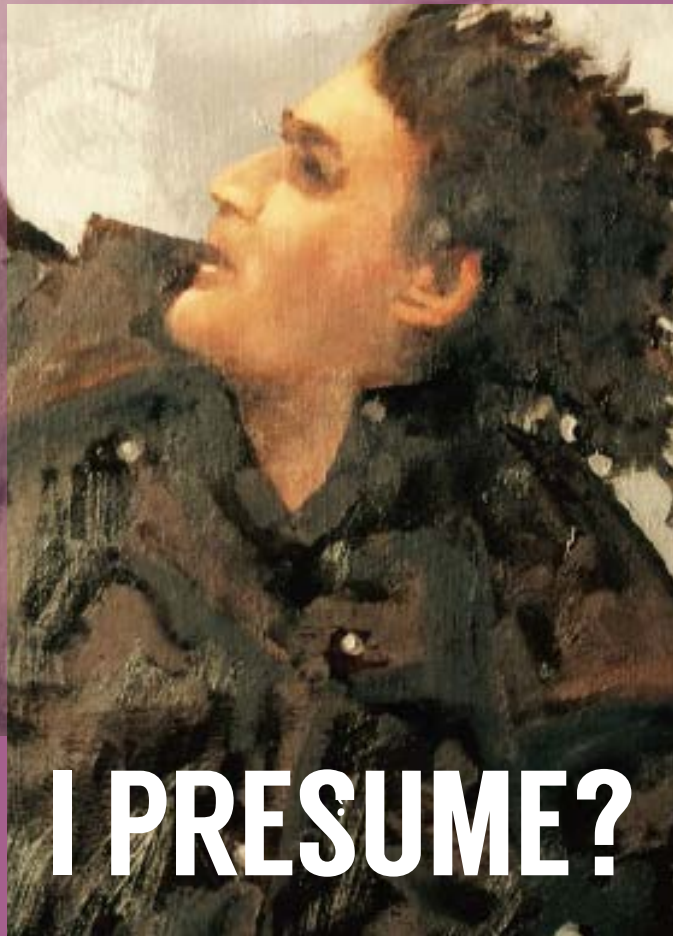


ABOUT

Klingatron has collaborated with Art Pistol to re-imagine the original tiger design previously installed at this location. Incorporating a high level of detail, and occupying the same high profile location adjacent to South Portland Suspension Bridge, this mural is becoming as iconic as its predecessor.

Dixon Street

DR. CONNOLLY



I PRESUME?

ABOUT

This is the second of the two commemorative Billy Connolly murals installed by Rogue One. It is a reproduction of the Jack Vettriano painting from the comedian's World Tour of Scotland series in 1994 titled "Dr Connolly I Presume" and features a windblown Billy on a storm-lashed coast near John O'Groats. A reproduction of the third portrait commissioned by BBC Scotland as part of the project, a Rachel Maclean digital print of Billy in a specially created outfit, has been installed in the Gallowgate via a vinyl transfer.

L X X V

DR CONNOLLY I PRESUME?

BY JACK
VETTRIANO

11.
ROGUE-ONE

WHAT'S NEARBY?

Immediately adjacent is [St Enoch Square](#), [St Enoch Subway](#) and the Style Mile's [St Enoch Centre](#) which welcomes over 19 million shoppers each year. To the west is [Central Station](#). Originally opened in 1879, it remains the busiest rail terminus in Scotland. Directly north is [Buchanan Street](#), a pedestrian precinct and the premier retail area within Glasgow's Style Mile.

Mitchell Street



THE WORLD'S MOST ECONOMICAL TAXI

12.
ROGUE-ONE

WHAT'S NEARBY?

This artwork is adjacent to [Glasgow's Style Mile](#) and within walking distance of [Central Station](#), [St Enoch Subway](#) and bus links. [The Gallery of Modern Art \(The GOMA\)](#) and [The Lighthouse](#) are nearby and also worth a visit.

ABOUT

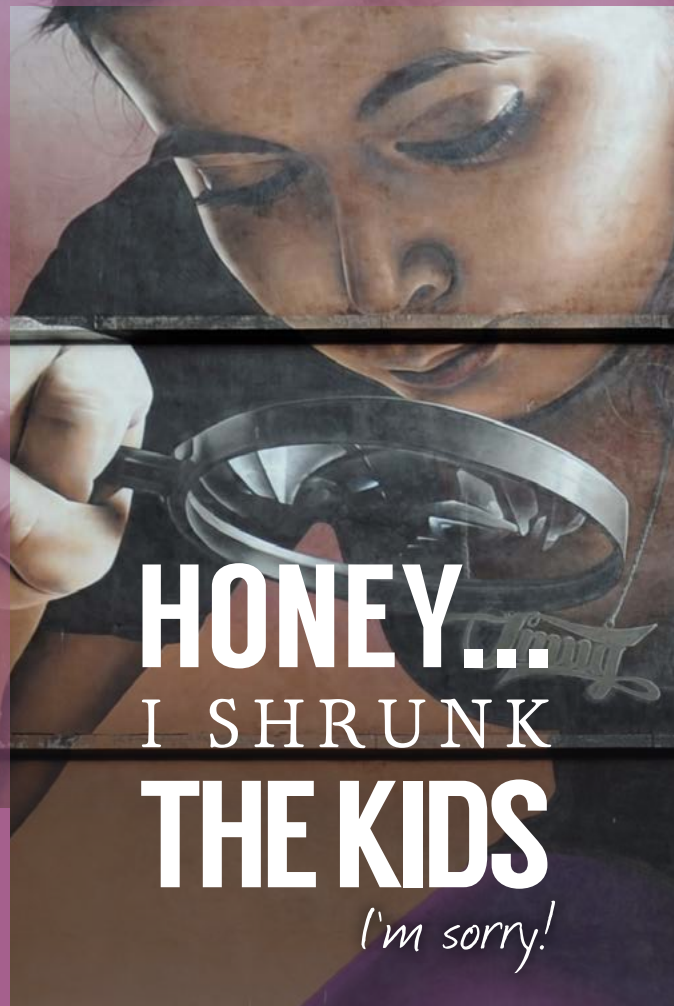
Do taxis float in Glasgow?

The attention to detail by artist Rogue-One in this mural makes it a must-visit location.

As the Artist said:

"Can't believe I painted a wall to look like a brick wall just because I wanted a brick wall!"

CITY CENTRE MURAL TRAIL



HONEY... I SHRUNK THE KIDS

I'm sorry!

HONEY...
I SHRUNK
THE KIDS

13.
SMUG

ABOUT

A huge piece of photo-realistic street art decorates the gable end of a building on Mitchell Street just off Argyle Street. The colossal image, by artist Smug (Sam Bates), depicts a girl with a magnifying glass who appears to be picking up an object off the street.

WHAT'S NEARBY?

This artwork is adjacent to [Glasgow's Style Mile](#) and within walking distance of [Central Station](#), [St Enoch Subway](#) and bus links. The [Gallery of Modern Art \(The GOMA\)](#) and [The Lighthouse](#) are nearby and also worth a visit.





WIND POWER

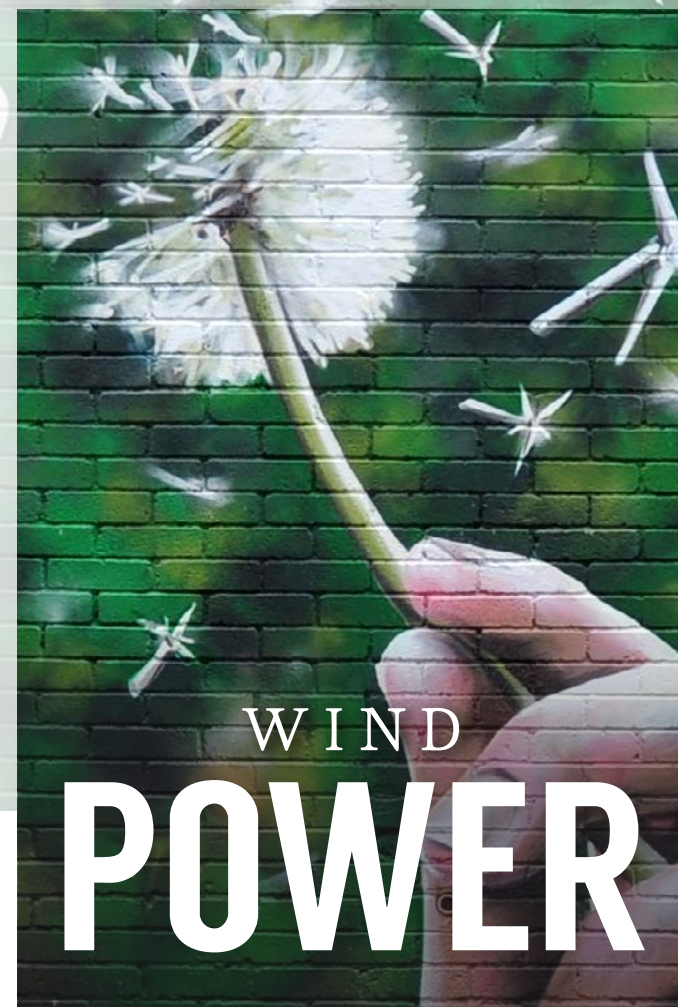
14.

ROGUE-ONE

WHAT'S NEARBY?

This artwork is adjacent to [Glasgow's Style Mile](#) and within walking distance of [Central Station](#), [St Enoch Subway](#) and bus links.

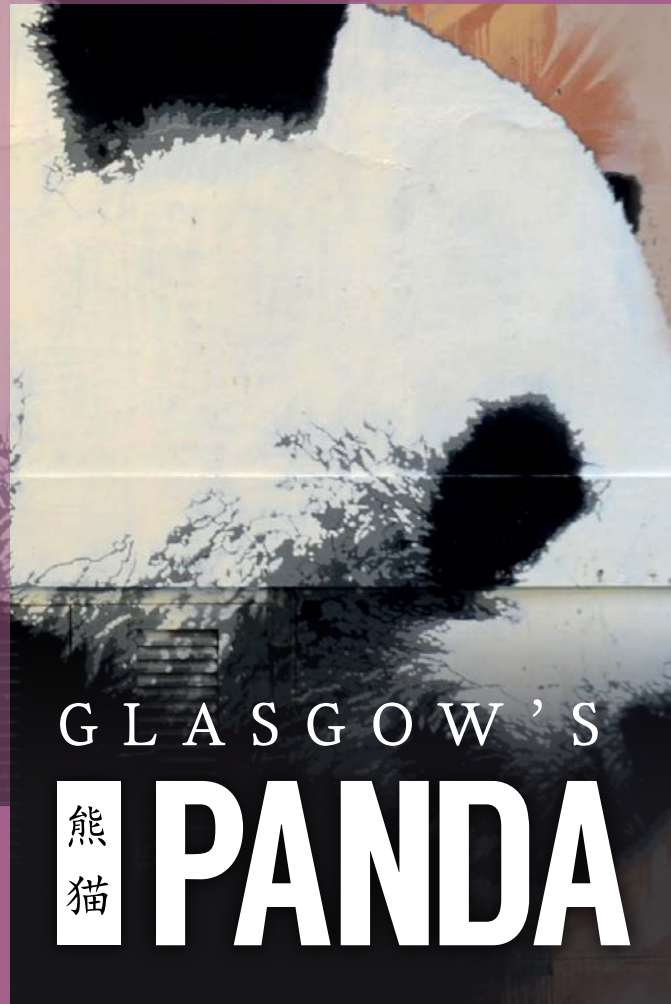
[The Gallery of Modern Art \(The GOMA\)](#) and [The Lighthouse](#) are nearby and also worth a visit.



WIND POWER

ABOUT

Another imaginative image from Rogue-One and Art Pistol, this mural was originally conceived as a live installation as part of the Doors Open Day 2014 event and celebrates the diversity of sustainable energy production within the Glasgow area and Scotland nationally.



ABOUT

Glasgow's very own Panda by Klingatron at home in Gordon Lane.

This Giant Panda is at home in one of the city's most interesting lanes, beside the bamboo gates of Gordon Lane.

GLASGOW'S PANDA

15.
KLINGATRON

WHAT'S NEARBY?

Directly opposite is [The Lighthouse](#), Scotland's Centre for Design and Architecture. This is a visitor centre, exhibition space and events venue situated in the heart of Glasgow.

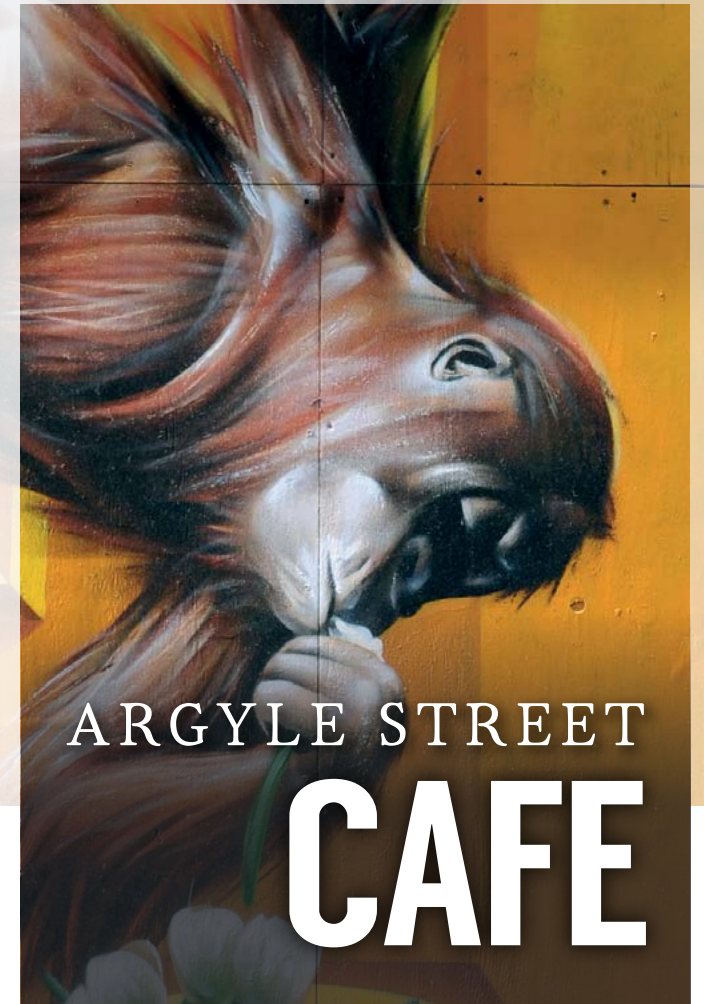
Formerly housing [The Glasgow Herald](#), The Lighthouse was the first public commission completed by [Charles Rennie Mackintosh](#), and is the perfect place to begin a Mackintosh tour of Glasgow.

ARGYLE STREET CAFE

16.
SMUG

WHAT'S NEARBY?

Within the heart of [Glasgow's Style Mile](#) this location provides easy access to numerous shops, bars and restaurants. [St Enoch Subway](#) is adjacent, just across the street. This would provide quick access to the [Hand Shadow Puppets mural](#) and [Cowcaddens Underground Station](#).

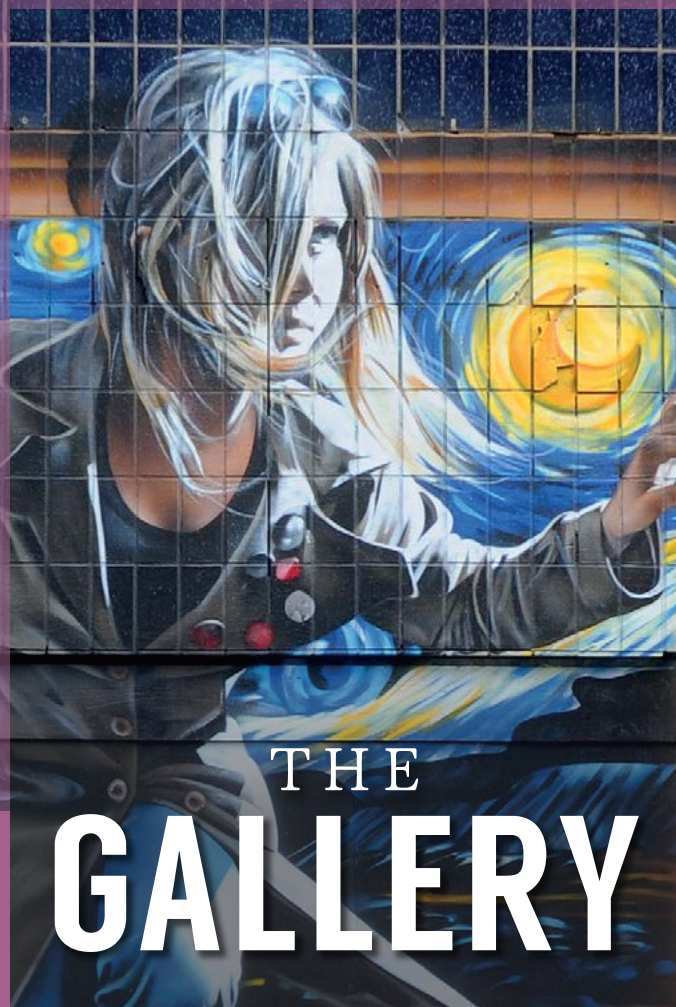


ABOUT

A refreshed site, Smug's reinterpretation of his previous installation is a fantastic twist to surprise the viewer.

As Smug described:

"I just didn't want to do the exact same piece, I didn't want to just touch it up and make it look prettier; didn't want to redo it and make it look a little bit better. So I decided just to give it a complete new revamp."



THE GALLERY

17.
SMUG

ABOUT

The boarded-up exterior of a former store on Argyle Street now features interpretations by Smug (Sam Bates) of famous paintings. Van Gogh's *Starry Night*, Munch's *The Scream*, Dali's melting clocks and Picasso's *Les Femmes d'Alger* are all on display.

His depiction of Da Vinci's *Mona Lisa* has already been dubbed "The Mona Lassie" by Glaswegians. It features a woman holding a can of Irn-Bru in front of a background of the Clyde Auditorium and Titan Crane.

WHAT'S NEARBY?

Argyle Street is a major thoroughfare and is the longest street in the city centre, running for 2.1 miles (3.4 km) out to the west. With nearby *Buchanan Street* and *Sauchiehall Street*, Argyle Street forms the main shopping artery of the city centre, also known as the *Style Mile*.



THE SWIMMER

18.
SMUG

WHAT'S NEARBY?

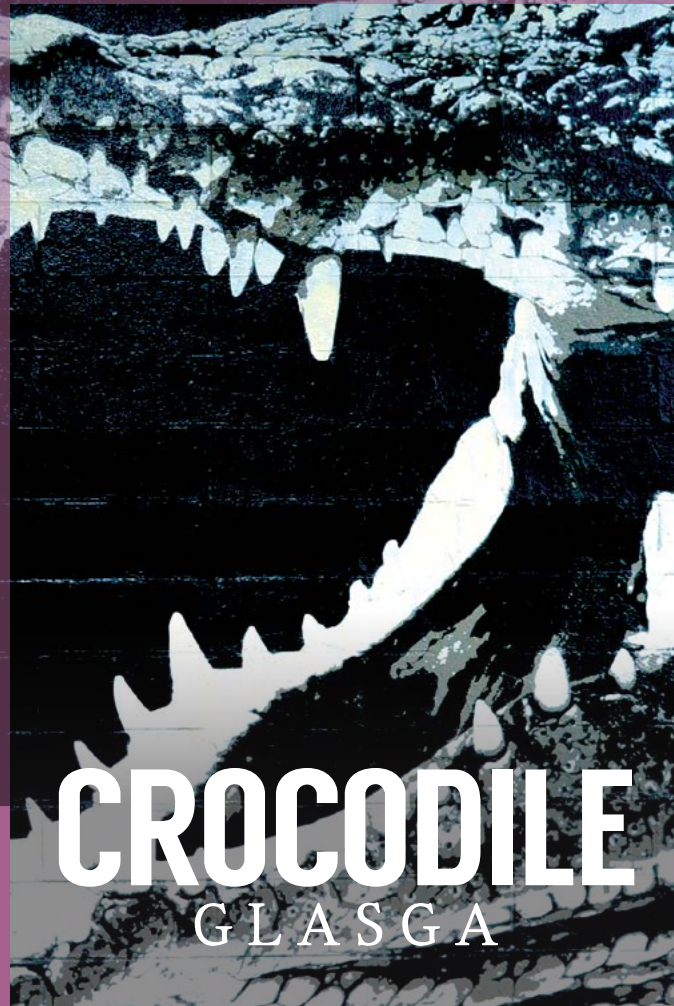
With easy access to the city centre and Anderston Train Station or head north to continue the trail onto the *Cowcaddens Underpass*. Adjacent to the *Clyde Walkway* at the Broomielaw this route provides access to some of Glasgow's most recognisable sites, including the *SECC*, *Hydro*, the *Clyde Auditorium* and the *Finnieston Crane*. It offers access to the *Central Station* and links with key cycle paths in the east, west and south of Glasgow.

ABOUT

One of the first murals to have been painted by Smug, this installation celebrates Glasgow's 2014 Commonwealth Games.

At the Kingston Bridge, a concrete wall is emblazoned with huge Commonwealth swimmers greeting drivers waiting at the traffic lights, created by Smug (Sam Bates).

A must see.



CROCODILE GLES GA

19.
KINGATRON

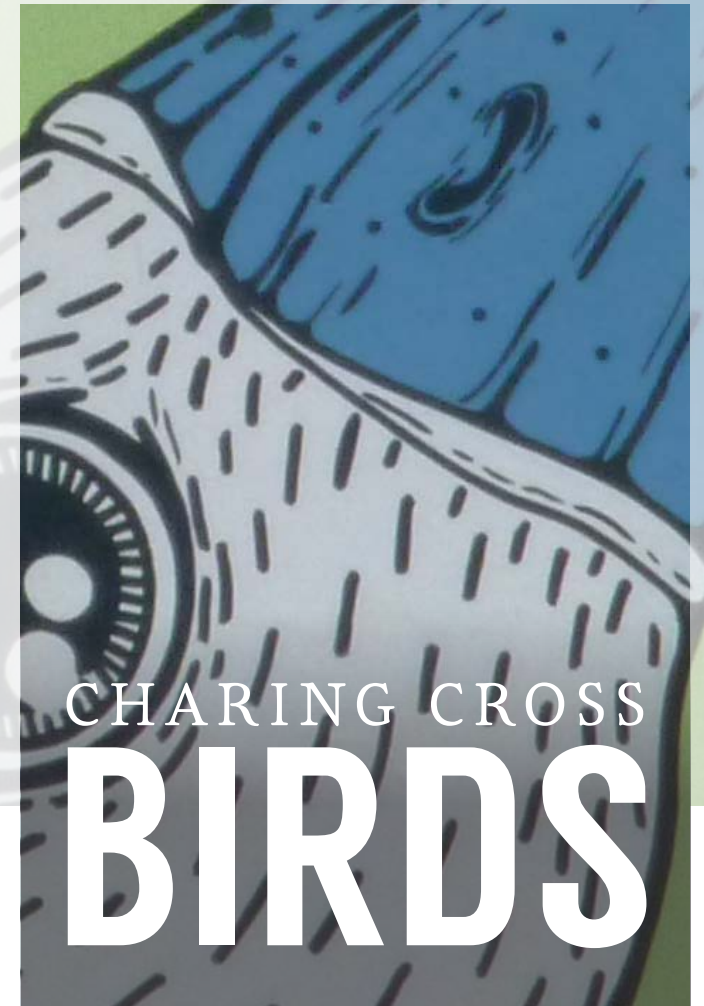
ABOUT

Utilising the same hyper-realistic graphical approach for which he is becoming famous, Klingatron has added to his growing menagerie with this Art Pistol collaboration.

The image is designed to work with the environment using a gap in the bricks for the eye slit, and areas of old brickwork amongst the scales. Like a giant crocodile hunting the concrete jungle, the full scale of this animal is only realised from a certain angle, and this wrap around corner effect was the main reason for choosing the cunning beast.

WHAT'S NEARBY?

To the south is the [Mitchell Library](#), one of Europe's largest libraries and centre of Glasgow's public library system. To the east is [Sauchiehall Street](#), one of Glasgow's most famous thoroughfares, boasting a wide variety of retail, entertainment and cultural destinations.



CHARING CROSS BIRDS

20.
ART PISTOL | LITTLE
BOOK TRANSFERS

WHAT'S NEARBY?

To the south is the [Mitchell Library](#), one of Europe's largest libraries and centre of Glasgow's public library system. To the east is [Sauchiehall Street](#), one of Glasgow's most famous thoroughfares, boasting a wide variety of retail, entertainment and cultural destinations.

ABOUT

Art Pistol and Little Book Transfers found the perfect location to continue LBT's 'STALK' series depicting birds, foliage and fruit together.

The graphic style and detailed illustration provides something a little different for Glasgow's walls.



HAND SHADOW PUPPETS

21. ROGUE-ONE

ABOUT

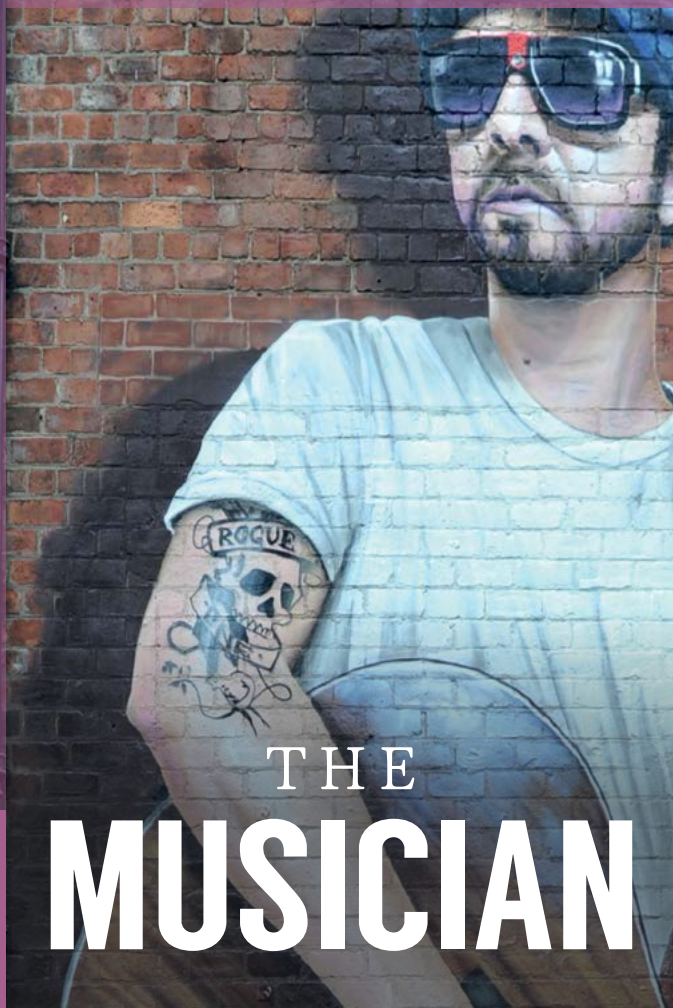
Let's assume that hand shadow puppetry, known to specialists as shadowgraphy or ombromanie, began with the caveman. Just assume. We were looking for something with a bit of wow factor to brighten up what was becoming an increasingly dingy, although very well used underpass. The concept was born, like a shadow from a flame, and off went Mr Rogue with the idea, a camera and a will to harass those he met into doing exactly that.

“Here, hold your hands up like this and make them look like a squirrel... no, straighten the pinky, I need bigger ears.”

WHAT'S NEARBY?

With great connections to the City via the subway system Cowcaddens has historically housed one of Glasgow's premier entertainment districts, with the [Theatre Royal](#) at the upper end of Hope Street, the massive Cineworld multi-storey cinema complex and the [Glasgow Royal Concert Hall](#) taking place at the top of West Nile Street.





THE MUSICIAN

ABOUT

Another Rogue-One collaboration with Art Pistol Projects, drawing upon the influences of the local live music scene, and helping add some colour and creativity to the city's resurgent lanes.

food bills by displaying a City Centre Mural Trail booklet or app. Close by is the world-famous **Sauchiehall Street** which has a vibrant night time entertainment zone to the west, as well as the **Style Mile** retail area which starts at the pedestrian precinct at Rose Street. Sauchiehall Street west has also been chosen as a demonstrator of the new **City Deal funded Avenues Strategy** due to be rolled out across the city centre.

THE MUSICIAN

22. ROGUE-ONE

WHAT'S NEARBY?

*This mural is directly adjacent to two bars renowned as live music venues; **Howlin Wolf**, and **Malone's**. Customers to Malone's can receive a 25% discount off*



THE GLASGOW CITY MURAL TRAIL MAP

LIST OF MURALS AND LOCATIONS WITH KEY

U UNDERGROUND STATION T TRAIN STATION B NEXTBIKE

1. HIP HOP MARIONETTES
2. STRATHCLYDE UNIVERSITY
3. ST. MUNGO
4. FELLOW GLASGOW RESIDENTS
5. BADMINTON
6. SPACEMAN
7. BILLY CONNOLLY: JOHN BYRNE
8. STUDY OF A WOMAN IN BLACK
9. THE CLUTHA
10. GLASGOW'S TIGER
11. DR CONNOLLY I PRESUME?
12. WORLD'S MOST ECONOMICAL TAXI
13. WIND POWER
14. HONEY I SHRUNK THE KIDS
15. GLASGOW'S PANDA
16. ARGYLE STREET CAFE
17. THE GALLERY
18. THE SWIMMER
19. GLASGOW'S CROCODILE
20. CHARING CROSS BIRDS
21. HAND SHADOW PUPPETS
22. THE MUSICIAN

L X X V

DUE TO DEVELOPMENT
OPPORTUNITIES, SOME OF OUR

ART INSTALLATIONS ARE OF A TEMPORARY NATURE

Glasgow City Council would like to thank the property
and business owners within the city centre for their
participation and providing permission for the murals to be
installed on their premises.

We would also like to thank the artists for sharing their
talents with a wider audience.

WWW.CITYCENTREMURALTRAIL.CO.UK

PEOPLE
MAKE
GLASGOW

