



SIGHTHILL COMMUNITY CAMPUS

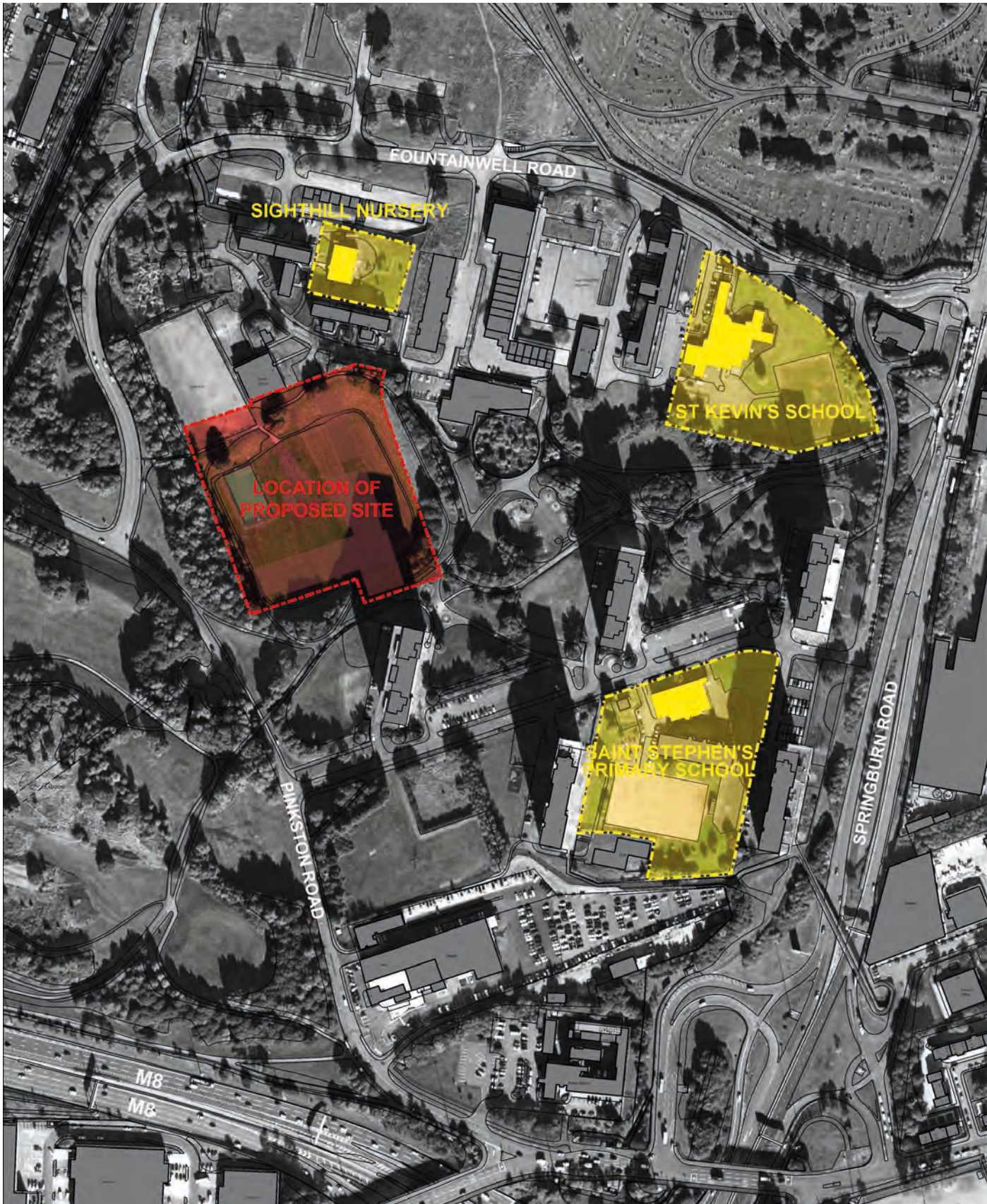
LOCAL DELIVERY GROUP - SEPTEMBER 2017
 PROJECT MANAGEMENT & DESIGN
 SIGHTHILL CAMPUS
 EXECUTIVE DIRECTOR RICHARD BROWN



SITE LOCATION AND OWNERSHIP

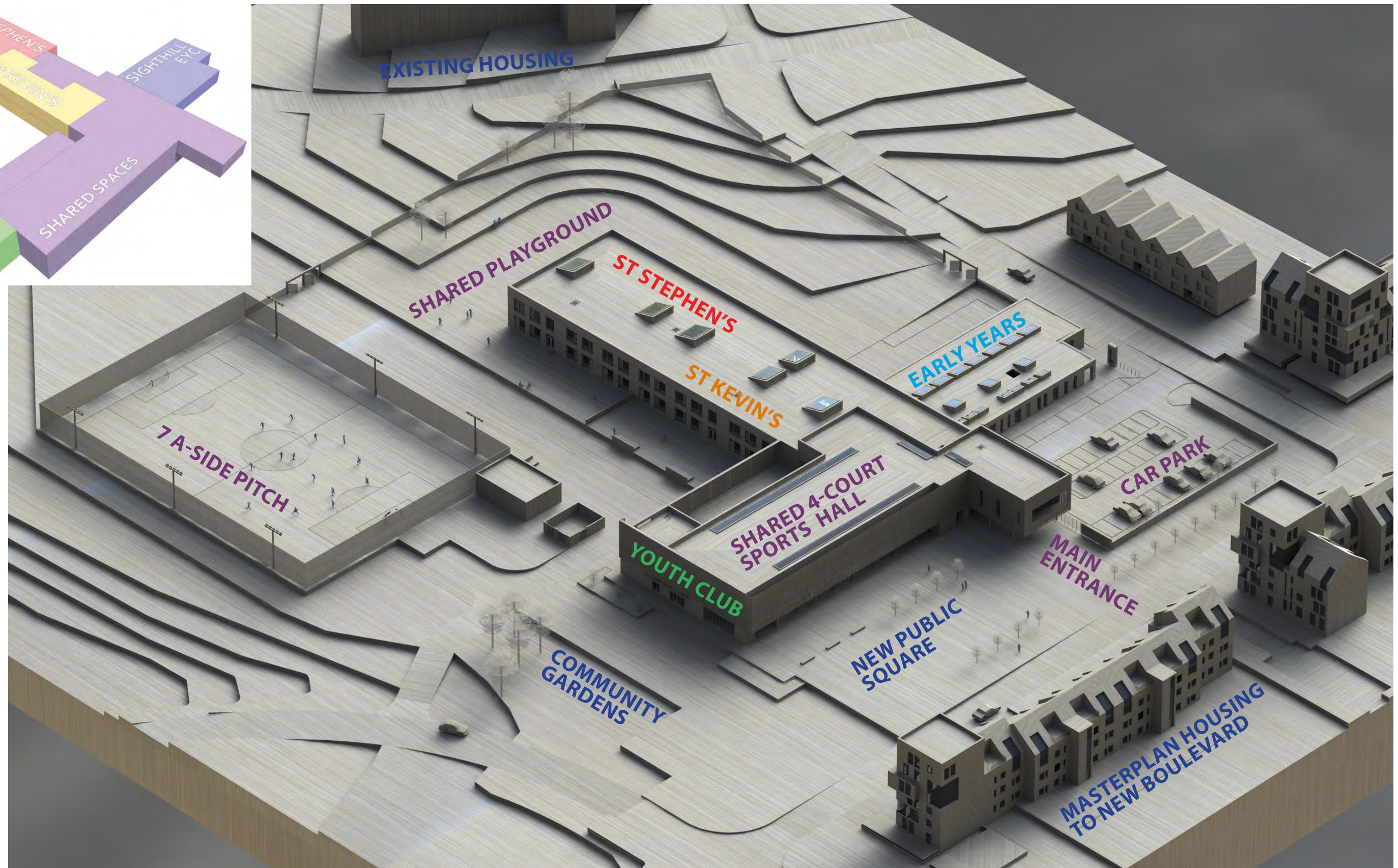
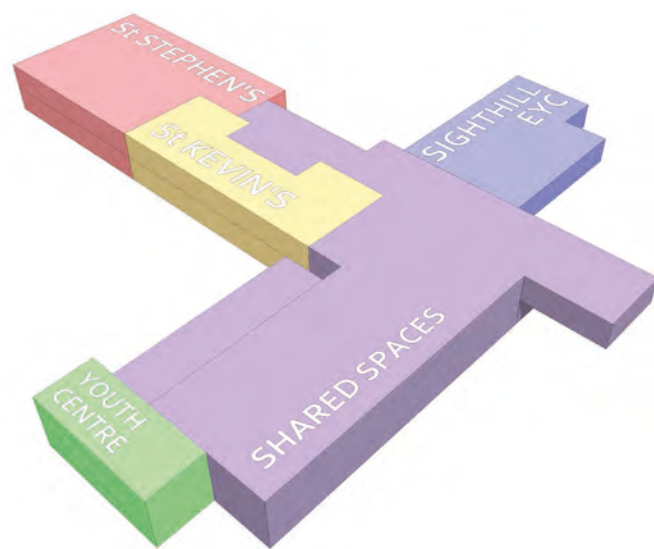


LOCAL AMENITIES

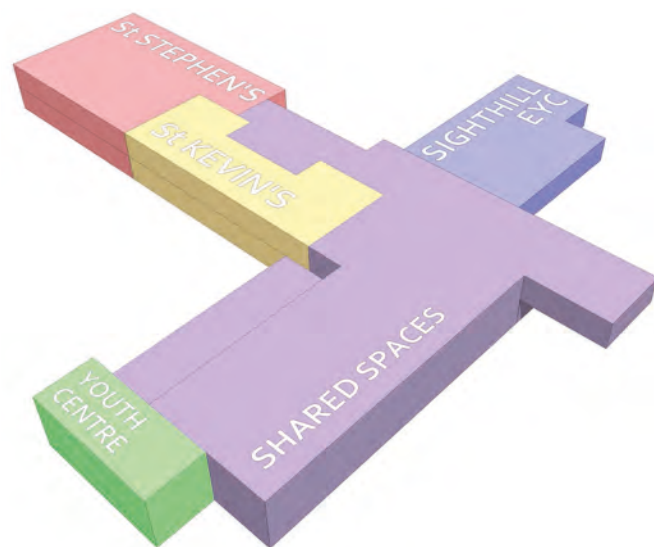


CAMPUS SITE LOCATION PLAN

SITE & BUILDING LAYOUT

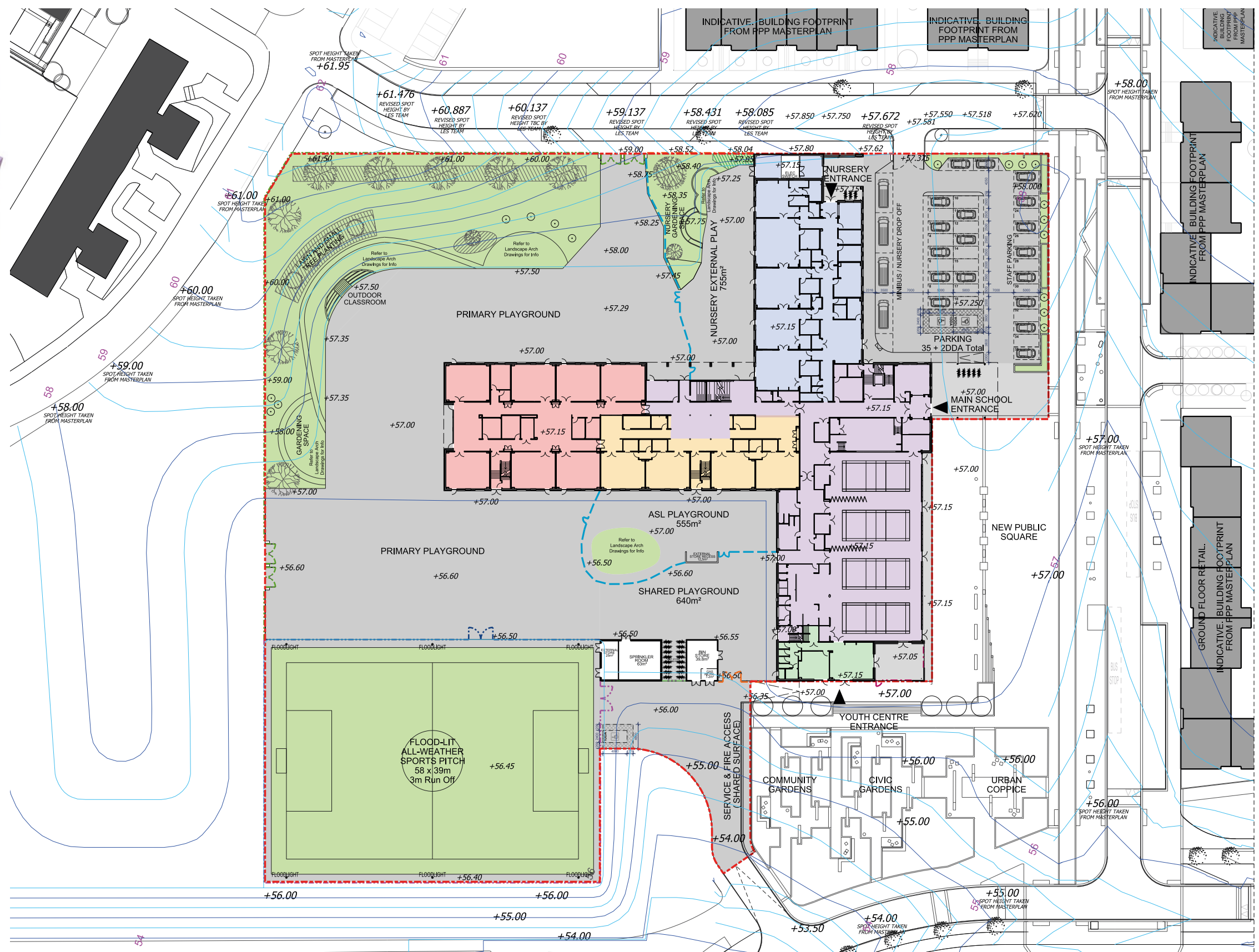


SITE PLAN

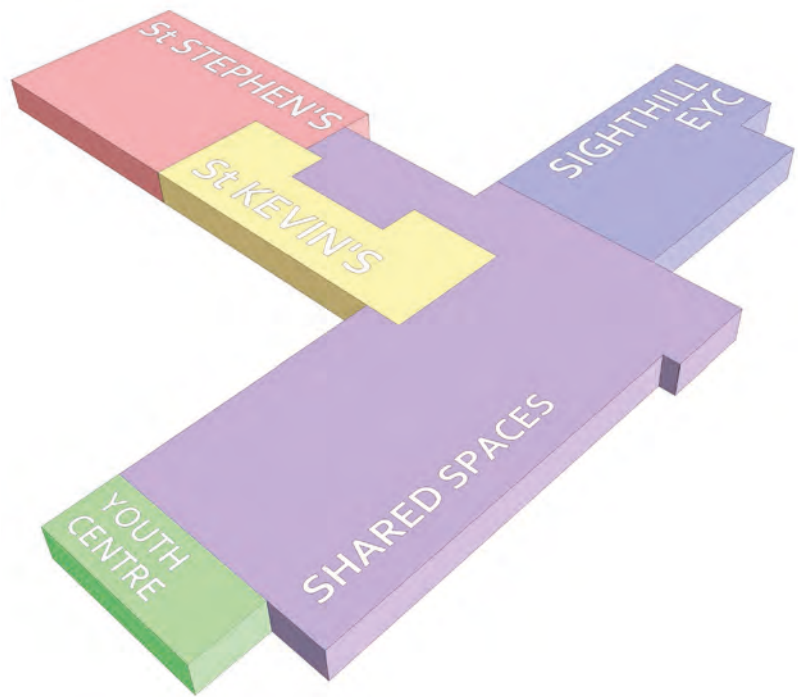


HEART OF THE COMMUNITY

- New Public Square
- Community Gardens
- Direct Access to Linear Park
- Secure Playground Boundary
- Transport Hub
- Main Cycle Route
- 4G Sports Pitch
- 4-Court Sports Hall
- Community Room
- Youth Club



GROUND FLOOR PLAN

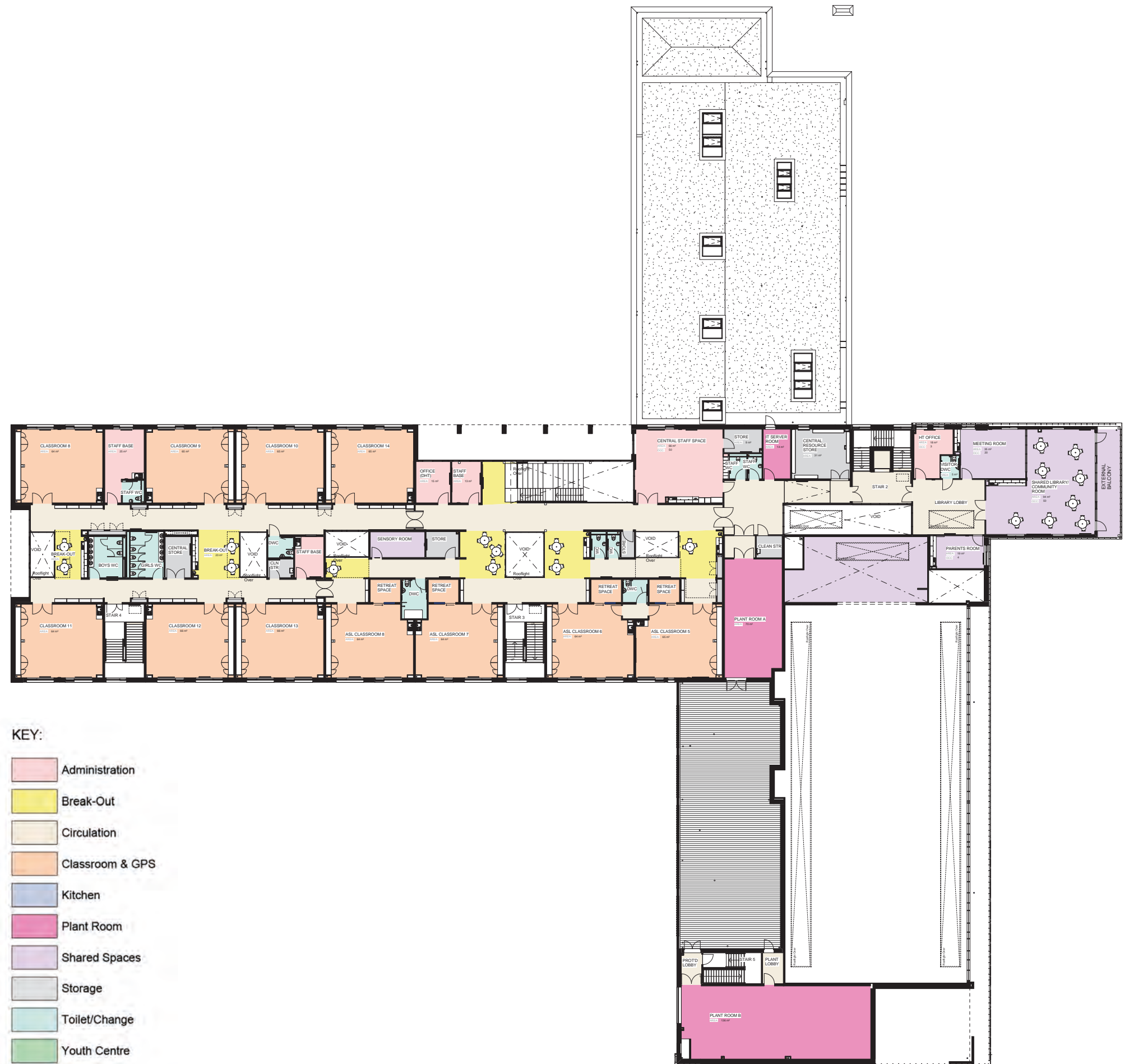
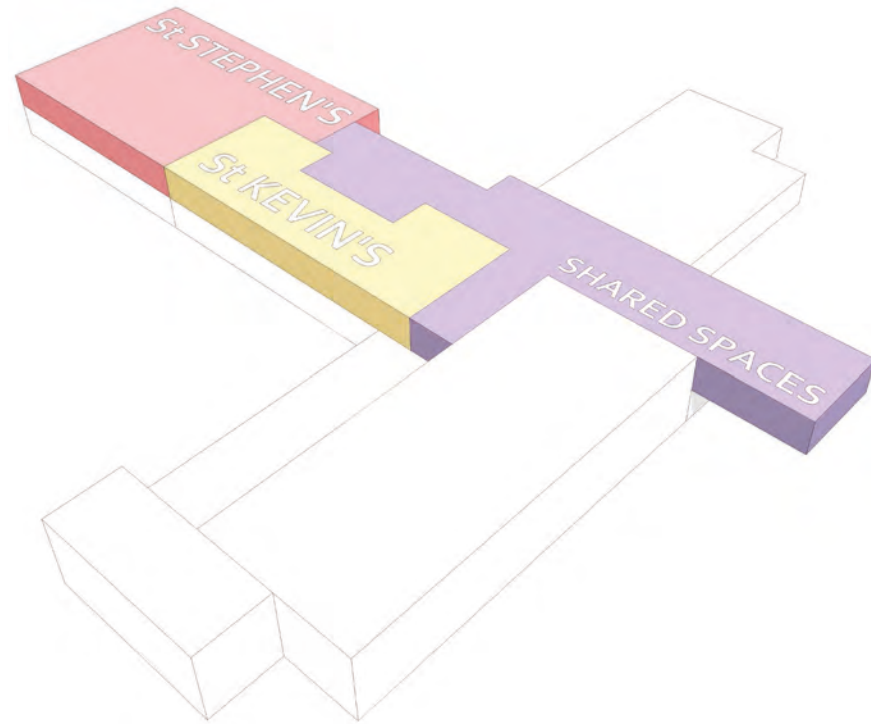


COMMUNITY FACILITIES

- 4G Sports Pitch
- 4-Court Sports Hall
- Drama Space / stage
- Youth Club
- Meeting Room
- Library / Community Room
- Parents Room
- Informal teaching space / breakout
- Changing Areas
- Storage Areas



FIRST FLOOR PLAN



COMMUNITY FACILITIES

- 4G Sports Pitch
- 4-Court Sports Hall
- Drama Space / stage
- Youth Centre
- Meeting Room
- Library / Community Room
- Parents Room
- Informal teaching space / breakout
- Changing Areas
- Storage Areas

















CONSTRUCTION OPERATIONS

INTRODUCTION

- Site Team
- Previous Experience
- Communicating with the Local Community
- Ongoing Projects

CONSIDERATE CONSTRUCTORS SCHEME

- Appearance of the Site at All Times
- Clean & Tidy Site
- Respect the Community
- Minimise Impact on the Community
- Minimise Security Risks to the Community
- Community Involvement
- Previous Experience

SITE PROGRESS / NEWSLETTER

- Updating Community on Site Progress
- 3 Month Look Ahead
- Changes on or Around Site
- Attend Local Meetings

Gowanbank Campus

Local Residents Newsletter

Issue 1 – May 2016





Dear Resident,

As you may be aware City Building are constructing Gowanbank Campus which will incorporate three education establishments and a nursery. The new campus is currently being built on a vacant site between Nitshill Road and Drumbeg Drive.

City Building
City Building is one of Scotland's largest construction companies with 2200 employees throughout the services areas. Our award winning training academies in Queenslie and Laurieston are the most successful apprenticeship training centres in Scotland. We also operate Royal Strathclyde Blind Industries (RSBI), which is one of the best supported employment facilities in Europe, which has over 240 employees most of whom have a disability.

During the construction of the school, many of the apprentices on site will be former pupils from schools in the South Side of Glasgow and many of the fixtures and fittings will be manufactured and supplied by RSBI.

Initial Phase of Works
Main construction works started in December 2015 and it is planned that construction works will be completed by early 2018. Over the coming weeks, site activities will focus on the continuation of concrete foundations, structural steel frame and fire protection to steelwork, metal decking and concrete floor slabs.

The site at Gowanbank Campus has been registered with the Considerate Constructors Scheme.

This scheme has been established to promote good working relationships between Contractors and their surrounding environment and the local residents.

During our time working in your neighbourhood, City Building will endeavour to minimise the impact the building site has on your community.

The normal working hours on the building site:

Monday to Thursday
8.00am to 4.30pm
Friday
8.00am to 1.00pm.

Gowanbank Campus

Local Residents Newsletter

Issue 1 – May 2016



Minimising Disruption
Construction operations can, of course, be unavoidably disruptive. However, we would like to assure everyone that we will do our utmost to minimise any disruption to residents and by working together with you, we hope to complete the new school campus with as little inconvenience as possible.

It is a legal requirement to provide a safe working environment for everyone working on the site and that extends to the general public within the vicinity of the works. As you will appreciate, construction sites can be dangerous places and the safety of all persons is paramount. To that end, security boundary fence will be maintained around the site perimeter to keep the public safe from construction works. We would appreciate if you could extend this important message to your families, friends and neighbours, highlighting the dangers.

Our Construction Team
Our construction team look forward to the successful construction of the new Gowanbank Campus. The project will prove an excellent opportunity for our Apprentices and Trainees to utilise their skills and develop a career in construction.

We intend to keep you informed of further developments and site activities through our newsletters.

However, if you would like to discuss any matters relating to the project, please do not hesitate to contact City Building through the email address or phone number below.

Email:	marketing@citybuildingglasgow.co.uk
Phone Number:	0141 287 2200

Kind regards

Site Project Team
Gowanbank Campus

Building a Sustainable Future



Building a Sustainable Future





SITE ACCESS & PROGRAMME

PROPOSED DELIVERY ROUTE

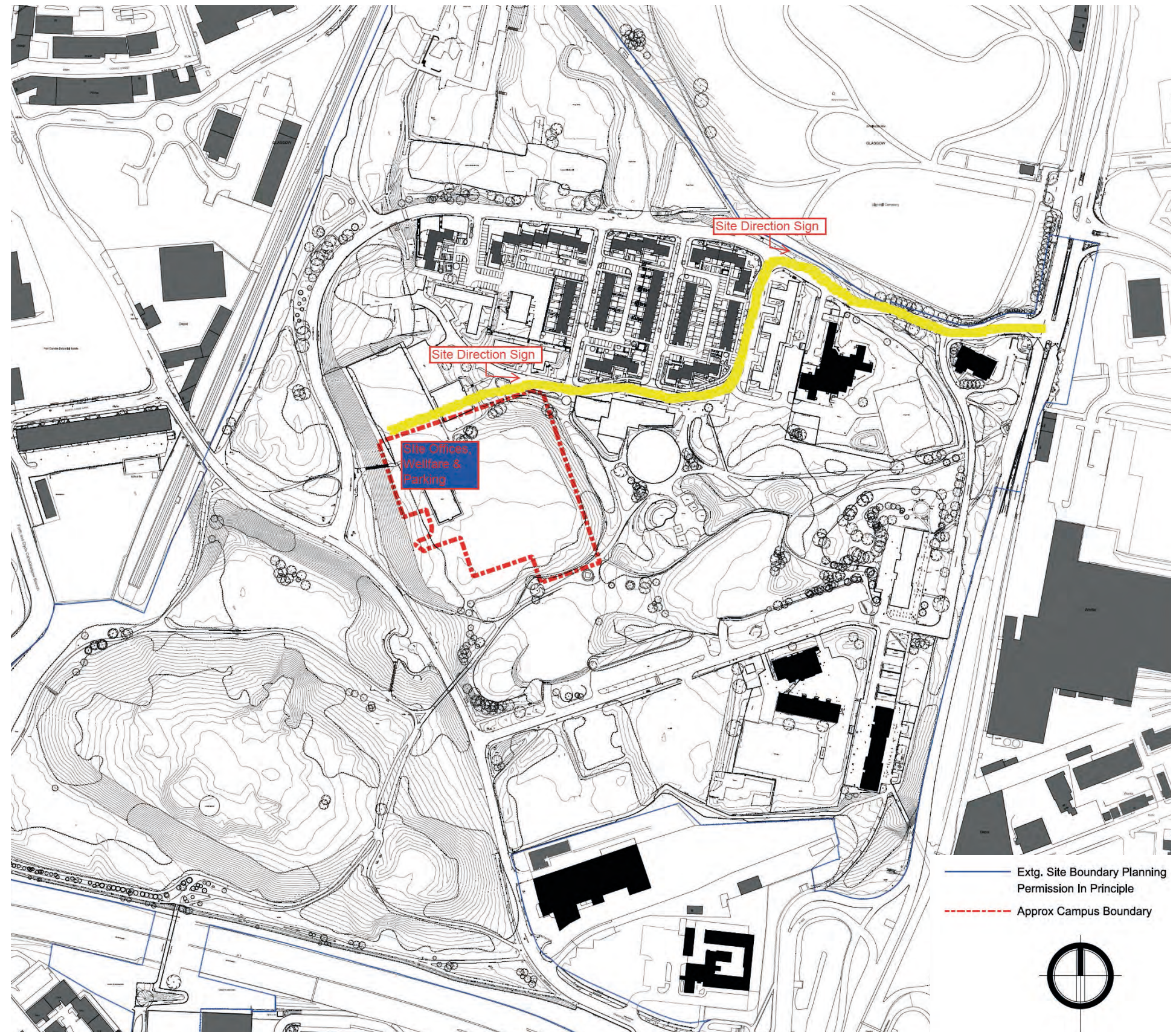
- Via Fountainwell Road
- Clearly Signed Posted
- Off Street Parking
- Pedestrian Access from Bus Route

DELIVERY SCHEDULE

- Delivery Timeslots
9-30am – 2.45pm
- Outwith Peak School Times
- All Sub-Contractor and Delivery Companies Aware

KEY PROGRAMME DATES & DURATION

- Enabling Works Start - 18th September
- Main Construction Works to Follow
- 110 week Duration
- Foundations – Approx October
- Erection of Steel – Approx November
- Erect Scaffold – January
- Timber Kits / Roof Coverings – Approx February / March
- Completion - Approx October 2019



ANY QUESTIONS...

