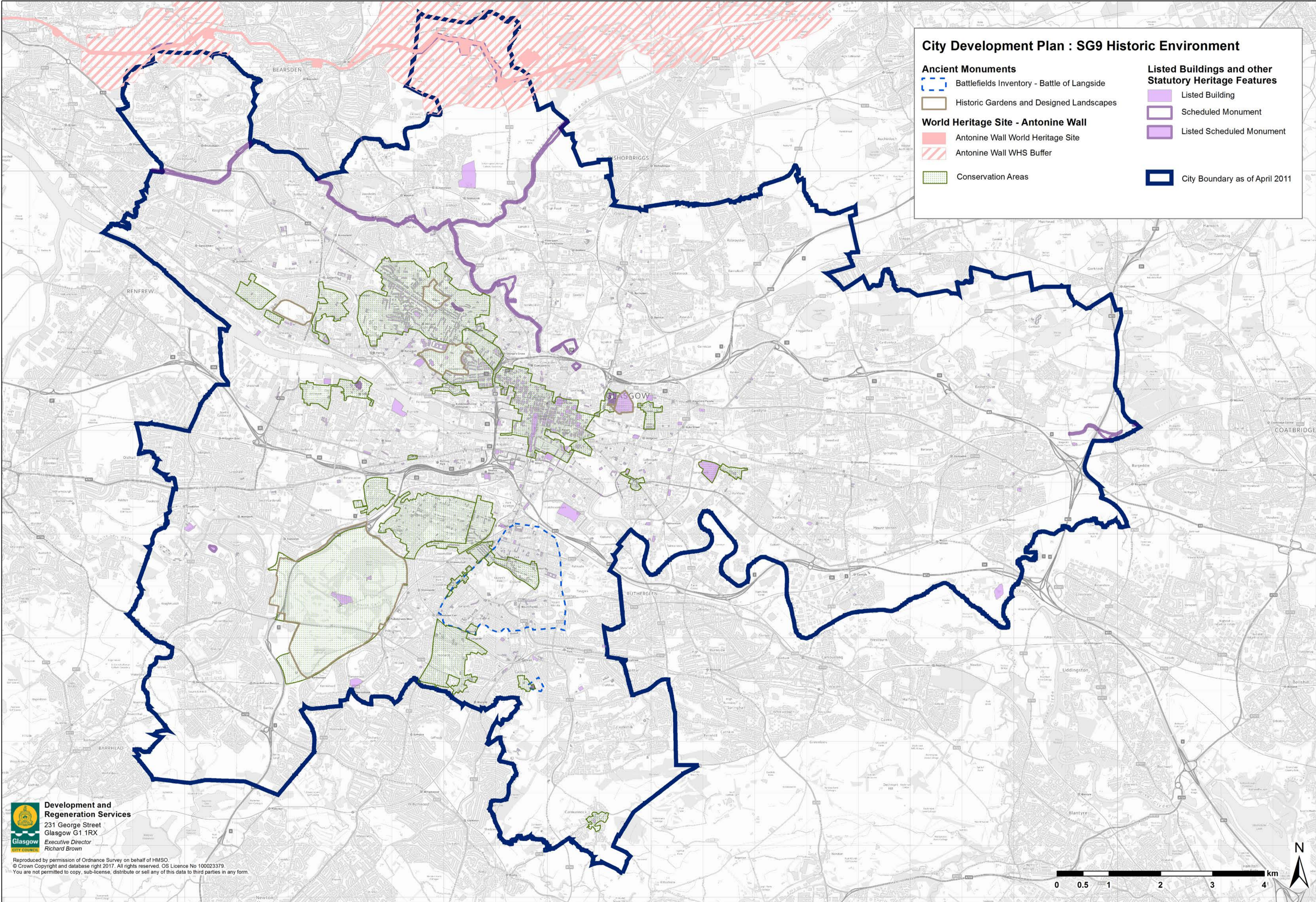


**City Development Plan : SG9 Historic Environment**

- |   |   |
|---|---|
| <b>Ancient Monuments</b>                    | <b>Listed Buildings and other Statutory Heritage Features</b> |
| Battlefields Inventory - Battle of Langside | Listed Building   |
| Historic Gardens and Designed Landscapes    | Scheduled Monument  |
| <b>World Heritage Site - Antonine Wall</b>  | Listed Scheduled Monument                                     |
| Antonine Wall World Heritage Site           | City Boundary as of April 2011                                |
| Antonine Wall WHS Buffer                    |   |
| Conservation Areas                          |   |



**Development and Regeneration Services**  
 231 George Street  
 Glasgow G1 1RX  
 Executive Director  
 Richard Brown

Reproduced by permission of Ordnance Survey on behalf of HMSO.  
 © Crown Copyright and database right 2017. All rights reserved. OS Licence No 100023379.  
 You are not permitted to copy, sub-license, distribute or sell any of this data to third parties in any form.

