

To: The Owner / Occupier

CYCLING TIME TRIAL EVENT WEDNESDAY 8 AUGUST 2018

IMPORTANT INFORMATION – PLEASE READ GLASGOW 2018 EUROPEAN CHAMPIONSHIPS

A new era in world sport will get underway this summer as Glasgow and Berlin host the inaugural European Championships from 2–12 August 2018.

Glasgow and Scotland will host six sports (Aquatics, Cycling, Golf, Gymnastics, Rowing and Triathlon) across 12 venues in partnership with the city of Berlin which will host the Athletics.

As part of the event Glasgow will host the European Cycling Championships, including the Time Trial events which provide an historic opportunity to join the roaring crowds which will greet the best riders from across the continent as they race past iconic sights.

With a potential television audience of up to 1.03 billion across Europe set to watch the action, Glasgow and Scotland will again be in the spotlight during these free events.

The Cycling Time Trial for both Men and Women will be held on Wednesday 8 August. Delivering an event of this size will change how the city of Glasgow, East Dunbartonshire and Stirling operate on certain days of the Championships and inevitably impact the areas along the course. There will be disruption to travel and also changes to some council services on the day of the event. While we hope to minimise these impacts, road closures are required to ensure the safety of competitors, residents and spectators.

You have received this letter because your area will be affected by the Time Trial.

We have divided the race course into a number of sectors and provided you with a map showing you the streets/roads within your sector that will be impacted.


To see the full race course, please visit www.getreadyglasgow.com

For more information

 getreadyglasgow@glasgow.gov.uk

 @GetReadyGlasgow

 getreadyglasgow.com

 0141 287 1118



sustainable thriving achieving
East Dunbartonshire Council
www.eastdunbarton.gov.uk



Time Trial Sector 3a – AUCHENHOWIE ROAD, BALMORE ROAD

Time Trial Sector 4 – GLASGOW ROAD, STRATHBLANE ROAD, MILNGAVIE ROAD

Time Trial Sector 5 – STRATHBLANE ROAD

Time Trial Sector 6 – GLEN ROAD, MAIN STREET (LENNOXTOWN), CAMPSIE ROAD, MAIN STREET (TORRANCE)

PARKING RESTRICTIONS

Parking restrictions will come into force on the race course from **16:00** on **Monday 6 August** to facilitate the course build, and will remain in place until **23:59** on **Wednesday 8 August**.

Any vehicles parked directly on the race route during this time will be removed.

ROAD CLOSURES

There will be a rolling programme of road closures on **Wednesday 8 August** within the aforementioned sections as per the following times.

Sector 3a – Roads will close from **02:00** and these roads will reopen in a phased manner at **12:00**.

Sector 4 – Roads will close from **11:00** and these roads will reopen in a phased manner from **16:00**.

Sector 5 – Road will close from **11:00** and these roads will reopen in a phased manner from **16:00**.

Sector 6 – Roads will close from **09:00** and these roads will reopen in a phased manner from **17:30**.

Auchenhowie Road and Balmore Road will be reopened to traffic following the Women's race to allow residents, spectators and businesses within the race course to access and egress the area via Balmore Road or Boclair Road.

All roads will be fully re-opened no later than **21:00** on **Wednesday 8 August**.

If your street can only be accessed directly from the race course and you require your vehicle on **Wednesday 8 August** you should make alternative parking arrangements prior to **23:59** on **Tuesday 7 August**.

If you know now that you require to make a critical journey on the day of the event please contact us ahead of time at this number, 0141 287 1118, to make the appropriate arrangements.

Should there be an unforeseen circumstance on the day of the event, please also contact us at this number, 0141 287 1118, to discuss arrangements.

TRAVEL AND PUBLIC TRANSPORT

Glasgow, East Dunbartonshire and Stirling will be alive with activity on the day of the Time Trial event and throughout the European Championships which means there will be times when the transport system may be busy so please plan ahead to have an enjoyable day.

Journeys to and from Glasgow may take longer than usual so please leave plenty of time to reach your destination. If you can, leave the car at home and make the most of park and ride facilities and public transport.

EMERGENCY SERVICES

Access for Emergency Services will be maintained at all times and they should be contacted in the normal way.

COUNCIL SERVICES

Due to the nature of the event and significant traffic management requirements there will be disruptions to a number of council services, particularly cleansing, waste and recycling operations. You will receive information through the usual channels regarding any changes to your council services on event days.

COURSE SAFETY

The course will have race-related vehicles and cyclists travelling at speed throughout the day and should be approached with caution. If pedestrians need to cross the course they must only do so at the designated crossing points and take advice and instruction from the stewards along the course.

For more information

BUSINESS INFORMATION

We urge you to start thinking about how your normal parking or access to your business or premises may be affected and put plans in place to minimise disruption.

For businesses please give consideration to:

- Deliveries you may be expecting or you may make
- Waste collection or other servicing to your premises
- If your evacuation plans are affected by road closures

More information for businesses is available at www.getreadyglasgow.com.

INFORMATION SESSIONS

Following the information sessions held in March this year, we will be holding a further series of information sessions in the areas affected by the course as detailed below. We would encourage you to attend one of these sessions to discuss the details of the arrangements, find the best places to spectate and cheer on the elite cyclists on the day and to discuss any further questions you may have.

Wednesday 20 June	Buchanan Galleries, 220 Buchanan Street, Glasgow, G1 2FF	12:00–18:00
Saturday 23 June	St Enoch Centre, 55 St Enoch Square, Glasgow, G1 4BW	10:00–12:00
Saturday 23 June	Strathkelvin Retail Park, 28 Wellington Road, Bishopbriggs, Glasgow, G64 2SA	14:00–18:00
Tuesday 26 June	Glasgow Club Kelvin Hall, 1445 Argyle Street Glasgow, G3 8AW	17:00–19:00
Wednesday 27 June	Winter Gardens, Glasgow Green, Templeton Street, Glasgow, G40 1AT	17:00–19:00
Saturday 30 June	Kelvingrove Art Gallery and Museum, Argyle Street, Glasgow, G3 8AG	10:00–12:00
Saturday 30 June	Morrisons, Gallowgate, 5 Barrack Street, Glasgow, G4 0TZ	14:00–18:00
Tuesday 3 July	Lennoxtown Hub, 46 Main Street, Lennoxtown, Glasgow, G66 7JJ	14:00–18:00
Saturday 7 July	Tesco St Rollox Extra, Cobden Road, St Rollox Business Park, Glasgow G21 1YL	14:00–18:00
Tuesday 10 July	Asda, Bearsden, 80 Milngavie Road, Bearsden, Glasgow G61 2TX	14:00–18:00
Wednesday 11 July	Milngavie Precinct, Milngavie, Glasgow	14:00–18:00

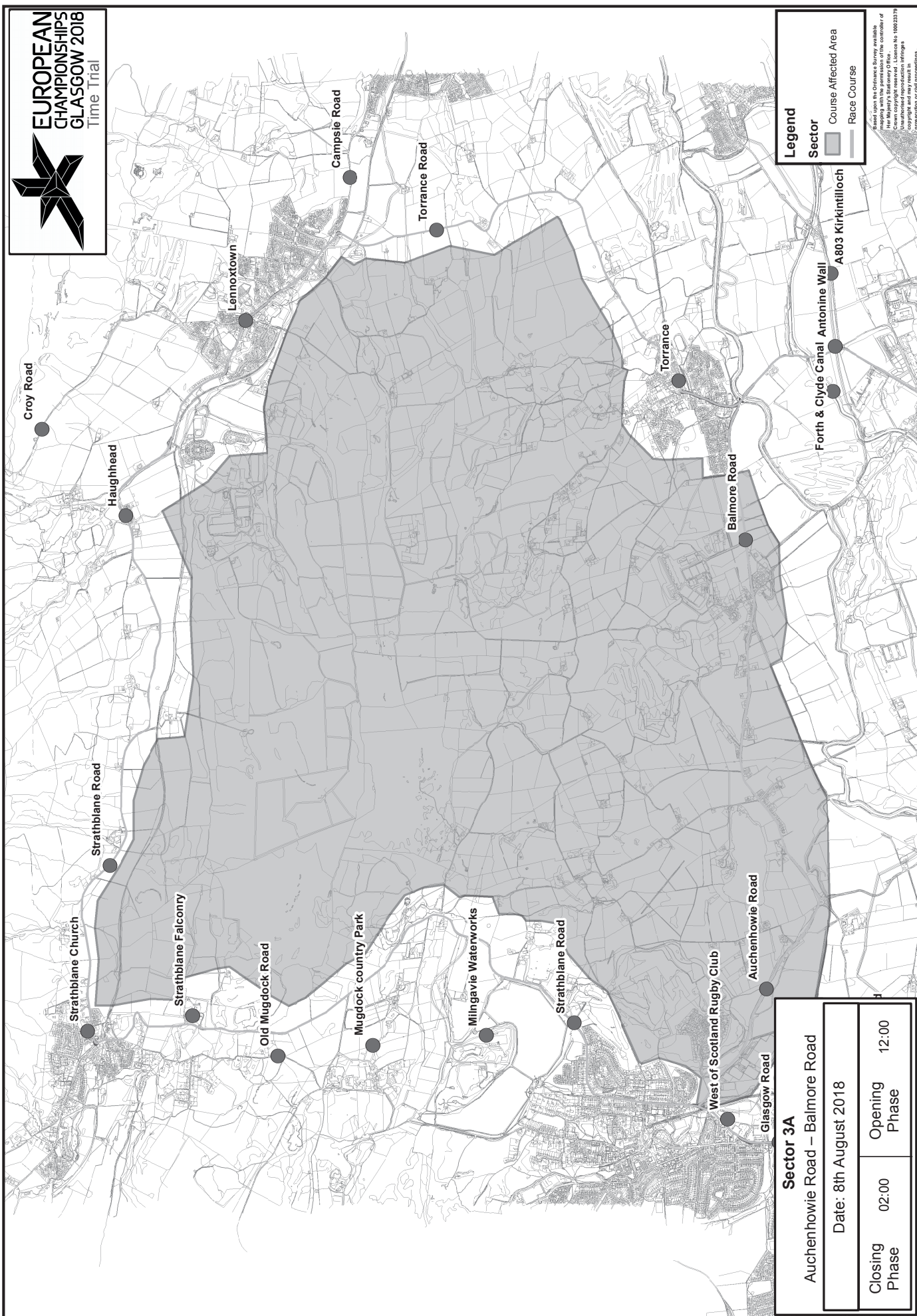
With your support, we plan to stage spectacular Time Trial Races that showcase the city of Glasgow, East Dunbartonshire and Stirling and contribute to an amazing European Championships. We apologise for any inconvenience that these measures may cause you and would like to thank you in advance for your patience and understanding in both the lead up to and during the event. Your continued support will be crucial in making the Championships a success.

If you need any further information please contact our dedicated planning website www.getreadyglasgow.com, email getreadyglasgow@glasgow.gov.uk or call **0141 287 1118**.

The Time Trial events are free to attend and un-ticketed. Tickets for all of the sporting events at Glasgow 2018 are on sale now. Don't miss your chance to be part of history at the first ever European Championships from 2–12 August 2018. For more information visit www.glasgow2018.com

Yours sincerely
Get Ready Glasgow

For more information



For more information



Glasgow Road - Milngavie Road

Date: 8th August 2018

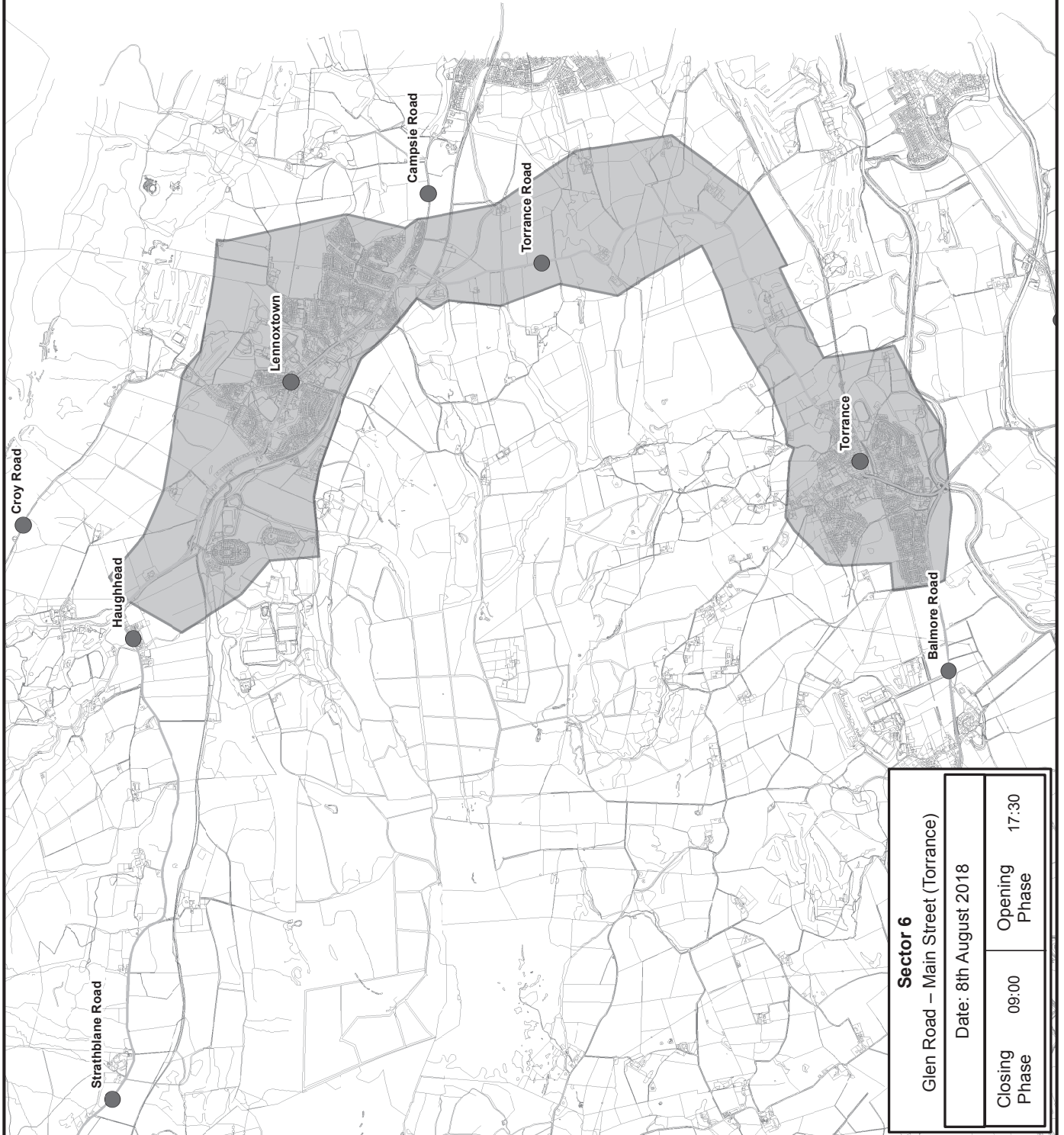
Closing Phase	11:00
Opening Phase	16:00

Based upon the Ordnance Survey available mapping with the permission of the controller Her Majesty's Stationary Office.
 Crown copyright reserved. Licence No 1000
 Unauthorised reproduction infringes
 copyright and may result in
 prosecution or civil proceedings

Based upon the Ordnance Survey available for mapping with the permission of the controller of Her Majesty's Stationery Office.
 Crown copyright reserved. Licence No 1000 233 79
 Unauthorised reproduction infringes copyright and may result in prosecution or civil proceedings.



For more information



Legend

Sector

Course Affected Area

Race Course

Based upon the Ordnance Survey available for the year 2017. The copyright in this map lies with the Controller of Her Majesty's Stationery Office. It is reproduced by permission of the Ordnance Survey and copyright may remain in the original or other proceedings.

Sector 6

Glen Road – Main Street (Torrance)

Date: 8th August 2018

Closing
Phase

09:00

Opening
Phase

17:30

For more information