

| SECTION 11 NOTICES BY RSL | | | | 2018/2019 |
|--|-------------------|-------------------|-------------------|-------------------|
| RSL | 1st Quarter No | 2nd Quarter No | 3rd Quarter No | 4th Quarter No |
| Ardenglen HA | 0 | 0 | 0 | 0 |
| Arklet | 0 | 0 | 0 | 0 |
| Bield | 0 | 0 | 0 | 0 |
| Blairturnnock HA | 1 | 1 | 1 | 0 |
| Blochairn HA | 0 | 0 | 1 | 1 |
| Broomhouse HA | 0 | 0 | 0 | 0 |
| Cadder HA | 5 | 4 | 5 | 4 |
| Cairn HA | 2 | 0 | 0 | 0 |
| Calvay HA | 2 | 4 | 1 | 3 |
| Cassiltoun HA | 7 | 11 | 11 | 9 |
| Cathcart HA | 1 | 0 | 0 | 2 |
| Cernach HA | 5 | 1 | 2 | 2 |
| Charing Cross HA | 2 | 0 | 0 | 0 |
| Copperworks HA | 1 | 0 | 0 | 3 |
| Craigdale HA | 0 | 1 | 0 | 0 |
| Cube HA | 4 | 5 | 8 | 13 |
| Drumchapel HA | 1 | 2 | 1 | 2 |
| Easthall Park HA | 2 | 0 | 0 | 2 |
| Elderpark HA | 1 | 4 | 4 | 6 |
| FACT HA | 0 | 0 | 0 | 0 |
| Gardeeen HA | 0 | 3 | 0 | 1 |
| GHA | 136 | 120 | 99 | 119 |
| Glasgow West HA | 4 | 3 | 2 | 2 |
| Glen Oaks HA | 3 | 2 | 4 | 0 |
| Govan HA | 3 | 1 | 2 | 4 |
| Govanhill HA | 5 | 9 | 3 | 9 |
| Hawthorn Co-op | 2 | 2 | 0 | 0 |
| Hillhead HA | 0 | 0 | 0 | 0 |
| Home in Scotland | 3 | 0 | 0 | 1 |
| Home Group Limited | 0 | 1 | 0 | 1 |
| Horizon HA | 0 | 0 | 0 | 0 |
| Kendoon HA | 0 | 0 | 0 | 0 |
| Kingsridge Cleddans HA | 0 | 1 | 0 | 2 |
| Link HA | 0 | 2 | 1 | 3 |
| Linthouse HA | 2 | 1 | 3 | 3 |
| Lochfield Park | 3 | 3 | 0 | 1 |
| Loretto HA | 4 | 0 | 3 | 4 |
| Lowther Homes | 1 | 1 | 5 | 0 |
| Maryhill HA | 6 | 9 | 13 | 12 |
| Milnbank HA | 5 | 3 | 6 | 6 |
| Molendinar Park HA | 4 | 2 | 1 | 0 |
| New Gorbals HA | 0 | 0 | 3 | 9 |
| NG Homes | 23 | 15 | 16 | 28 |
| Northview HA | 2 | 5 | 2 | 1 |
| Parkhead HA | 9 | 8 | 4 | 4 |
| Partick HA | 5 | 1 | 3 | 4 |
| Pineview HA | 3 | 1 | 1 | 0 |
| Provanhall HA | 0 | 1 | 1 | 3 |
| Queens Cross HA | 6 | 8 | 7 | 6 |
| Reidvale HA | 0 | 0 | 0 | 2 |
| Rosehill HA | 0 | 1 | 1 | 2 |
| Ruchazie HA | 0 | 0 | 1 | 0 |
| Sanctuary HA | 5 | 4 | 4 | 4 |
| Scottish Veterans | 0 | 0 | 0 | 0 |
| Shettleston HA | 7 | 3 | 9 | 3 |
| Southside HA | 34 | 11 | 11 | 8 |
| Spireview HA | 0 | 1 | 0 | 1 |
| Strathclyde (Camphill) Housing Society | 0 | 0 | 0 | 0 |
| Tenants First Housing Co-op | 0 | 0 | 0 | 0 |
| Thenue HA | 4 | 8 | 8 | 7 |
| Thistle HA | 1 | 0 | 1 | 0 |
| Tollcross HA | 13 | 8 | 13 | 12 |
| Trust HA | 0 | 0 | 0 | 0 |
| Wellhouse HA | 0 | 1 | 2 | 1 |
| West of Scotalnd HA | 4 | 2 | 10 | 8 |
| Whiteinch & Scotstoun HA | 7 | 4 | 5 | 3 |
| Yoker HA | 2 | 4 | 2 | 0 |
| Yorkhill | 1 | 0 | 0 | 0 |
| TOTAL | 341 | 282 | 280 | 321 |

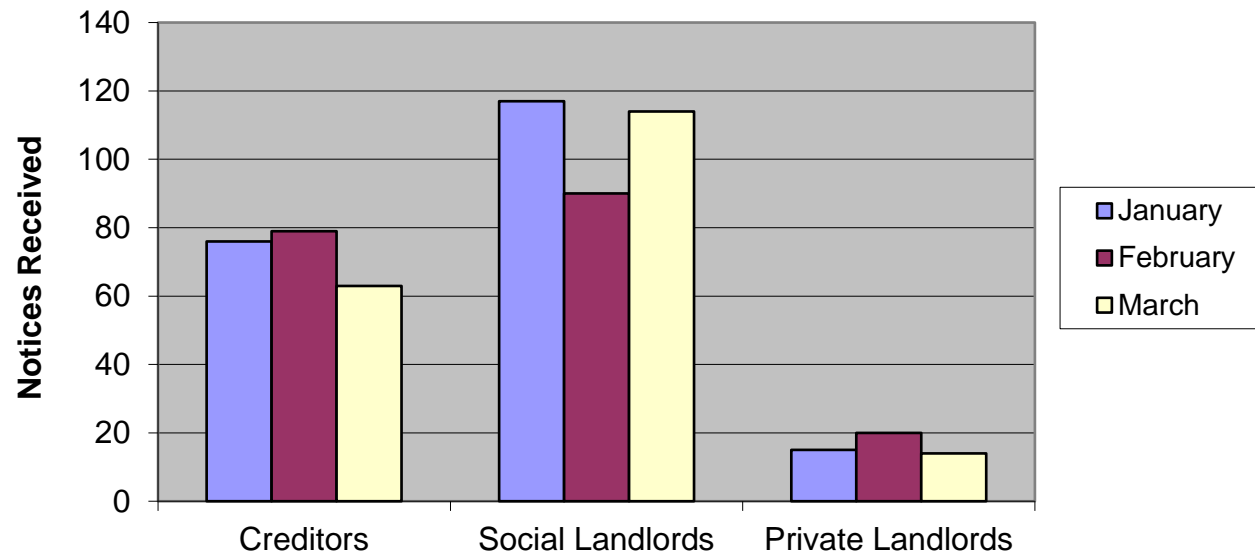
| SECTION 11 NOTICES BY LENDER | | | 2018/2019 | |
|------------------------------------|-------------------|-------------------|-------------------|-------------------|
| Lender | 1st Quarter No | 2nd Quarter No | 3rd Quarter No | 4th Quarter No |
| AIB Group | 0 | 0 | 0 | 0 |
| Allied Irish Bank | 0 | 0 | 0 | 0 |
| Alliance & Leicester Plc | 0 | 0 | 0 | 4 |
| Bank of Ireland | 3 | 3 | 2 | 0 |
| Bank of Scotland Plc | 19 | 49 | 76 | 127 |
| Barclays Bank Plc | 5 | 1 | 0 | 3 |
| Bradford & Bingley | 0 | 1 | 0 | 0 |
| Century Building Society | 0 | 0 | 0 | 0 |
| Chelsea Building Society | 1 | 0 | 0 | 0 |
| Clydesdale Bank Plc | 1 | 2 | 1 | 0 |
| Co-operative Bank | 3 | 1 | 2 | 5 |
| Coventry Building Society | 1 | 0 | 1 | 0 |
| Dunfermline Building Society | 0 | 1 | 0 | 0 |
| Halifax plc | 0 | 0 | 0 | 0 |
| HSBC Bank Plc | 0 | 0 | 0 | 0 |
| Irish Nationwide | 0 | 0 | 0 | 0 |
| JP Morgan Chase | 0 | 0 | 0 | 0 |
| Leeds Building Society | 0 | 1 | 1 | 0 |
| Lloyds Bank | 0 | 2 | 4 | 3 |
| London Scottish Bank | 0 | 0 | 0 | 0 |
| National Westminster Bank | 6 | 3 | 6 | 7 |
| Nationwide Building Society | 6 | 1 | 2 | 2 |
| Northern Rock Plc | 8 | 6 | 10 | 7 |
| RBS | 9 | 3 | 7 | 5 |
| Santander UK | 14 | 8 | 5 | 9 |
| Skipton Building Society | 0 | 0 | 0 | 0 |
| Standard Life | 0 | 0 | 0 | 0 |
| Teachers Building Society | 0 | 0 | 0 | 0 |
| The Woolwich | 0 | 0 | 0 | 0 |
| TSB | 2 | 5 | 4 | 2 |
| Ulster Bank | 0 | 2 | 0 | 0 |
| Virgin Money | 0 | 1 | 1 | 2 |
| Yorkshire Building Society | 0 | 0 | 0 | 0 |
| Total High Street Lenders | 78 | 90 | 122 | 176 |
| Accord Mortgages Ltd | 1 | 0 | 1 | 0 |
| Accountant in Bankruptcy | 1 | 2 | 0 | 0 |
| Adam & Company | 0 | 0 | 0 | 0 |
| Advantage | 0 | 0 | 0 | 0 |
| Airdrie Saving Bank | 0 | 0 | 0 | 0 |
| Alba 2013 Plc | 0 | 0 | 0 | 0 |
| Albion Residential Ltd | 0 | 0 | 0 | 0 |
| Alpha Credit Solutions | 0 | 0 | 1 | 0 |
| Aldermore Bank Plc | 0 | 0 | 0 | 0 |
| Amber Home Loans | 1 | 0 | 1 | 0 |
| Amicus Finance | 0 | 0 | 0 | 0 |
| Arbuthnot Latham & Co | 0 | 0 | 0 | 1 |
| ARIM | 0 | 0 | 0 | 0 |
| Arrow Global | 2 | 0 | 0 | 0 |
| Aviva Equity Release | 0 | 0 | 1 | 0 |
| Beneficial Bank | 0 | 0 | 0 | 0 |
| Black Horse Ltd | 0 | 0 | 0 | 0 |
| Bleiman Finance | 1 | 1 | 1 | 1 |
| Bridging Loans Ltd | 0 | 0 | 0 | 0 |
| Bridging Finance Ltd | 0 | 0 | 0 | 0 |
| Britannica Li Sarl | 0 | 0 | 0 | 0 |
| Central Trust Ltd | 0 | 0 | 0 | 0 |
| Cheltenham & Gloucester Plc | 0 | 0 | 0 | 0 |
| Cheshire Mortgage Co-op | 0 | 0 | 0 | 0 |
| Citifinancial Europe Plc | 0 | 0 | 0 | 0 |
| CT Capital | 0 | 0 | 1 | 0 |
| Commercial First Business Ltd | 0 | 0 | 0 | 0 |
| Co-operative Insurance Society Ltd | 0 | 0 | 0 | 0 |
| DB UK Bank Ltd | 0 | 0 | 0 | 0 |
| Egg Banking | 0 | 0 | 0 | 0 |
| Elderbridge Ltd | 0 | 0 | 1 | 0 |
| Endeavor Personal Finance Ltd | 0 | 0 | 0 | 0 |
| Engage Credit Ltd | 0 | 0 | 0 | 0 |
| Eurosail UK 2007 | 1 | 0 | 0 | 1 |
| FBSE Finance | 0 | 0 | 0 | 0 |
| Finsbury Park Mortgage Funding Ltd | 0 | 0 | 0 | 0 |
| First European Securities Ltd | 0 | 0 | 0 | 0 |
| Firstplus Financial Group | 0 | 0 | 0 | 0 |
| Future Mortgages | 0 | 0 | 0 | 0 |
| GE Money | 0 | 0 | 0 | 0 |
| Gemini Funding Ltd | 0 | 0 | 0 | 0 |
| Glasgow Credit Union | 0 | 0 | 0 | 0 |
| Godiva Mortgages | 0 | 0 | 0 | 0 |
| Habib Bank | 0 | 0 | 0 | 0 |
| Harpmanor Ltd | 0 | 0 | 0 | 0 |
| HFC Bank Ltd | 0 | 0 | 0 | 0 |

| | | | | |
|---------------------------------------|---|---|---|---|
| Home Select Finance Ltd | 0 | 1 | 0 | 0 |
| Household Mortgage Co-op | 0 | 0 | 0 | 0 |
| IDEM Capital Securities Ltd | 1 | 0 | 0 | 0 |
| I Group UK Loans Ltd | 0 | 0 | 0 | 0 |
| ITL Mortgages Ltd | 0 | 0 | 0 | 0 |
| Just Retirement Ltd | 0 | 0 | 1 | 0 |
| KBC Bank Ireland | 0 | 0 | 0 | 0 |
| KBC Homeloans | 0 | 0 | 0 | 0 |
| Kensington Mortgage Company | 1 | 2 | 3 | 2 |
| Lakehouse Mortgages Ltd | 0 | 0 | 0 | 0 |
| Lancashire Mortgage Co-op | 0 | 0 | 0 | 0 |
| Landmark Mortgages | 6 | 9 | 5 | 9 |
| Loan Logics | 0 | 0 | 0 | 0 |
| Lothian Homes Ltd | 0 | 0 | 0 | 0 |
| London Scottish Finance | 0 | 0 | 0 | 0 |
| Lowry Capital Ltd | 0 | 0 | 0 | 0 |
| LSF VII Bonette Investments | 0 | 0 | 0 | 0 |
| Marlborough Loans Ltd | 0 | 0 | 0 | 0 |
| Mars Capital Finance | 0 | 0 | 0 | 0 |
| Melbourne Mortgages | 0 | 0 | 0 | 0 |
| Morag Finance Ltd | 1 | 0 | 0 | 1 |
| Morgan Stanley Bank International Ltd | 0 | 0 | 0 | 3 |
| Mortgages Business Plc | 0 | 1 | 1 | 1 |
| Mortgage Agency Services Number 2 | 0 | 0 | 0 | 0 |
| Mortgage Express | 5 | 4 | 1 | 4 |
| Mortgage Express Number 2 | 0 | 0 | 0 | 0 |
| Mortgage Funding 2008 | 1 | 0 | 0 | 0 |
| Mortgage Title Resolutions Ltd | 0 | 0 | 0 | 0 |
| Mortgage Trust Ltd | 0 | 0 | 0 | 0 |
| Mortgages 1 Ltd | 2 | 1 | 0 | 1 |
| Mortgages 2 Ltd | 0 | 0 | 0 | 0 |
| Mortgages 5 Ltd | 0 | 0 | 0 | 0 |
| Nemo Personal Finance | 1 | 0 | 0 | 0 |
| Newcastle Building Society | 0 | 0 | 0 | 0 |
| New Life Mortgages Funding Ltd | 0 | 0 | 0 | 0 |
| North Yorkshire Mortgages | 0 | 0 | 0 | 0 |
| Northern Bank Ltd | 0 | 1 | 0 | 0 |
| Oakwood Homeloans Ltd | 0 | 0 | 0 | 0 |
| Ocelot Resolutions Ltd | 0 | 1 | 0 | 1 |
| Onesavings Bank Plc | 0 | 0 | 0 | 0 |
| OCWEN 2 Ltd | 0 | 0 | 0 | 0 |
| Paragon Personal Finance Ltd | 0 | 0 | 0 | 0 |
| Paragon Mortgages Ltd | 1 | 0 | 0 | 1 |
| Paratus AMC Ltd | 0 | 0 | 0 | 1 |
| Pepper UK Ltd | 0 | 2 | 1 | 1 |
| Picture Homeloans | 1 | 0 | 0 | 0 |
| Platform Funding Ltd | 1 | 6 | 1 | 0 |
| Places for People Home Limited | 0 | 0 | 0 | 1 |
| Preferred Mortgages Ltd | 0 | 1 | 3 | 1 |
| Premier Burrell Ltd | 0 | 0 | 0 | 0 |
| Prestige Finance Ltd | 1 | 2 | 2 | 4 |
| Prime Credit 5 | 0 | 0 | 0 | 1 |
| Promontoria Ltd | 0 | 1 | 1 | 0 |
| Redstone Mortgages | 1 | 0 | 0 | 0 |
| Rooftop Mortgages Ltd | 0 | 1 | 0 | 0 |
| Sancopia Portfolios | 0 | 0 | 0 | 0 |
| Saxon Residential | 0 | 0 | 0 | 0 |
| SBS Mortgages | 0 | 0 | 0 | 0 |
| Scottish Building Society | 1 | 0 | 0 | 0 |
| Scottish Prudential Investment Ltd | 0 | 0 | 0 | 0 |
| Scotswest | 0 | 0 | 0 | 0 |
| Scottish Widows Bank | 2 | 0 | 0 | 0 |
| Shawbrook Bank Ltd | 0 | 0 | 0 | 1 |
| Skye Loans | 0 | 3 | 1 | 0 |
| Southern Pacific Mortgage Ltd | 3 | 0 | 0 | 1 |
| Southern Pacific Securities 05-2 Plc | 1 | 1 | 0 | 1 |
| Strathcrown Ltd | 0 | 0 | 0 | 0 |
| Swift 1st Ltd | 0 | 0 | 0 | 0 |
| Swift Advances | 0 | 0 | 0 | 0 |
| Target Loans | 0 | 0 | 0 | 0 |
| TFS Loans | 0 | 0 | 0 | 0 |
| The One Account | 0 | 0 | 0 | 0 |
| The Mortgage Business | 0 | 0 | 2 | 3 |
| The Mortgage Works | 1 | 1 | 2 | 0 |
| TIUTA International | 0 | 0 | 0 | 0 |
| Topaz Finance | 0 | 1 | 0 | 0 |
| Together Commerical Financial Ltd | 1 | 0 | 1 | 1 |
| Trillium Mortgages Ltd | 0 | 0 | 0 | 0 |
| Tulip Mortgages Ltd | 0 | 1 | 0 | 0 |
| UCB Home Loans | 1 | 2 | 2 | 0 |

| | | | | |
|--------------------------------|------------|------------|------------|------------|
| Wave lending | 0 | 0 | 0 | 0 |
| Webb Resolutions | 0 | 0 | 0 | 0 |
| West Bromwich Mortgage Company | 0 | 1 | 2 | 0 |
| West Register Ltd | 0 | 0 | 0 | 0 |
| Westfoot Investments | 0 | 0 | 0 | 0 |
| White Label Loans | 0 | 0 | 0 | 0 |
| Total Other Lenders | 40 | 46 | 36 | 42 |
| Grand Total | 118 | 136 | 158 | 218 |

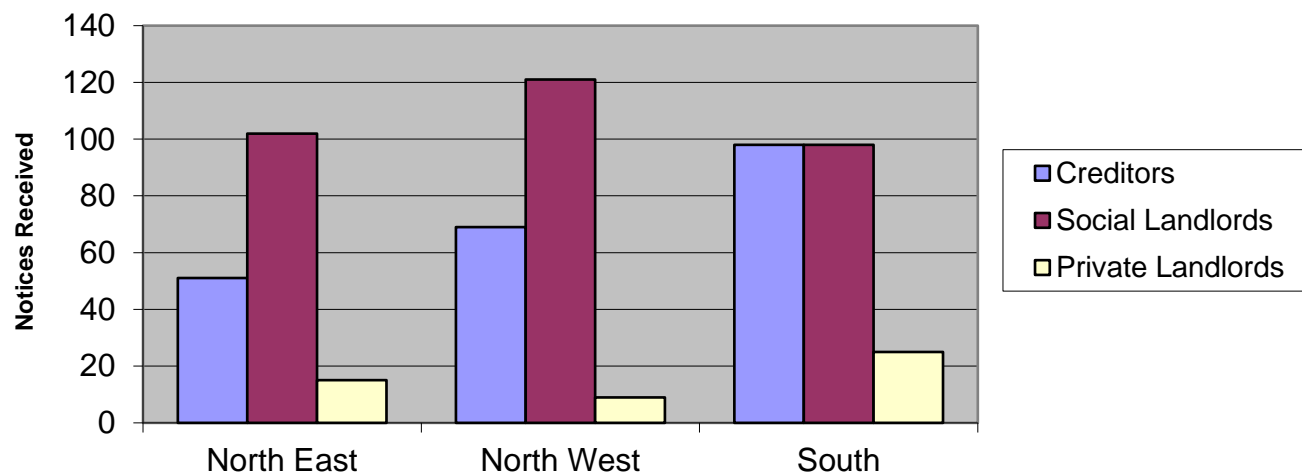
| SECTION 11 NOTICES BY MONTH/LANDLORD TYPE | | | | 2018/2019 |
|---|------------|------------------|-------------------|------------|
| Month | Creditors | Social Landlords | Private Landlords | Totals |
| January | 76 | 117 | 15 | 208 |
| February | 79 | 90 | 20 | 189 |
| March | 63 | 114 | 14 | 191 |
| Total | 218 | 321 | 49 | 588 |

Section 11 Notification



| SECTION 11 NOTICES BY SOCIALWORK AREA | | | | 2018/2019 |
|---------------------------------------|------------|------------------|-------------------|------------|
| CHCP | Creditors | Social Landlords | Private Landlords | Totals |
| North East | 51 | 102 | 15 | 168 |
| North West | 69 | 121 | 9 | 199 |
| South | 98 | 98 | 25 | 221 |
| Totals | 218 | 321 | 49 | 588 |

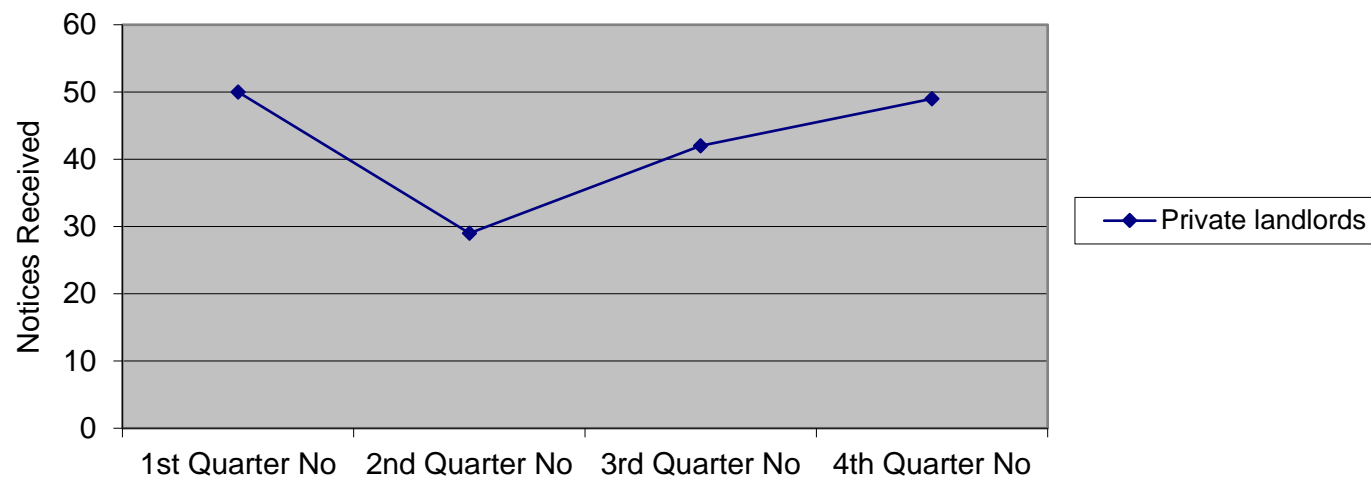
Section 11 Notices by CHCP



SECTION 11 NOTICES - PRIVATE LANDLORD COMPARISONS**2018/2019**

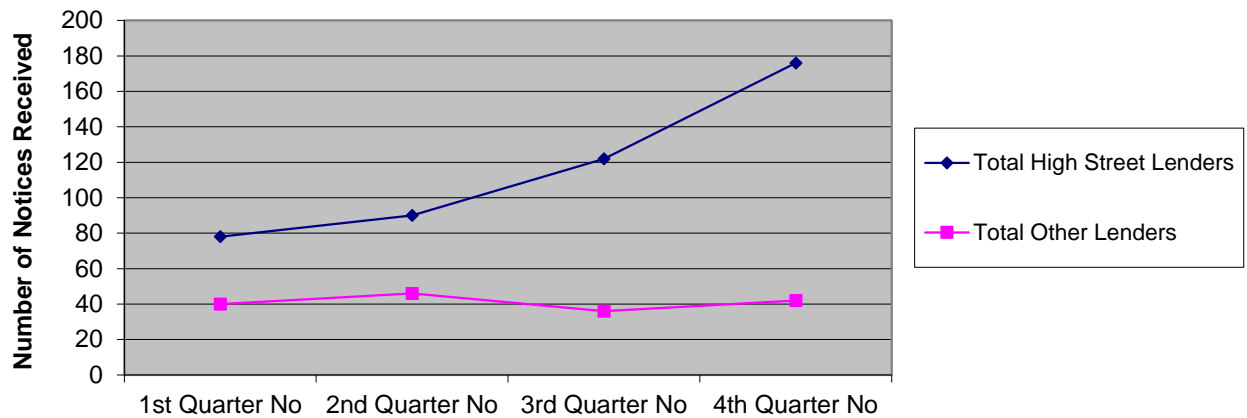
| Private landlords | 1st Quarter No | 2nd Quarter No | 3rd Quarter No | 4th Quarter No |
|-------------------|----------------|----------------|----------------|----------------|
| Private landlords | 50 | 29 | 42 | 49 |

Section 11 Notices Private landlords Comparisons



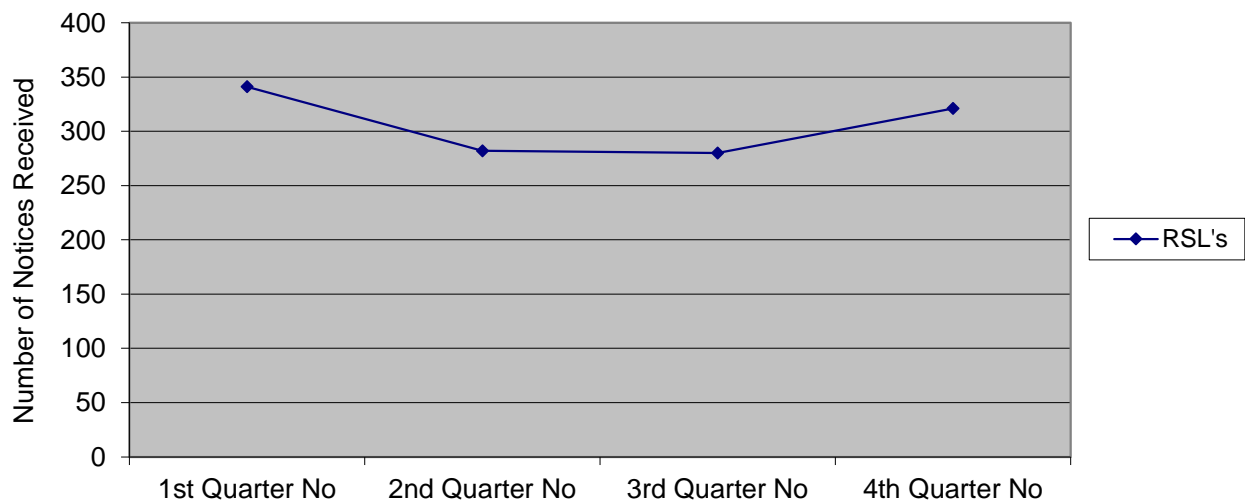
| SECTION 11 NOTICES LENDER COMPARISONS | | | | 2018/2019 |
|---------------------------------------|----------------|----------------|----------------|----------------|
| Lender | 1st Quarter No | 2nd Quarter No | 3rd Quarter No | 4th Quarter No |
| Total High Street Lenders | 78 | 90 | 122 | 176 |
| Total Other Lenders | 40 | 46 | 36 | 42 |

Section 11 Notices Lender Comparisons



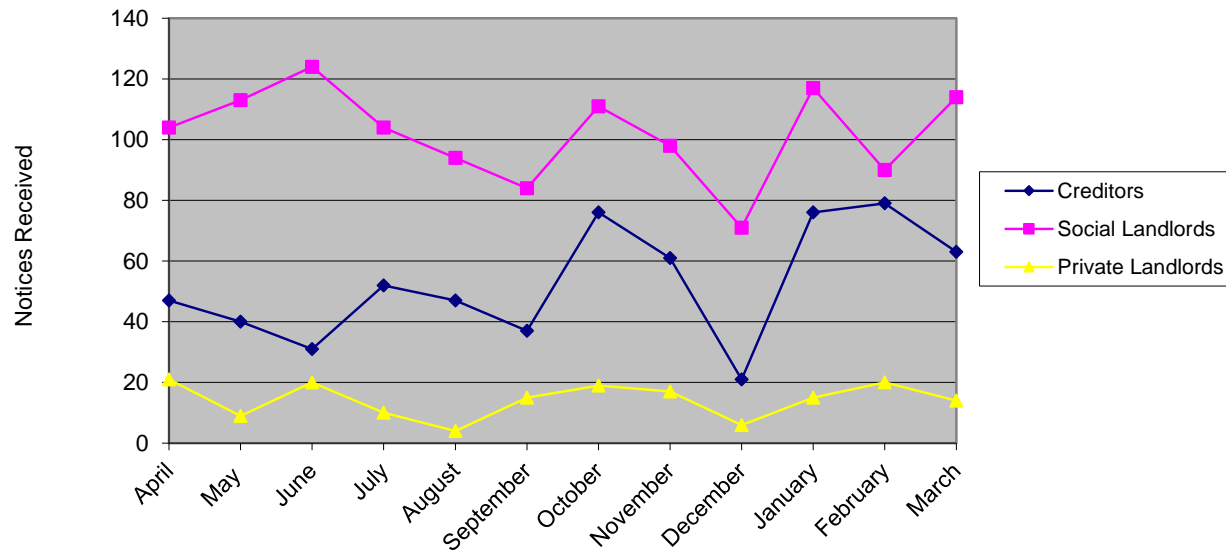
| SECTION 11 NOTICES - RSL COMPARISONS | | | | 2018/2019 |
|--------------------------------------|----------------|----------------|----------------|----------------|
| RSL | 1st Quarter No | 2nd Quarter No | 3rd Quarter No | 4th Quarter No |
| RSL's | 341 | 282 | 280 | 321 |

Section 11 Notices RSL Comparisons



| SECTION 11 NOTICES - MONTHLY COMPARISONS | | | | 2018/2019 |
|--|------------|------------------|-------------------|-------------|
| Month | Creditors | Social Landlords | Private Landlords | Totals |
| April | 47 | 104 | 21 | 172 |
| May | 40 | 113 | 9 | 162 |
| June | 31 | 124 | 20 | 175 |
| July | 52 | 104 | 10 | 166 |
| August | 47 | 94 | 4 | 145 |
| September | 37 | 84 | 15 | 136 |
| October | 76 | 111 | 19 | 206 |
| November | 61 | 98 | 17 | 176 |
| December | 21 | 71 | 6 | 98 |
| January | 76 | 117 | 15 | 208 |
| February | 79 | 90 | 20 | 189 |
| March | 63 | 114 | 14 | 191 |
| Total | 630 | 1224 | 170 | 2024 |

Section 11 Notices - Monthly Comparisons



SECTION 11 NOTICES - YEAR ON YEAR COMPARISON

2009 - Present

| YEAR | Total Notices Received | | | | TOTAL |
|-----------|------------------------|-----|-----|-----|-------|
| | Q1 | Q2 | Q3 | Q4 | |
| 2009-2010 | 562 | 737 | 600 | 645 | 2544 |
| 2010-2011 | 565 | 567 | 361 | 992 | 2485 |
| 2011-2012 | 548 | 720 | 782 | 842 | 2892 |
| 2012-2013 | 713 | 657 | 602 | 691 | 2663 |
| 2013-2014 | 582 | 551 | 610 | 748 | 2491 |
| 2014-2015 | 688 | 556 | 517 | 488 | 2249 |
| 2015-2016 | 498 | 602 | 562 | 592 | 2254 |
| 2016-2017 | 460 | 652 | 483 | 592 | 2187 |
| 2017-2018 | 553 | 530 | 304 | 713 | 2100 |
| 2018-2019 | 509 | 447 | 480 | 588 | 2024 |

