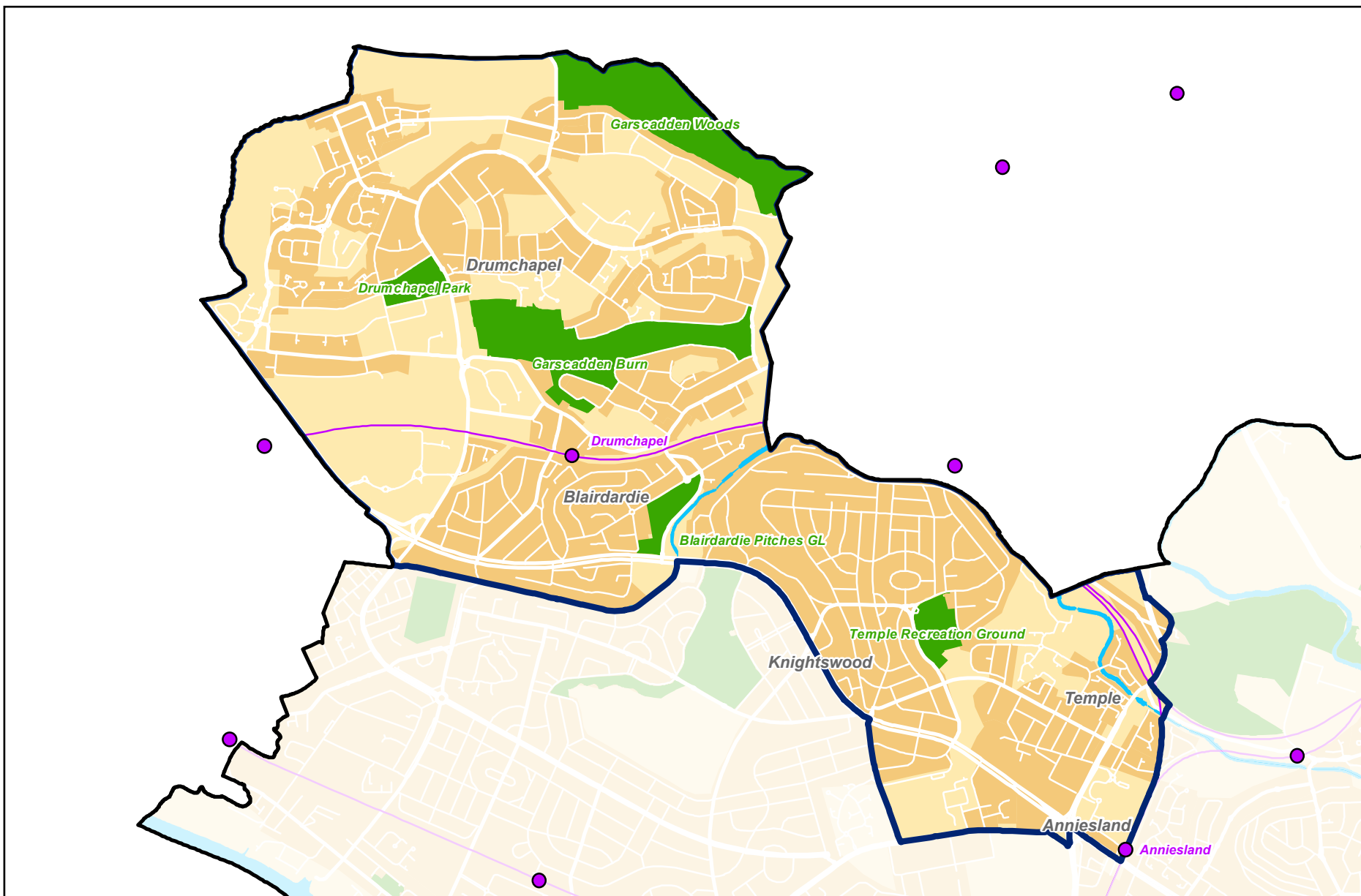


This factsheet provides information on a variety of subjects.
It has been prepared by Development & Regeneration Services,
231 George Street, Glasgow G1 1RX



Not to Scale

©Crown copyright and database rights 2017. OS 100023379

You are not permitted to copy, sub-license, distribute or sell any of this data to third parties in any form

Ward 14 - Drumchapel/Anniesland

POPULATION		HOUSEHOLDS AND HOUSING		ECONOMY	
Population (2015) (1)	29,432	Households (2011) (2)	14,003	RESIDENCE BASED	
Number of Males	13,582	Average Household Size	2.08	Population age 16-64 (2011) (2)	19,462
Number of Females	15,850	Single Person Households	5,823	Economically Active	13,659
Population by Age (2015) (1)		- Age under 65	3,838	- Employees	10,830
0 to 4	1,819	- Age 65 plus	1,985	- Self-Employed	873
5 to 11	2,434	Multi-Adult Households	4,294	- Unemployed	1,956
12 to 15	1,287	- All full-time Students	108	Economically Inactive	5,803
16 to 29	5,780	- All Age 65 plus	530	Benefit Claimants Age 16-64	
30 to 44	6,290	- Other Households	3,656	by Client Group (2016) (6)	
45 to 64	7,544	Households with Children	3,886	- Numbers	
65 to 74	2,228	- Single Parent	1,819	Job Seeker	480
75 plus	2,050	- Other Households	2,067	ESA* and Incapacity Benefits	2,815
Population by Ethnicity (2011) (2)	29,421	Dwellings by Tenure (2015) (4)	14,471	Income Support/Other Benefits	1,360
White Scottish/British	26,743	Owner Occupied	5,835	- % of Population Age 16-64	
White Irish	362	Private Rented	1,828	Job Seeker	2.4%
Other White	630	Glasgow Housing Association	4,020	ESA* and Incapacity Benefits	14.4%
Mixed Ethnic Groups	95	Other Social Rented	2,788	Income Support/Other Benefits	6.9%
Indian	218	Dwellings by Type (2014) (5)	14,492	WORKPLACE BASED	
Pakistani	311	Detached	297	Employee Jobs (2015) (7)	7,000
Bangladeshi	11	Semi-Detached	2,267	Full-time	4,300
Chinese	242	Terraced	2,527	Part-time	2,700
Other Asian	194	Flats and Others	9,401	Employee jobs by Broad	
African	434	Dwellings by Size (2014) (5)		Industrial Group (2015) (7)	
Caribbean or Black	84	1 or 2 Rooms	2,013	Manufacturing, Construction and Utilities	1,500
Other Ethnic Group	97	3 Rooms	6,542	Wholesale and Retail	1,300
Population (2011) (2)		4 or 5 Rooms	5,356	Professional Services **	1,000
In Institutions	308	6 or more Rooms	359	Public Sector Services ***	2,300
Electorate (2017) (3)		Unknown	222	Other Activities ****	900
Electors	21,694				

Data sources:

(1) National Records of Scotland Estimates 2015

(2) National Records of Scotland - 2011 Census

(3) Glasgow City Assessor January 2017

(4) Glasgow City Council Estimates 2015

(5) National Records of Scotland 2014

(includes dwellings as part of communal establishment)

(6) The Department of Work and Pensions May 2016

(7) ONS 2015 Business Register and Employment Survey

* Employment Support Allowance

** includes services in relation to business administration, information, communications, finance, insurance, property, professional, scientific and technical

*** includes services in relation to public administration, education and health

**** includes motor trades, transport, storage, accommodation, food services, arts, entertainment and recreation