

Remote access to your desktop

CGI will talk you through a six step process to set up your remote desktop when you pick up your laptop and you can also follow this guide below at home.

Contact CGI for technical support

Once you get home, if you have any issues with the laptop or connectivity, please contact the CGI Deployment Managers who will share their number with you. Your call will then be triaged accordingly.

1

DOUBLE CLICK ON REMOTE DESKTOP CONNECTION

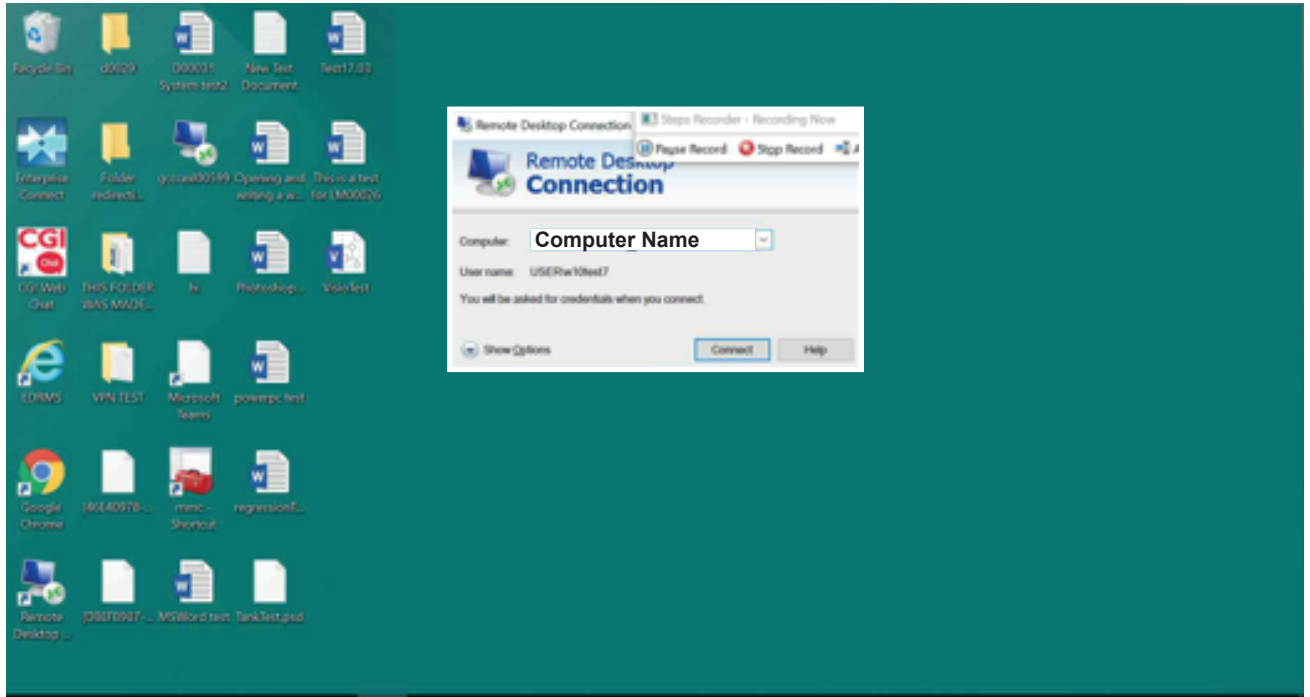


Continue



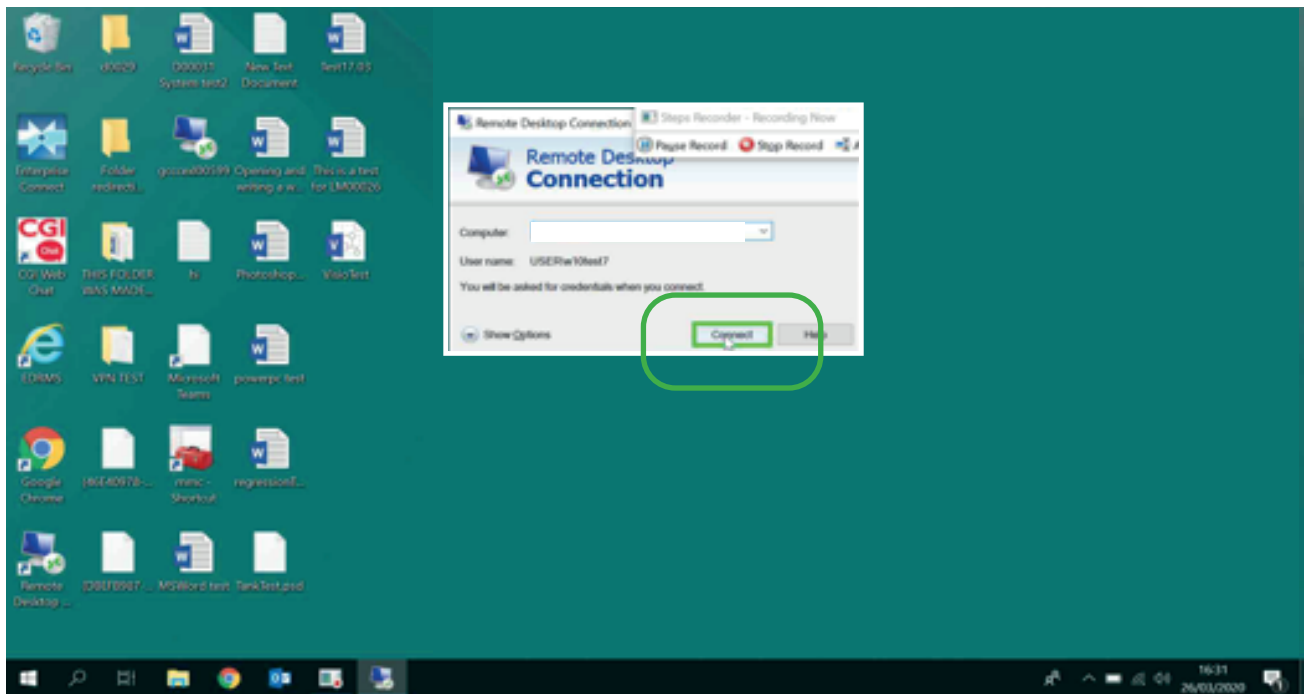
2

ENTER COMPUTER NAME (THIS IS YOUR CURRENT DESKTOP/COMPUTER NAME)



3

CLICK CONNECT

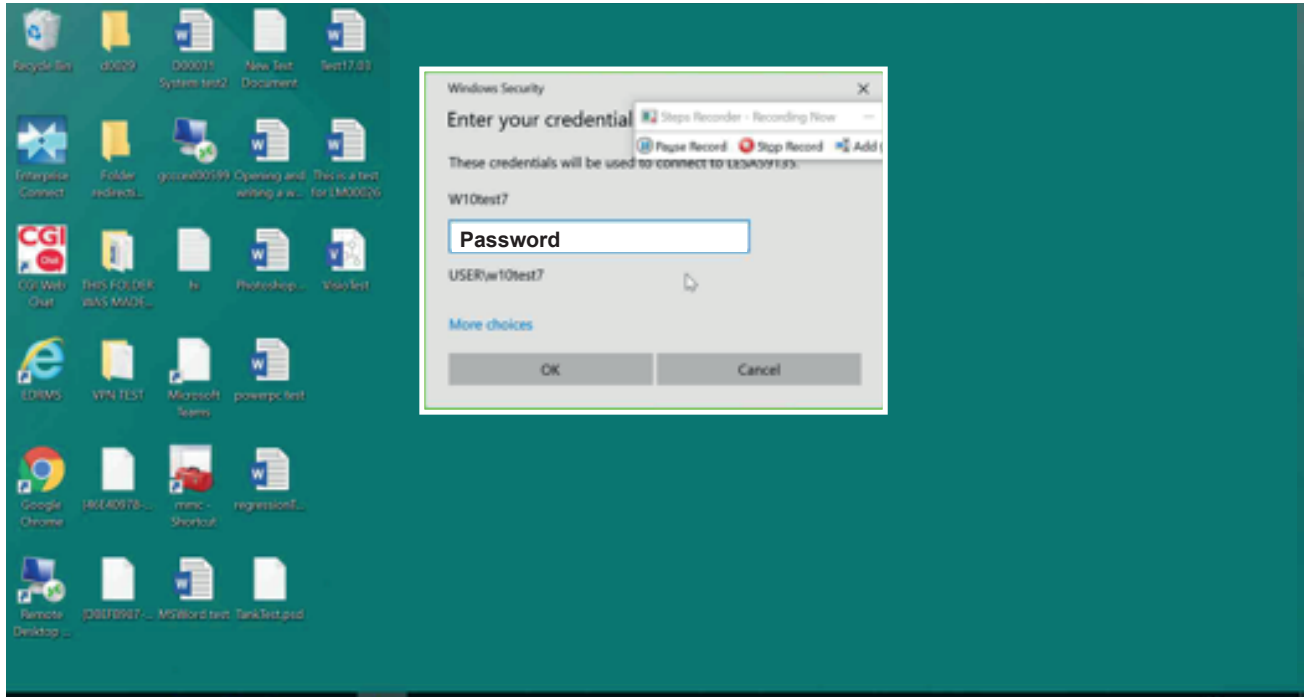


Continue



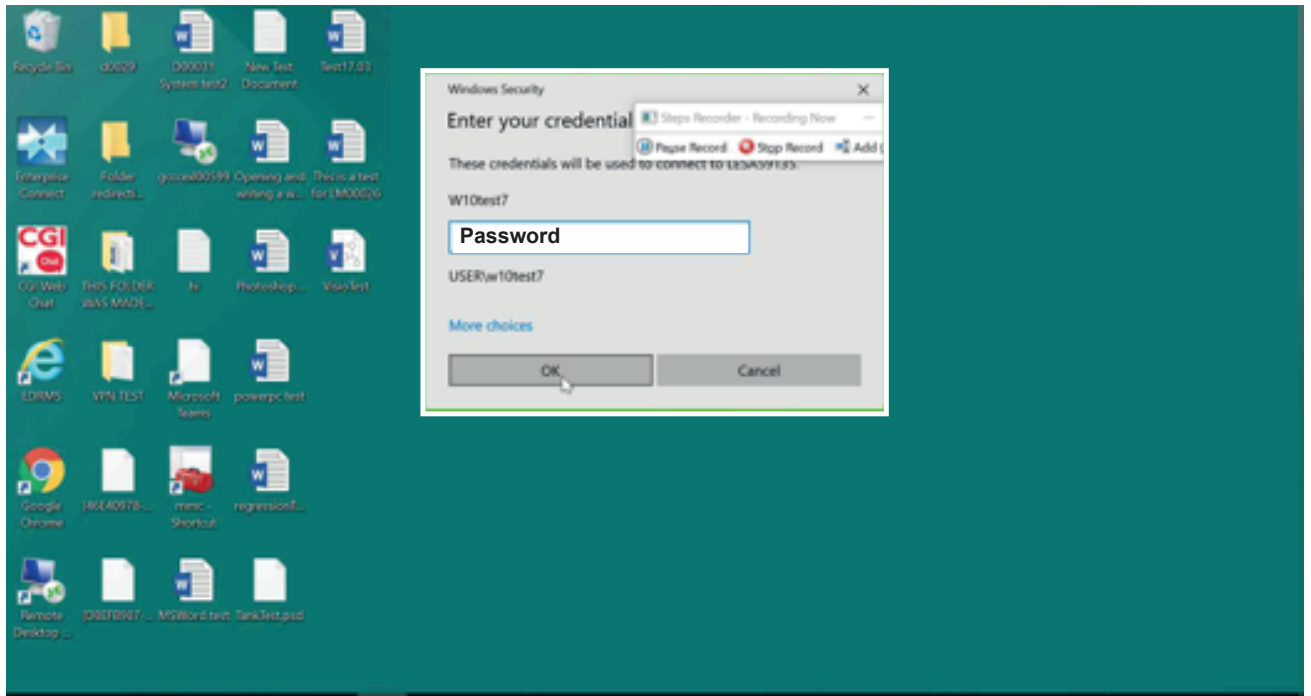
4

ENTER PASSWORD (THIS IS YOUR USUAL LOGIN PASSWORD)



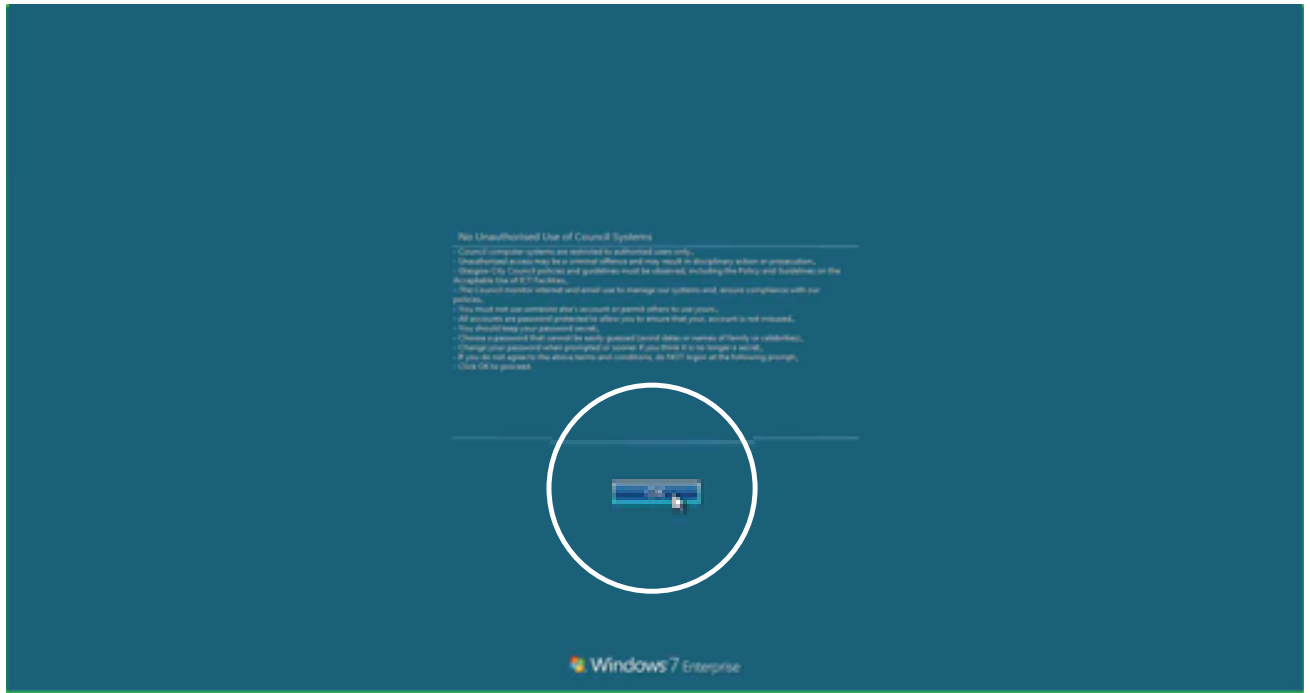
5

CLICK OK



Continue





Continue

