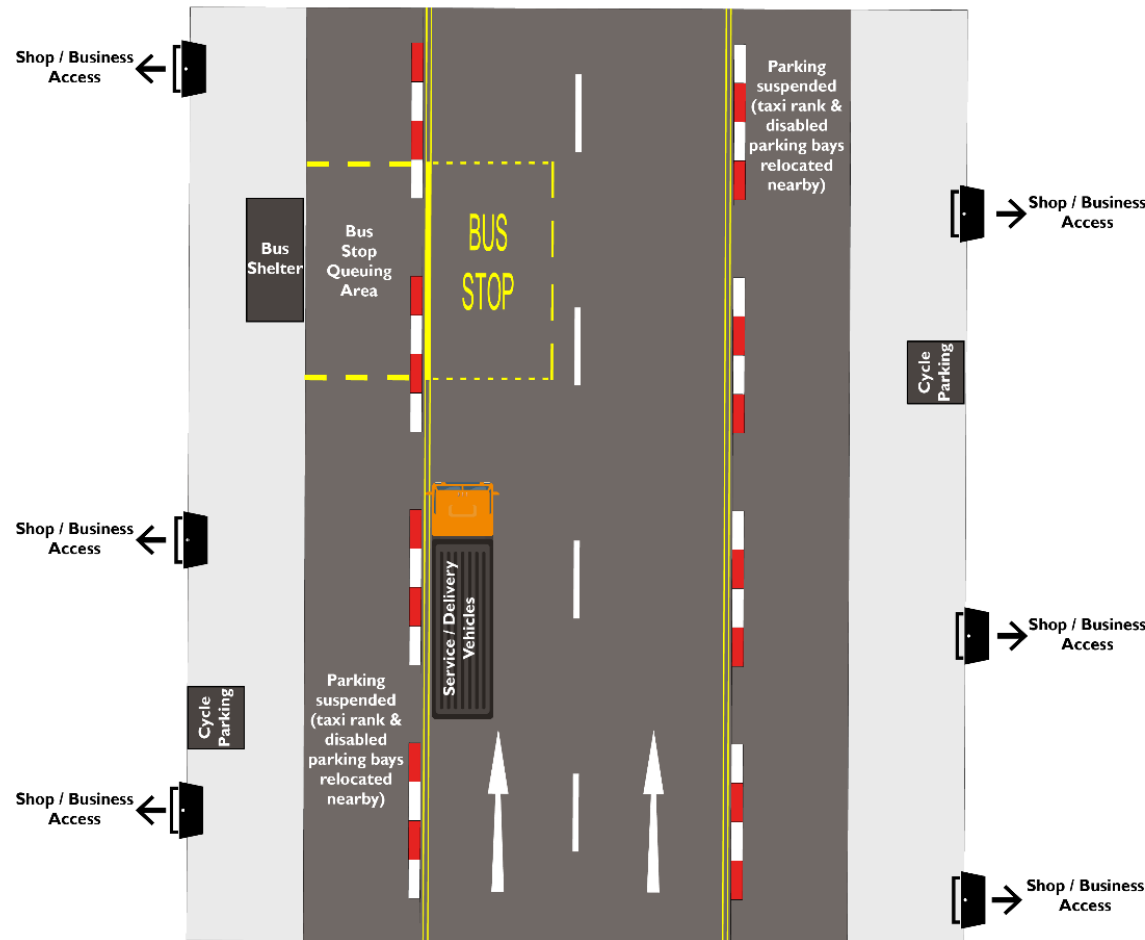


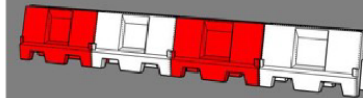
# Visualisations of Spaces for People temporary measures

## Typical City Centre Street



## Spaces for People

- Removal of all unnecessary street furniture on footways
- Use of existing street furniture (e.g. lamp posts) for signing to avoid impacting on pedestrian flows



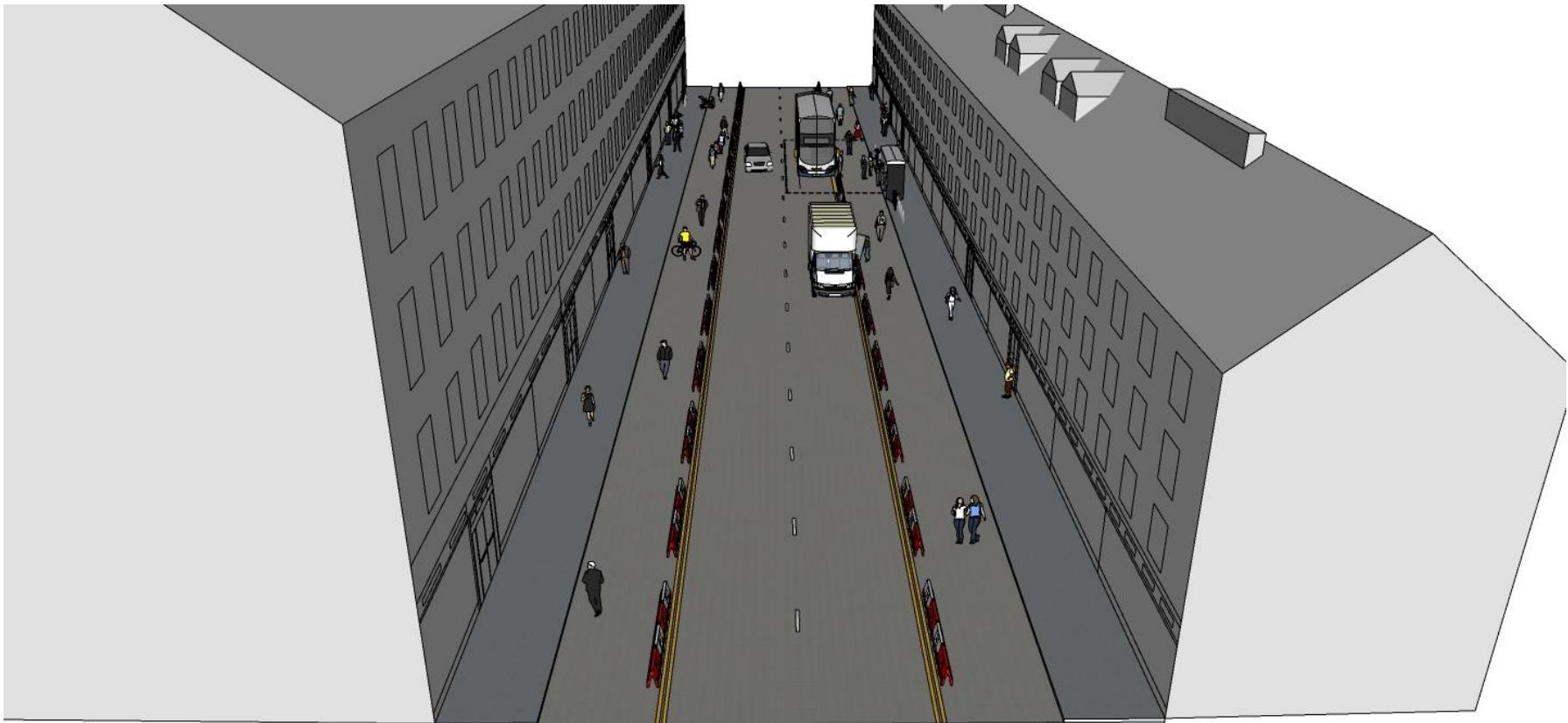
Typical dimensions 80cm (h) x 120cm (l) x 40cm (w)













Visualisations by [Stantec](#)