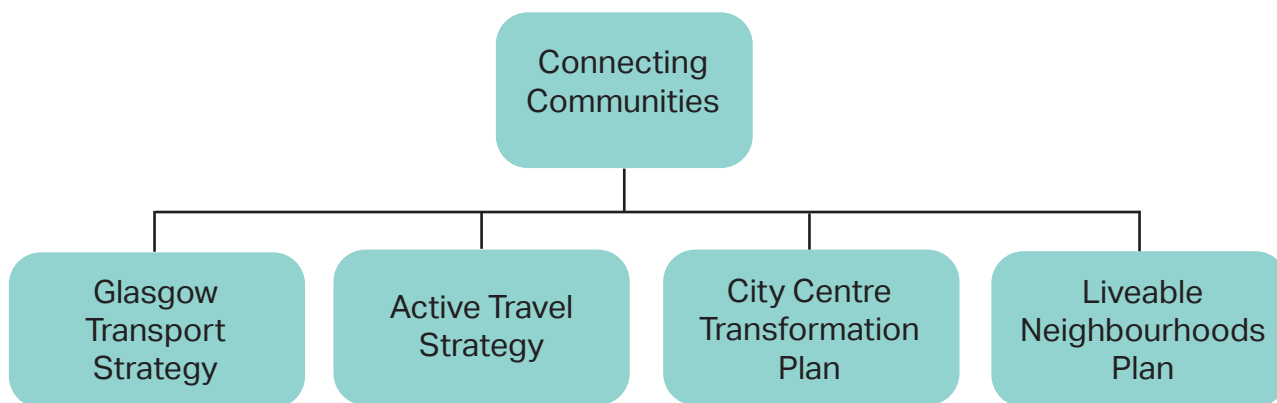




## A quick read version of the Public Conversation 2020 findings

Glasgow City Council is thinking about how people and goods move around the city daily, how to transform the city centre, and how to create liveable neighbourhoods. We are writing new transport-related plans on these issues and carried out engagement in September and October 2020 called Connecting Communities: A Public Conversation on Glasgow's Transport Future.



### The Public Conversation

We asked questions and prompted debate about:

- Problems our new transport plans need to tackle
- Proposed outcomes for the Glasgow Transport Strategy
- Initial policy focus statements
- Specific Issues, including Covid-19 impacts
- Solutions

### What did we do and who took part?

Due to Covid-19, most engagement was online and by phone, though there were different ways to take part.

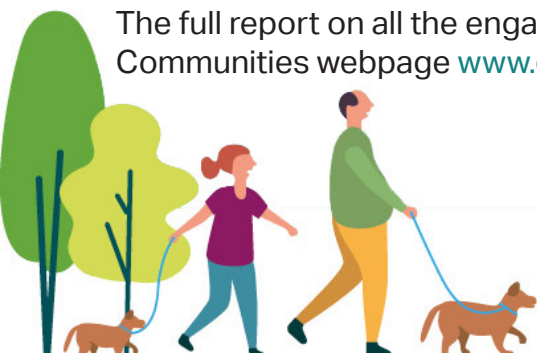
We made big efforts to reach as wide an audience of Glasgow's transport system as possible, supported by Sustrans and external consultants.

We used our Equality Impact Assessment screening process to identify people who are most impacted by transport, and then we developed an engagement approach which would have the best chances of hearing their voices.

Further details of who took part in the Public Conversation can be found in the appendices of the report, pages 49-99.

### Where can I find the full report?

The full report on all the engagement and what people said can be found at the Connecting Communities webpage [www.glasgow.gov.uk/connectingcommunities](http://www.glasgow.gov.uk/connectingcommunities)



What did we do	Who took part
Online methods including survey (with Freephone alternative), transport priorities simulator and Connecting Moments website	2,899 online survey responses (83% Glasgow residents)
Online discussions with community organisations and their members	23 online conversations with community organisations, some self-facilitated, some supported by SCDC, Sustrans or a Council Transport Strategy team officer
Online stakeholder workshops and one-to-ones with some stakeholders and groups	29 stakeholder organisations attending 2 online workshops
Online Community Council Development Session with a focus on transport	11 responses from community councils, with 7 attending on online workshop, 21 representatives at an online community council session
Written submissions	25 responses from businesses (plus attendance at a Glasgow Business Resilience Council online discussion) 38 written responses from stakeholder organisations

## What did we hear?

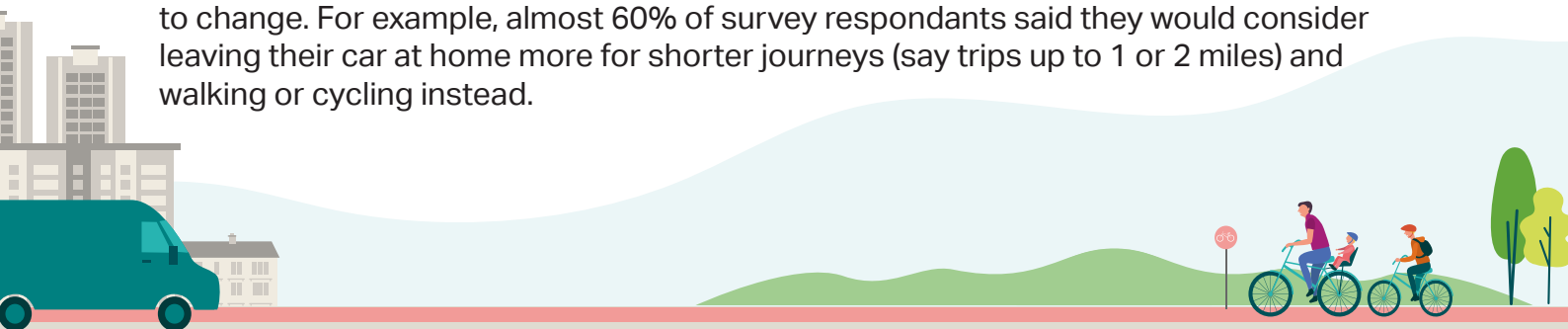
People generally agreed with the key problems the Council presented in the Public Conversation, and the top transport problems people themselves mentioned related to lack of safe places to cycle; quality, reliability and connectivity issues with public transport (particularly buses), high cost of public transport (particularly buses) and lack of integration in the public transport system including ticketing.

People generally agreed with the four draft outcomes presented for Glasgow's new transport strategies and plans, and some offered more specific objectives to include, which will be taken on board in the development of the Glasgow Transport Strategy.

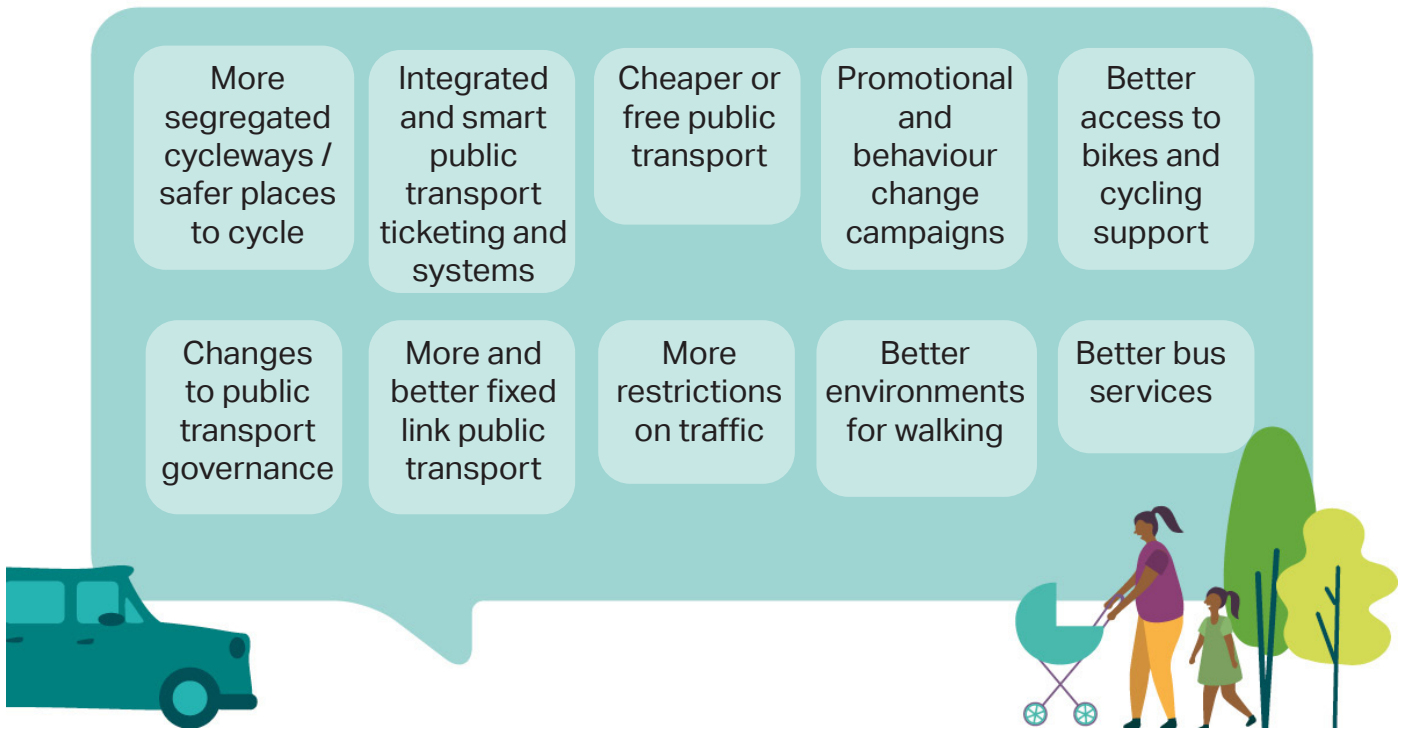
People supported the concepts of a new City Centre Transformation Plan and a new Liveable Neighbourhoods Plan. They also supported the reallocation of roadspace in Glasgow to more sustainable ways of travelling.

There was broad support for a set of draft policy focus statements, though further definition and development was requested on some.

Over 50% of survey respondents disagreed that the transport system in Glasgow was adequate for their needs. More positively, there is a substantial desire and openness to change. For example, almost 60% of survey respondents said they would consider leaving their car at home more for shorter journeys (say trips up to 1 or 2 miles) and walking or cycling instead.



Amongst the **top solutions** to tackling transport problems people would like to see were:



### What happens next?

Following the Public Conversation, the plans and strategies will be developed alongside each other. There will be opportunities to engage on these. You can keep up to date at [www.glasgow.gov.uk/connectingcommunities](http://www.glasgow.gov.uk/connectingcommunities). You can also email [ConnectingCommunities@glasgow.gov.uk](mailto:ConnectingCommunities@glasgow.gov.uk)

	Public Conversation	Developing our plans and strategies	Delivering the plans
	<ul style="list-style-type: none"> <li>Consulting with the public and stakeholders</li> </ul>	<ul style="list-style-type: none"> <li>Technical work to develop our strategies</li> <li>Further engagement on elements</li> </ul>	<ul style="list-style-type: none"> <li>The plans and strategies become city policy</li> <li>Start working to achieve the outcomes</li> </ul>
	Autumn 2020	Spring/Summer 2021	Winter 2021
Winter 2019/20	Winter 2020/21	Autumn 2021	2030
<b>Making a case for change</b> <ul style="list-style-type: none"> <li>Bringing together what people have already told us about transport</li> <li>Doing research, gathering evidence, running stakeholder workshops</li> </ul>	<b>Reporting on the Public Conversation</b> <ul style="list-style-type: none"> <li>Analysing inputs to the Public Conversation</li> <li>Sharing what we have heard</li> </ul>	<b>Draft strategies</b> <ul style="list-style-type: none"> <li>Asking for feedback on draft strategies and plan</li> </ul>	<b>Our transport future!</b>

