



1 April 2023 – 31 March 2026

Glasgow Communities Fund

Fund Overview



1 April 2023 – 31 March 2026

Glasgow Communities Fund

Fund Overview

Contents

SECTION 1 – GLASGOW COMMUNITIES FUND

1.1	Introduction	1
1.2	Challenges	1
1.3	The Fund	2
1.4	Aims of the Fund	2
1.5	Principles of the Fund	2
1.6	Outcomes of the Fund	2
1.7	Priorities of the Fund	3

SECTION 2 – APPLYING TO THE FUND

ELIGIBILITY

2.1	Who can and can't apply?	4
2.2	What can and can't be supported?	4

BUDGET

2.3	How much is available?	5
2.4	How much can we apply for?	5
2.5	How many years funding can we apply for?	5

APPLICATION

2.6	How do we apply?	6
2.7	What is in the application pack?	6
2.8	Before completing an application	6
2.9	How many applications can we submit?	6
2.10	When is the deadline for applications?	6

SECTION 3 – ASSESSMENT

3.1	How we assess your application and make funding decisions	7
3.2	When will funding decisions/recommendations be approved?	9
3.3	When will we hear if our application has been successful?	9
3.4	How will the grant be paid?	9
3.5	When will projects be expected to start?	9

SECTION 4 – ADDITIONAL INFORMATION

4.1	Data Protection and Freedom of Information	10
4.2	Equalities	10
4.3	Fair Work Principles	10

Section 1:

Glasgow Communities Fund

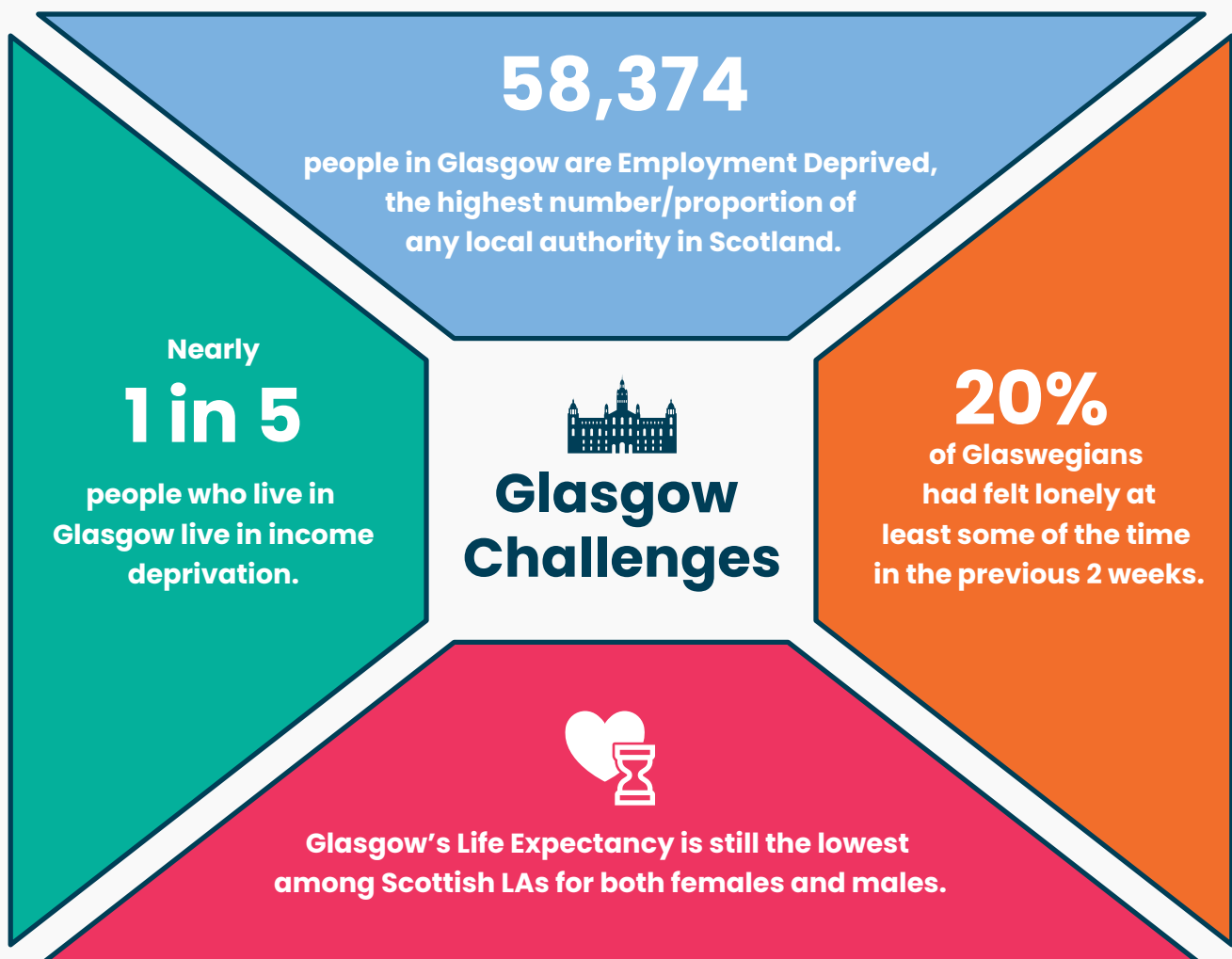
1.1 Introduction

Glasgow is Scotland's largest, most diverse city, with a vision to have a world class city with a thriving, inclusive economy where everyone can flourish and benefit from the city's success. In recent years, Glasgow has made progress towards achieving this vision. We have increased our business base, developed our economy to being one of the largest in the UK and improved our educational attainment through initiatives.

1.2 Challenges

Although outcomes are generally improving for residents, they are not improving fast enough for the poorest and most disadvantaged people in the city, nor for those with protected characteristics who face specific barriers and disadvantage.

Glasgow City Council is committed to responding to these challenges and tackling poverty and inequality and increasing economic growth throughout Glasgow. We want to make a difference to the lives of our residents and through the Glasgow Communities Fund we will support the residents of Glasgow to maximise their potential so that they are able to share in, and benefit from, the opportunities in the city.



1.3 The Fund

The Glasgow Communities Fund (referred to as the 'Fund') was introduced in October 2020, offering a 30-month programme of grant funding support to third sector organisations up to 31 March 2023. During the first Phase of the programme, the Fund has supported almost 300 organisations to deliver diverse programmes of activity at a city-wide and local level to the value of over £47m.

Phase 2 of the Fund will run from 1 April 2023 till 31 March 2026.

1.4 Aims of the Fund

Overall, the Fund aims to tackle poverty and inequality through:

- Building the skills, capacity and resilience of individuals and communities;
- Supporting activities and services that will enable and empower communities to become involved in the social, economic and cultural life of the city; and
- Removing or minimising disadvantages experienced by people due to their protected characteristics.

1.5 Principles of the Fund

In delivering these aims, the Fund is guided by the following principles:

- Communities are best placed to identify and deliver solutions that meet their needs; and
- Community led organisations are vital to creating, empowering and sustaining resilient communities.

These are further underpinned by a focus on: early intervention and prevention; innovation and initiatives that respond to emerging areas; improved outcomes and a recognition of full cost recovery.

Adopting a community-led approach to service development, planning and decision-making will enable the Fund to be flexible thus ensuring that it is responsive to existing and emerging issues.

1.6 Outcomes of the Fund

The Fund has the following overarching outcomes:

- People and communities have access to services, support and opportunities that improve their lives and well-being.
- People and communities are more self-reliant and are better able to identify ways to improve and take control of their lives and well-being.
- People are better able to gain the skills, capacity and confidence to play an active role in their communities.
- People and communities are better able to influence and participate in decision making and service development.
- People and communities are better able to identify and deliver solutions that meet their needs.
- People and communities are better able to participate in the social, economic and cultural life of Glasgow.

1.7 Priorities of the Fund

We recognise that poverty and inequality take many forms and that there are many ways to address them. In light of this, the Fund will be underpinned by two priority areas: Improving Communities and Resilient Communities.

We wish to support initiatives that contribute to one or more of the Fund's outcomes through these priority areas.

(i) Improving Communities

Through this priority we want to provide opportunities for communities and individuals to improve their lives by addressing the impact of barriers such as deprivation, disadvantage, exclusion, inequality and isolation.

We want to support services and activities that improve the health, well-being, social and/or economic position of communities and individuals enabling them to reach their full potential and play an active role in the city.

For example by:

- Promoting access to health related services and activities that enable people to make better choices in improving their health and well-being including mental health.
- Tackling health inequalities and social isolation or exclusion.
- Supporting those at risk of vulnerability through early intervention and prevention.
- Promoting equality of access to services and reducing barriers to engagement particularly for Protected Characteristic Groups that enables them to access opportunities to improve their health, well-being, social and economic position.
- Promoting access to support and advice that enables people to develop and improve their financial capability.
- Developing people's skills so that they are able to take advantage of opportunities and pathways to employment that improves their economic position.

(ii) Resilient Communities

Through this priority we want to provide opportunities for communities and individuals to actively participate within their local communities and empower them to identify and deliver solutions that meet their needs.

We want to support services and activities that strengthen resilience, encourages learning and skill development, increases aspirations and confidence of communities and individuals enabling them to reach their full potential and play an active role in the city.

For example by:

- Developing people's capacity, confidence, resilience and skills through learning empowering them to actively participate and contribute in their community.
- Supporting activities that address barriers to engagement that prevent people, particularly from Protected Characteristic Groups, from participating in their community.
- Enabling communities to have a greater say in the decision making process and service development to deliver solutions that meet their needs.
- Assisting local groups and organisations to develop responsive services that meet the needs of local communities.
- Promoting social inclusion and community cohesion through cultural and creative activities.

The services and activities supported through the Glasgow Communities Fund will be expected to assist in delivering Glasgow City Council and Glasgow Community Planning Partnership strategies (some of which are being developed) for tackling poverty and inequality.

These include:

- Glasgow Community Plan
- Glasgow Equality Outcomes
- Glasgow Community Learning and Development Strategy

Links to these documents will be available on the Council's Website along with the application form [here](#).

Section 2:

Applying to the Fund

ELIGIBILITY

Please note that if you fail to meet the eligibility criteria your application will not be considered.

2.1 Who can and can't apply?

This Fund is open to community and Third Sector organisations that deliver locally within Glasgow and engage local people in the design and development of services to meet their needs. These can be new or established services.

We will accept applications from the following types of organisation:

- Company Ltd By Guarantee
- Community Interest Company (CIC)
- Scottish Charitable Incorporated Organisation (SCIO)
- Constituted Charity/Voluntary Sector Organisations (including unincorporated)
- Housing Associations/Friendly, Mutual or Registered Societies
- Colleges

We will not accept applications from the following:

- Individuals or Sole Traders
- Organisations that generate profit for private distribution
- Statutory/Public Bodies such as Glasgow City Council and its Arm's Length External Organisations, Community Councils, NHS, Police Scotland etc

2.2 What can and can't be supported?

You can apply for some or all of your project costs including:

- Employee costs including staff salaries which may include annual inflationary increases and training costs
- Activity and programme costs
- Running costs including premises, utilities, equipment
- Event costs
- Professional fees including audit costs
- Full Cost Recovery

You cannot apply to the fund for the following:

- Capital costs
- Management fee
- Religious or political activities
- Costs already funded by someone else
- Costs incurred before the activity starts
- Alcohol or drugs
- Recoverable VAT
- Loans or interest
- Mortgages
- Activities out with Glasgow

Please note that this list is not exhaustive.

BUDGET

2.3 How much is available?

The total value of the Fund from 2023–2026 is over £55m. From this, over £6m of the Fund will be dedicated to support the delivery of the Council's Financial Inclusion Strategy in partnership with the Glasgow Advice and Information Network.

The available funds for application in each financial year is over £16m which will be allocated annually on a City-wide / Sector split based on the Scottish Index for Multiple Deprivation (SIMD) calculations, as set out in the table below –

Geographic Area	% Share	GCF Funding allocation (2023–2026)
City Wide	30.00	£14,797,072
North East Sector	25.93	£12,790,354
North West Sector	20.38	£10,053,757
South Sector	23.69	£11,682,390
GCF total (2023 – 2026)	100.00	£49,323,573

The information provided in your application form at section 29 will be used to help determine which geographical area/s your application may be funded from.

2.4 How much can we apply for?

You may apply for a minimum award of £20,000 and a maximum of £200,000 each year.

It is anticipated that demand for funding will be high and therefore you should only apply for what you need. **Please note if successful in your application you may not be offered the total amount applied for.**

2.5 How many years funding can we apply for?

You may apply for 1 year, 2 years or 3 years funding. Applicants should carefully consider how many years they require funding for.

APPLICATION

2.6 How do we apply?

To apply to the Glasgow Communities Fund, you need to read the application pack and associated guidance found on our website at the following link: www.glasgow.gov.uk/glasgowcommunitiesfund

2.7 What is in the application pack?

Included in the Application pack is:

- Microsoft Word version of the online Application Form (not for submission)
- Microsoft Excel Budget Template
- Step by Step guide to the application form
- An example of a completed Application Form
- An example of a completed Budget Template

In addition to the application guidance noted above, there is further support available including:

- Online Workshops to guide you through the application form
- Live FAQs on the website
- Support from Glasgow Council for Voluntary Services (GCVS) including training sessions
- Assistance from members of the grants team with application related enquires, including technical queries via cesgrants@glasgow.gov.uk.

Further details on how to access the support available, including the on-line workshops and support from GCVS can be found here. www.glasgow.gov.uk/glasgowcommunitiesfund

2.8 Before completing an application

The application form is in the format of a smart survey. Before completing the application we **STRONGLY** recommend that you read the 'Step by Step Guidance' available on the [website](#). We recommend that you have this document to hand while you complete the application form, it will help you complete each part of the application form and will hopefully answer any questions you might have.

You will also need to have the following documents to hand:

- A signed and dated copy of your Governing Document (e.g. Constitution, Mem & Arts)
- A copy of your most recent signed audited accounts or verified financial statement
- A copy of the Minute from your last Board/ Committee meeting
- A copy of your latest bank statement (this will not be returned to you)

Please note that a Microsoft Word version of the application form has been made available on the website and may be used to assist you to prepare for completing the online form. We will not accept an application in Word format, you must complete and submit the online application.

2.9 How many applications can we submit?

It is anticipated that the demand for funding will be high therefore you can only make one application per organisation.

2.10 When is the deadline for applications?

Applications and required documentation (see above 2.8) should be submitted using the online application form. Applications must be submitted no later than:

- **Monday 12 September 2022 at 12 midday**

Once you press submit, the screen will say 'Thank you for your submission'. You will then be sent a PDF copy of your application for your records within 5 working days.

Due to the number of applications we expect to receive, we will not be able to contact you about the content of your application. Your application will be assessed on the basis of the information submitted. Please make sure that any documents you upload with your form are the correct ones. If we find that you have attached an incorrect document, then we will endeavour to contact you.

Section 3:

Assessment

3.1 How we assess your application and make funding decisions

In Phase 2 of the Fund applications will be categorised and assessed on a themed basis against similar organisations. The themes are –

- Equalities
- Arts and Culture
- Supporting Communities

Once you submit your application, initial assessment and technical and eligibility checks will be carried out by the Grants Team. Applications will then be considered by ‘strategic lead’ officers from across the Council family and the Glasgow City Health and Social Care Partnership.

This input from ‘strategic leads’ will maximise the impact of the Fund by identifying any opportunities for joint funding, any duplication of funding and any over provision or gaps in provision.

Eligible applications will be scored and assessed using the criteria and scoring levels outlined below:

- **Organisation/Governance** – this includes an assessment of the governance to ensure the organisation can support delivery with a clear indication of the aims of the organisation.
- **Project Development** – this includes an assessment of identified gaps and evidence of need, involvement of communities in design and development and ongoing plans for involvement
- **Project Delivery** – this includes assessment of what will be delivered, including where, when and who will benefit, whether the plans are realistic and deliverable and evidence of partnership working
- **Project Outcomes and Impact** – this includes an assessment of the intended outcomes, how these will be measured and the difference the project will make

- **Organisation and Project Finance** – this includes an assessment of the budget and whether the project costs appear reasonable/realistic as well as the organisation’s financial stability.
- **Sustainability** – this includes assessment of plans for how the funded activity can be sustained in the longer term

Tables 1a and 1b below show the score key used by Assessing Officers for each assessment criteria and the score weighting given to each assessment criteria.

Table 1a: Score Key Assessment Tool

SCORE	SCORE KEY ASSESSMENT	INTERPRETATION
5	Excellent	Satisfies and demonstrates exceptional understanding of criteria required. Response identifies factors that will offer potential added value
4	Good	Satisfies the requirement with minor additional benefits
3	Acceptable	Satisfies the requirement with no reservations
2	Minor reservations	Satisfies the requirement with minor reservations and limited evidence to support the response
1	Serious reservations	Some attempt has been made to provide information but lacks detail
0	Unacceptable	Does not meet the requirement. Insufficient information provided

Table 1b: Assessment and Scoring Template Criterion

CRITERIA	WEIGHTING (%)
Organisation/Governance	7
Project Development	18
Project Delivery	28
Project Impact – Impact and Outcome of the Fund	34
Project Finance	10
Sustainability	3
TOTAL	100

A maximum score of 5 against all criteria would result in a weighted score of 100, whereas a score of 1 for all criteria would result in a weighted score of 20.

The information provided in your application and subsequent score will be used to make an initial recommendation.

Please note that a high score does not guarantee funding. Scores will be considered alongside strategic fit, local need and available funding.

Further information the assessment process will be made available to organisations later in 2022.

3.2 When will funding decisions/recommendations be approved?

It is anticipated that funding decisions will be made in December 2022. Applicants to the Fund and relevant stakeholders will be notified of the decision arrangements and dates later in 2022.

Funding recommendations are normally published on the Council's website one week prior to the decision meeting/s taking place. You will be notified when these will be available.

It should be noted that the information made public on the Council's website will contain information on applications received including name of organisation and project description as included in your application and the amount of funding requested.

It should be noted that final funding decisions will be made in accordance with the available budget.

Please note that all decisions made are final and there is no appeal process.

3.3 When will we hear if our application has been successful?

Following approval of applications, it is our intention to confirm awards and to outline the practical and administrative arrangements, including performance monitoring, by January 2023. Unsuccessful applicants will also be notified by January 2023.

We intend to provide feedback to unsuccessful applicants. Further information on this will be available in due course.

3.4 How will the grant be paid?

Information on the grant payment process and schedule will be made available as part of the award process in 2023.

3.5 When will projects be expected to start?

Successful projects will be expected to start from 1 April 2023 and no later than 1 October 2023.

Section 4:

Additional Information

4.1 Data Protection and Freedom of Information

Applicants to this Fund should note that Glasgow City Council, as a Scottish public authority, is subject to the provisions of the Freedom of Information (Scotland) Act 2002 and Data Protection Act 2018.

Therefore, please note that information provided will be held, published and disclosed in accordance with this legislation.

Further information is available on our [website](#) and on the Scottish Information Commissioners [website](#).

4.2 Equalities

The Equality Act 2010 protects people from discrimination in the workplace and in wider society. All organisations that submit an application to the Glasgow Communities Fund must satisfy themselves that they are compliant with the relevant equalities legislation.

Find out more about [who is protected](#) from discrimination, [the types of discrimination](#) under the law and [what action you can take](#).

4.3 Fair Work Principles

Glasgow City Council is committed to working with third sector partners on the delivery of high-quality public services that are supported and delivered by a well-managed, motivated and properly remunerated workforce with access to appropriate opportunities for training and development. As part of that commitment, the Council encourages all organisations funded from the Phase 2 of the Glasgow Communities Fund to commit to the criteria set out in [The Fair Work Framework](#). As a minimum, the Council asks that any staff posts funded from the Glasgow Communities Fund are paid the real Living Wage and that gender equal pay is in place.

The Council recognises that at the time of applying to Phase 2 of the Glasgow Communities Fund some organisations may pay their staff the legally required 'National Living Wage' and not the 'Real Living Wage' as set out in the Fair Work criteria. Where this is the case, **organisations will not be penalised or 'scored down' when applications to Phase 2 of the Glasgow Communities Fund are assessed.** For those organisations successful in applying to the Fund, the Council will seek to get an understanding of any barriers organisations face which prevent them from paying the Real Living Wage.

This information will be picked up and considered as part of the Performance Monitoring Framework. It is expected that organisations commit to the principles of Fair Work First and seek to work towards paying staff the Real Living Wage during the course of their funding in Phase 2.

The Council will be working with Third Sector partners through established channels to get an understanding of pay and fair work issues across the third sector in Glasgow. Further information on this will be made available in the coming months.

Further information on the Real Living Wage can be found [here](#).

Glasgow Communities Fund

Fund Overview:

1 April 2023 – 31 March 2026

Glasgow City Council

City Chambers, George Square
Glasgow, G2 1DU

 glasgow.gov.uk

 [@glasgowcc](https://twitter.com/glasgowcc)

 [@glasgowcc](https://www.instagram.com/glasgowcc)